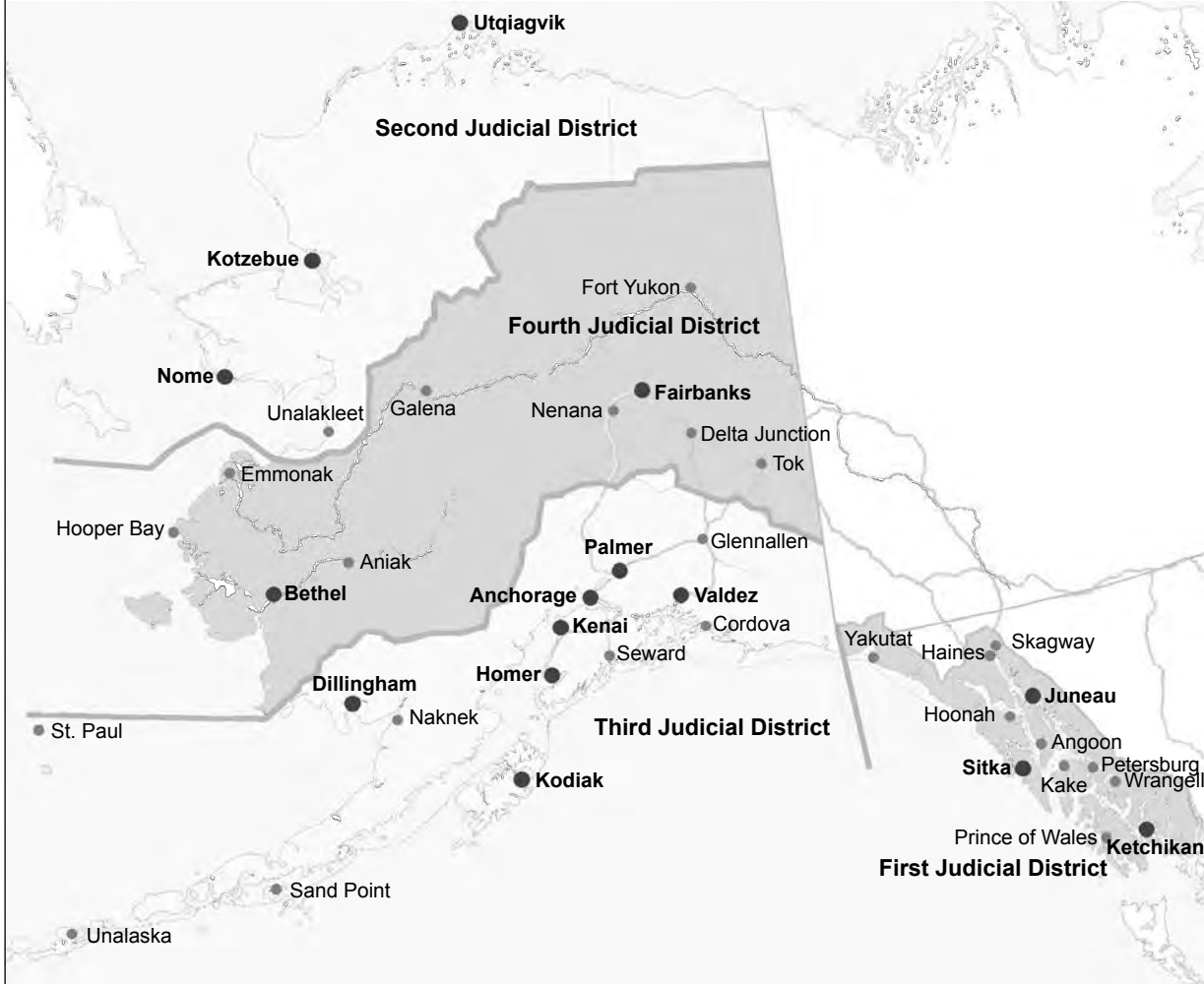


A black and white photograph of a misty forest. In the foreground, several evergreen trees of varying heights are scattered across a field. The middle ground is filled with a dense, low-lying forest of similar trees, partially obscured by a thick layer of mist or fog. In the background, a body of water is visible, with a few small islands or headlands rising from the surface. The overall atmosphere is serene and quiet.

*Alaska Court System
Statistical Report FY 2023*

July 1, 2022 – June 30, 2023

Alaska Court Locations, FY 2023



Alaska Court System Statistical Report FY 2023

July 1, 2022 – June 30, 2023



© Copyright 2024 by the Alaska Court System.

Layout and compositing by Melissa S. Green, Field of Words, Anchorage, AK.

A bookmarked PDF version of this statistical report is available on the Alaska Court System website at <http://www.courts.alaska.gov/admin/index.htm#annualrep>.



Starfish, Hooper Bay (Fourth Judicial District)

Contents

<i>Alaska Court Locations, FY 2023 (map)</i>	<i>inside front cover</i>
Budgetary Overview	1
Figure A. Alaska Court System Budget within State of Alaska FY23 Operating Budget.....	2
Figure B. Alaska Court System Budget in Total Justice-Related Operating Budget, FY23	3
Appellate Courts	5
Supreme Court Activity	7
Filings.....	7
Dispositions.....	7
Pending Caseload	7
Time Required for Disposition of Cases.....	7
Court of Appeals Activity	7
Filings.....	7
Dispositions.....	8
Pending Caseload	8
Time Required for Disposition of Cases.....	8
Note for Researchers	8
Alaska Supreme Court	9
Table 1.01. Alaska Supreme Court — Case Filings & Dispositions, FY 2019–2023.....	9
Table 1.02. Alaska Supreme Court — Motions and Petitions for Rehearing, FY 2019–2023	9
Table 1.03. Alaska Supreme Court — Caseload Summary, FY 2023	9
Table 1.04. Alaska Supreme Court — Dispositions by Manner of Disposition, FY 2023	10
Table 1.05. Alaska Supreme Court — Status of Cases Pending End of Year, FY 2023	10
Table 1.06. Alaska Supreme Court — Time to Disposition, FY 2023.....	11
Alaska Court of Appeals	13
Table 2.01. Alaska Court of Appeals — Case Filings & Dispositions, FY 2019–2023	13
Table 2.02. Alaska Court of Appeals — Motions and Petitions for Rehearing, FY 2019–2023.....	13
Table 2.03. Alaska Court of Appeals — Caseload Summary, FY 2023	13
Table 2.04. Alaska Court of Appeals — Dispositions by Manner of Disposition, FY 2023	14
Table 2.05. Alaska Court of Appeals — Status of Cases Pending End of Year, FY 2023.....	14
Table 2.06. Alaska Court of Appeals — Time to Disposition, FY 2023	15
Statewide Trial Courts	17
Trial Court Activity	19
Filings.....	19
Dispositions.....	19
Explanatory Notes.....	19
Felony Filings.....	19
Criminal Case Categorization	19
Reopened Cases	19
Civil Protective Order Cases	20
Note for Researchers	20

Statewide Trial Courts	21
Table 3.01. Total Statewide Trial Court Case Filings FY23	21
Table 3.02. Population Trends by Court Site FY23	22
Superior Court Activity	23
Table 4.01. Total Superior Court Case Filings FY21–FY23	25
Table 4.02. Total Superior Court Case Dispositions FY21–FY23	26
Figure 4.01. Superior Court Filing and Disposition Trends FY21–FY23	27
Table 4.03. Superior Court Clearance Rates FY21–FY23	28
Table 4.04. Superior Court Filings by Case Type FY23	29
Figure 4.02. Composition of Superior Court Filings FY23	30
Figure 4.03. Superior Court Filing Trends by Case Type FY21–FY23	31
Table 4.05. Superior Court Dispositions by Case Type FY23	32
Table 4.06. Felony Case Filings FY21–FY23	33
Table 4.07. Felony Filings by Case Type FY23	34
Table 4.08. Criminal Case Types FY23	35
Table 4.09. Felony Case Dispositions FY21–FY23	36
Table 4.10. Felony Case Dispositions by Manner of Disposition FY23	37
Table 4.11. Post-judgment Filings: Felony Petitions to Revoke Probation FY21–FY23	38
Table 4.12. Probate Case Filings FY21–FY23	39
Table 4.13. Probate Filings by Case Type FY23	40
Table 4.14. Probate Case Dispositions FY21–FY23	41
Table 4.15. Domestic Relations Case Filings FY21–FY23	42
Table 4.16. Domestic Relations Filings by Case Type FY23	43
Table 4.17. Domestic Relations Case Dispositions FY21–FY23	44
Table 4.18. Domestic Relations Case Dispositions by Manner of Disposition FY23	45
Table 4.19. Post-judgment Filings: Motions to Modify Custody, Support or Visitation FY21–FY23	46
Table 4.20. Superior Court General Civil Case Filings FY21–FY23	47
Table 4.21. Superior Court General Civil Filings by Case Type FY23	48
Table 4.22. Superior Court General Civil Case Types FY23	49
Table 4.23. Superior Court General Civil Case Dispositions FY21–FY23	50
Table 4.24. Superior Court General Civil Case Dispositions by Manner of Disposition FY23	51
Table 4.25. CINA Case Filings FY21–FY23	52
Table 4.26. Delinquency Case Filings FY21–FY23	53
Table 4.27. CINA and Delinquency Filings by Case Type FY23	54
District Court Activity	55
Table 5.01. Total District Court Case Filings FY21–FY23	57
Table 5.02. Total District Court Case Dispositions FY21–FY23	57
Figure 5.01. District Court Filing and Disposition Trends FY21–FY23	59
Table 5.03. District Court Clearance Rates FY21–FY23	60
Table 5.04. District Court Filings by Case Type FY23	61
Figure 5.02. Composition of District Court Case Filings FY23	62
Figure 5.03. District Court Filing Trends by Case Type FY21–FY23	63
Table 5.05. District Court Dispositions by Case Type FY23	64
Table 5.06. District Court Non-Minor Offense Case Filings FY21–FY23	65
Table 5.07. District Court Non-Minor Offense Case Dispositions FY21–FY23	66

Table 5.08. Misdemeanor Case Filings FY21–FY2367

Table 5.09. Misdemeanor Filings by Case Type FY2368

Table 5.10. Criminal Case Types FY2369

Table 5.11. Misdemeanor Case Dispositions FY21–FY2370

Table 5.12. Misdemeanor Case Dispositions by Manner of Disposition FY2371

Table 5.13. Felony Filings in District Court FY21–FY23.....72

Table 5.14. Post-judgment Filings: Misdemeanor Petitions to Revoke Probation FY21–FY2373

Table 5.15. Small Claims Case Filings FY21–FY2374

Table 5.16. Small Claims Case Dispositions FY21–FY2375

Table 5.17. Small Claims Case Dispositions by Manner of Disposition FY2376

Table 5.18. Civil Protective Order Case Filings FY21–FY23.....77

Table 5.19. Civil Protective Order Case Dispositions FY21–FY23.....78

Table 5.20. District Court General Civil Case Filings FY21–FY2379

Table 5.21. District Court General Civil Filings by Case Type FY2380

Table 5.22. District Court General Civil Case Dispositions FY21–FY2381

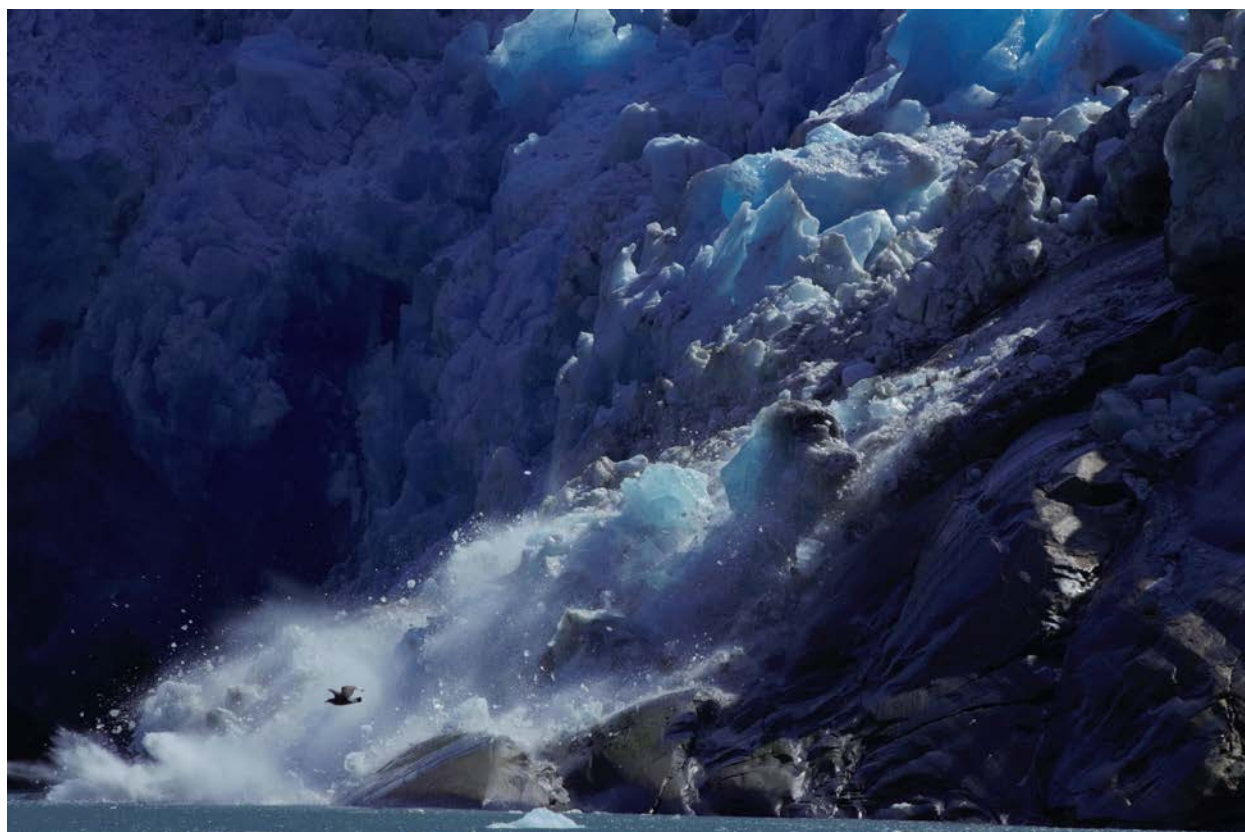
Table 5.23. District Court General Civil Case Dispositions by Manner of Disposition FY2382

Table 5.24. Minor Offense Case Dispositions FY21–FY23.....83

Table 5.25. Minor Offense Case Dispositions by Case Type FY2384

Table 5.26. Minor Offense Case Types FY2385

Photo Permissions.....inside back cover



Johns Hopkins Glacier, Glacier Bay National Park and Preserve (First Judicial District)



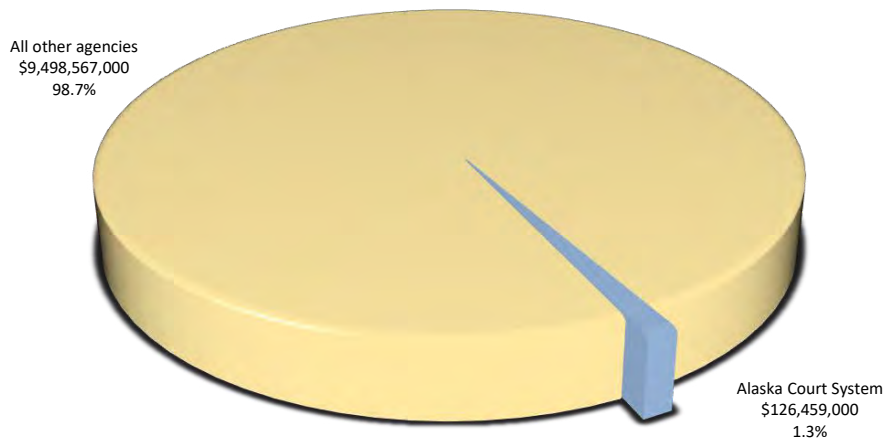
Caribou, Bering Land Bridge National Preserve (Second Judicial District)

Budgetary Overview



Pothole lakes, National Petroleum Reserve-Alaska, North Slope (Second Judicial District)

Figure A. Alaska Court System Budget within State of Alaska FY23 Operating Budget



FY23 State of Alaska Operating Budget by Agency

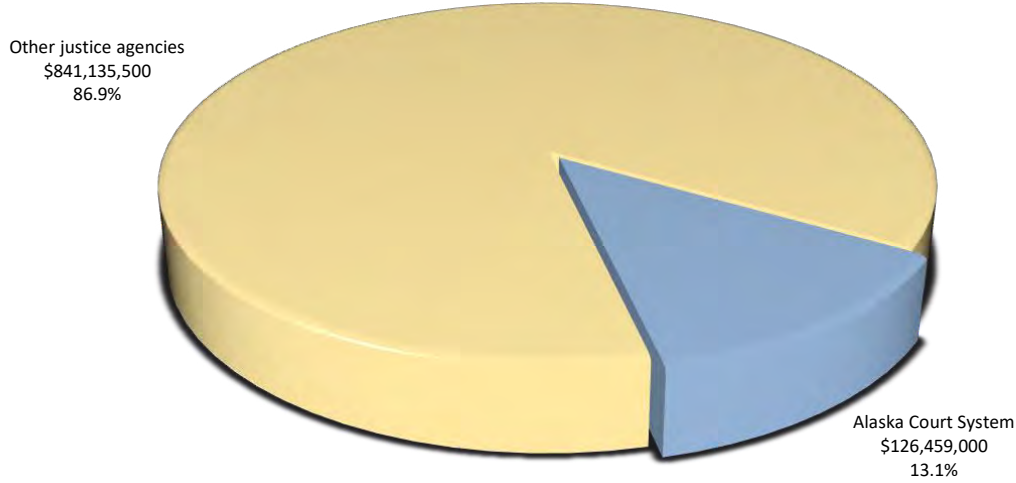
Agency	Amount	Percentage of budget
Alaska Court System*	\$126,459,000	1.3 %
Alaska Legislature	\$69,851,700	0.7
Department of Administration	\$305,096,900	3.2
Department of Commerce, Community and Economic Development	\$190,726,700	2.0
Department of Corrections	\$407,189,000	4.2
Department of Education and Early Development	\$1,677,177,500	17.4
Department of Environmental Conservation	\$101,998,000	1.1
Department of Family and Community Services	\$448,429,100	4.7
Department of Fish and Game	\$233,499,100	2.4
Department of Health	\$3,084,389,700	32.0
Department of Labor and Workforce Development	\$171,281,900	1.8
Department of Law	\$97,478,400	1.0
Department of Military and Veteran Affairs	\$59,425,600	0.6
Department of Natural Resources	\$191,547,300	2.0
Department of Public Safety	\$273,913,100	2.8
Department of Revenue	\$482,837,100	5.0
Department of Transportation and Public Facilities	\$740,216,800	7.7
Office of the Governor	\$36,290,300	0.4
University of Alaska	\$891,455,200	9.3
Executive Branch-wide appropriations	\$35,763,600	0.4
Total	\$9,625,026,000	100.0 %

Note: These budget charts reflect the enacted FY 2023 operating budgets for the given agencies. They do not include the additional amounts that each agency received when HB 226 lapsed into passage.

* Alaska Court System budget figure includes Alaska Judicial Council and Alaska Commission on Judicial Conduct.

Source of data: Alaska Legislative Finance Division: 2022 Legislature — Operating Budget: Agency Summary — Conf Comm Structure (21 Feb 2023)
<https://www.legfin.akleg.gov/BudgetReports/LY2022/Operating/Enacted/AgencySummary.pdf>

Figure B. Alaska Court System Budget in Total Justice-Related Operating Budget, FY23



FY23 Alaska Justice Agencies Operating Budgets

Agency	Amount	Percentage of budget
Alaska Court System*	\$126,459,000	13.1 %
Department of Corrections	\$407,189,000	42.1
Department of Law	\$97,478,400	10.1
Department of Public Safety	\$273,913,100	28.3
Public Defender Agency	\$32,584,500	3.4
Office of Public Advocacy	\$29,970,500	3.1
Total	\$967,594,500	100.0 %

Note: These budget charts reflect the enacted FY 2023 operating budgets for the given agencies. They do not include the additional amounts that each agency received when HB 226 lapsed into passage.

* Alaska Court System budget figure includes Alaska Judicial Council and Alaska Commission on Judicial Conduct.

Source of data: Alaska Legislative Finance Division: 2022 Legislature — Operating Budget: Agency Summary — Conf Comm Structure (21 Feb 2023)

<https://www.legfin.akleg.gov/BudgetReports/LY2022/Operating/Enacted/AgencySummary.pdf>

<https://www.legfin.akleg.gov/BudgetReports/LY2022/Operating/Enacted/DOA-AllocationSummary.pdf>



Fishing fleet, Petersburg (First Judicial District)



Smokehouse full of salmon strips, Fairbanks (Fourth Judicial District)



Steller sea lion, Saginaw Channel (First Judicial District)

Appellate Courts

Supreme Court Activity

Filings

During FY 2023, 304 cases were filed in the Supreme Court, a 10 percent decrease from the total filed in FY 2022. The number of civil appeals filed was down 12 percent from the previous year; petitions for hearing increased 3 percent; and petitions for review decreased by 9 percent. The category that includes bar matters, federal certification matters, and original applications decreased 46 percent from the previous year. For details about filings in various categories of cases from FY 2019 through FY 2023, see page 9.

Dispositions

The Supreme Court disposed of 321 cases in FY 2023, a 4 percent increase from FY 2022. The court issued 65 full opinions, 72 MO&Js, and two published orders. For details about dispositions by case type in FY 2023, see page 10. For comparisons of dispositions by case type from FY 2019 through FY 2023, see page 9.

Pending Caseload

On June 30, 2023, 289 cases were pending, a 0.3 percent increase from the end of FY 2022. Of these pending cases, 54 percent were at a stage prior to submission to the court (filing pending, awaiting settlement conference, awaiting record or transcripts, awaiting briefs, awaiting argument or conference, or awaiting response to a petition). Eight percent were stayed or were awaiting rehearing or record return prior to closing, and the remaining 38 percent were under advisement (submitted to the court but awaiting circulation of a draft opinion, publication of an opinion, or decision on a petition). For a comparison of cases pending at year's end according to case type from FY 2019 through FY 2023, see page 9. For the status of cases pending at the end of FY 2023 according to case type, see page 10.

Time Required for Disposition of Cases

In 50 percent of appeals decided by opinion or MO&J, the time from submission (usually the date of oral argument or conference on the briefs) to publication of a decision was 7.3 months or less. For petitions, bar matters, and original applications, 50 percent were completed (from opening to closing) in 2.5 months or less. Additional information about time to disposition can be found at page 11.

Court of Appeals Activity

Filings

During FY 2023, 197 cases were filed in the Court of Appeals, a 25 percent increase from the total filed in FY 2022. Merit appeal filings increased by 59 percent from the previous year, while sentence appeal filings increased 33 percent. Petition for review and petition for hearing filings decreased by 35 percent, and original application and bail appeal filings decreased by 22 percent from FY 2022. For a comparison of filings in various case categories from FY 2019 through FY 2023, see page 13.

Dispositions

The Court of Appeals disposed of 222 cases in FY 2023. This was a 15 percent decrease from FY 2022. The court issued 26 full opinions and 102 memorandum opinions and summary dispositions. For details about the types and caseload composition of dispositions in FY 2023, see page 13. For comparisons of dispositions by case type from FY 2019 through FY 2023, see page 13.

Pending Caseload

On June 30, 2023, 376 cases were pending before the Court of Appeals. Of these cases, 66 percent were at a stage prior to submission to the court (filing pending, awaiting record, awaiting briefing, awaiting oral argument, or awaiting response to a petition). Five percent were awaiting rehearing or record return prior to closing; 2 percent were stayed or remanded; and the remaining 27 percent were under advisement (submitted to the court but awaiting circulation of a draft opinion, publication of an opinion, or a decision on a petition). For a comparison of cases pending at year's end according to case type from FY 2019 through FY 2023, see page 13. For the status of cases pending at the end of FY 2023 according to case type, see page 14.

Time Required for Disposition of Cases

In 50 percent of appeals decided by opinion or MO&J, the time from submission (usually the date of oral argument or conference on the briefs) to publication of a decision was 3.9 months or less. Fifty percent of petitions and original applications were completed (from opening to closing) in 1.6 months or less. Additional information about time to disposition can be found at page 15.

Note for Researchers

Readers and researchers should be aware that occasional changes in the manner in which cases are reported or recorded by the Alaska Court System may account for some changes over time in case filing totals for specific courts or jurisdictions. While the court system attempts to make the data tables in the annual report as consistent as possible from year to year, care is necessary, especially when discerning trends or making comparisons between time periods.

Alaska Supreme Court

**Table 1.01. Alaska Supreme Court — Case Filings & Dispositions,
FY 2019–2023**

	FY19	FY20	FY21	FY22	FY23
Filings					
Civil appeals	166	197	171	192	169
Petitions for hearing	114	70	61	78	80
Petitions for review	54	27	58	53	48
Bar/original applications	19	14	11	13	7
Total	353	308	301	336	304
Dispositions					
Civil appeals	238	188	186	169	177
Petitions for hearing	109	88	67	66	79
Petitions for review	62	24	50	57	59
Bar/original applications	22	18	11	18	6
Total	431	318	314	310	321
Published					
Full opinions	126	83	77	66	65
Memorandum opinions	45	48	60	70	72
Published orders	3	5	3	2	2
Total	174	136	140	138	139
Pending end-of-year					
Civil appeals	231	241	227	245	241
Petitions for hearing	36	23	14	25	32
Petitions for review	11	15	24	17	13
Bar/original applications	9	6	7	1	3
Total	287	285	272	288	289

**Table 1.02. Alaska Supreme Court — Motions and Petitions for Rehearing,
FY 2019–2023**

	FY19	FY20	FY21	FY22	FY23
Filings					
Petitions for rehearing	34	27	30	24	22
Full court motions	68	58	62	48	49
Individual justice motions	930	880	799	886	835
Routine (clerk) motions	473	490	503	468	608
Total	1,505	1,455	1,394	1,426	1,514
Dispositions					
Petitions for rehearing	34	27	29	23	18
Full court motions	74	59	65	50	44
Individual justice motions	884	928	804	890	825
Routine (clerk) motions	466	487	509	458	618
Total	1,458	1,501	1,407	1,421	1,505
Pending end-of-year					
Petitions for rehearing	2	2	1	2	6
Full court motions	4	3	2	1	5
Individual justice motions	82	43	29	19	30
Routine (clerk) motions	21	13	9	18	10
Total	109	61	41	40	51

Table 1.03. Alaska Supreme Court — Caseload Summary, FY 2023

	Civil appeals	Petitions for hearing	Petitions for review	Bar/original applications	Total
Pending beginning of year	245	25	17	1	288
Filings	169	80	48	7	304
Dispositions	177	79	59	6	321
Pending end of year	241	32	13	3	289

Table 1.04. Alaska Supreme Court — Dispositions by Manner of Disposition, FY 2023

	Civil appeals	Petitions for hearing	Petitions for review	Bar/ original application/ federal certified questions	Total all cases
Dispositions by published opinions					
Affirmed	28	0	1	0	29
Reversed or vacated	20	1	5	0	26
Affirmed in part/reversed in part	8	0	0	0	8
Other (dismissed, etc.)	2	0	1	1	4
Total	58	1	7	1	67
Summary dispositions on merits (memorandum opinions & summary orders)					
Affirmed	48	0	0	0	48
Reversed or vacated	17	0	0	0	17
Affirmed in part/Reversed in part	2	0	0	0	2
Other (dismissed, etc.)	5	0	0	0	5
Total	72	0	0	0	72
Petitions/applications granted		0	5	7	12
Total dispositions on merits	130	1	7	1	139
Petition denials/orders not on merits	16	65	42	2	125
Dismissals					
Stipulated to or by Appellant	23	8	6	3	40
On Motion of Appellee	3	0	0	0	3
<i>Sua Sponte</i> *	5	5	4	0	14
Total dispositions not on merits	47	78	52	5	181
Total dispositions	177	79	59	6	321

* *Sua Sponte* means orders issued by the court without motion by a party.

Table 1.05. Alaska Supreme Court — Status of Cases Pending End of Year, FY 2023

	Civil appeals	Petitions for hearing	Petitions for review	Bar/ original application/ federal certified questions	Total all cases
Filing pending	1	0	0	1	2
Awaiting settlement conference	0	0	0	0	0
Awaiting records/transcript	47	0	3	1	51
Awaiting briefs	47	0	1	1	49
Awaiting argument/conference	41	2	0	0	43
Awaiting draft opinion	63	2	0	0	65
Draft opinion circulating	20	1	0	0	21
Awaiting petition response	0	11	1	0	12
Awaiting petition decision	0	16	8	0	24
Awaiting rehearing/record return	10	0	0	0	10
Stayed or remanded	12	0	0	0	12
Total	241	32	13	3	289

Table 1.06. Alaska Supreme Court — Time to Disposition, FY 2023

Appeals decided by opinion or memorandum opinion & judgment (MO&J)*				Petitions, bar matters, original applications***			
	Percentile	Days	Months		Percentile	Days	Months
Pre-submission to Court				File open — file closed			
Notice of appeal to record certification	50%	32	1.1		50%	74	2.5
	75%	38	1.3		75%	105	3.5
	90%	48	1.6		90%	136	4.5
Record certification to last brief	50%	183	6.1	*** This includes all petitions, bar matters, and original applications closed during the FY, whether by regular order or dismissal, except those that were granted and thereafter went through the full briefing process, ending in an opinion.			
	75%	251	8.4				
	90%	320	10.7				
Last brief to submission**	50%	83	2.8				
	75%	119	4.0				
	90%	229	7.6				
Subtotal: Number of days/month before submission to the court	50%	320	10.7				
	75%	421	14.0				
	90%	609	20.3				
Submission to publication							
Submission to circulation of draft opinion or recommendation	50%	127	4.2				
	75%	170	5.7				
	90%	187	6.2				
Circulation of draft opinion or recommendation to publication	50%	72	2.4				
	75%	98	3.3				
	90%	165	5.5				
Subtotal: Number of days/months from submission to publication	50%	218	7.3				
	75%	268	8.9				
	90%	312	10.4				
Post-publication motions							
Publication to closing	50%	15	0.5				
	75%	21	0.7				
	90%	28	0.9				
Total time from open to close							
	50%	561	18.7				
	75%	711	23.7				
	90%	980	32.7				

* This includes appeals closed during the FY that resulted in a published opinion or memorandum opinion & judgment; appeals that ended by dismissal or other closure are not included.

** "Submission" is usually the date of oral argument or conference on the case, but can be later in circumstances such as reassignment to a different chambers, or reconference by the court.

Alaska Court of Appeals

Table 2.01. Alaska Court of Appeals — Case Filings & Dispositions, FY 2019–2023

	FY19	FY20	FY21	FY22	FY23
Filings					
Merit appeals	182	177	109	88	140
Sentence appeals	23	15	12	15	20
Petitions	36	25	35	46	30
Original applications/bail appeals	15	11	12	9	7
Total	256	228	168	158	197
Dispositions					
Merit appeals	256	236	189	190	163
Sentence appeals	39	28	27	18	10
Petitions	38	25	26	43	41
Original applications/bail appeals	11	13	11	11	8
Total	344	302	253	262	222
Published					
Full opinions	42	19	37	22	26
Memorandum opinions*	208	165	139	139	102
Published orders	0	2	0	0	0
Total	250	186	176	161	128
Pending end-of-year					
Merit appeals	572	513	441	340	323
Sentence appeals	56	43	26	26	38
Petitions	7	12	20	23	13
Original applications/bail appeals	2	4	4	3	2
Total	637	572	491	392	376

*This number includes summary dispositions, which the court started issuing in March 2019.

Table 2.02. Alaska Court of Appeals — Motions and Petitions for Rehearing, FY 2019–2023

	FY19	FY20	FY21	FY22	FY23
Filings					
Petitions for rehearing	9	7	16	28	16
Full court motions	121	149	160	173	99
Individual judge motions	490	497	447	37	52
Routine (clerk) motions	867	664	640	386	780
Total	1,487	1,317	1,263	624	947
Dispositions					
Petitions for rehearing	9	11	14	25	18
Full court motions	124	144	162	175	103
Individual judge motions	493	515	484	36	55
Routine (clerk) motions	869	695	651	991	789
Total	1,495	1,365	1,311	1,227	965
Pending end-of-year					
Petitions for rehearing	3	0	1	3	2
Full court motions	6	11	9	9	7
Individual judge motions	31	45	18	3	4
Routine (clerk) motions	43	26	14	14	23
Total	83	82	42	29	36

Table 2.03. Alaska Court of Appeals — Caseload Summary, FY 2023

	Merit appeals	Sentence appeals	Petitions	Bail appeals/ original applications	Total
Pending beginning of year	340	26	23	3	392
Filings	140	20	30	7	197
Dispositions	163	10	41	8	222
Pending end of year	323	38	13	2	376

Table 2.04. Alaska Court of Appeals — Dispositions by Manner of Disposition, FY 2023

	Merit appeals	Sentence appeals	Petitions	Bail appeals/ original applications	Total
Dispositions by published opinions					
Affirmed	7	0	3	0	10
Reversed or vacated	8	0	2	0	10
Affirmed in part/reversed in part	3	0	0	0	3
Other (dismissed, etc.)	1	0	1	1	3
Total	19	0	6	1	26
Summary dispositions on merits (memorandum opinions, summary dispositions, and final unpublished orders on the merits)					
Affirmed	78	3	0	0	81
Reversed or vacated	12	0	0	0	12
Affirmed in part/Reversed in part	5	0	0	0	5
Other (dismissed, etc.)	3	1	0	0	4
Total	98	4	0	0	102
Petitions/applications granted			6	0	6
Total dispositions on merits	117	4	6	1	128
Petition denials/orders not on merits	1	2	23	1	27
Dismissals					
Stipulated to or by appellant	27	4	4	3	38
On motion of appellee	0	0	0	0	0
<i>Sua Sponte</i> *	18	0	8	3	29
Total dispositions not on merits	46	6	35	7	94
Total dispositions	163	10	41	8	222

* *Sua Sponte* means orders issued by the court without motion by a party.

Table 2.05. Alaska Court of Appeals — Status of Cases Pending End of Year, FY 2023

	Merit appeals	Sentence appeals	Petitions	Bail appeals/ original applications	Total
Filing pending	1	0	1	0	2
Awaiting records/transcript	84	10	0	0	94
Briefing stage	105	17	0	0	122
Awaiting argument/conference	27	1	2	0	30
Awaiting draft opinion	24	4	2	2	32
Draft opinion circulating	59	6	5	0	70
Awaiting petition response	0	0	1	0	1
Awaiting petition decision	0	0	0	0	0
Awaiting rehearing/record return	16	0	1	0	17
Stayed or remanded	7	0	1	0	8
Total	323	38	13	2	376

Table 2.06. Alaska Court of Appeals — Time to Disposition, FY 2023

Appeals decided by opinion or memorandum opinion & judgment (MO&J)*				Petitions and original applications***			
	Percentile	Days	Months		Percentile	Days	Months
Pre-submission to Court				File open — file closed			
Notice of appeal to record certification	50%	39	1.3		50%	48	1.6
	75%	43	1.4		75%	90	3.0
	90%	76	2.5		90%	174	5.8
Record certification to last brief	50%	714	23.8	*** This includes all petitions and original applications closed during the FY, whether by regular order or dismissal, except those that were granted and thereafter went through the full briefing process, ending in an opinion.			
	75%	797	26.6				
	90%	906	30.2				
Last brief to submission**	50%	106	3.5				
	75%	244	8.1				
	90%	584	19.5				
Subtotal: Number of days/month before submission to the court	50%	920	30.7				
	75%	1,165	38.8				
	90%	1,429	47.6				
Submission to publication							
Submission to circulation of draft opinion or recommendation	50%	54	1.8				
	75%	184	6.1				
	90%	284	9.5				
Circulation of draft opinion or recommendation to publication	50%	30	1.0				
	75%	60	2.0				
	90%	134	4.5				
Subtotal: Number of days/months from submission to publication	50%	118	3.9				
	75%	239	8.0				
	90%	459	15.3				
Post-publication motions							
Publication to closing	50%	35	1.2				
	75%	41	1.4				
	90%	73	2.4				
Total time from open to close							
	50%	1,118	37.3				
	75%	1,458	48.6				
	90%	1,805	60.2				

* This includes appeals closed during the FY that resulted in a published opinion or memorandum opinion & judgment; appeals that ended by dismissal or other closure are not included.

** "Submission" is usually the date of oral argument or conference on the case, but can be later in circumstances such as reassignment to a different chambers, or reconference by the court.



Delta Wild and Scenic River Watershed (Fourth Judicial District)

*Statewide
Trial Courts*



Mother and baby humpback whales, North Pass (First Judicial District)



Siberian phlox, Utukok River (Second Judicial District)

Statewide Trial Courts

Trial Court Activity

Filings

During FY23, 91,953 cases were filed in the trial courts, a decrease of 13.8 percent from 106,690 filings in FY22.

The FY23 Superior Court filings were 21,365, a decrease of 3.8 percent from 22,215 filings in FY22. CINA filings decreased by 14.9 percent; felony filings decreased by 3.7 percent; delinquency filings decreased by 3.0 percent; probate decreased by 2.3 percent; domestic relations filings decreased by 2.2 percent; and general civil filings decreased by 0.5 percent.

The FY23 District Court filings were 70,588, a decrease of 16.4 percent from 84,475 filings in FY22. Minor offense filings decreased 25.9 percent; small claims filings decreased 16.4 percent; misdemeanor filings decreased 4.1 percent; and general civil filings decreased 1.0 percent. Civil protective order filings increased 5.9 percent.

Dispositions

The trial courts disposed of 93,369 cases in FY23, a decrease of 10.8 percent from the 104,701 dispositions reported in FY22. To avoid a backlog of cases awaiting disposition, courts aspire to have a clearance rate of 100 percent or higher, meaning that they have cleared (i.e., disposed of) at least as many cases as were filed during the period. The clearance rate for trial court cases was 101.5 percent in FY23.

Explanatory Notes

Felony Filings

Most felony cases are initiated in District Court and then transferred to Superior Court after indictment by a grand jury or the filing of an information. Since most of the activity in a felony case typically occurs in the Superior Court, felony cases are reported as Superior Court filings regardless of whether they were initiated in District Court or in the Superior Court. A table showing the number of felony cases initiated in the District Court is provided for informational purposes (Table 5.13, page 72). To avoid double counting, these filings are not included in the District Court filing totals, but should be considered when evaluating the **workload** of a District Court.

Criminal Case Categorization

Criminal cases are categorized based on the most serious charge at filing. For example, if a defendant is charged with a felony and two misdemeanors, the case is counted as a felony. If the felony charge is subsequently reduced to a misdemeanor, the case type does not change; the case is still categorized as a felony for reporting purposes.

Reopened Cases

The criminal filing statistics in this report include only new case filings and do not include petitions to revoke probation or other proceedings that cause the court to reopen a criminal case. Likewise, the

domestic relations filing statistics include only new case filings and do not include post-judgment motions to modify custody, support or visitation. Because this post-judgment activity significantly impacts the trial court workload, tables showing this activity are provided for informational purposes. The number of petitions to revoke probation in felony and misdemeanor cases can be found in Tables 4.11 and 5.14 (pages 38 and 73). The number of filings of motions to modify custody, support, or visitation can be found in Table 4.19 (page 46).

Civil Protective Order Cases

The civil protective order case group includes petitions for domestic violence, stalking, and sexual assault protective orders. These cases may be filed in either District or Superior Court, but District Courts handle the vast majority. Because readers and researchers often want to know the total number of civil protective order cases that were filed, domestic violence, stalking, and sexual assault protective order cases filed in the Superior Court are counted with the District Court cases.

Note for Researchers

Readers and researchers should be aware that occasional changes in the manner in which cases are reported or recorded by the Alaska Court System may account for some changes over time in case filing totals for specific courts or jurisdictions. While the court system attempts to make the data tables in the annual report as consistent as possible from year to year, care is necessary, especially when discerning trends or making comparisons between time periods.

Statewide Trial Courts

**Table 3.01. Total Statewide Trial Court Case Filings
FY 23**

Court	Superior Court		District Court				Total	
	Filings	% of Superior Court total	Non-minor offense filings	Minor offense filings	Total filings	% of District Court total	Filings	% of statewide total
Anchorage	9,741	45.6%	14,692	15,178	29,870	42.3%	39,611	43.1%
Angoon	2	0.0%	8	1	9	0.0%	11	0.0%
Aniak	66	0.3%	74	16	90	0.1%	156	0.2%
Bethel	798	3.7%	917	84	1,001	1.4%	1,799	2.0%
Cordova	49	0.2%	63	62	125	0.2%	174	0.2%
Delta Junction	32	0.1%	94	435	529	0.8%	561	0.6%
Dillingham	203	1.0%	317	104	421	0.6%	624	0.7%
Emmonak	76	0.4%	82	3	85	0.1%	161	0.2%
Fairbanks	2,383	11.2%	3,740	4,918	8,658	12.3%	11,041	12.0%
Fort Yukon	9	0.0%	39	9	48	0.1%	57	0.1%
Galena	17	0.1%	46	1	47	0.1%	64	0.1%
Glennallen	71	0.3%	99	313	412	0.6%	483	0.5%
Haines	12	0.1%	67	76	143	0.2%	155	0.2%
Homer	314	1.5%	659	1,290	1,949	2.8%	2,263	2.5%
Hoonah	5	0.0%	31	19	50	0.1%	55	0.1%
Hooper Bay	72	0.3%	86	0	86	0.1%	158	0.2%
Juneau	824	3.9%	1,755	1,536	3,291	4.7%	4,115	4.5%
Kenai	1,168	5.5%	1,718	2,729	4,447	6.3%	5,615	6.1%
Ketchikan	435	2.0%	1,154	354	1,508	2.1%	1,943	2.1%
Kodiak	290	1.4%	441	605	1,046	1.5%	1,336	1.5%
Kotzebue	320	1.5%	405	46	451	0.6%	771	0.8%
Naknek	46	0.2%	140	99	239	0.3%	285	0.3%
Nenana	40	0.2%	85	1,541	1,626	2.3%	1,666	1.8%
Nome	346	1.6%	635	172	807	1.1%	1,153	1.3%
Palmer	2,884	13.5%	4,247	4,192	8,439	12.0%	11,323	12.3%
Petersburg	53	0.3%	68	109	177	0.3%	230	0.2%
Prince of Wales	105	0.5%	332	367	699	1.0%	804	0.9%
Sand Point	12	0.1%	24	8	32	0.0%	44	0.0%
Seward	162	0.8%	296	1,509	1,805	2.6%	1,967	2.1%
Sitka	179	0.8%	291	309	600	0.9%	779	0.8%
Skagway	3	0.0%	21	13	34	0.1%	37	0.0%
St. Mary's ¹	61	0.3%	69	4	73	0.1%	134	0.1%
St. Paul	6	0.0%	9	1	10	0.0%	16	0.0%
Tok	43	0.2%	114	258	372	0.5%	415	0.4%
Unalakleet	89	0.4%	131	33	164	0.2%	253	0.3%
Unalaska	32	0.1%	70	167	237	0.3%	269	0.3%
Utqiagvik	302	1.4%	427	171	598	0.8%	900	1.0%
Valdez	68	0.3%	127	102	229	0.3%	297	0.3%
Wrangell	41	0.2%	87	71	158	0.2%	199	0.2%
Yakutat	6	0.0%	17	6	23	0.0%	29	0.0%
Total	21,365	100.0%	33,677	36,911	70,588	100.0%	91,953	100.0%
1st District	1,665	7.8%	3,831	2,861	6,692	9.5%	8,357	9.1%
2nd District	1,057	5.0%	1,598	422	2,020	2.8%	3,077	3.4%
3rd District	15,046	70.4%	22,902	26,359	49,261	69.8%	64,307	69.9%
4th District	3,597	16.8%	5,346	7,269	12,615	17.9%	16,212	17.6%

1. St. Mary's court closed in 2016. Records for filings from the venue are still maintained separately.

**Table 3.02. Population Trends by Court Site
FY 23**

Court	Population served by court site*			Change 2010-2022		Change 2020-2022		% of statewide total
	2010	2020	2022	Number	Percent	Number	Percent	
Anchorage	292,256	291,695	290,244	-2,012	-0.7%	-1,451	-0.5%	39.4%
Angoon	459	357	340	-119	-25.9%	-17	-4.8%	0.0%
Aniak	1,948	2,410	2,259	311	16.0%	-151	-6.3%	0.3%
Bethel	15,605	17,288	16,900	1,295	8.3%	-388	-2.2%	2.3%
Chevak ¹	1,421	Served by Hooper Bay			N/S	N/S	N/S	N/S
Cordova	2,239	2,609	2,566	327	14.6%	-43	-1.6%	0.3%
Delta Junction	5,017	4,833	4,999	-18	-0.4%	166	3.4%	0.7%
Dillingham	4,847	4,857	4,673	-174	-3.6%	-184	-3.8%	0.6%
Emmonak	2,203	2,453	2,403	200	9.1%	-50	-2.0%	0.3%
Fairbanks	97,781	95,812	96,900	-881	-0.9%	1,088	1.1%	13.2%
Fort Yukon	1,165	960	991	-174	-14.9%	31	3.2%	0.1%
Galena	1,461	1,410	1,333	-128	-8.8%	-77	-5.5%	0.2%
Glennallen	3,037	2,617	2,619	-418	-13.8%	2	0.1%	0.4%
Haines	2,591	2,127	2,638	47	1.8%	511	24.0%	0.4%
Homer	13,899	15,214	15,713	1,814	13.1%	499	3.3%	2.1%
Hoonah ²	914	1,839	1,825	911	99.7%	-14	-0.8%	0.2%
Hooper Bay	1,112	3,047	2,938	1,826	164.2%	-109	-3.6%	0.4%
Juneau	31,860	32,255	32,202	342	1.1%	-53	-0.2%	4.4%
Kake ¹	557	Served by Petersburg			N/S	N/S	N/S	N/S
Kenai	35,902	37,697	38,684	2,782	7.7%	987	2.6%	5.3%
Ketchikan	14,969	15,450	15,252	283	1.9%	-198	-1.3%	2.1%
Kodiak	13,592	13,101	12,832	-760	-5.6%	-269	-2.1%	1.7%
Kotzebue	8,197	8,123	7,649	-548	-6.7%	-474	-5.8%	1.0%
McGrath ¹	505	Served by Aniak			N/S	N/S	N/S	N/S
Naknek	2,628	2,320	2,207	-421	-16.0%	-113	-4.9%	0.3%
Nenana	3,297	3,403	3,366	69	2.1%	-37	-1.1%	0.5%
Nome	7,264	7,667	7,362	98	1.3%	-305	-4.0%	1.0%
Palmer	88,995	107,081	111,752	22,757	25.6%	4,671	4.4%	15.2%
Petersburg ²	3,266	3,989	3,930	664	20.3%	-59	-1.5%	0.5%
Prince of Wales ³	4,008	3,582	3,600	-408	-10.2%	18	0.5%	0.5%
Sand Point	2,114	1,831	2,101	-13	-0.6%	270	14.7%	0.3%
Seward	5,465	5,771	5,498	33	0.6%	-273	-4.7%	0.7%
Sitka	9,041	8,658	8,528	-513	-5.7%	-130	-1.5%	1.2%
Skagway	968	1,240	1,146	178	18.4%	-94	-7.6%	0.2%
St. Mary's ⁴	2,723	2,868	2,817	94	3.5%	-51	-1.8%	0.4%
St. Paul	581	480	440	-141	-24.3%	-40	-8.3%	0.1%
Tanana ¹	246	Served by Nenana			N/S	N/S	N/S	N/S
Tok	2,012	1,975	2,047	35	1.7%	72	3.6%	0.3%
Unalakleet	2,228	2,379	2,320	92	4.1%	-59	-2.5%	0.3%
Unalaska	6,007	6,341	6,147	140	2.3%	-194	-3.1%	0.8%
Utqiagvik⁵	8,756	10,701	10,443	1,687	19.3%	-258	-2.4%	1.4%
Valdez	4,064	4,162	4,135	71	1.7%	-27	-0.6%	0.6%
Wrangell	2,369	2,127	2,084	-285	-12.0%	-43	-2.0%	0.3%
Yakutat	662	662	673	11	1.7%	11	1.7%	0.1%
Total	710,231	733,391	736,556	26,325	3.7%	3,165	0.4%	100.0%
1st District	71,664	72,286	72,218	554	0.8%	-68	-0.1%	9.8%
2nd District	26,445	28,870	27,774	1,329	5.0%	-1,096	-3.8%	3.8%
3rd District	475,626	495,776	499,611	23,985	5.0%	3,835	0.8%	67.8%
4th District	136,496	136,459	136,953	457	0.3%	494	0.4%	18.6%

* Population of the communities served by each court site are taken from U.S. Census.

Note: This table is comparable to Table 6.01 on page 153 of the FY17 annual report.

N/S: Numbers 10 or less are not compared statistically.

1. Chevok court closed in FY 2014; McGrath and Tanana courts closed in FY 2015; Kake court closed in October 2018.

2. Beginning with FY 2019, the Petersburg venue population includes the population previously covered by Kake. The Hoonah population now includes the population numbers for Gustavus, Tenakee Springs, and Excursion Inlet, which were previously included within the Juneau venue population.

3. Craig court was renamed Prince of Wales in FY 2016.

4. St. Mary's court closed in 2016. Records for filings from the venue are still maintained separately.

5. The community of Barrow changed its name to Utqiagvik in 2016.



River beauty (dwarf fireweed), Copper River (Third Judicial District)



Bull moose, Chugach Mountains (Third Judicial District)

**Table 4.01. Total Superior Court Case Filings
FY 21 – FY 23**

Court	FY 21	FY 22	FY 23	Change	
				FY 21 to FY 23	FY 22 to FY 23
Anchorage	9,816	9,874	9,741	-1%	-1%
Angoon	0	4	2	N/S	N/S
Aniak	35	50	66	89%	32%
Bethel	790	883	798	1%	-10%
Cordova	29	41	49	69%	20%
Delta Junction	40	28	32	-20%	14%
Dillingham	273	231	203	-26%	-12%
Emmonak	79	84	76	-4%	-10%
Fairbanks	2,630	2,486	2,383	-9%	-4%
Fort Yukon	27	21	9	N/S	N/S
Galena	14	16	17	21%	6%
Glennallen	56	76	71	27%	-7%
Haines	10	6	12	N/S	N/S
Homer	338	333	314	-7%	-6%
Hoonah	2	3	5	N/S	N/S
Hooper Bay	53	51	72	36%	41%
Juneau	983	965	824	-16%	-15%
Kenai	1,255	1,217	1,168	-7%	-4%
Ketchikan	483	545	435	-10%	-20%
Kodiak	295	320	290	-2%	-9%
Kotzebue	375	384	320	-15%	-17%
Naknek	62	69	46	-26%	-33%
Nenana	38	34	40	5%	18%
Nome	385	318	346	-10%	9%
Palmer	2,909	2,964	2,884	-1%	-3%
Petersburg	64	74	53	-17%	-28%
Prince of Wales	138	101	105	-24%	4%
Sand Point	11	10	12	9%	N/S
Seward	132	147	162	23%	10%
Sitka	246	225	179	-27%	-20%
Skagway	2	0	3	N/S	N/S
St. Mary's ¹	74	83	61	-18%	-27%
St. Paul	6	16	6	N/S	N/S
Tok	50	58	43	-14%	-26%
Unalakleet	60	47	89	48%	89%
Unalaska	33	31	32	-3%	3%
Utqiagvik	242	289	302	25%	4%
Valdez	72	73	68	-6%	-7%
Wrangell	42	53	41	-2%	-23%
Yakutat	1	5	6	N/S	N/S
Total	22,150	22,215	21,365	-4%	-4%
1st District	1,971	1,981	1,665	-16%	-16%
2nd District	1,062	1,038	1,057	0%	2%
3rd District	15,287	15,402	15,046	-2%	-2%
4th District	3,830	3,794	3,597	-6%	-5%

N/S: Numbers 10 or less are not compared statistically.

1. St. Mary's court closed in 2016. Records for filings from the venue are still maintained separately.

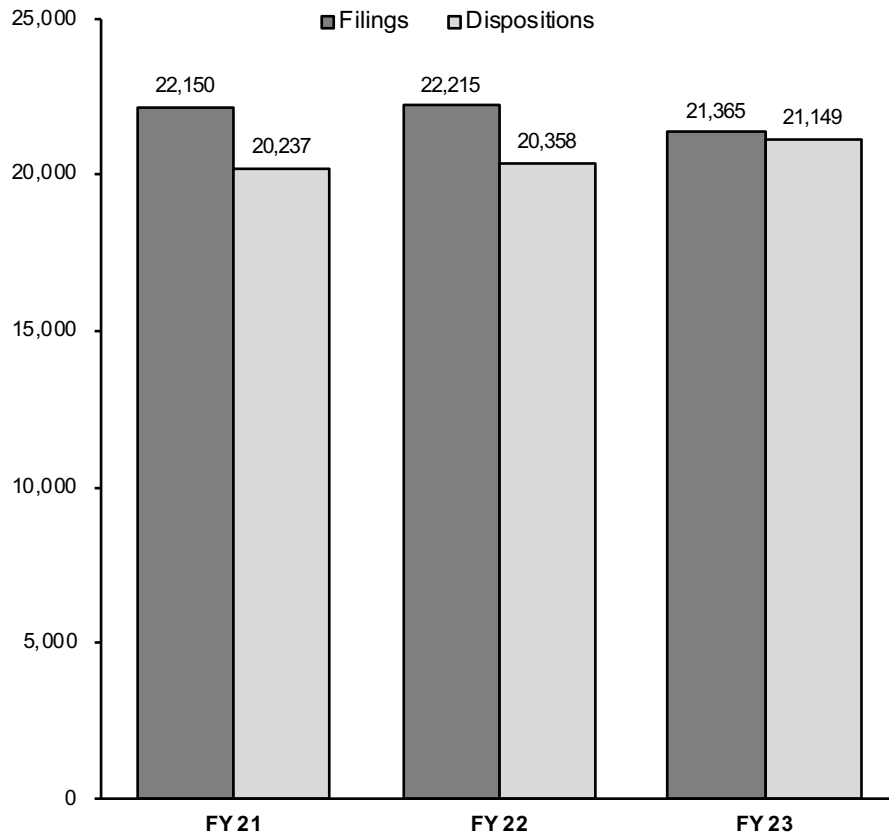
**Table 4.02. Total Superior Court Case Dispositions
FY 21 – FY 23**

Court	FY 21	FY 22	FY 23	Change	
				FY 21 to FY 23	FY 22 to FY 23
Anchorage	9,043	8,885	9,479	5%	7%
Angoon	1	1	6	N/S	N/S
Aniak	45	63	57	27%	-10%
Bethel	718	812	900	25%	11%
Cordova	18	37	43	139%	16%
Delta Junction	33	33	33	0%	0%
Dillingham	249	252	194	-22%	-23%
Emmonak	68	79	106	56%	34%
Fairbanks	2,505	2,525	2,438	-3%	-3%
Fort Yukon	24	19	20	-17%	5%
Galena	14	19	12	-14%	-37%
Glennallen	41	58	56	37%	-3%
Haines	5	5	6	N/S	N/S
Homer	245	362	333	36%	-8%
Hoonah	4	3	5	N/S	N/S
Hooper Bay	49	55	62	27%	13%
Juneau	948	943	910	-4%	-3%
Kenai	1,441	1,044	1,244	-14%	19%
Ketchikan	424	473	494	17%	4%
Kodiak	278	283	288	4%	2%
Kotzebue	306	355	352	15%	-1%
Naknek	44	65	60	36%	-8%
Nenana	35	50	30	-14%	-40%
Nome	311	290	262	-16%	-10%
Palmer	2,309	2,526	2,673	16%	6%
Petersburg	61	66	62	2%	-6%
Prince of Wales	135	120	98	-27%	-18%
Sand Point	12	10	11	-8%	N/S
Seward	120	114	145	21%	27%
Sitka	247	236	193	-22%	-18%
Skagway	2	0	3	N/S	N/S
St. Mary's ²	77	69	82	6%	19%
St. Paul	7	7	14	N/S	N/S
Tok	43	51	38	-12%	-25%
Unalakleet	44	43	58	32%	35%
Unalaska	42	27	30	-29%	11%
Utqiagvik	208	257	260	25%	1%
Valdez	39	71	52	33%	-27%
Wrangell	42	49	32	-24%	-35%
Yakutat	0	1	8	N/S	N/S
Total	20,237	20,358	21,149	5%	4%
1st District	1,869	1,897	1,817	-3%	-4%
2nd District	869	945	932	7%	-1%
3rd District	13,888	13,741	14,622	5%	6%
4th District	3,611	3,775	3,778	5%	0%

N/S: Numbers 10 or less are not compared statistically.

1. St. Mary's court closed in 2016. Records for filings from the venue are still maintained separately.

**Figure 4.01. Superior Court Filing and Disposition Trends
FY 21 – FY 23**



**Table 4.03. Superior Court Clearance Rates
FY 22 – FY 23**

Court	Filings		Dispositions		Clearance rates	
	FY 23	Change from FY 22	FY 23	Change from FY 22	FY 22	FY 23
Anchorage	9,741	-1%	9,479	7%	90%	97%
Angeon	2	N/S	6	N/S	N/S	N/S
Aniak	66	32%	57	-10%	126%	86%
Bethel	798	-10%	900	11%	92%	113%
Cordova	49	20%	43	16%	90%	88%
Delta Junction	32	14%	33	0%	118%	103%
Dillingham	203	-12%	194	-23%	109%	96%
Emmonak	76	-10%	106	34%	94%	140%
Fairbanks	2,383	-4%	2,438	-3%	102%	102%
Fort Yukon	9	N/S	20	5%	91%	N/S
Galena	17	6%	12	-37%	119%	71%
Glennallen	71	-7%	56	-3%	76%	79%
Haines	12	N/S	6	N/S	N/S	N/S
Homer	314	-6%	333	-8%	109%	106%
Hoonah	5	N/S	5	N/S	N/S	N/S
Hooper Bay	72	41%	62	13%	108%	86%
Juneau	824	-15%	910	-3%	98%	110%
Kenai	1,168	-4%	1,244	19%	86%	107%
Ketchikan	435	-20%	494	4%	87%	114%
Kodiak	290	-9%	288	2%	88%	99%
Kotzebue	320	-17%	352	-1%	92%	110%
Naknek	46	-33%	60	-8%	94%	130%
Nenana	40	18%	30	-40%	147%	75%
Nome	346	9%	262	-10%	91%	76%
Palmer	2,884	-3%	2,673	6%	85%	93%
Petersburg	53	-28%	62	-6%	89%	117%
Prince of Wales	105	4%	98	-18%	119%	93%
Sand Point	12	N/S	11	N/S	N/S	92%
Seward	162	10%	145	27%	78%	90%
Sitka	179	-20%	193	-18%	105%	108%
Skagway	3	N/S	3	N/S	N/S	N/S
St. Mary's ¹	61	-27%	82	19%	83%	134%
St. Paul	6	N/S	14	N/S	N/S	N/S
Tok	43	-26%	38	-25%	88%	88%
Unalakleet	89	89%	58	35%	92%	65%
Unalaska	32	3%	30	11%	87%	94%
Utqiagvik	302	4%	260	1%	89%	86%
Valdez	68	-7%	52	-27%	97%	77%
Wrangell	41	-23%	32	-35%	93%	78%
Yakutat	6	N/S	8	N/S	N/S	N/S
Total	21,365	-4%	21,149	4%	92%	99%
1st District	1,665	-16%	1,817	-4%	96%	109%
2nd District	1,057	2%	932	-1%	91%	88%
3rd District	15,046	-2%	14,622	6%	89%	97%
4th District	3,597	-5%	3,778	0%	100%	105%

Clearance rate measures whether a court is keeping up with its incoming caseload. Courts aspire to clear (i.e., dispose of) at least as many cases as have been filed in a period by having a clearance rate of 100 percent or higher.

N/S: Numbers 10 or less are not compared statistically.

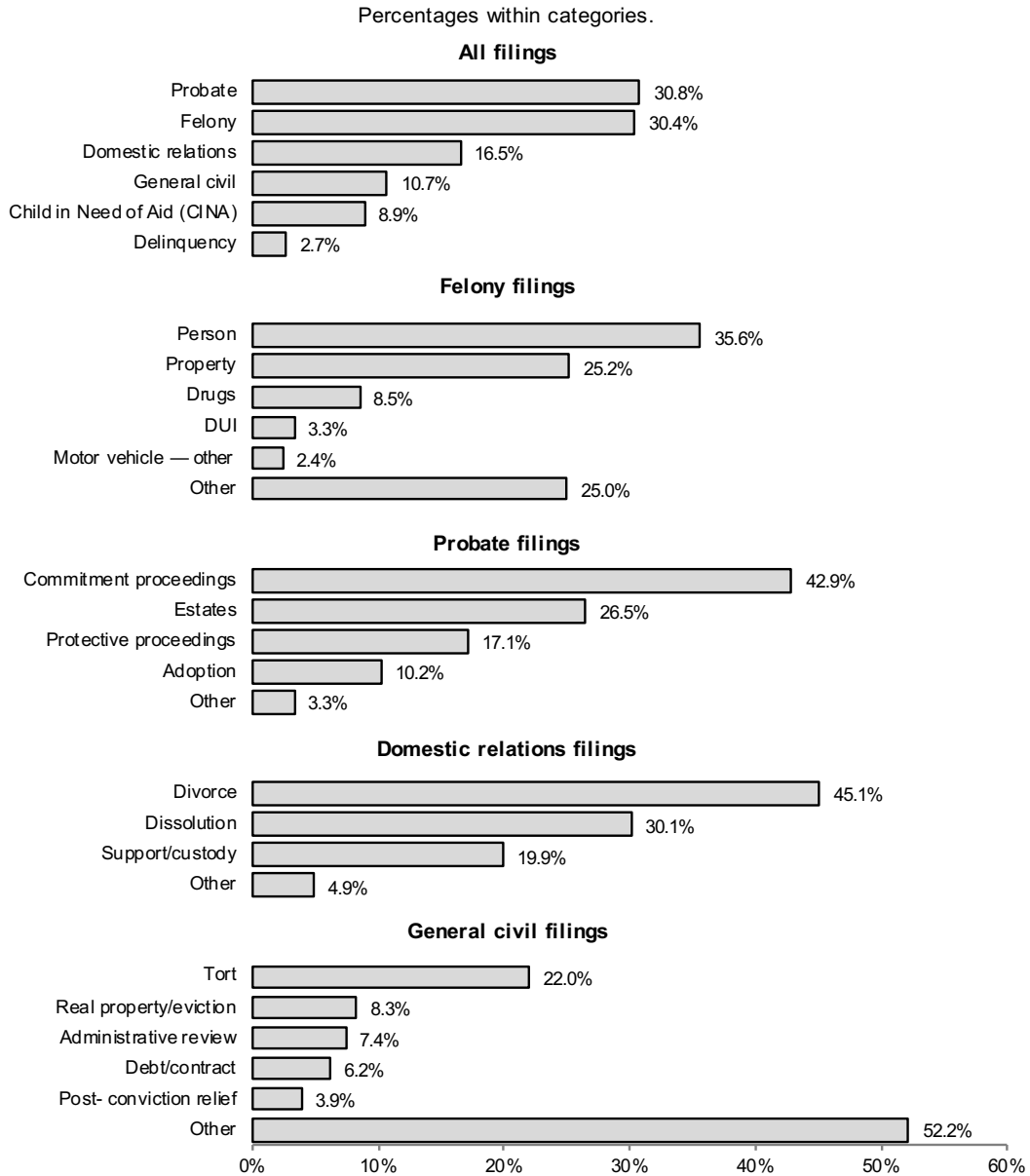
1. St. Mary's court closed in 2016. Records for filings from the venue are still maintained separately.

**Table 4.04. Superior Court Filings by Case Type
FY 23**

Court	Felony	CINA	Delinquency	Domestic relations	General civil	Probate	Total
Anchorage	2,972	736	223	1,539	1,187	3,084	9,741
Angoon	2	0	0	0	0	0	2
Aniak	44	9	13	0	0	0	66
Bethel	261	107	41	74	49	266	798
Cordova	18	4	3	5	5	14	49
Delta Junction	5	0	0	15	3	9	32
Dillingham	69	48	0	17	9	60	203
Emmonak	48	24	3	1	0	0	76
Fairbanks	619	230	50	578	273	633	2,383
Fort Yukon	7	0	1	1	0	0	9
Galena	16	1	0	0	0	0	17
Glennallen	20	13	1	16	8	13	71
Haines	12	0	0	0	0	0	12
Homer	101	15	7	58	45	88	314
Hoonah	5	0	0	0	0	0	5
Hooper Bay	45	16	11	0	0	0	72
Juneau	180	69	34	125	116	300	824
Kenai	326	63	44	221	127	387	1,168
Ketchikan	142	29	10	74	31	149	435
Kodiak	118	23	4	48	25	72	290
Kotzebue	144	45	19	33	15	64	320
Naknek	25	4	0	12	1	4	46
Nenana	33	0	0	6	1	0	40
Nome	96	46	8	39	26	131	346
Palmer	700	323	74	523	276	988	2,884
Petersburg	6	3	0	10	8	26	53
Prince of Wales	38	5	3	18	7	34	105
Sand Point	11	0	0	0	0	1	12
Seward	92	12	1	14	9	34	162
Sitka	51	0	11	26	13	78	179
Skagway	3	0	0	0	0	0	3
St. Mary's ¹	47	11	3	0	0	0	61
St. Paul	6	0	0	0	0	0	6
Tok	30	1	0	4	3	5	43
Unalakleet	87	2	0	0	0	0	89
Unalaska	15	0	0	4	7	6	32
Utqiagvik	62	55	12	38	29	106	302
Valdez	16	7	7	7	9	22	68
Wrangell	8	0	0	14	5	14	41
Yakutat	5	0	0	0	1	0	6
Total	6,485	1,901	583	3,520	2,288	6,588	21,365
% of total	30.4	8.9	2.7	16.5	10.7	30.8	100.0
1st District	452	106	58	267	181	601	1,665
2nd District	389	148	39	110	70	301	1,057
3rd District	4,489	1,248	364	2,464	1,708	4,773	15,046
4th District	1,155	399	122	679	329	913	3,597

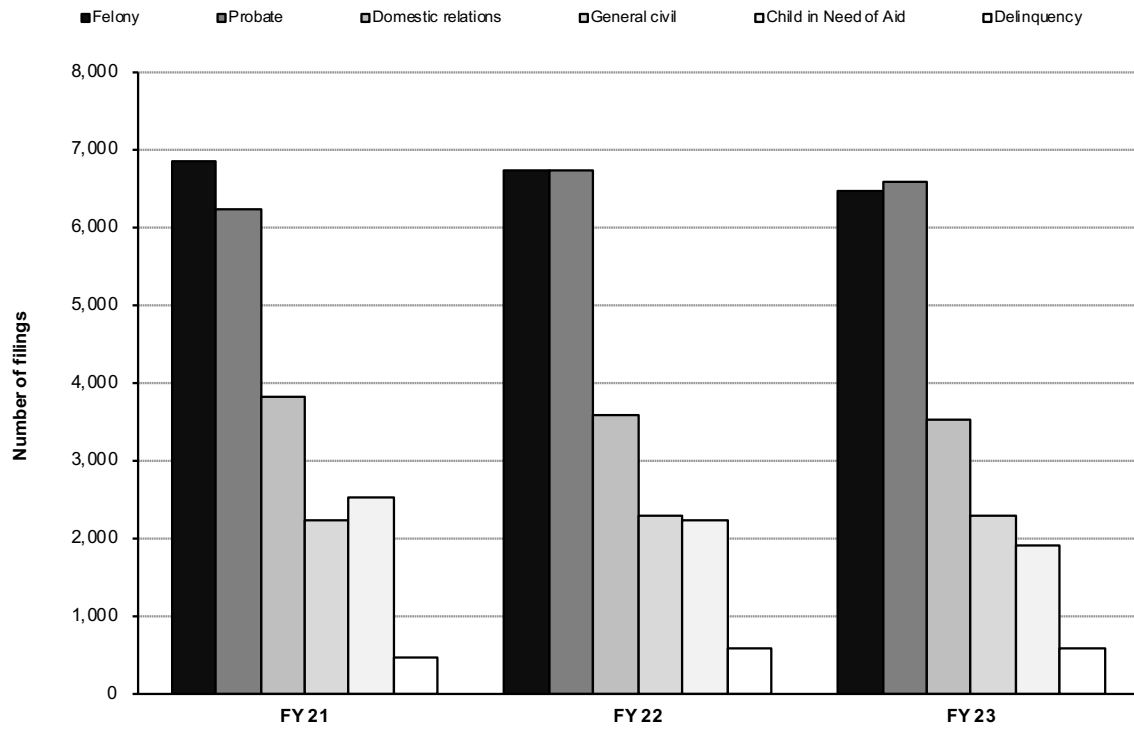
1. St. Mary's court closed in 2016. Records for filings from the venue are still maintained separately.

**Figure 4.02. Composition of Superior Court Filings
FY 23**



This chart analyzes the types of cases filed in Superior Court during FY23. Probate case filings are the major case filing type, comprising 30.8% of total case filings. Felony cases are second with 30.4% of the filings.

**Figure 4.03. Superior Court Filing Trends by Case Type
FY 21 – FY 23**



Filing Type	FY 21	FY 22	FY 23	FY 21 to FY 23 change	FY 22 to FY 23 change
Felony	6,854	6,736	6,485	-5%	-4%
Probate	6,244	6,746	6,588	6%	-2%
Domestic relations	3,815	3,600	3,520	-8%	-2%
General civil	2,234	2,299	2,288	2%	0%
Child in Need of Aid	2,530	2,233	1,901	-25%	-15%
Delinquency	473	601	583	23%	-3%
Total	22,150	22,215	21,365	-4%	-4%

**Table 4.05. Superior Court Dispositions by Case Type
FY 23**

Court	Felony	CINA	Delinquency	Domestic relations	General civil	Probate	Total
Anchorage	3,230	796	111	1,579	1,162	2,601	9,479
Angoon	5	0	0	1	0	0	6
Aniak	50	6	1	0	0	0	57
Bethel	366	141	35	66	48	244	900
Cordova	13	3	7	3	4	13	43
Delta Junction	4	0	1	15	5	8	33
Dillingham	63	37	2	20	11	61	194
Emmonak	82	21	2	1	0	0	106
Fairbanks	571	282	38	603	312	632	2,438
Fort Yukon	16	0	2	2	0	0	20
Galena	12	0	0	0	0	0	12
Glennallen	17	14	1	9	8	7	56
Haines	6	0	0	0	0	0	6
Homer	121	23	6	76	36	71	333
Hoonah	5	0	0	0	0	0	5
Hooper Bay	54	4	4	0	0	0	62
Juneau	236	69	32	114	128	331	910
Kenai	413	137	33	180	129	352	1,244
Ketchikan	126	45	8	93	41	181	494
Kodiak	90	60	6	42	25	65	288
Kotzebue	187	45	9	44	19	48	352
Naknek	40	8	0	5	2	5	60
Nenana	22	0	0	3	5	0	30
Nome	117	22	8	20	16	79	262
Palmer	691	339	47	535	288	773	2,673
Petersburg	9	3	0	11	11	28	62
Prince of Wales	34	9	1	18	5	31	98
Sand Point	8	0	0	1	1	1	11
Seward	83	16	1	9	11	25	145
Sitka	53	6	11	31	18	74	193
Skagway	2	0	0	0	1	0	3
St. Mary's ¹	72	5	5	0	0	0	82
St. Paul	12	0	2	0	0	0	14
Tok	31	0	0	5	1	1	38
Unalakleet	56	2	0	0	0	0	58
Unalaska	20	0	1	1	7	1	30
Utqiagvik	88	32	8	25	27	80	260
Valdez	13	4	2	13	9	11	52
Wrangell	9	0	0	10	3	10	32
Yakutat	7	0	0	0	1	0	8
Total	7,034	2,129	384	3,535	2,334	5,733	21,149
% of total	33.3	10.1	1.8	16.7	11.0	27.1	100.0
1st District	492	132	52	278	208	655	1,817
2nd District	448	101	25	89	62	207	932
3rd District	4,814	1,437	219	2,473	1,693	3,986	14,622
4th District	1,280	459	88	695	371	885	3,778

1. St. Mary's court closed in 2016. Records for filings from the venue are still maintained separately.

**Table 4.06. Felony Case Filings
FY 21 – FY 23**

Court	FY 21	FY 22	FY 23	Change	
				FY 21 to FY 23	FY 22 to FY 23
Anchorage	3,035	3,057	2,972	-2%	-3%
Angeon	0	3	2	N/S	N/S
Aniak	31	43	44	42%	2%
Bethel	259	328	261	1%	-20%
Cordova	16	10	18	13%	N/S
Delta Junction	10	5	5	N/S	N/S
Dillingham	116	85	69	-41%	-19%
Emmonak	56	58	48	-14%	-17%
Fairbanks	707	647	619	-12%	-4%
Fort Yukon	23	18	7	N/S	N/S
Galena	8	15	16	N/S	7%
Glennallen	21	24	20	-5%	-17%
Haines	9	6	12	N/S	N/S
Homer	110	125	101	-8%	-19%
Hoonah	1	2	5	N/S	N/S
Hooper Bay	43	42	45	5%	7%
Juneau	229	197	180	-21%	-9%
Kenai	424	361	326	-23%	-10%
Ketchikan	122	121	142	16%	17%
Kodiak	77	131	118	53%	-10%
Kotzebue	185	142	144	-22%	1%
Naknek	35	49	25	-29%	-49%
Nenana	30	24	33	10%	38%
Nome	157	116	96	-39%	-17%
Palmer	659	668	700	6%	5%
Petersburg	18	21	6	N/S	N/S
Prince of Wales	46	30	38	-17%	27%
Sand Point	9	9	11	N/S	N/S
Seward	76	83	92	21%	11%
Sitka	44	37	51	16%	38%
Skagway	1	0	3	N/S	N/S
St. Mary's ¹	55	61	47	-15%	-23%
St. Paul	6	11	6	N/S	N/S
Tok	37	43	30	-19%	-30%
Unalakleet	60	47	87	45%	85%
Unalaska	12	12	15	25%	25%
Utqiagvik	98	79	62	-37%	-22%
Valdez	14	12	16	14%	33%
Wrangell	14	9	8	N/S	N/S
Yakutat	1	5	5	N/S	N/S
Total	6,854	6,736	6,485	-5%	-4%
1st District	485	431	452	-7%	5%
2nd District	500	384	389	-22%	1%
3rd District	4,610	4,637	4,489	-3%	-3%
4th District	1,259	1,284	1,155	-8%	-10%

N/S: Numbers 10 or less are not compared statistically.

1. St. Mary's court closed in 2016. Records for filings from the venue are still maintained separately.

**Table 4.07. Felony Filings by Case Type
FY 23**

Court	Person	Property	Drugs	Weapon	Public order	DUI	Reckless driving	Motor	Protective	Fish & Game	Other	Total
								vehicle — other	order violation			
Anchorage	893	757	168	88	13	86	0	81	0	0	886	2,972
Angeon	1	0	0	0	0	0	0	0	0	0	1	2
Aniak	36	6	0	1	0	0	0	0	0	0	1	44
Bethel	184	37	5	3	6	1	0	0	0	0	25	261
Cordova	5	4	5	1	0	0	0	0	0	0	3	18
Delta Junction	3	2	0	0	0	0	0	0	0	0	0	5
Dillingham	42	17	0	3	2	0	0	0	0	0	5	69
Emmonak	38	5	0	2	0	2	0	0	0	0	1	48
Fairbanks	200	181	34	10	4	24	0	13	1	0	152	619
Fort Yukon	4	0	0	0	0	0	0	0	0	0	3	7
Galena	8	2	1	0	0	0	0	0	0	0	5	16
Glennallen	8	7	1	2	0	0	0	2	0	0	0	20
Haines	1	6	4	0	0	1	0	0	0	0	0	12
Homer	28	28	18	3	0	9	0	0	0	0	15	101
Hoonah	3	2	0	0	0	0	0	0	0	0	0	5
Hooper Bay	37	2	0	2	2	0	0	0	0	0	2	45
Juneau	55	44	31	1	2	4	0	1	0	0	42	180
Kenai	88	90	69	5	1	14	0	10	0	0	49	326
Ketchikan	42	49	30	1	5	1	0	2	0	0	12	142
Kodiak	33	25	39	2	0	1	0	2	0	0	16	118
Kotzebue	97	19	5	0	7	0	0	0	0	0	16	144
Naknek	10	6	5	0	0	0	0	0	0	0	4	25
Nenana	11	7	0	2	1	0	0	1	0	0	11	33
Nome	60	13	0	4	2	2	0	1	0	0	14	96
Palmer	225	234	65	31	4	52	0	38	0	0	51	700
Petersburg	3	1	1	0	0	0	0	0	0	0	1	6
Prince of Wales	11	7	15	1	0	1	0	0	0	0	3	38
Sand Point	5	5	0	0	0	1	0	0	0	0	0	11
Seward	21	19	33	3	0	6	0	1	0	0	9	92
Sitka	21	6	13	0	0	4	0	0	0	0	7	51
Skagway	1	1	1	0	0	0	0	0	0	0	0	3
St. Mary's ¹	36	4	0	2	1	2	0	1	0	0	1	47
St. Paul	5	1	0	0	0	0	0	0	0	0	0	6
Tok	11	6	0	0	0	0	0	0	0	0	13	30
Unalakleet	43	16	2	0	8	2	0	1	0	0	15	87
Unalaska	8	4	3	0	0	0	0	0	0	0	0	15
Utqiagvik	22	5	0	4	2	2	0	5	0	0	22	62
Valdez	4	10	1	0	0	1	0	0	0	0	0	16
Wrangell	2	3	1	1	0	0	0	0	0	0	1	8
Yakutat	3	0	0	0	1	0	0	0	0	0	1	5
Total	2,308	1,631	550	172	61	216	0	159	1	0	1,387	6,485
% of total	35.6	25.2	8.5	2.7	0.9	3.3	0.0	2.4	0.0	0.0	21.4	100.0
1st District	143	119	96	4	8	11	0	3	0	0	68	452
2nd District	222	53	7	8	19	6	0	7	0	0	67	389
3rd District	1,375	1,207	407	138	20	170	0	134	0	0	1,038	4,489
4th District	568	252	40	22	14	29	0	15	1	0	214	1,155

1. St. Mary's court closed in 2016. Records for filings from the venue are still maintained separately.

**Table 4.08. Criminal Case Types
FY 23**

Person	Public Order
Homicide	Riot
Assault	Disorderly Conduct
Reckless Endangerment	Harassment
Kidnapping	Indecent Viewing or Photography
Custodial Interference	Possess or Distribute Child Pornography
Human Trafficking	Cruelty to Animals
Sex Offenses	Recruiting Gang Members
Robbery	Gambling
Extortion	Alcohol Licensing Laws
Coercion	
	Motor Vehicle DUI
Property	Motor Vehicle Reckless Driving
Theft	
Burglary	Motor Vehicle Other
Criminal Trespass	
Vehicle Theft	Protection Order Violation
Arson	
Criminal Mischief	Fish and Game
Business and Commercial Offenses	
	Other
Drugs	Offenses against Public Administration
Misconduct Involving a Controlled Substance	Offenses against Family and
Manufacture, Delivery or Possession of	Vulnerable Adults
Imitation Controlled Substance	All other offenses, including cases in which
	a charging document was never filed
Weapons	
Misconduct Involving Weapons	
Criminal Possession of Explosives	
Unlawful Furnishing of Explosives	

Criminal cases typically contain multiple charges. The Alaska Court System categorizes cases for reporting purposes based on the most serious charge.

In FY07 the Alaska Court System changed the way it categorizes criminal cases for annual reporting. The categories now conform to the National Center for State Courts' national model for caseload statistical reporting. This change is intended to make Alaska statistics easier to compile, understand, and compare to those of other jurisdictions.

**Table 4.09. Felony Case Dispositions
FY 21 – FY 23**

Court	FY 21	FY 22	FY 23	Change	
				FY 21 to FY 23	FY 22 to FY 23
Anchorage	2,230	3,087	3,230	45%	5%
Angoon	1	1	5	N/S	N/S
Aniak	38	53	50	32%	-6%
Bethel	240	322	366	53%	14%
Cordova	5	17	13	N/S	-24%
Delta Junction	11	7	4	N/S	N/S
Dillingham	91	115	63	-31%	-45%
Emmonak	58	55	82	41%	49%
Fairbanks	653	726	571	-13%	-21%
Fort Yukon	23	17	16	-30%	-6%
Galena	9	16	12	N/S	-25%
Glennallen	16	21	17	6%	-19%
Haines	4	5	6	N/S	N/S
Homer	79	154	121	53%	-21%
Hoonah	3	2	5	N/S	N/S
Hooper Bay	40	45	54	35%	20%
Juneau	200	200	236	18%	18%
Kenai	522	264	413	-21%	56%
Ketchikan	120	107	126	5%	18%
Kodiak	81	107	90	11%	-16%
Kotzebue	142	165	187	32%	13%
Naknek	17	43	40	135%	-7%
Nenana	24	41	22	-8%	-46%
Nome	95	110	117	23%	6%
Palmer	450	612	691	54%	13%
Petersburg	15	19	9	N/S	N/S
Prince of Wales	45	40	34	-24%	-15%
Sand Point	10	9	8	N/S	N/S
Seward	62	71	83	34%	17%
Sitka	59	41	53	-10%	29%
Skagway	2	0	2	N/S	N/S
St. Mary's ¹	62	60	72	16%	20%
St. Paul	6	6	12	N/S	N/S
Tok	27	37	31	15%	-16%
Unalakleet	44	43	56	27%	30%
Unalaska	18	9	20	11%	N/S
Utqiagvik	60	94	88	47%	-6%
Valdez	5	16	13	N/S	-19%
Wrangell	12	12	9	N/S	N/S
Yakutat	0	1	7	N/S	N/S
Total	5,579	6,750	7,034	26%	4%
1st District	461	428	492	7%	15%
2nd District	341	412	448	31%	9%
3rd District	3,592	4,531	4,814	34%	6%
4th District	1,185	1,379	1,280	8%	-7%

N/S: Numbers 10 or less are not compared statistically.

1. St. Mary's court closed in 2016. Records for filings from the venue are still maintained separately.

**Table 4.10. Felony Case Dispositions by Manner of Disposition
FY 23**

Court	Cases disposed in District Court ¹						Cases disposed in Superior Court						Total
	Non-trial			Trial		Subtotal	Non-trial			Trial		Subtotal	
	Case dismissed	Guilty plea	Other	Guilty	Not guilty		Case dismissed	Guilty plea	Other	Guilty	Not guilty		
Anchorage	1,404	705	0	1	1	2,111	198	890	0	23	8	1,119	3,230
Angeon	0	1	0	0	0	1	0	4	0	0	0	4	5
Aniak	11	6	1	0	0	18	11	21	0	0	0	32	50
Bethel	54	52	0	0	0	106	64	187	0	6	3	260	366
Cordova	3	8	0	0	0	11	0	1	0	1	0	2	13
Delta Junction	1	0	0	0	0	1	1	2	0	0	0	3	4
Dillingham	18	14	0	0	0	32	4	23	0	3	1	31	63
Emmonak	15	9	0	0	0	24	16	41	0	0	1	58	82
Fairbanks	92	28	3	0	1	124	116	307	2	12	10	447	571
Fort Yukon	1	0	0	0	0	1	7	7	0	1	0	15	16
Galena	2	1	0	0	0	3	1	7	1	0	0	9	12
Glennallen	1	6	0	0	0	7	3	7	0	0	0	10	17
Haines	1	1	0	0	0	2	0	4	0	0	0	4	6
Homer	14	37	0	2	0	53	7	60	1	0	0	68	121
Hoonah	4	0	0	0	0	4	0	1	0	0	0	1	5
Hooper Bay	9	10	1	0	0	20	5	29	0	0	0	34	54
Juneau	25	6	0	0	0	31	50	147	1	6	1	205	236
Kenai	40	76	0	0	0	116	43	242	1	10	1	297	413
Ketchikan	31	16	0	0	0	47	13	60	0	6	0	79	126
Kodiak	5	16	0	0	0	21	11	54	0	2	2	69	90
Kotzebue	21	79	0	0	1	101	6	71	0	7	2	86	187
Naknek	8	10	0	0	0	18	4	18	0	0	0	22	40
Nenana	5	2	0	0	0	7	4	10	1	0	0	15	22
Nome	30	57	0	0	0	87	4	26	0	0	0	30	117
Palmer	101	142	3	0	0	246	94	342	0	8	1	445	691
Petersburg	3	1	0	0	0	4	0	5	0	0	0	5	9
Prince of Wales	12	6	0	0	0	18	1	14	0	1	0	16	34
Sand Point	2	1	0	0	0	3	0	5	0	0	0	5	8
Seward	9	16	0	0	0	25	4	51	0	2	1	58	83
Sitka	2	9	0	0	0	11	9	31	0	0	2	42	53
Skagway	0	0	0	0	0	0	1	0	0	0	1	2	2
St. Mary's ²	10	9	0	0	0	19	17	36	0	0	0	53	72
St. Paul	5	3	0	0	0	8	0	4	0	0	0	4	12
Tok	3	1	0	0	0	4	6	20	1	0	0	27	31
Unalakleet	16	28	0	0	0	44	0	12	0	0	0	12	56
Unalaska	1	9	0	0	0	10	3	7	0	0	0	10	20
Utqiagvik	19	5	0	0	0	24	39	24	0	1	0	64	88
Valdez	2	1	0	0	0	3	5	5	0	0	0	10	13
Wrangell	0	2	0	0	0	2	0	5	0	1	1	7	9
Yakutat	3	0	0	0	0	3	0	3	0	1	0	4	7
Total	1,983	1,373	8	3	3	3,370	747	2,783	8	91	35	3,664	7,034
% of total	28.2	19.6	0.1	0.0	0.0	47.9	10.6	39.6	0.1	1.3	0.5	52.1	100.0
1st District	81	42	0	0	0	123	74	274	1	15	5	369	492
2nd District	86	169	0	0	1	256	49	133	0	8	2	192	448
3rd District	1,613	1,044	3	3	1	2,664	376	1,709	2	49	14	2,150	4,814
4th District	203	118	5	0	1	327	248	667	5	19	14	953	1,280

1. All felony charges were either reduced to misdemeanors or dismissed while these cases were still in District Court. Convictions in these cases were for misdemeanors only.

2. St. Mary's court closed in 2016. Records for filings from the venue are still maintained separately.

**Table 4.11. Post-judgment Filings: Felony Petitions to
Revoke Probation
FY 21 – FY 23**

Court	FY 21	FY 22	FY 23	Change	
				FY 21 to FY 23	FY 22 to FY 23
Anchorage	843	729	756	-10%	4%
Angoon	2	0	0	N/S	N/S
Aniak	13	18	21	62%	17%
Bethel	104	87	90	-13%	3%
Cordova	0	0	2	N/S	N/S
Delta Junction	2	7	4	N/S	N/S
Dillingham	20	40	29	45%	-27%
Emmonak	34	17	34	0%	100%
Fairbanks	262	255	251	-4%	-2%
Fort Yukon	12	6	4	N/S	N/S
Galena	4	8	5	N/S	N/S
Glennallen	4	3	6	N/S	N/S
Haines	1	1	3	N/S	N/S
Homer	50	68	58	16%	-15%
Hoonah	0	0	1	N/S	N/S
Hooper Bay	17	14	9	N/S	N/S
Juneau	91	90	78	-14%	-13%
Kenai	257	275	178	-31%	-35%
Ketchikan	138	118	112	-19%	-5%
Kodiak	65	73	84	29%	15%
Kotzebue	66	101	116	76%	15%
Naknek	8	7	10	N/S	N/S
Nenana	5	9	9	N/S	N/S
Nome	54	63	71	31%	13%
Palmer	208	150	191	-8%	27%
Petersburg	11	7	7	N/S	N/S
Prince of Wales	51	20	22	-57%	10%
Sand Point	2	13	3	N/S	N/S
Seward	27	23	20	-26%	-13%
Sitka	18	27	32	78%	19%
Skagway	1	0	0	N/S	N/S
St. Mary's ¹	18	8	20	11%	N/S
St. Paul	1	1	4	N/S	N/S
Tok	8	6	4	N/S	N/S
Unalakleet	13	12	22	69%	83%
Unalaska	6	3	4	N/S	N/S
Utqiagvik	20	18	25	25%	39%
Valdez	9	8	8	N/S	N/S
Wrangell	7	12	4	N/S	N/S
Yakutat	0	4	0	N/S	N/S
Total	2,452	2,301	2,297	-6%	0%
1st District	320	279	259	-19%	-7%
2nd District	153	194	234	53%	21%
3rd District	1,500	1,393	1,353	-10%	-3%
4th District	479	435	451	-6%	4%

N/S: Numbers 10 or less are not compared statistically.

1. St. Mary's court closed in 2016. Records for filings from the venue are still maintained separately.

**Table 4.12. Probate Case Filings
FY 21 – FY 23**

Court	FY 21	FY 22	FY 23	Change	
				FY 21 to FY 23	FY 22 to FY 23
Anchorage	2,901	3,171	3,084	6%	-3%
Angoon	0	0	0	N/S	N/S
Aniak	0	0	0	N/S	N/S
Bethel	222	250	266	20%	6%
Cordova	5	14	14	N/S	0%
Delta Junction	13	4	9	N/S	N/S
Dillingham	39	43	60	54%	40%
Emmonak	1	1	0	N/S	N/S
Fairbanks	639	640	633	-1%	-1%
Fort Yukon	0	0	0	N/S	N/S
Galena	2	1	0	N/S	N/S
Glennallen	3	9	13	N/S	N/S
Haines	0	0	0	N/S	N/S
Homer	93	84	88	-5%	5%
Hoonah	1	1	0	N/S	N/S
Hooper Bay	0	0	0	N/S	N/S
Juneau	349	353	300	-14%	-15%
Kenai	377	391	387	3%	-1%
Ketchikan	167	213	149	-11%	-30%
Kodiak	76	87	72	-5%	-17%
Kotzebue	63	70	64	2%	-9%
Naknek	7	3	4	N/S	N/S
Nenana	0	1	0	N/S	N/S
Nome	89	89	131	47%	47%
Palmer	907	1,034	988	9%	-4%
Petersburg	21	26	26	24%	0%
Prince of Wales	44	39	34	-23%	-13%
Sand Point	1	0	1	N/S	N/S
Seward	22	15	34	55%	127%
Sitka	109	84	78	-28%	-7%
Skagway	0	0	0	N/S	N/S
St. Mary's ¹	0	0	0	N/S	N/S
St. Paul	0	0	0	N/S	N/S
Tok	6	4	5	N/S	N/S
Unalakleet	0	0	0	N/S	N/S
Unalaska	4	2	6	N/S	N/S
Utqiagvik	54	66	106	96%	61%
Valdez	14	22	22	57%	0%
Wrangell	15	29	14	-7%	-52%
Yakutat	0	0	0	N/S	N/S
Total	6,244	6,746	6,588	6%	-2%
1st District	706	745	601	-15%	-19%
2nd District	206	225	301	46%	34%
3rd District	4,449	4,875	4,773	7%	-2%
4th District	883	901	913	3%	1%

N/S: Numbers 10 or less are not compared statistically.

1. St. Mary's court closed in 2016. Records for filings from the venue are still maintained separately.

**Table 4.13. Probate Filings by Case Type
FY 23**

Court	Adoptions	Estates	Commitment proceedings	Protective proceedings¹	Minor proceedings²	Other	Total
Anchorage	274	693	1,489	476	80	72	3,084
Angeon	0	0	0	0	0	0	0
Aniak	0	0	0	0	0	0	0
Bethel	22	28	165	38	13	0	266
Cordova	1	2	7	4	0	0	14
Delta Junction	5	2	0	2	0	0	9
Dillingham	6	11	28	15	0	0	60
Emmonak	0	0	0	0	0	0	0
Fairbanks	76	255	154	126	18	4	633
Fort Yukon	0	0	0	0	0	0	0
Galena	0	0	0	0	0	0	0
Glennallen	1	7	1	3	0	1	13
Haines	0	0	0	0	0	0	0
Homer	14	29	19	26	0	0	88
Hoonah	0	0	0	0	0	0	0
Hooper Bay	0	0	0	0	0	0	0
Juneau	20	94	143	36	6	1	300
Kenai	62	153	77	94	1	0	387
Ketchikan	13	46	60	28	1	1	149
Kodiak	19	20	17	16	0	0	72
Kotzebue	13	9	34	8	0	0	64
Naknek	1	2	1	0	0	0	4
Nenana	0	0	0	0	0	0	0
Nome	9	21	76	25	0	0	131
Palmer	119	257	434	159	18	1	988
Petersburg	1	15	5	5	0	0	26
Prince of Wales	3	13	9	9	0	0	34
Sand Point	0	0	0	0	1	0	1
Seward	4	12	5	12	1	0	34
Sitka	2	28	38	10	0	0	78
Skagway	0	0	0	0	0	0	0
St. Mary's ³	0	0	0	0	0	0	0
St. Paul	0	0	0	0	0	0	0
Tok	0	3	0	2	0	0	5
Unalakleet	0	0	0	0	0	0	0
Unalaska	0	3	0	3	0	0	6
Utqiagvik	4	25	57	19	1	0	106
Valdez	4	11	2	5	0	0	22
Wrangell	1	5	3	4	0	1	14
Yakutat	0	0	0	0	0	0	0
Total	674	1,744	2,824	1,125	140	81	6,588
% of total	10.2	26.5	42.9	17.1	2.1	1.2	100.0
1st District	40	201	258	92	7	3	601
2nd District	26	55	167	52	1	0	301
3rd District	505	1,200	2,080	813	101	74	4,773
4th District	103	288	319	168	31	4	913

1. Guardianships, conservatorships, etc.

2. Minor settlements, emancipations, etc.

3. St. Mary's court closed in 2016. Records for filings from the venue are still maintained separately.

**Table 4.14. Probate Case Dispositions
FY 21 – FY 23**

Court	FY 21	FY 22	FY 23	Change	
				FY 21 to FY 23	FY 22 to FY 23
Anchorage	2,934	2,526	2,601	-11%	3%
Angoon	0	0	0	N/S	N/S
Aniak	0	0	0	N/S	N/S
Bethel	202	248	244	21%	-2%
Cordova	2	12	13	N/S	8%
Delta Junction	7	8	8	N/S	N/S
Dillingham	57	36	61	7%	69%
Emmonak	1	1	0	N/S	N/S
Fairbanks	552	574	632	14%	10%
Fort Yukon	0	0	0	N/S	N/S
Galena	2	2	0	N/S	N/S
Glennallen	4	11	7	N/S	N/S
Haines	0	0	0	N/S	N/S
Homer	54	64	71	31%	11%
Hoonah	1	1	0	N/S	N/S
Hooper Bay	0	0	0	N/S	N/S
Juneau	333	336	331	-1%	-1%
Kenai	411	317	352	-14%	11%
Ketchikan	167	186	181	8%	-3%
Kodiak	75	64	65	-13%	2%
Kotzebue	45	54	48	7%	-11%
Naknek	4	5	5	N/S	N/S
Nenana	0	0	0	N/S	N/S
Nome	63	68	79	25%	16%
Palmer	734	737	773	5%	5%
Petersburg	16	17	28	75%	65%
Prince of Wales	34	31	31	-9%	0%
Sand Point	0	0	1	N/S	N/S
Seward	14	10	25	79%	N/S
Sitka	91	91	74	-19%	-19%
Skagway	0	0	0	N/S	N/S
St. Mary's ¹	0	0	0	N/S	N/S
St. Paul	1	0	0	N/S	N/S
Tok	2	1	1	N/S	N/S
Unalakleet	0	0	0	N/S	N/S
Unalaska	5	1	1	N/S	N/S
Utqiagvik	57	54	80	40%	48%
Valdez	10	12	11	N/S	-8%
Wrangell	12	22	10	N/S	N/S
Yakutat	0	0	0	N/S	N/S
Total	5,890	5,489	5,733	-3%	4%
1st District	654	684	655	0%	-4%
2nd District	165	176	207	25%	18%
3rd District	4,305	3,795	3,986	-7%	5%
4th District	766	834	885	16%	6%

N/S: Numbers 10 or less are not compared statistically.

1. St. Mary's court closed in 2016. Records for filings from the venue are still maintained separately.

**Table 4.15. Domestic Relations Case Filings
FY 21 – FY 23**

Court	FY 21	FY 22	FY 23	Change	
				FY 21 to FY 23	FY 22 to FY 23
Anchorage	1,594	1,511	1,539	-3%	2%
Angoon	0	1	0	N/S	N/S
Aniak	0	0	0	N/S	N/S
Bethel	89	64	74	-17%	16%
Cordova	5	4	5	N/S	N/S
Delta Junction	14	15	15	7%	0%
Dillingham	19	17	17	-11%	0%
Emmonak	0	0	1	N/S	N/S
Fairbanks	647	639	578	-11%	-10%
Fort Yukon	1	2	1	N/S	N/S
Galena	2	0	0	N/S	N/S
Glennallen	11	10	16	45%	N/S
Haines	1	0	0	N/S	N/S
Homer	61	69	58	-5%	-16%
Hoonah	0	0	0	N/S	N/S
Hooper Bay	0	0	0	N/S	N/S
Juneau	169	136	125	-26%	-8%
Kenai	217	198	221	2%	12%
Ketchikan	74	93	74	0%	-20%
Kodiak	61	37	48	-21%	30%
Kotzebue	44	50	33	-25%	-34%
Naknek	6	7	12	N/S	N/S
Nenana	7	3	6	N/S	N/S
Nome	44	38	39	-11%	3%
Palmer	575	548	523	-9%	-5%
Petersburg	15	6	10	N/S	N/S
Prince of Wales	22	17	18	-18%	6%
Sand Point	0	1	0	N/S	N/S
Seward	13	21	14	8%	-33%
Sitka	46	40	26	-43%	-35%
Skagway	0	0	0	N/S	N/S
St. Mary's ¹	0	0	0	N/S	N/S
St. Paul	0	0	0	N/S	N/S
Tok	5	6	4	N/S	N/S
Unalakleet	0	0	0	N/S	N/S
Unalaska	7	3	4	N/S	N/S
Utqiagvik	41	36	38	-7%	6%
Valdez	18	16	7	N/S	N/S
Wrangell	7	12	14	N/S	17%
Yakutat	0	0	0	N/S	N/S
Total	3,815	3,600	3,520	-8%	-2%
1st District	334	305	267	-20%	-12%
2nd District	129	124	110	-15%	-11%
3rd District	2,587	2,442	2,464	-5%	1%
4th District	765	729	679	-11%	-7%

N/S: Numbers 10 or less are not compared statistically.

1. St. Mary's court closed in 2016. Records for filings from the venue are still maintained separately.

**Table 4.16. Domestic Relations Filings by Case Type
FY 23**

Court	Support/				Total
	Divorce	Dissolution	custody	Other	
Anchorage	679	517	278	65	1,539
Angoon	0	0	0	0	0
Aniak	0	0	0	0	0
Bethel	27	10	20	17	74
Cordova	2	1	2	0	5
Delta Junction	8	6	1	0	15
Dillingham	2	3	6	6	17
Emmonak	0	1	0	0	1
Fairbanks	324	137	92	25	578
Fort Yukon	0	1	0	0	1
Galena	0	0	0	0	0
Glennallen	5	5	5	1	16
Haines	0	0	0	0	0
Homer	29	25	3	1	58
Hoonah	0	0	0	0	0
Hooper Bay	0	0	0	0	0
Juneau	41	57	26	1	125
Kenai	94	63	57	7	221
Ketchikan	28	18	24	4	74
Kodiak	13	20	13	2	48
Kotzebue	8	3	13	9	33
Naknek	5	3	2	2	12
Nenana	0	3	1	2	6
Nome	18	5	10	6	39
Palmer	261	140	106	16	523
Petersburg	1	8	1	0	10
Prince of Wales	6	8	3	1	18
Sand Point	0	0	0	0	0
Seward	4	4	2	4	14
Sitka	10	6	9	1	26
Skagway	0	0	0	0	0
St. Mary's ¹	0	0	0	0	0
St. Paul	0	0	0	0	0
Tok	1	2	1	0	4
Unalakleet	0	0	0	0	0
Unalaska	0	2	2	0	4
Utqiagvik	16	6	13	3	38
Valdez	1	5	1	0	7
Wrangell	4	1	9	0	14
Yakutat	0	0	0	0	0
Total	1,587	1,060	700	173	3,520
% of total	45.1	30.1	19.9	4.9	100.0
1st District	90	98	72	7	267
2nd District	42	14	36	18	110
3rd District	1,095	788	477	104	2,464
4th District	360	160	115	44	679

1. St. Mary's court closed in 2016. Records for filings from the venue are still maintained separately.

**Table 4.17. Domestic Relations Case Dispositions
FY 21 – FY 23**

Court	FY 21	FY 22	FY 23	Change	
				FY 21 to FY 23	FY 22 to FY 23
Anchorage	1,679	1,337	1,579	-6%	18%
Angeon	0	0	1	N/S	N/S
Aniak	0	0	0	N/S	N/S
Bethel	108	87	66	-39%	-24%
Cordova	8	3	3	N/S	N/S
Delta Junction	13	15	15	15%	0%
Dillingham	27	17	20	-26%	18%
Emmonak	1	0	1	N/S	N/S
Fairbanks	667	598	603	-10%	1%
Fort Yukon	0	1	2	N/S	N/S
Galena	2	0	0	N/S	N/S
Glennallen	7	13	9	N/S	N/S
Haines	1	0	0	N/S	N/S
Homer	54	58	76	41%	31%
Hoonah	0	0	0	N/S	N/S
Hooper Bay	0	0	0	N/S	N/S
Juneau	192	136	114	-41%	-16%
Kenai	225	200	180	-20%	-10%
Ketchikan	70	77	93	33%	21%
Kodiak	57	52	42	-26%	-19%
Kotzebue	46	44	44	-4%	0%
Naknek	7	8	5	N/S	N/S
Nenana	10	6	3	N/S	N/S
Nome	43	40	20	-53%	-50%
Palmer	450	473	535	19%	13%
Petersburg	16	12	11	-31%	-8%
Prince of Wales	21	19	18	-14%	-5%
Sand Point	1	0	1	N/S	N/S
Seward	13	17	9	N/S	N/S
Sitka	45	38	31	-31%	-18%
Skagway	0	0	0	N/S	N/S
St. Mary's ¹	0	0	0	N/S	N/S
St. Paul	0	0	0	N/S	N/S
Tok	9	7	5	N/S	N/S
Unalakleet	0	0	0	N/S	N/S
Unalaska	13	5	1	N/S	N/S
Utqiagvik	47	38	25	-47%	-34%
Valdez	13	19	13	0%	-32%
Wrangell	12	9	10	N/S	N/S
Yakutat	0	0	0	N/S	N/S
Total	3,857	3,329	3,535	-8%	6%
1st District	357	291	278	-22%	-4%
2nd District	136	122	89	-35%	-27%
3rd District	2,554	2,202	2,473	-3%	12%
4th District	810	714	695	-14%	-3%

N/S: Numbers 10 or less are not compared statistically.

1. St. Mary's court closed in 2016. Records for filings from the venue are still maintained separately.

**Table 4.18. Domestic Relations Case Dispositions by
Manner of Disposition
FY 23**

Court	Stage of disposition				Total
	Dismissed	Dissolution/ divorce hearing	Trial	Other	
Anchorage	241	947	272	119	1,579
Angoon	1	0	0	0	1
Aniak	0	0	0	0	0
Bethel	19	27	4	16	66
Cordova	0	3	0	0	3
Delta Junction	0	7	7	1	15
Dillingham	5	7	1	7	20
Emmonak	0	1	0	0	1
Fairbanks	83	310	168	42	603
Fort Yukon	1	1	0	0	2
Galena	0	0	0	0	0
Glennallen	0	7	1	1	9
Haines	0	0	0	0	0
Homer	10	57	7	2	76
Hoonah	0	0	0	0	0
Hooper Bay	0	0	0	0	0
Juneau	20	85	4	5	114
Kenai	31	124	16	9	180
Ketchikan	17	56	15	5	93
Kodiak	4	34	3	1	42
Kotzebue	15	14	3	12	44
Naknek	1	2	0	2	5
Nenana	0	2	0	1	3
Nome	5	8	4	3	20
Palmer	45	299	156	35	535
Petersburg	1	8	1	1	11
Prince of Wales	3	13	2	0	18
Sand Point	0	1	0	0	1
Seward	2	6	0	1	9
Sitka	6	23	1	1	31
Skagway	0	0	0	0	0
St. Mary's ¹	0	0	0	0	0
St. Paul	0	0	0	0	0
Tok	1	2	2	0	5
Unalakleet	0	0	0	0	0
Unalaska	0	1	0	0	1
Utqiagvik	9	10	1	5	25
Valdez	1	7	2	3	13
Wrangell	1	5	2	2	10
Yakutat	0	0	0	0	0
Total	522	2,067	672	274	3,535
% of total	14.8	58.5	19.0	7.7	100.0
1st District	49	190	25	14	278
2nd District	29	32	8	20	89
3rd District	340	1,495	458	180	2,473
4th District	104	350	181	60	695

1. St. Mary's court closed in 2016. Records for filings from the venue are still maintained separately.

**Table 4.19. Post-judgment Filings: Motions to Modify
Custody, Support or Visitation
FY 21 – FY 23**

Court	FY 21	FY 22	FY 23	Change	
				FY 21 to FY 23	FY 22 to FY 23
Anchorage	409	429	407	0%	-5%
Angoon	0	0	0	N/S	N/S
Aniak	0	0	0	N/S	N/S
Bethel	3	5	5	N/S	N/S
Cordova	5	0	0	N/S	N/S
Delta Junction	4	3	2	N/S	N/S
Dillingham	4	8	7	N/S	N/S
Emmonak	0	0	0	N/S	N/S
Fairbanks	131	130	111	-15%	-15%
Fort Yukon	0	0	0	N/S	N/S
Galena	0	0	0	N/S	N/S
Glennallen	1	2	1	N/S	N/S
Haines	0	0	0	N/S	N/S
Homer	12	12	15	25%	25%
Hoonah	0	0	0	N/S	N/S
Hooper Bay	0	0	0	N/S	N/S
Juneau	23	40	25	9%	-37%
Kenai	77	99	109	42%	10%
Ketchikan	33	15	35	6%	133%
Kodiak	13	2	10	N/S	N/S
Kotzebue	5	8	3	N/S	N/S
Naknek	1	1	0	N/S	N/S
Nenana	0	0	2	N/S	N/S
Nome	6	5	7	N/S	N/S
Palmer	169	201	184	9%	-8%
Petersburg	10	3	7	N/S	N/S
Prince of Wales	4	9	8	N/S	N/S
Sand Point	0	0	0	N/S	N/S
Seward	4	4	1	N/S	N/S
Sitka	13	8	10	N/S	N/S
Skagway	0	0	0	N/S	N/S
St. Mary's ¹	0	0	0	N/S	N/S
St. Paul	0	0	0	N/S	N/S
Tok	1	0	1	N/S	N/S
Unalakleet	0	0	0	N/S	N/S
Unalaska	0	0	0	N/S	N/S
Utqiagvik	1	6	1	N/S	N/S
Valdez	4	2	2	N/S	N/S
Wrangell	3	2	6	N/S	N/S
Yakutat	0	0	0	N/S	N/S
Total	936	994	959	2%	-4%
1st District	86	77	91	6%	18%
2nd District	12	19	11	-8%	-42%
3rd District	699	760	736	5%	-3%
4th District	139	138	121	-13%	-12%

N/S: Numbers 10 or less are not compared statistically.

1. St. Mary's court closed in 2016. Records for filings from the venue are still maintained separately.

**Table 4.20. Superior Court General Civil Case Filings
FY 21 – FY 23**

Court	FY 21	FY 22	FY 23	Change	
				FY 21 to FY 23	FY 22 to FY 23
Anchorage	1,146	1,101	1,187	4%	8%
Angoon	0	0	0	N/S	N/S
Aniak	0	0	0	N/S	N/S
Bethel	43	44	49	14%	11%
Cordova	3	3	5	N/S	N/S
Delta Junction	3	3	3	N/S	N/S
Dillingham	10	11	9	N/S	N/S
Emmonak	0	0	0	N/S	N/S
Fairbanks	266	309	273	3%	-12%
Fort Yukon	0	1	0	N/S	N/S
Galena	1	0	0	N/S	N/S
Glennallen	4	4	8	N/S	N/S
Haines	0	0	0	N/S	N/S
Homer	42	25	45	7%	80%
Hoonah	0	0	0	N/S	N/S
Hooper Bay	0	0	0	N/S	N/S
Juneau	127	153	116	-9%	-24%
Kenai	113	134	127	12%	-5%
Ketchikan	40	51	31	-22%	-39%
Kodiak	24	27	25	4%	-7%
Kotzebue	14	22	15	7%	-32%
Naknek	1	1	1	N/S	N/S
Nenana	1	4	1	N/S	N/S
Nome	21	16	26	24%	63%
Palmer	274	266	276	1%	4%
Petersburg	5	16	8	N/S	N/S
Prince of Wales	7	6	7	N/S	N/S
Sand Point	1	0	0	N/S	N/S
Seward	11	10	9	N/S	N/S
Sitka	29	22	13	-55%	-41%
Skagway	1	0	0	N/S	N/S
St. Mary's ¹	0	0	0	N/S	N/S
St. Paul	0	0	0	N/S	N/S
Tok	0	4	3	N/S	N/S
Unalakleet	0	0	0	N/S	N/S
Unalaska	6	14	7	N/S	N/S
Utqiagvik	24	38	29	21%	-24%
Valdez	11	11	9	N/S	N/S
Wrangell	6	3	5	N/S	N/S
Yakutat	0	0	1	N/S	N/S
Total	2,234	2,299	2,288	2%	0%
1st District	215	251	181	-16%	-28%
2nd District	59	76	70	19%	-8%
3rd District	1,646	1,607	1,708	4%	6%
4th District	314	365	329	5%	-10%

N/S: Numbers 10 or less are not compared statistically.

1. St. Mary's court closed in 2016. Records for filings from the venue are still maintained separately.

**Table 4.21. Superior Court General Civil Filings by Case Type
FY 23**

Court	Adminis- trative review	Debt/ contract	Tort	Real property/ eviction	Post- conviction relief	Other	Total
Anchorage	104	85	300	79	41	578	1,187
Angeon	0	0	0	0	0	0	0
Aniak	0	0	0	0	0	0	0
Bethel	0	3	5	0	6	35	49
Cordova	2	0	1	1	0	1	5
Delta Junction	1	0	0	0	0	2	3
Dillingham	0	0	2	1	0	6	9
Emmonak	0	0	0	0	0	0	0
Fairbanks	11	10	49	36	11	156	273
Fort Yukon	0	0	0	0	0	0	0
Galena	0	0	0	0	0	0	0
Glennallen	0	1	0	0	0	7	8
Haines	0	0	0	0	0	0	0
Homer	1	6	9	6	0	23	45
Hoonah	0	0	0	0	0	0	0
Hooper Bay	0	0	0	0	0	0	0
Juneau	11	8	20	13	5	59	116
Kenai	11	3	28	7	4	74	127
Ketchikan	1	2	2	6	3	17	31
Kodiak	2	2	3	3	3	12	25
Kotzebue	2	0	7	0	0	6	15
Naknek	0	0	0	0	0	1	1
Nenana	0	0	0	1	0	0	1
Nome	0	1	3	2	5	15	26
Palmer	20	17	53	22	9	155	276
Petersburg	0	1	0	4	0	3	8
Prince of Wales	1	0	1	0	0	5	7
Sand Point	0	0	0	0	0	0	0
Seward	1	0	1	1	0	6	9
Sitka	0	0	3	3	0	7	13
Skagway	0	0	0	0	0	0	0
St. Mary's ¹	0	0	0	0	0	0	0
St. Paul	0	0	0	0	0	0	0
Tok	0	0	3	0	0	0	3
Unalakleet	0	0	0	0	0	0	0
Unalaska	0	0	2	1	0	4	7
Utqiagvik	1	3	7	0	2	16	29
Valdez	0	1	1	2	0	5	9
Wrangell	0	0	2	1	0	2	5
Yakutat	0	0	1	0	0	0	1
Total	169	143	503	189	89	1,195	2,288
% of total	7.4	6.2	22.0	8.3	3.9	52.2	100.0
1st District	13	11	29	27	8	93	181
2nd District	3	4	17	2	7	37	70
3rd District	141	115	400	123	57	872	1,708
4th District	12	13	57	37	17	193	329

1. St. Mary's court closed in 2016. Records for filings from the venue are still maintained separately.

**Table 4.22. Superior Court General Civil Case Types
FY 23**

Administrative Review	Eviction/Real Property
Administrative Appeal	Foreclosure
Appeal from District Court	Quiet Title
Petition for Review	Condemnation
	Forcible Entry and Detainer
	Real Estate Matter
Debt/Contract	Application for Post-conviction Relief
Debt — General	
Other Contract	
Tort	Other
Personal Injury — Auto	Change of Name
Personal Injury — Other	Election Contest or Recount Appeal
Wrongful Death	Injunctive Relief
Property Damage — Auto	Habeas Corpus
Property Damage — Other	Registration of Foreign Judgment
Medical Malpractice	Coroner
Legal Malpractice	Order to Show Cause
Other Malpractice	Contempt
	Other

**Table 4.23. Superior Court General Civil Case Dispositions
FY 21 – FY 23**

Court	FY 21	FY 22	FY 23	Change	
				FY 21 to FY 23	FY 22 to FY 23
Anchorage	1,085	1,140	1,162	7%	2%
Angeon	0	0	0	N/S	N/S
Aniak	0	0	0	N/S	N/S
Bethel	45	39	48	7%	23%
Cordova	3	4	4	N/S	N/S
Delta Junction	2	3	5	N/S	N/S
Dillingham	10	11	11	N/S	0%
Emmonak	0	0	0	N/S	N/S
Fairbanks	257	292	312	21%	7%
Fort Yukon	0	1	0	N/S	N/S
Galena	1	0	0	N/S	N/S
Glennallen	3	4	8	N/S	N/S
Haines	0	0	0	N/S	N/S
Homer	34	37	36	6%	-3%
Hoonah	0	0	0	N/S	N/S
Hooper Bay	0	0	0	N/S	N/S
Juneau	131	147	128	-2%	-13%
Kenai	125	124	129	3%	4%
Ketchikan	31	55	41	32%	-25%
Kodiak	14	28	25	79%	-11%
Kotzebue	13	21	19	46%	-10%
Naknek	3	0	2	N/S	N/S
Nenana	1	1	5	N/S	N/S
Nome	21	15	16	-24%	7%
Palmer	235	256	288	23%	13%
Petersburg	4	11	11	N/S	0%
Prince of Wales	5	10	5	N/S	N/S
Sand Point	1	1	1	N/S	N/S
Seward	13	6	11	-15%	N/S
Sitka	25	29	18	-28%	-38%
Skagway	0	0	1	N/S	N/S
St. Mary's ¹	0	0	0	N/S	N/S
St. Paul	0	0	0	N/S	N/S
Tok	4	3	1	N/S	N/S
Unalakleet	0	0	0	N/S	N/S
Unalaska	2	11	7	N/S	N/S
Utqiagvik	13	34	27	108%	-21%
Valdez	7	11	9	N/S	N/S
Wrangell	6	4	3	N/S	N/S
Yakutat	0	0	1	N/S	N/S
Total	2,094	2,298	2,334	11%	2%
1st District	202	256	208	3%	-19%
2nd District	47	70	62	32%	-11%
3rd District	1,535	1,633	1,693	10%	4%
4th District	310	339	371	20%	9%

N/S: Numbers 10 or less are not compared statistically.

1. St. Mary's court closed in 2016. Records for filings from the venue are still maintained separately.

**Table 4.24. Superior Court General Civil Case Dispositions
by Manner of Disposition
FY 23**

Court	Stage of disposition						Total
	Dismiss/ settle	Default judgment	Summary judgment	Court trial	Jury trial	Other	
Anchorage	639	24	44	4	4	447	1,162
Angeon	0	0	0	0	0	0	0
Aniak	0	0	0	0	0	0	0
Bethel	12	0	0	0	0	36	48
Cordova	1	1	0	0	0	2	4
Delta Junction	1	0	0	0	0	4	5
Dillingham	5	0	1	0	0	5	11
Emmonak	0	0	0	0	0	0	0
Fairbanks	129	11	17	1	1	153	312
Fort Yukon	0	0	0	0	0	0	0
Galena	0	0	0	0	0	0	0
Glennallen	2	0	0	0	0	6	8
Haines	0	0	0	0	0	0	0
Homer	15	0	2	1	0	18	36
Hoonah	0	0	0	0	0	0	0
Hooper Bay	0	0	0	0	0	0	0
Juneau	53	5	15	1	0	54	128
Kenai	62	2	6	2	0	57	129
Ketchikan	19	2	2	2	0	16	41
Kodiak	8	1	1	0	0	15	25
Kotzebue	7	0	0	0	0	12	19
Naknek	0	0	0	0	0	2	2
Nenana	2	1	1	0	0	1	5
Nome	4	2	1	0	0	9	16
Palmer	112	8	11	2	0	155	288
Petersburg	4	1	2	0	0	4	11
Prince of Wales	0	0	0	0	0	5	5
Sand Point	1	0	0	0	0	0	1
Seward	6	0	0	0	0	5	11
Sitka	5	1	1	0	0	11	18
Skagway	1	0	0	0	0	0	1
St. Mary's ¹	0	0	0	0	0	0	0
St. Paul	0	0	0	0	0	0	0
Tok	0	0	0	0	0	1	1
Unalakleet	0	0	0	0	0	0	0
Unalaska	4	0	0	0	0	3	7
Utqiagvik	17	0	0	0	0	10	27
Valdez	4	0	2	0	0	3	9
Wrangell	0	1	0	0	0	2	3
Yakutat	0	0	0	0	0	1	1
Total	1,113	60	106	13	5	1,037	2,334
% of total	47.7	2.6	4.5	0.6	0.2	44.4	100.0
1st District	82	10	20	3	0	93	208
2nd District	28	2	1	0	0	31	62
3rd District	859	36	67	9	4	718	1,693
4th District	144	12	18	1	1	195	371

1. St. Mary's court closed in 2016. Records for filings from the venue are still maintained separately.

**Table 4.25. CINA Case Filings
FY 21 – FY 23**

Court	FY 21	FY 22	FY 23	Change	
				FY 21 to FY 23	FY 22 to FY 23
Anchorage	924	780	736	-20%	-6%
Angeon	0	0	0	N/S	N/S
Aniak	0	3	9	N/S	N/S
Bethel	151	159	107	-29%	-33%
Cordova	0	7	4	N/S	N/S
Delta Junction	0	0	0	N/S	N/S
Dillingham	82	68	48	-41%	-29%
Emmonak	16	21	24	50%	14%
Fairbanks	335	222	230	-31%	4%
Fort Yukon	0	0	0	N/S	N/S
Galena	0	0	1	N/S	N/S
Glennallen	15	28	13	-13%	-54%
Haines	0	0	0	N/S	N/S
Homer	29	21	15	-48%	-29%
Hoonah	0	0	0	N/S	N/S
Hooper Bay	3	6	16	N/S	N/S
Juneau	79	85	69	-13%	-19%
Kenai	102	96	63	-38%	-34%
Ketchikan	72	54	29	-60%	-46%
Kodiak	55	25	23	-58%	-8%
Kotzebue	55	94	45	-18%	-52%
Naknek	12	7	4	N/S	N/S
Nenana	0	0	0	N/S	N/S
Nome	61	40	46	-25%	15%
Palmer	446	377	323	-28%	-14%
Petersburg	4	5	3	N/S	N/S
Prince of Wales	18	7	5	N/S	N/S
Sand Point	0	0	0	N/S	N/S
Seward	7	16	12	N/S	-25%
Sitka	8	24	0	N/S	N/S
Skagway	0	0	0	N/S	N/S
St. Mary's ¹	18	18	11	-39%	-39%
St. Paul	0	3	0	N/S	N/S
Tok	1	0	1	N/S	N/S
Unalakleet	0	0	2	N/S	N/S
Unalaska	2	0	0	N/S	N/S
Utqiagvik	22	56	55	150%	-2%
Valdez	13	11	7	N/S	N/S
Wrangell	0	0	0	N/S	N/S
Yakutat	0	0	0	N/S	N/S
Total	2,530	2,233	1,901	-25%	-15%
1st District	181	175	106	-41%	-39%
2nd District	138	190	148	7%	-22%
3rd District	1,687	1,439	1,248	-26%	-13%
4th District	524	429	399	-24%	-7%

N/S: Numbers 10 or less are not compared statistically.

1. St. Mary's court closed in 2016. Records for filings from the venue are still maintained separately.

**Table 4.26. Delinquency Case Filings
FY 21 – FY 23**

Court	FY 21	FY 22	FY 23	Change	
				FY 21 to FY 23	FY 22 to FY 23
Anchorage	216	254	223	3%	-12%
Angoon	0	0	0	N/S	N/S
Aniak	4	4	13	N/S	N/S
Bethel	26	38	41	58%	8%
Cordova	0	3	3	N/S	N/S
Delta Junction	0	1	0	N/S	N/S
Dillingham	7	7	0	N/S	N/S
Emmonak	6	4	3	N/S	N/S
Fairbanks	36	29	50	39%	72%
Fort Yukon	3	0	1	N/S	N/S
Galena	1	0	0	N/S	N/S
Glennallen	2	1	1	N/S	N/S
Haines	0	0	0	N/S	N/S
Homer	3	9	7	N/S	N/S
Hoonah	0	0	0	N/S	N/S
Hooper Bay	7	3	11	N/S	N/S
Juneau	30	41	34	13%	-17%
Kenai	22	37	44	100%	19%
Ketchikan	8	13	10	N/S	N/S
Kodiak	2	13	4	N/S	N/S
Kotzebue	14	6	19	36%	N/S
Naknek	1	2	0	N/S	N/S
Nenana	0	2	0	N/S	N/S
Nome	13	19	8	N/S	N/S
Palmer	48	71	74	54%	4%
Petersburg	1	0	0	N/S	N/S
Prince of Wales	1	2	3	N/S	N/S
Sand Point	0	0	0	N/S	N/S
Seward	3	2	1	N/S	N/S
Sitka	10	18	11	N/S	-39%
Skagway	0	0	0	N/S	N/S
St. Mary's ¹	1	4	3	N/S	N/S
St. Paul	0	2	0	N/S	N/S
Tok	1	1	0	N/S	N/S
Unalakleet	0	0	0	N/S	N/S
Unalaska	2	0	0	N/S	N/S
Utqiagvik	3	14	12	N/S	-14%
Valdez	2	1	7	N/S	N/S
Wrangell	0	0	0	N/S	N/S
Yakutat	0	0	0	N/S	N/S
Total	473	601	583	23%	-3%
1st District	50	74	58	16%	-22%
2nd District	30	39	39	30%	0%
3rd District	308	402	364	18%	-9%
4th District	85	86	122	44%	42%

N/S: Numbers 10 or less are not compared statistically.

1. St. Mary's court closed in 2016. Records for filings from the venue are still maintained separately.

**Table 4.27. CINA and Delinquency Filings by Case Type
FY 23**

Court	Child in Need of Aid	Petitions to terminate parental rights		Total	Delinquency	Petitions to revoke probation		Total
Anchorage	457	279		736	177	46		223
Angeon	0	0		0	0	0		0
Aniak	9	0		9	13	0		13
Bethel	93	14		107	32	9		41
Cordova	4	0		4	0	3		3
Delta Junction	0	0		0	0	0		0
Dillingham	36	12		48	0	0		0
Emmonak	24	0		24	3	0		3
Fairbanks	160	70		230	46	4		50
Fort Yukon	0	0		0	0	1		1
Galena	1	0		1	0	0		0
Glennallen	8	5		13	1	0		1
Haines	0	0		0	0	0		0
Homer	11	4		15	6	1		7
Hoonah	0	0		0	0	0		0
Hooper Bay	16	0		16	9	2		11
Juneau	41	28		69	30	4		34
Kenai	40	23		63	36	8		44
Ketchikan	19	10		29	9	1		10
Kodiak	14	9		23	4	0		4
Kotzebue	34	11		45	17	2		19
Naknek	4	0		4	0	0		0
Nenana	0	0		0	0	0		0
Nome	41	5		46	5	3		8
Palmer	195	128		323	72	2		74
Petersburg	3	0		3	0	0		0
Prince of Wales	5	0		5	3	0		3
Sand Point	0	0		0	0	0		0
Seward	8	4		12	1	0		1
Sitka	0	0		0	11	0		11
Skagway	0	0		0	0	0		0
St. Mary's ¹	11	0		11	3	0		3
St. Paul	0	0		0	0	0		0
Tok	1	0		1	0	0		0
Unalakleet	2	0		2	0	0		0
Unalaska	0	0		0	0	0		0
Utqiagvik	55	0		55	11	1		12
Valdez	7	0		7	7	0		7
Wrangell	0	0		0	0	0		0
Yakutat	0	0		0	0	0		0
Total	1,299	602		1,901	496	87		583
% of total	68.3	31.7		100.0	85.1	14.9		100.0
1st District	68	38		106	53	5		58
2nd District	132	16		148	33	6		39
3rd District	784	464		1,248	304	60		364
4th District	315	84		399	106	16		122

1. St. Mary's court closed in 2016. Records for filings from the venue are still maintained separately.



Beach Lake, Birchwood (Third Judicial District)



Forget-me-nots, Douglas Island (First Judicial District)

**Table 5.01. Total District Court Case Filings
FY 21 – FY 23**

Court	FY 21	FY 22	FY 23	Change	
				FY 21 to FY 23	FY 22 to FY 23
Anchorage ¹	28,716	36,006	29,870	4%	-17%
Angoon	9	9	9	N/S	N/S
Aniak	67	73	90	34%	23%
Bethel	1,346	1,103	1,001	-26%	-9%
Cordova	134	124	125	-7%	1%
Delta Junction	309	786	529	71%	-33%
Dillingham	580	461	421	-27%	-9%
Emmonak	131	118	85	-35%	-28%
Fairbanks	9,826	8,717	8,658	-12%	-1%
Fort Yukon	74	56	48	-35%	-14%
Galena	63	50	47	-25%	-6%
Glennallen	435	611	412	-5%	-33%
Haines	117	125	143	22%	14%
Homer	1,333	1,616	1,949	46%	21%
Hoonah	59	42	50	-15%	19%
Hooper Bay	141	96	86	-39%	-10%
Juneau	3,959	3,646	3,291	-17%	-10%
Kenai	6,787	7,443	4,447	-34%	-40%
Ketchikan	1,659	1,598	1,508	-9%	-6%
Kodiak	851	960	1,046	23%	9%
Kotzebue	528	487	451	-15%	-7%
Naknek	307	307	239	-22%	-22%
Nenana	2,417	2,383	1,626	-33%	-32%
Nome	1,305	726	807	-38%	11%
Palmer	13,122	11,527	8,439	-36%	-27%
Petersburg	323	237	177	-45%	-25%
Prince of Wales	715	730	699	-2%	-4%
Sand Point	43	46	32	-26%	-30%
Seward	1,335	1,941	1,805	35%	-7%
Sitka	742	557	600	-19%	8%
Skagway	22	26	34	55%	31%
St. Mary's ²	192	149	73	-62%	-51%
St. Paul	15	11	10	N/S	N/S
Tok	542	281	372	-31%	32%
Unalakleet	154	150	164	6%	9%
Unalaska	231	266	237	3%	-11%
Utiagvik	607	587	598	-1%	2%
Valdez	236	245	229	-3%	-7%
Wrangell	149	140	158	6%	13%
Yakutat	37	39	23	-38%	-41%
Total	79,618	84,475	70,588	-11%	-16%
1st District	7,791	7,149	6,692	-14%	-6%
2nd District	2,594	1,950	2,020	-22%	4%
3rd District	54,125	61,564	49,261	-9%	-20%
4th District	15,108	13,812	12,615	-17%	-9%

N/S: Numbers 10 or less are not compared statistically.

1. The FY22 numbers also include numbers for minor citations previously unreported from the period April 30, 2021 through June 30, 2021.

2. St. Mary's court closed in 2016. Records for filings from the venue are still maintained separately.

**Table 5.02. Total District Court Case Dispositions
FY 21 – FY 23**

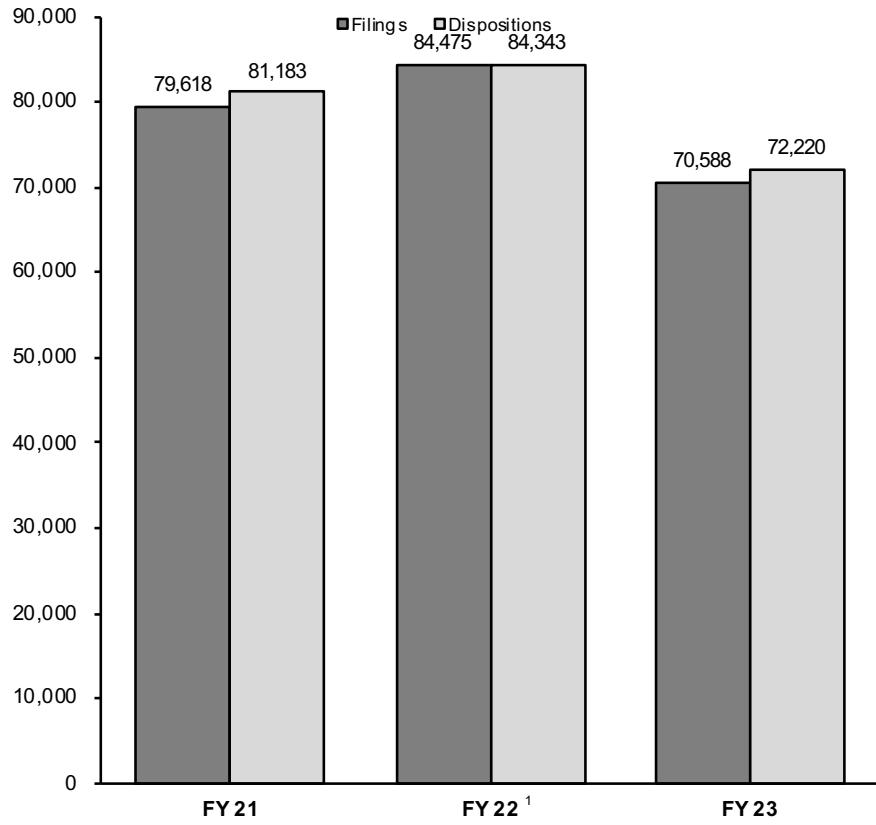
Court	FY 21	FY 22	FY 23	Change	
				FY 21 to FY 23	FY 22 to FY 23
Anchorage ¹	29,222	35,722	30,444	4%	-15%
Angoon	10	9	20	N/S	N/S
Aniak	87	71	102	17%	44%
Bethel	1,515	1,158	1,159	-23%	0%
Cordova	127	158	114	-10%	-28%
Delta Junction	311	747	565	82%	-24%
Dillingham	687	496	427	-38%	-14%
Emmonak	171	107	127	-26%	19%
Fairbanks	10,710	8,752	8,509	-21%	-3%
Fort Yukon	67	76	45	-33%	-41%
Galena	59	48	45	-24%	-6%
Glennallen	385	602	461	20%	-23%
Haines	134	100	151	13%	51%
Homer	1,376	1,525	1,964	43%	29%
Hoonah	62	41	53	-15%	29%
Hooper Bay	178	107	109	-39%	2%
Juneau	3,879	3,821	3,236	-17%	-15%
Kenai	7,337	7,116	4,891	-33%	-31%
Ketchikan	1,627	1,535	1,497	-8%	-2%
Kodiak	920	949	811	-12%	-15%
Kotzebue	398	523	499	25%	-5%
Naknek	264	315	264	0%	-16%
Nenana	2,380	2,428	1,829	-23%	-25%
Nome	1,277	861	737	-42%	-14%
Palmer	12,403	11,766	8,689	-30%	-26%
Petersburg	300	258	192	-36%	-26%
Prince of Wales	703	776	728	4%	-6%
Sand Point	56	48	54	-4%	13%
Seward	1,566	1,764	1,832	17%	4%
Sitka	853	586	589	-31%	1%
Skagway	22	24	33	50%	38%
St. Mary's ²	183	165	124	-32%	-25%
St. Paul	2	12	20	N/S	67%
Tok	590	293	334	-43%	14%
Unalakleet	107	105	150	40%	43%
Unalaska	263	219	329	25%	50%
Utqiagvik	544	663	694	28%	5%
Valdez	227	220	219	-4%	0%
Wrangell	151	142	146	-3%	3%
Yakutat	30	35	28	-7%	-20%
Total	81,183	84,343	72,220	-11%	-14%
1st District	7,771	7,327	6,673	-14%	-9%
2nd District	2,326	2,152	2,080	-11%	-3%
3rd District	54,835	60,912	50,519	-8%	-17%
4th District	16,251	13,952	12,948	-20%	-7%

N/S: Numbers 10 or less are not compared statistically.

1. The FY22 numbers also include numbers for minor citations previously unreported from the period April 30, 2021 through June 30, 2021.

2. St. Mary's court closed in 2016. Records for filings from the venue are still maintained separately.

**Figure 5.01. District Court Filing and Disposition Trends
FY 21 – FY 23**



1. The FY22 numbers also include numbers for minor citations previously unreported from the period April 30, 2021 through June 30, 2021.

**Table 5.03. District Court Clearance Rates
FY 22 – FY 23**

Court	Non-minor offense filings		Minor offense filings ¹		Total filings		Clearance rates	
	FY 23	Change from FY 22	FY 23	Change from FY 22	FY 23	Change from FY 22	FY 22	FY 23
	Anchorage¹	14,692	2%	15,178	-30%	29,870	-17%	99%
Angoon	8	N/S	1	N/S	9	N/S	N/S	N/S
Aniak	74	37%	16	-16%	90	23%	97%	113%
Bethel	917	-10%	84	-6%	1,001	-9%	105%	116%
Cordova	63	17%	62	-11%	125	1%	127%	91%
Delta Junction	94	-1%	435	-37%	529	-33%	95%	107%
Dillingham	317	-15%	104	20%	421	-9%	108%	101%
Emmonak	82	-27%	3	N/S	85	-28%	91%	149%
Fairbanks	3,740	-10%	4,918	8%	8,658	-1%	100%	98%
Fort Yukon	39	-26%	9	N/S	48	-14%	136%	94%
Galena	46	0%	1	N/S	47	-6%	96%	96%
Glennallen	99	-15%	313	-37%	412	-33%	99%	112%
Haines	67	29%	76	4%	143	14%	80%	106%
Homer	659	0%	1,290	35%	1,949	21%	94%	101%
Hoonah	31	55%	19	-14%	50	19%	98%	106%
Hooper Bay	86	-9%	0	N/S	86	-10%	111%	127%
Juneau	1,755	-1%	1,536	-18%	3,291	-10%	105%	98%
Kenai	1,718	-11%	2,729	-50%	4,447	-40%	96%	110%
Ketchikan	1,154	-3%	354	-14%	1,508	-6%	96%	99%
Kodiak	441	22%	605	1%	1,046	9%	99%	78%
Kotzebue	405	-8%	46	-2%	451	-7%	107%	111%
Naknek	140	-35%	99	6%	239	-22%	103%	110%
Nenana	85	-13%	1,541	-33%	1,626	-32%	102%	112%
Nome	635	14%	172	2%	807	11%	119%	91%
Palmer	4,247	-1%	4,192	-42%	8,439	-27%	102%	103%
Petersburg	68	-49%	109	5%	177	-25%	109%	108%
Prince of Wales	332	-4%	367	-4%	699	-4%	106%	104%
Sand Point	24	-37%	8	N/S	32	-30%	104%	169%
Seward	296	-7%	1,509	-7%	1,805	-7%	91%	101%
Sitka	291	-3%	309	20%	600	8%	105%	98%
Skagway	21	5%	13	N/S	34	31%	92%	97%
St. Mary's ²	69	-53%	4	N/S	73	-51%	111%	170%
St. Paul	9	N/S	1	N/S	10	N/S	109%	N/S
Tok	114	10%	258	46%	372	32%	104%	90%
Unalakleet	131	-4%	33	154%	164	9%	70%	91%
Unalaska	70	-20%	167	-7%	237	-11%	82%	139%
Utqiagvik	427	-18%	171	148%	598	2%	113%	116%
Valdez	127	-17%	102	11%	229	-7%	90%	96%
Wrangell	87	7%	71	20%	158	13%	101%	92%
Yakutat	17	-23%	6	N/S	23	-41%	90%	122%
Total	33,677	-3%	36,911	-26%	70,588	-16%	100%	102%
1st District	3,831	-3%	2,861	-11%	6,692	-6%	102%	100%
2nd District	1,598	-3%	422	42%	2,020	4%	110%	103%
3rd District	22,902	-1%	26,359	-31%	49,261	-20%	99%	103%
4th District	5,346	-11%	7,269	-7%	12,615	-9%	101%	103%

Clearance rate measures whether a court is keeping up with its incoming caseload. Courts aspire to clear (i.e., dispose of) at least as many cases as have been filed in a period by having a clearance rate of 100 percent or higher.

N/S: Numbers 10 or less are not compared statistically.

1. The FY22 numbers also include numbers for minor citations previously unreported from the period April 30, 2021 through June 30, 2021.

2. St. Mary's court closed in 2016. Records for filings from the venue are still maintained separately.

**Table 5.04. District Court Filings by Case Type
FY 23**

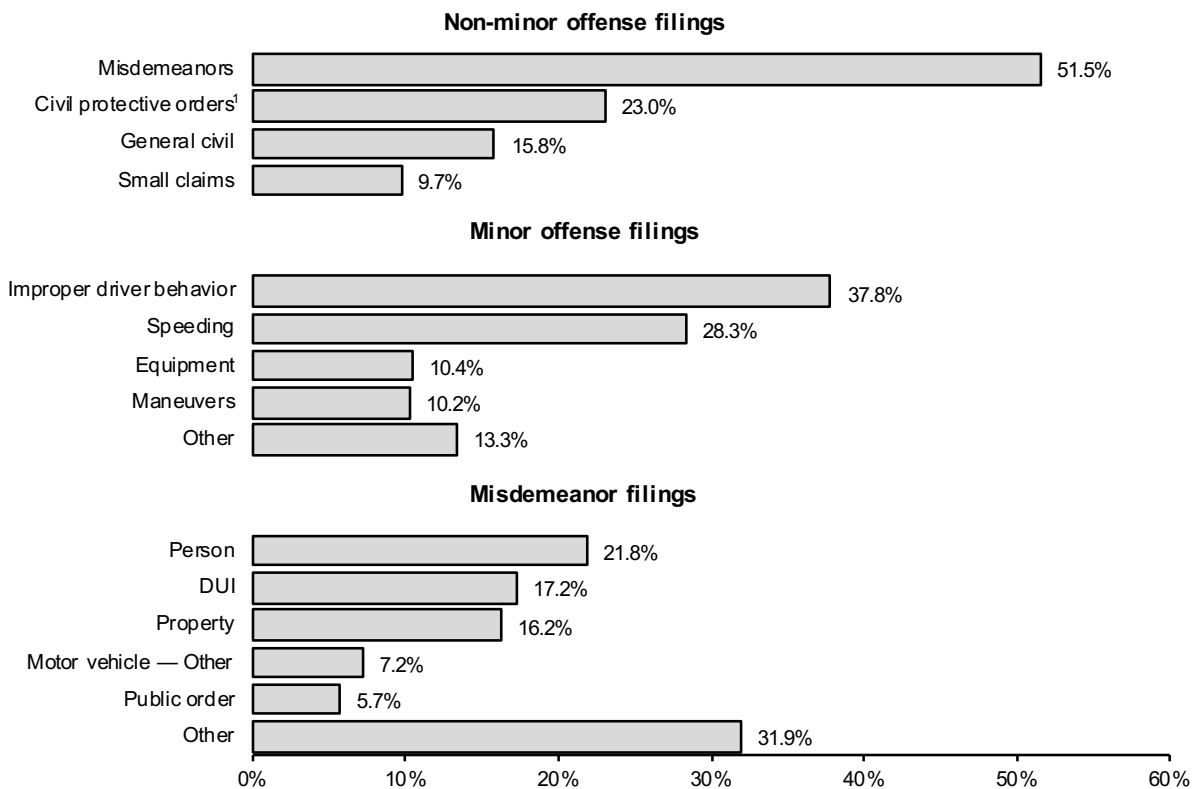
Court	Misdemeanor	Minor offense	Civil			Total
			Small claims	Civil protective orders ¹	General civil	
Anchorage	6,606	15,178	1,542	3,304	3,240	29,870
Angeon	3	1	0	4	1	9
Aniak	49	16	2	23	0	90
Bethel	530	84	24	311	52	1,001
Cordova	40	62	3	14	6	125
Delta Junction	39	435	11	41	3	529
Dillingham	213	104	9	82	13	421
Emmonak	54	3	1	27	0	85
Fairbanks	1,935	4,918	458	753	594	8,658
Fort Yukon	33	9	1	3	2	48
Galena	32	1	0	12	2	47
Glennallen	68	313	4	19	8	412
Haines	25	76	10	23	9	143
Homer	415	1,290	46	144	54	1,949
Hoonah	14	19	1	15	1	50
Hooper Bay	65	0	0	21	0	86
Juneau	1,102	1,536	141	316	196	3,291
Kenai	998	2,729	166	349	205	4,447
Ketchikan	692	354	134	221	107	1,508
Kodiak	309	605	37	63	32	1,046
Kotzebue	269	46	15	107	14	451
Naknek	112	99	1	21	6	239
Nenana	51	1,541	11	19	4	1,626
Nome	448	172	13	159	15	807
Palmer	1,919	4,192	525	1,189	614	8,439
Petersburg	39	109	8	15	6	177
Prince of Wales	213	367	8	93	18	699
Sand Point	22	8	0	1	1	32
Seward	240	1,509	11	25	20	1,805
Sitka	150	309	33	75	33	600
Skagway	15	13	3	2	1	34
St. Mary's ²	59	4	0	10	0	73
St. Paul	9	1	0	0	0	10
Tok	67	258	10	27	10	372
Unalakleet	127	33	0	4	0	164
Unalaska	53	167	3	7	7	237
Utqiagvik	199	171	16	201	11	598
Valdez	73	102	5	31	18	229
Wrangell	43	71	6	28	10	158
Yakutat	9	6	0	6	2	23
Total	17,339	36,911	3,258	7,765	5,315	70,588
% of total	24.6	52.3	4.6	11.0	7.5	100.0
1st District	2,305	2,861	344	798	384	6,692
2nd District	1,043	422	44	471	40	2,020
3rd District	11,077	26,359	2,352	5,249	4,224	49,261
4th District	2,914	7,269	518	1,247	667	12,615

1. The Civil Protective Order case group includes petitions for domestic violence, stalking, and sexual assault protective orders.

2. St. Mary's court closed in 2016. Records for filings from the venue are still maintained separately.

**Figure 5.02. Composition of District Court Case Filings
FY 23**

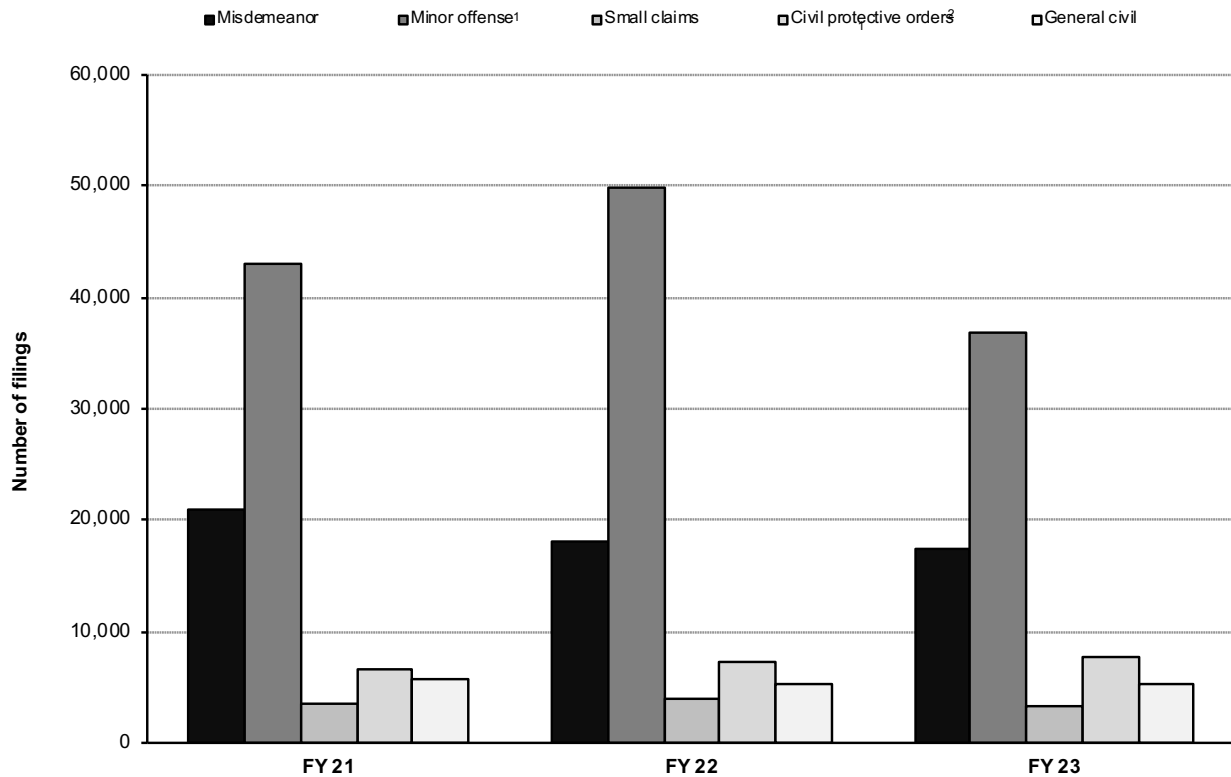
Percentages within categories.



This chart analyzes the composition of cases filed in District Court during FY23. Misdemeanor cases represent approximately 51.5% of the non-minor offense caseload. Approximately 24.7% of all misdemeanor cases involve driving while intoxicated or another criminal traffic violation (for example, driving with suspended license).

1. The Civil Protective Order case group includes petitions for domestic violence, stalking and sexual assault protective orders.

**Figure 5.03. District Court Filing Trends by Case Type
FY 21 – FY 23**



Filing Type	FY 21	FY 22	FY 23	FY 21 to FY 23 change	FY 22 to FY 23 change
Misdemeanor	20,994	18,076	17,339	-17%	-4%
Minor offense ¹	42,940	49,804	36,911	-14%	-26%
Small claims	3,422	3,896	3,258	-5%	-16%
Civil protective orders ²	6,642	7,333	7,765	17%	6%
General civil	5,620	5,366	5,315	-5%	-1%
Total	79,618	84,475	70,588	-11%	-16%

1. The FY22 numbers also include numbers for minor citations previously unreported from the period April 30, 2021 through June 30, 2021.

2. The Civil Protective Order case group includes petitions for domestic violence, stalking, and sexual assault protective orders.

**Table 5.05. District Court Dispositions by Case Type
FY 23**

Court	Misdemeanor	Minor offense	Civil			Total
			Small claims	Civil protective orders ¹	General civil	
Anchorage¹	7,037	15,189	1,736	3,316	3,166	30,444
Angoon	8	2	1	5	4	20
Aniak	61	18	3	18	2	102
Bethel	711	75	22	306	45	1,159
Cordova	26	60	3	13	12	114
Delta Junction	28	469	15	41	12	565
Dillingham	226	107	10	72	12	427
Emmonak	100	2	1	24	0	127
Fairbanks	1,791	4,602	682	741	693	8,509
Fort Yukon	33	9	0	3	0	45
Galena	29	1	1	13	1	45
Glennallen	54	380	5	16	6	461
Haines	32	80	12	20	7	151
Homer	490	1,247	35	140	52	1,964
Hoonah	12	24	1	15	1	53
Hooper Bay	85	2	2	20	0	109
Juneau	1,445	1,114	189	276	212	3,236
Kenai	1,230	2,904	214	345	198	4,891
Ketchikan	629	404	124	225	115	1,497
Kodiak	248	407	45	67	44	811
Kotzebue	334	28	18	108	11	499
Naknek	135	98	1	21	9	264
Nenana	52	1,735	13	18	11	1,829
Nome	466	108	9	147	7	737
Palmer	2,295	3,979	723	1,156	536	8,689
Petersburg	48	116	10	14	4	192
Prince of Wales	229	388	4	90	17	728
Sand Point	35	18	0	1	0	54
Seward	236	1,539	11	23	23	1,832
Sitka	156	285	43	67	38	589
Skagway	15	11	1	2	4	33
St. Mary's ²	109	4	0	11	0	124
St. Paul	17	1	0	2	0	20
Tok	50	240	12	25	7	334
Unalakleet	113	28	3	5	1	150
Unalaska	99	213	1	8	8	329
Utqiagvik	311	170	18	184	11	694
Valdez	57	90	26	27	19	219
Wrangell	46	56	6	30	8	146
Yakutat	15	4	3	6	0	28
Total	19,093	36,207	4,003	7,621	5,296	72,220
% of total	26.4	50.1	5.6	10.6	7.3	100.0
1st District	2,635	2,484	394	750	410	6,673
2nd District	1,224	334	48	444	30	2,080
3rd District	12,185	26,232	2,810	5,207	4,085	50,519
4th District	3,049	7,157	751	1,220	771	12,948

1. The Civil Protective Order case group includes petitions for domestic violence, stalking, and sexual assault protective orders.

2. St. Mary's court closed in 2016. Records for filings from the venue are still maintained separately.

**Table 5.06. District Court Non-Minor Offense Case Filings
FY 21 – FY 23**

Court	FY 21	FY 22	FY 23	Change	
				FY 21 to FY 23	FY 22 to FY 23
Anchorage	13,803	14,465	14,692	6%	2%
Angoon	9	9	8	N/S	N/S
Aniak	58	54	74	28%	37%
Bethel	1,249	1,014	917	-27%	-10%
Cordova	56	54	63	13%	17%
Delta Junction	96	95	94	-2%	-1%
Dillingham	432	374	317	-27%	-15%
Emmonak	126	113	82	-35%	-27%
Fairbanks	4,757	4,168	3,740	-21%	-10%
Fort Yukon	63	53	39	-38%	-26%
Galena	55	46	46	-16%	0%
Glennallen	152	116	99	-35%	-15%
Haines	57	52	67	18%	29%
Homer	638	661	659	3%	0%
Hoonah	34	20	31	-9%	55%
Hooper Bay	139	94	86	-38%	-9%
Juneau	2,117	1,774	1,755	-17%	-1%
Kenai	2,179	1,933	1,718	-21%	-11%
Ketchikan	1,227	1,187	1,154	-6%	-3%
Kodiak	385	362	441	15%	22%
Kotzebue	473	440	405	-14%	-8%
Naknek	226	214	140	-38%	-35%
Nenana	104	98	85	-18%	-13%
Nome	929	558	635	-32%	14%
Palmer	4,628	4,305	4,247	-8%	-1%
Petersburg	200	133	68	-66%	-49%
Prince of Wales	355	347	332	-6%	-4%
Sand Point	37	38	24	-35%	-37%
Seward	244	317	296	21%	-7%
Sitka	439	299	291	-34%	-3%
Skagway	19	20	21	11%	5%
St. Mary's ¹	191	146	69	-64%	-53%
St. Paul	14	10	9	N/S	N/S
Tok	150	104	114	-24%	10%
Unalakleet	120	137	131	9%	-4%
Unalaska	114	87	70	-39%	-20%
Utqiagvik	546	518	427	-22%	-18%
Valdez	141	153	127	-10%	-17%
Wrangell	97	81	87	-10%	7%
Yakutat	19	22	17	-11%	-23%
Total	36,678	34,671	33,677	-8%	-3%
1st District	4,573	3,944	3,831	-16%	-3%
2nd District	2,068	1,653	1,598	-23%	-3%
3rd District	23,049	23,089	22,902	-1%	-1%
4th District	6,988	5,985	5,346	-23%	-11%

N/S: Numbers 10 or less are not compared statistically.

1. St. Mary's court closed in 2016. Records for filings from the venue are still maintained separately.

**Table 5.07. District Court Non-Minor Offense Case Dispositions
FY 21 – FY 23**

Court	FY 21	FY 22	FY 23	Change	
				FY 21 to FY 23	FY 22 to FY 23
Anchorage	13,696	14,172	15,255	11%	8%
Angeon	10	9	18	N/S	N/S
Aniak	76	55	84	11%	53%
Bethel	1,371	1,067	1,084	-21%	2%
Cordova	50	78	54	8%	-31%
Delta Junction	85	102	96	13%	-6%
Dillingham	449	406	320	-29%	-21%
Emmonak	165	99	125	-24%	26%
Fairbanks	5,036	4,278	3,907	-22%	-9%
Fort Yukon	55	71	36	-35%	-49%
Galena	50	44	44	-12%	0%
Glennallen	117	147	81	-31%	-45%
Haines	71	40	71	0%	78%
Homer	597	641	717	20%	12%
Hoonah	38	25	29	-24%	16%
Hooper Bay	176	106	107	-39%	1%
Juneau	2,028	1,895	2,122	5%	12%
Kenai	2,267	1,963	1,987	-12%	1%
Ketchikan	1,165	1,191	1,093	-6%	-8%
Kodiak	420	363	404	-4%	11%
Kotzebue	344	462	471	37%	2%
Naknek	195	216	166	-15%	-23%
Nenana	124	117	94	-24%	-20%
Nome	737	698	629	-15%	-10%
Palmer	3,666	4,699	4,710	28%	0%
Petersburg	187	152	76	-59%	-50%
Prince of Wales	341	372	340	0%	-9%
Sand Point	50	42	36	-28%	-14%
Seward	297	310	293	-1%	-5%
Sitka	523	316	304	-42%	-4%
Skagway	19	18	22	16%	22%
St. Mary's ¹	182	161	120	-34%	-25%
St. Paul	2	10	19	N/S	N/S
Tok	148	114	94	-36%	-18%
Unalakleet	80	87	122	53%	40%
Unalaska	148	90	116	-22%	29%
Utqiagvik	464	603	524	13%	-13%
Valdez	111	157	129	16%	-18%
Wrangell	96	81	90	-6%	11%
Yakutat	14	17	24	71%	41%
Total	35,650	35,474	36,013	1%	2%
1st District	4,492	4,116	4,189	-7%	2%
2nd District	1,625	1,850	1,746	7%	-6%
3rd District	22,065	23,294	24,287	10%	4%
4th District	7,468	6,214	5,791	-22%	-7%

N/S: Numbers 10 or less are not compared statistically.

1. St. Mary's court closed in 2016. Records for filings from the venue are still maintained separately.

**Table 5.08. Misdemeanor Case Filings
FY 21 – FY 23**

Court	FY 21	FY 22	FY 23	Change	
				FY 21 to FY 23	FY 22 to FY 23
Anchorage	6,805	6,736	6,606	-3%	-2%
Angoon	6	4	3	N/S	N/S
Aniak	43	35	49	14%	40%
Bethel	985	669	530	-46%	-21%
Cordova	40	31	40	0%	29%
Delta Junction	32	33	39	22%	18%
Dillingham	314	243	213	-32%	-12%
Emmonak	104	76	54	-48%	-29%
Fairbanks	2,901	2,244	1,935	-33%	-14%
Fort Yukon	52	44	33	-37%	-25%
Galena	24	27	32	33%	19%
Glennallen	121	79	68	-44%	-14%
Haines	26	30	25	-4%	-17%
Homer	434	428	415	-4%	-3%
Hoonah	12	11	14	17%	27%
Hooper Bay	105	53	65	-38%	23%
Juneau	1,247	1,055	1,102	-12%	4%
Kenai	1,440	1,094	998	-31%	-9%
Ketchikan	805	706	692	-14%	-2%
Kodiak	220	194	309	40%	59%
Kotzebue	329	305	269	-18%	-12%
Naknek	182	186	112	-38%	-40%
Nenana	73	60	51	-30%	-15%
Nome	693	395	448	-35%	13%
Palmer	2,251	1,814	1,919	-15%	6%
Petersburg	124	69	39	-69%	-43%
Prince of Wales	254	260	213	-16%	-18%
Sand Point	33	25	22	-33%	-12%
Seward	193	236	240	24%	2%
Sitka	224	147	150	-33%	2%
Skagway	8	7	15	N/S	N/S
St. Mary's ¹	159	123	59	-63%	-52%
St. Paul	14	5	9	N/S	N/S
Tok	116	66	67	-42%	2%
Unalakleet	108	120	127	18%	6%
Unalaska	86	62	53	-38%	-15%
Utqiagvik	304	271	199	-35%	-27%
Valdez	78	81	73	-6%	-10%
Wrangell	42	43	43	2%	0%
Yakutat	7	9	9	N/S	N/S
Total	20,994	18,076	17,339	-17%	-4%
1st District	2,755	2,341	2,305	-16%	-2%
2nd District	1,434	1,091	1,043	-27%	-4%
3rd District	12,211	11,214	11,077	-9%	-1%
4th District	4,594	3,430	2,914	-37%	-15%

N/S: Numbers 10 or less are not compared statistically.

1. St. Mary's court closed in 2016. Records for filings from the venue are still maintained separately.

**Table 5.09. Misdemeanor Filings by Case Type
FY 23**

Court	Person	Property	Drugs	Weapon	Public		Reckless driving	Motor	Protective	Fish & Game	Other	Total
					order	DUI		vehicle — other	order violation			
Anchorage	1,370	891	89	77	457	987	5	104	7	2	2,617	6,606
Anoon	0	0	0	0	0	0	0	0	0	0	3	3
Aniak	30	6	1	0	1	2	0	0	1	2	6	49
Bethel	213	41	2	2	29	42	0	5	19	11	166	530
Cordova	10	3	2	0	2	10	0	6	2	1	4	40
Delta Junction	12	5	0	0	1	8	1	6	0	3	3	39
Dillingham	75	13	3	0	24	8	0	2	5	55	28	213
Emmonak	29	5	0	0	2	5	0	0	1	0	12	54
Fairbanks	337	425	9	18	63	380	3	118	42	2	538	1,935
Fort Yukon	9	7	0	1	1	3	0	0	0	0	12	33
Galena	14	8	0	0	2	0	0	0	2	0	6	32
Glennallen	22	4	1	0	3	20	0	2	0	5	11	68
Haines	6	4	1	0	3	5	0	2	0	0	4	25
Homer	44	41	15	3	10	128	5	129	4	0	36	415
Hoonah	6	2	0	0	1	3	0	1	0	0	1	14
Hooper Bay	47	1	0	2	5	3	0	0	3	0	4	65
Juneau	152	321	5	7	88	159	1	170	0	0	199	1,102
Kenai	172	143	47	6	31	238	5	245	25	9	77	998
Ketchikan	94	154	16	1	72	58	6	44	19	6	222	692
Kodiak	45	34	13	4	9	98	3	40	2	24	37	309
Kotzebue	133	38	0	1	32	18	1	5	2	0	39	269
Naknek	22	6	1	0	2	15	0	3	2	57	4	112
Nenana	14	8	0	0	2	15	0	2	0	1	9	51
Nome	179	97	0	0	47	35	1	5	9	0	75	448
Palmer	407	440	84	17	42	490	14	225	57	13	130	1,919
Petersburg	5	1	0	1	3	13	0	4	4	7	1	39
Prince of Wales	30	16	11	0	8	18	1	30	3	4	92	213
Sand Point	7	2	0	0	0	3	0	1	0	6	3	22
Seward	25	24	15	5	12	77	1	54	5	1	21	240
Sitka	45	15	2	1	3	46	1	13	7	13	4	150
Skagway	2	1	0	1	0	6	0	1	0	0	4	15
St. Mary's ¹	45	5	0	0	1	5	0	0	0	0	3	59
St. Paul	5	1	0	0	0	1	0	1	0	0	1	9
Tok	17	6	1	0	5	9	0	3	2	5	19	67
Unalakleet	51	4	0	0	3	18	0	1	0	0	50	127
Unalaska	19	5	0	0	6	12	1	4	0	2	4	53
Utqiagvik	61	18	0	5	14	20	1	5	6	0	69	199
Valdez	13	9	3	0	3	19	1	14	2	2	7	73
Wrangell	5	1	0	1	6	9	1	8	2	1	9	43
Yakutat	4	0	0	0	1	3	0	1	0	0	0	9
Total	3,776	2,805	321	153	994	2,989	52	1,254	233	232	4,530	17,339
% of total	21.8	16.2	1.9	0.9	5.7	17.2	0.3	7.2	1.4	1.3	26.1	100.0
1st District	349	515	35	12	185	320	10	274	35	31	539	2,305
2nd District	424	157	0	6	96	91	3	16	17	0	233	1,043
3rd District	2,236	1,616	273	112	601	2,106	35	830	111	177	2,980	11,077
4th District	767	517	13	23	112	472	4	134	70	24	778	2,914

1. St. Mary's court closed in 2016. Records for filings from the venue are still maintained separately.

**Table 5.10. Criminal Case Types
FY 23**

Person	Public Order
Homicide	Riot
Assault	Disorderly Conduct
Reckless Endangerment	Harassment
Kidnapping	Indecent Viewing or Photography
Custodial Interference	Possess or Distribute Child Pornography
Human Trafficking	Cruelty to Animals
Sex Offenses	Recruiting Gang Members
Robbery	Gambling
Extortion	Alcohol Licensing Laws
Coercion	
	Motor Vehicle DUI
Property	Motor Vehicle Reckless Driving
Theft	
Burglary	Motor Vehicle Other
Criminal Trespass	
Vehicle Theft	Protection Order Violation
Arson	
Criminal Mischief	Fish and Game
Business and Commercial Offenses	
	Other
Drugs	Offenses against Public Administration
Misconduct Involving a Controlled Substance	Offenses against Family and
Manufacture, Delivery or Possession of	Vulnerable Adults
Imitation Controlled Substance	All other offenses, including cases in which
	a charging document was never filed
Weapons	
Misconduct Involving Weapons	
Criminal Possession of Explosives	
Unlawful Furnishing of Explosives	

Criminal cases typically contain multiple charges. The Alaska Court System categorizes cases for reporting purposes based on the most serious charge. In FY07 the Alaska Court System changed the way it categorizes criminal cases for annual reporting. The categories now conform to the National Center for State Courts' national model for caseload statistical reporting. This change is intended to make Alaska statistics easier to compile, understand, and compare to those of other jurisdictions.

**Table 5.11. Misdemeanor Case Dispositions
FY 21 – FY 23**

Court	FY 21	FY 22	FY 23	Change	
				FY 21 to FY 23	FY 22 to FY 23
Anchorage	5,686	6,970	7,037	24%	1%
Angoon	8	6	8	N/S	N/S
Aniak	58	34	61	5%	79%
Bethel	1,099	742	711	-35%	-4%
Cordova	41	50	26	-37%	-48%
Delta Junction	35	38	28	-20%	-26%
Dillingham	333	267	226	-32%	-15%
Emmonak	140	62	100	-29%	61%
Fairbanks	3,197	2,466	1,791	-44%	-27%
Fort Yukon	44	61	33	-25%	-46%
Galena	22	23	29	32%	26%
Glennallen	89	107	54	-39%	-50%
Haines	40	18	32	-20%	78%
Homer	381	417	490	29%	18%
Hoonah	19	13	12	-37%	-8%
Hooper Bay	140	69	85	-39%	23%
Juneau	1,216	1,134	1,445	19%	27%
Kenai	1,456	1,168	1,230	-16%	5%
Ketchikan	777	698	629	-19%	-10%
Kodiak	263	187	248	-6%	33%
Kotzebue	200	318	334	67%	5%
Naknek	149	193	135	-9%	-30%
Nenana	95	78	52	-45%	-33%
Nome	511	529	466	-9%	-12%
Palmer	1,589	2,430	2,295	44%	-6%
Petersburg	113	85	48	-58%	-44%
Prince of Wales	260	265	229	-12%	-14%
Sand Point	47	26	35	-26%	35%
Seward	247	230	236	-4%	3%
Sitka	260	182	156	-40%	-14%
Skagway	11	4	15	36%	N/S
St. Mary's ¹	150	138	109	-27%	-21%
St. Paul	2	7	17	N/S	N/S
Tok	113	80	50	-56%	-37%
Unalakleet	72	77	113	57%	47%
Unalaska	121	64	99	-18%	55%
Utqiagvik	265	347	311	17%	-10%
Valdez	55	104	57	4%	-45%
Wrangell	51	31	46	-10%	48%
Yakutat	4	5	15	N/S	N/S
Total	19,359	19,723	19,093	-1%	-3%
1st District	2,759	2,441	2,635	-4%	8%
2nd District	1,048	1,271	1,224	17%	-4%
3rd District	10,459	12,220	12,185	17%	0%
4th District	5,093	3,791	3,049	-40%	-20%

N/S: Numbers 10 or less are not compared statistically.

1. St. Mary's court closed in 2016. Records for filings from the venue are still maintained separately.

**Table 5.12. Misdemeanor Case Dispositions by Manner of Disposition
FY 23**

	Non-trial			Trial		Total
	Case dismissed	Guilty plea	Other	Guilty	Not guilty	
Anchorage	4,037	2,979	4	14	3	7,037
Angoon	4	4	0	0	0	8
Aniak	39	21	0	1	0	61
Bethel	430	279	0	0	2	711
Cordova	12	13	1	0	0	26
Delta Junction	9	17	0	2	0	28
Dillingham	106	120	0	0	0	226
Emmonak	56	44	0	0	0	100
Fairbanks	1,119	648	3	11	10	1,791
Fort Yukon	21	12	0	0	0	33
Galena	12	16	0	1	0	29
Glennallen	23	30	0	1	0	54
Haines	16	16	0	0	0	32
Homer	210	278	0	1	1	490
Hoonah	3	9	0	0	0	12
Hooper Bay	38	47	0	0	0	85
Juneau	785	659	0	1	0	1,445
Kenai	463	752	3	8	4	1,230
Ketchikan	381	239	5	3	1	629
Kodiak	41	203	0	3	1	248
Kotzebue	134	200	0	0	0	334
Naknek	39	93	0	2	1	135
Nenana	23	28	0	1	0	52
Nome	278	187	0	1	0	466
Palmer	1,132	1,134	4	19	6	2,295
Petersburg	28	20	0	0	0	48
Prince of Wales	176	52	0	1	0	229
Sand Point	19	16	0	0	0	35
Seward	81	154	0	1	0	236
Sitka	45	106	0	5	0	156
Skagway	10	5	0	0	0	15
St. Mary's ¹	48	60	0	0	1	109
St. Paul	13	4	0	0	0	17
Tok	29	20	0	0	1	50
Unalakleet	61	52	0	0	0	113
Unalaska	64	33	0	2	0	99
Utqiagvik	235	76	0	0	0	311
Valdez	22	34	0	1	0	57
Wrangell	15	30	0	1	0	46
Yakutat	8	7	0	0	0	15
Total	10,265	8,697	20	80	31	19,093
% of total	53.8	45.5	0.1	0.4	0.2	100.0
1st District	1,471	1,147	5	11	1	2,635
2nd District	708	515	0	1	0	1,224
3rd District	6,262	5,843	12	52	16	12,185
4th District	1,824	1,192	3	16	14	3,049

1. St. Mary's court closed in 2016. Records for filings from the venue are still maintained separately.

Table 5.13. Felony Filings in District Court¹
FY 21 – FY 23

Court	FY 21	FY 22	FY 23	Change	
				FY 21 to FY 23	FY 22 to FY 23
Anchorage	2,986	3,023	2,923	-2%	-3%
Angoon	0	3	1	N/S	N/S
Aniak	27	32	38	41%	19%
Bethel	228	266	246	8%	-8%
Cordova	16	10	18	13%	N/S
Delta Junction	10	5	5	N/S	N/S
Dillingham	112	80	65	-42%	-19%
Emmonak	46	50	43	-7%	-14%
Fairbanks	640	521	437	-32%	-16%
Fort Yukon	18	14	4	N/S	N/S
Galena	8	15	11	N/S	-27%
Glennallen	20	22	20	0%	-9%
Haines	7	6	7	N/S	N/S
Homer	108	118	95	-12%	-19%
Hoonah	1	2	5	N/S	N/S
Hooper Bay	33	34	43	30%	26%
Juneau	153	133	118	-23%	-11%
Kenai	394	340	301	-24%	-11%
Ketchikan	115	109	132	15%	21%
Kodiak	72	101	100	39%	-1%
Kotzebue	179	134	136	-24%	1%
Naknek	33	46	25	-24%	-46%
Nenana	25	21	20	-20%	-5%
Nome	153	112	91	-41%	-19%
Palmer	604	593	610	1%	3%
Petersburg	16	17	6	N/S	N/S
Prince of Wales	42	29	35	-17%	21%
Sand Point	9	9	11	N/S	N/S
Seward	54	76	85	57%	12%
Sitka	30	35	46	53%	31%
Skagway	0	0	3	N/S	N/S
St. Mary's ³ 2	52	49	45	-13%	-8%
St. Paul	6	11	6	N/S	N/S
Tok	29	38	14	-52%	-63%
Unalakleet	60	46	86	43%	87%
Unalaska	12	11	14	17%	27%
Utqiagvik	61	57	31	-49%	-46%
Valdez	14	12	14	0%	17%
Wrangell	13	9	4	N/S	N/S
Yakutat	1	5	5	N/S	N/S
Total	6,387	6,194	5,899	-8%	-5%
1st District	378	348	362	-4%	4%
2nd District	453	349	344	-24%	-1%
3rd District	4,440	4,452	4,287	-3%	-4%
4th District	1,116	1,045	906	-19%	-13%

N/S: Numbers 10 or less are not compared statistically.

1. This chart is for information purposes only. The totals are not included in the District Court totals. Felony cases are reported as Superior Court cases, regardless of where the case was initiated.
2. St. Mary's court closed in 2016. Records for filings from the venue are still maintained separately.

**Table 5.14. Post-judgment Filings:
Misdemeanor Petitions to Revoke Probation
FY 21 – FY 23**

Court	FY 21	FY 22	FY 23	Change	
				FY 21 to FY 23	FY 22 to FY 23
Anchorage	541	282	585	8%	107%
Angoon	0	2	0	N/S	N/S
Aniak	0	1	1	N/S	N/S
Bethel	58	59	25	-57%	-58%
Cordova	1	5	1	N/S	N/S
Delta Junction	0	1	0	N/S	N/S
Dillingham	11	11	7	N/S	N/S
Emmonak	14	9	2	N/S	N/S
Fairbanks	159	104	29	-82%	-72%
Fort Yukon	1	1	2	N/S	N/S
Galena	0	0	0	N/S	N/S
Glennallen	4	3	2	N/S	N/S
Haines	0	0	0	N/S	N/S
Homer	19	33	29	53%	-12%
Hoonah	0	0	0	N/S	N/S
Hooper Bay	6	1	5	N/S	N/S
Juneau	142	139	140	-1%	1%
Kenai	102	99	91	-11%	-8%
Ketchikan	50	31	43	-14%	39%
Kodiak	23	20	10	N/S	N/S
Kotzebue	13	37	52	300%	41%
Naknek	1	3	3	N/S	N/S
Nenana	2	1	1	N/S	N/S
Nome	21	44	116	452%	164%
Palmer	78	39	55	-29%	41%
Petersburg	6	3	0	N/S	N/S
Prince of Wales	3	7	9	N/S	N/S
Sand Point	0	0	5	N/S	N/S
Seward	12	18	18	50%	0%
Sitka	8	8	16	N/S	N/S
Skagway	0	0	0	N/S	N/S
St. Mary's ¹	8	8	11	N/S	N/S
St. Paul	1	0	1	N/S	N/S
Tok	2	4	1	N/S	N/S
Unalakleet	0	1	2	N/S	N/S
Unalaska	0	0	6	N/S	N/S
Utqiagvik	7	11	7	N/S	N/S
Valdez	2	0	2	N/S	N/S
Wrangell	4	2	2	N/S	N/S
Yakutat	1	0	0	N/S	N/S
Total	1,300	987	1,279	-2%	30%
1st District	214	192	210	-2%	9%
2nd District	41	93	177	332%	90%
3rd District	795	513	815	3%	59%
4th District	250	189	77	-69%	-59%

N/S: Numbers 10 or less are not compared statistically.

1. St. Mary's court closed in 2016. Records for filings from the venue are still maintained separately.

**Table 5.15. Small Claims Case Filings
FY 21 – FY 23**

Court	FY 21	FY 22	FY 23	Change	
				FY 21 to FY 23	FY 22 to FY 23
Anchorage	1,341	1,571	1,542	15%	-2%
Angoon	0	0	0	N/S	N/S
Aniak	3	0	2	N/S	N/S
Bethel	13	13	24	85%	85%
Cordova	2	2	3	N/S	N/S
Delta Junction	9	8	11	N/S	N/S
Dillingham	5	9	9	N/S	N/S
Emmonak	4	2	1	N/S	N/S
Fairbanks	410	580	458	12%	-21%
Fort Yukon	3	4	1	N/S	N/S
Galena	2	2	0	N/S	N/S
Glennallen	7	6	4	N/S	N/S
Haines	3	5	10	N/S	N/S
Homer	26	45	46	77%	2%
Hoonah	2	0	1	N/S	N/S
Hooper Bay	0	2	0	N/S	N/S
Juneau	300	150	141	-53%	-6%
Kenai	121	197	166	37%	-16%
Ketchikan	123	160	134	9%	-16%
Kodiak	16	30	37	131%	23%
Kotzebue	12	11	15	25%	36%
Naknek	3	0	1	N/S	N/S
Nenana	5	10	11	N/S	N/S
Nome	13	10	13	0%	N/S
Palmer	843	912	525	-38%	-42%
Petersburg	2	14	8	N/S	N/S
Prince of Wales	3	5	8	N/S	N/S
Sand Point	0	0	0	N/S	N/S
Seward	12	11	11	-8%	0%
Sitka	79	50	33	-58%	-34%
Skagway	1	3	3	N/S	N/S
St. Mary's ¹	1	0	0	N/S	N/S
St. Paul	0	0	0	N/S	N/S
Tok	3	12	10	N/S	N/S
Unalakleet	0	4	0	N/S	N/S
Unalaska	1	2	3	N/S	N/S
Utqiagvik	9	15	16	N/S	7%
Valdez	13	34	5	N/S	N/S
Wrangell	26	9	6	N/S	N/S
Yakutat	6	8	0	N/S	N/S
Total	3,422	3,896	3,258	-5%	-16%
1st District	545	404	344	-37%	-15%
2nd District	34	40	44	29%	10%
3rd District	2,390	2,819	2,352	-2%	-17%
4th District	453	633	518	14%	-18%

N/S: Numbers 10 or less are not compared statistically.

1. St. Mary's court closed in 2016. Records for filings from the venue are still maintained separately.

**Table 5.16. Small Claims Case Dispositions
FY 21 – FY 23**

Court	FY 21	FY 22	FY 23	Change	
				FY 21 to FY 23	FY 22 to FY 23
Anchorage	2,006	1,342	1,736	-13%	29%
Angoon	0	0	1	N/S	N/S
Aniak	6	1	3	N/S	N/S
Bethel	27	12	22	-19%	83%
Cordova	1	3	3	N/S	N/S
Delta Junction	5	7	15	N/S	N/S
Dillingham	7	6	10	N/S	N/S
Emmonak	4	3	1	N/S	N/S
Fairbanks	423	480	682	61%	42%
Fort Yukon	3	3	0	N/S	N/S
Galena	1	2	1	N/S	N/S
Glennallen	9	8	5	N/S	N/S
Haines	4	3	12	N/S	N/S
Homer	33	40	35	6%	-12%
Hoonah	2	0	1	N/S	N/S
Hooper Bay	0	0	2	N/S	N/S
Juneau	263	157	189	-28%	20%
Kenai	158	166	214	35%	29%
Ketchikan	100	173	124	24%	-28%
Kodiak	21	21	45	114%	114%
Kotzebue	18	9	18	0%	N/S
Naknek	2	1	1	N/S	N/S
Nenana	5	8	13	N/S	N/S
Nome	25	11	9	N/S	N/S
Palmer	736	488	723	-2%	48%
Petersburg	4	11	10	N/S	N/S
Prince of Wales	5	4	4	N/S	N/S
Sand Point	0	0	0	N/S	N/S
Seward	13	12	11	-15%	-8%
Sitka	123	52	43	-65%	-17%
Skagway	1	3	1	N/S	N/S
St. Mary's ¹	0	1	0	N/S	N/S
St. Paul	0	0	0	N/S	N/S
Tok	3	8	12	N/S	N/S
Unalakleet	0	0	3	N/S	N/S
Unalaska	3	3	1	N/S	N/S
Utqiagvik	18	10	18	0%	N/S
Valdez	14	17	26	86%	53%
Wrangell	13	20	6	N/S	N/S
Yakutat	6	6	3	N/S	N/S
Total	4,062	3,091	4,003	-1%	30%
1st District	521	429	394	-24%	-8%
2nd District	61	30	48	-21%	60%
3rd District	3,003	2,107	2,810	-6%	33%
4th District	477	525	751	57%	43%

N/S: Numbers 10 or less are not compared statistically.

1. St. Mary's court closed in 2016. Records for filings from the venue are still maintained separately.

**Table 5.17. Small Claims Case Dispositions by Manner of Disposition
FY 23**

Court	Stage of disposition					Total
	Dismiss	Default judgment	Judgment on the pleadings	Trial	Other	
Anchorage	1,015	546	58	66	51	1,736
Angoon	0	1	0	0	0	1
Aniak	2	1	0	0	0	3
Bethel	12	7	3	0	0	22
Cordova	0	1	1	1	0	3
Delta Junction	9	3	0	2	1	15
Dillingham	6	2	1	1	0	10
Emmonak	0	1	0	0	0	1
Fairbanks	381	253	20	16	12	682
Fort Yukon	0	0	0	0	0	0
Galena	1	0	0	0	0	1
Glennallen	4	1	0	0	0	5
Haines	7	3	1	1	0	12
Homer	15	14	5	0	1	35
Hoonah	1	0	0	0	0	1
Hooper Bay	2	0	0	0	0	2
Juneau	90	84	9	4	2	189
Kenai	119	69	7	13	6	214
Ketchikan	58	61	1	4	0	124
Kodiak	20	15	2	4	4	45
Kotzebue	6	10	1	0	1	18
Naknek	0	0	0	1	0	1
Nenana	6	4	2	1	0	13
Nome	4	3	1	0	1	9
Palmer	231	418	22	43	9	723
Petersburg	3	1	4	0	2	10
Prince of Wales	3	0	1	0	0	4
Sand Point	0	0	0	0	0	0
Seward	6	5	0	0	0	11
Sitka	15	23	4	1	0	43
Skagway	1	0	0	0	0	1
St. Mary's ¹	0	0	0	0	0	0
St. Paul	0	0	0	0	0	0
Tok	9	1	0	1	1	12
Unalakleet	0	3	0	0	0	3
Unalaska	0	1	0	0	0	1
Utqiagvik	11	6	0	0	1	18
Valdez	20	3	1	2	0	26
Wrangell	3	1	0	2	0	6
Yakutat	2	1	0	0	0	3
Total	2,062	1,542	144	163	92	4,003
% of total	51.5	38.5	3.6	4.1	2.3	100.0
1st District	183	175	20	12	4	394
2nd District	21	22	2	0	3	48
3rd District	1,436	1,075	97	131	71	2,810
4th District	422	270	25	20	14	751

1. St. Mary's court closed in 2016. Records for filings from the venue are still maintained separately.

**Table 5.18. Civil Protective Order¹ Case Filings
FY 21 – FY 23**

Court	FY 21	FY 22	FY 23	Change	
				FY 21 to FY 23	FY 22 to FY 23
Anchorage	2,667	3,148	3,304	24%	5%
Angoon	3	3	4	N/S	N/S
Aniak	11	16	23	109%	44%
Bethel	208	291	311	50%	7%
Cordova	1	12	14	N/S	17%
Delta Junction	38	34	41	8%	21%
Dillingham	99	108	82	-17%	-24%
Emmonak	16	34	27	69%	-21%
Fairbanks	652	666	753	15%	13%
Fort Yukon	7	5	3	N/S	N/S
Galena	24	17	12	-50%	-29%
Glennallen	14	24	19	36%	-21%
Haines	14	10	23	64%	N/S
Homer	102	128	144	41%	13%
Hoonah	18	7	15	-17%	N/S
Hooper Bay	34	39	21	-38%	-46%
Juneau	376	329	316	-16%	-4%
Kenai	358	368	349	-3%	-5%
Ketchikan	180	210	221	23%	5%
Kodiak	81	87	63	-22%	-28%
Kotzebue	106	101	107	1%	6%
Naknek	38	15	21	-45%	40%
Nenana	9	17	19	N/S	12%
Nome	194	143	159	-18%	11%
Palmer	805	963	1,189	48%	23%
Petersburg	54	35	15	-72%	-57%
Prince of Wales	80	68	93	16%	37%
Sand Point	1	11	1	N/S	N/S
Seward	21	38	25	19%	-34%
Sitka	87	55	75	-14%	36%
Skagway	7	7	2	N/S	N/S
St. Mary's ²	31	23	10	N/S	N/S
St. Paul	0	5	0	N/S	N/S
Tok	25	23	27	8%	17%
Unalakleet	11	13	4	N/S	N/S
Unalaska	10	15	7	N/S	N/S
Utqiagvik	207	218	201	-3%	-8%
Valdez	30	22	31	3%	41%
Wrangell	20	22	28	40%	27%
Yakutat	3	3	6	N/S	N/S
Total	6,642	7,333	7,765	17%	6%
1st District	842	749	798	-5%	7%
2nd District	518	475	471	-9%	-1%
3rd District	4,227	4,944	5,249	24%	6%
4th District	1,055	1,165	1,247	18%	7%

N/S: Numbers 10 or less are not compared statistically.

1. The Civil Protective Order case group includes petitions for domestic violence, stalking, and sexual assault protective orders.
2. St. Mary's court closed in 2016. Records for filings from the venue are still maintained separately.

**Table 5.19. Civil Protective Order¹ Case Dispositions
FY 21 – FY 23**

Court	FY 21	FY 22	FY 23	Change	
				FY 21 to FY 23	FY 22 to FY 23
Anchorage	2,661	3,069	3,316	25%	8%
Angoon	2	3	5	N/S	N/S
Aniak	11	18	18	64%	0%
Bethel	194	270	306	58%	13%
Cordova	0	12	13	N/S	8%
Delta Junction	32	40	41	28%	3%
Dillingham	97	114	72	-26%	-37%
Emmonak	21	32	24	14%	-25%
Fairbanks	652	639	741	14%	16%
Fort Yukon	6	6	3	N/S	N/S
Galena	25	16	13	-48%	-19%
Glennallen	12	20	16	33%	-20%
Haines	14	10	20	43%	N/S
Homer	111	119	140	26%	18%
Hoonah	16	10	15	-6%	N/S
Hooper Bay	36	37	20	-44%	-46%
Juneau	363	335	276	-24%	-18%
Kenai	338	361	345	2%	-4%
Ketchikan	179	194	225	26%	16%
Kodiak	81	81	67	-17%	-17%
Kotzebue	104	103	108	4%	5%
Naknek	39	16	21	-46%	31%
Nenana	9	18	18	N/S	0%
Nome	174	143	147	-16%	3%
Palmer	791	927	1,156	46%	25%
Petersburg	51	37	14	-73%	-62%
Prince of Wales	64	84	90	41%	7%
Sand Point	1	12	1	N/S	N/S
Seward	22	39	23	5%	-41%
Sitka	85	47	67	-21%	43%
Skagway	6	8	2	N/S	N/S
St. Mary's ²	32	22	11	-66%	-50%
St. Paul	0	3	2	N/S	N/S
Tok	26	23	25	-4%	9%
Unalakleet	8	10	5	N/S	N/S
Unalaska	7	11	8	N/S	N/S
Utqiagvik	158	224	184	16%	-18%
Valdez	26	20	27	4%	35%
Wrangell	22	20	30	36%	50%
Yakutat	3	3	6	N/S	N/S
Total	6,479	7,156	7,621	18%	6%
1st District	805	751	750	-7%	0%
2nd District	444	480	444	0%	-7%
3rd District	4,186	4,804	5,207	24%	8%
4th District	1,044	1,121	1,220	17%	9%

N/S: Numbers 10 or less are not compared statistically.

1. The Civil Protective Order case group includes petitions for domestic violence, stalking, and sexual assault protective orders.
2. St. Mary's court closed in 2016. Records for filings from the venue are still maintained separately.

**Table 5.20. District Court General Civil Case Filings
FY 21 – FY 23**

Court	FY 21	FY 22	FY 23	Change	
				FY 21 to FY 23	FY 22 to FY 23
Anchorage	2,990	3,010	3,240	8%	8%
Angoon	0	2	1	N/S	N/S
Aniak	1	3	0	N/S	N/S
Bethel	43	41	52	21%	27%
Cordova	13	9	6	N/S	N/S
Delta Junction	17	20	3	N/S	N/S
Dillingham	14	14	13	-7%	-7%
Emmonak	2	1	0	N/S	N/S
Fairbanks	794	678	594	-25%	-12%
Fort Yukon	1	0	2	N/S	N/S
Galena	5	0	2	N/S	N/S
Glennallen	10	7	8	N/S	N/S
Haines	14	7	9	N/S	N/S
Homer	76	60	54	-29%	-10%
Hoonah	2	2	1	N/S	N/S
Hooper Bay	0	0	0	N/S	N/S
Juneau	194	240	196	1%	-18%
Kenai	260	274	205	-21%	-25%
Ketchikan	119	111	107	-10%	-4%
Kodiak	68	51	32	-53%	-37%
Kotzebue	26	23	14	-46%	-39%
Naknek	3	13	6	N/S	N/S
Nenana	17	11	4	N/S	N/S
Nome	29	10	15	-48%	N/S
Palmer	729	616	614	-16%	0%
Petersburg	20	15	6	N/S	N/S
Prince of Wales	18	14	18	0%	29%
Sand Point	3	2	1	N/S	N/S
Seward	18	32	20	11%	-37%
Sitka	49	47	33	-33%	-30%
Skagway	3	3	1	N/S	N/S
St. Mary's ¹	0	0	0	N/S	N/S
St. Paul	0	0	0	N/S	N/S
Tok	6	3	10	N/S	N/S
Unalakleet	1	0	0	N/S	N/S
Unalaska	17	8	7	N/S	N/S
Utqiagvik	26	14	11	-58%	-21%
Valdez	20	16	18	-10%	13%
Wrangell	9	7	10	N/S	N/S
Yakutat	3	2	2	N/S	N/S
Total	5,620	5,366	5,315	-5%	-1%
1st District	431	450	384	-11%	-15%
2nd District	82	47	40	-51%	-15%
3rd District	4,221	4,112	4,224	0%	3%
4th District	886	757	667	-25%	-12%

N/S: Numbers 10 or less are not compared statistically.

1. St. Mary's court closed in 2016. Records for filings from the venue are still maintained separately.

**Table 5.21. District Court General Civil Filings by Case Type
FY 23**

Court	Eviction/ real property	Debt/ contract	Post- conviction relief	Other	Total
Anchorage	1,713	1,184	1	342	3,240
Angoon	0	1	0	0	1
Aniak	0	0	0	0	0
Bethel	23	24	0	5	52
Cordova	3	2	0	1	6
Delta Junction	0	3	0	0	3
Dillingham	6	5	0	2	13
Emmonak	0	0	0	0	0
Fairbanks	216	258	1	119	594
Fort Yukon	0	2	0	0	2
Galena	0	2	0	0	2
Glennallen	4	4	0	0	8
Haines	4	5	0	0	9
Homer	19	32	1	2	54
Hoonah	0	1	0	0	1
Hooper Bay	0	0	0	0	0
Juneau	91	93	0	12	196
Kenai	47	135	1	22	205
Ketchikan	59	40	0	8	107
Kodiak	11	16	0	5	32
Kotzebue	4	9	0	1	14
Naknek	0	6	0	0	6
Nenana	0	4	0	0	4
Nome	4	10	0	1	15
Palmer	123	418	1	72	614
Petersburg	2	3	0	1	6
Prince of Wales	8	10	0	0	18
Sand Point	0	1	0	0	1
Seward	9	11	0	0	20
Sitka	17	15	0	1	33
Skagway	0	1	0	0	1
St. Mary's ¹	0	0	0	0	0
St. Paul	0	0	0	0	0
Tok	4	4	0	2	10
Unalakleet	0	0	0	0	0
Unalaska	1	5	0	1	7
Utqiagvik	3	8	0	0	11
Valdez	5	10	0	3	18
Wrangell	6	4	0	0	10
Yakutat	1	1	0	0	2
Total	2,383	2,327	5	600	5,315
% of total	44.8	43.8	0.1	11.3	100.0
1st District	188	174	0	22	384
2nd District	11	27	0	2	40
3rd District	1,941	1,829	4	450	4,224
4th District	243	297	1	126	667

1. St. Mary's court closed in 2016. Records for filings from the venue are still maintained separately.

**Table 5.22. District Court General Civil Case Dispositions
FY 21 – FY 23**

Court	FY 21	FY 22	FY 23	Change	
				FY 21 to FY 23	FY 22 to FY 23
Anchorage	3,343	2,791	3,166	-5%	13%
Angeon	0	0	4	N/S	N/S
Aniak	1	2	2	N/S	N/S
Bethel	51	43	45	-12%	5%
Cordova	8	13	12	N/S	-8%
Delta Junction	13	17	12	-8%	-29%
Dillingham	12	19	12	0%	-37%
Emmonak	0	2	0	N/S	N/S
Fairbanks	764	693	693	-9%	0%
Fort Yukon	2	1	0	N/S	N/S
Galena	2	3	1	N/S	N/S
Glennallen	7	12	6	N/S	N/S
Haines	13	9	7	N/S	N/S
Homer	72	65	52	-28%	-20%
Hoonah	1	2	1	N/S	N/S
Hooper Bay	0	0	0	N/S	N/S
Juneau	186	269	212	14%	-21%
Kenai	315	268	198	-37%	-26%
Ketchikan	109	126	115	6%	-9%
Kodiak	55	74	44	-20%	-41%
Kotzebue	22	32	11	-50%	-66%
Naknek	5	6	9	N/S	N/S
Nenana	15	13	11	-27%	-15%
Nome	27	15	7	N/S	N/S
Palmer	550	854	536	-3%	-37%
Petersburg	19	19	4	N/S	N/S
Prince of Wales	12	19	17	42%	-11%
Sand Point	2	4	0	N/S	N/S
Seward	15	29	23	53%	-21%
Sitka	55	35	38	-31%	9%
Skagway	1	3	4	N/S	N/S
St. Mary's ¹	0	0	0	N/S	N/S
St. Paul	0	0	0	N/S	N/S
Tok	6	3	7	N/S	N/S
Unalakleet	0	0	1	N/S	N/S
Unalaska	17	12	8	N/S	N/S
Utqiagvik	23	22	11	-52%	-50%
Valdez	16	16	19	19%	19%
Wrangell	10	10	8	N/S	N/S
Yakutat	1	3	0	N/S	N/S
Total	5,750	5,504	5,296	-8%	-4%
1st District	407	495	410	1%	-17%
2nd District	72	69	30	-58%	-57%
3rd District	4,417	4,163	4,085	-8%	-2%
4th District	854	777	771	-10%	-1%

N/S: Numbers 10 or less are not compared statistically.

1. St. Mary's court closed in 2016. Records for filings from the venue are still maintained separately.

**Table 5.23. District Court General Civil Case Dispositions
by Manner of Disposition
FY 23**

Court	Stage of disposition						Total
	Dismiss/ settle	Default judgment	Summary judgment	Court trial	Jury trial	Other	
Anchorage	2,278	568	220	6	2	92	3,166
Angeon	3	1	0	0	0	0	4
Aniak	1	1	0	0	0	0	2
Bethel	24	3	15	0	1	2	45
Cordova	4	1	6	0	0	1	12
Delta Junction	7	2	3	0	0	0	12
Dillingham	9	1	2	0	0	0	12
Emmonak	0	0	0	0	0	0	0
Fairbanks	499	134	38	3	0	19	693
Fort Yukon	0	0	0	0	0	0	0
Galena	1	0	0	0	0	0	1
Glennallen	1	3	1	0	0	1	6
Haines	4	1	1	0	0	1	7
Homer	33	7	12	0	0	0	52
Hoonah	1	0	0	0	0	0	1
Hooper Bay	0	0	0	0	0	0	0
Juneau	146	47	11	0	0	8	212
Kenai	107	49	32	2	0	8	198
Ketchikan	62	18	31	0	0	4	115
Kodiak	29	7	6	1	0	1	44
Kotzebue	7	0	3	0	0	1	11
Naknek	5	1	3	0	0	0	9
Nenana	6	4	1	0	0	0	11
Nome	3	2	2	0	0	0	7
Palmer	246	169	71	6	3	41	536
Petersburg	3	0	1	0	0	0	4
Prince of Wales	9	1	3	2	0	2	17
Sand Point	0	0	0	0	0	0	0
Seward	11	5	7	0	0	0	23
Sitka	25	6	4	2	0	1	38
Skagway	2	1	1	0	0	0	4
St. Mary's ¹	0	0	0	0	0	0	0
St. Paul	0	0	0	0	0	0	0
Tok	5	0	1	0	0	1	7
Unalakleet	0	1	0	0	0	0	1
Unalaska	4	4	0	0	0	0	8
Utqiagvik	8	2	1	0	0	0	11
Valdez	8	1	9	0	0	1	19
Wrangell	2	1	5	0	0	0	8
Yakutat	0	0	0	0	0	0	0
Total	3,553	1,041	490	22	6	184	5,296
% of total	67.1	19.7	9.2	0.4	0.1	3.5	100.0
1st District	257	76	57	4	0	16	410
2nd District	18	5	6	0	0	1	30
3rd District	2,735	816	369	15	5	145	4,085
4th District	543	144	58	3	1	22	771

1. St. Mary's court closed in 2016. Records for filings from the venue are still maintained separately.

**Table 5.24. Minor Offense Case Dispositions
FY 21 – FY 23**

Court	FY 21	FY 22	FY 23	Change	
				FY 21 to FY 23	FY 22 to FY 23
Anchorage ¹	15,526	21,550	15,189	-2%	-30%
Angoon	0	0	2	N/S	N/S
Aniak	11	16	18	64%	13%
Bethel	144	91	75	-48%	-18%
Cordova	77	80	60	-22%	-25%
Delta Junction	226	645	469	108%	-27%
Dillingham	238	90	107	-55%	19%
Emmonak	6	8	2	N/S	N/S
Fairbanks	5,674	4,474	4,602	-19%	3%
Fort Yukon	12	5	9	N/S	N/S
Galena	9	4	1	N/S	N/S
Glennallen	268	455	380	42%	-16%
Haines	63	60	80	27%	33%
Homer	779	884	1,247	60%	41%
Hoonah	24	16	24	0%	50%
Hooper Bay	2	1	2	N/S	N/S
Juneau	1,851	1,926	1,114	-40%	-42%
Kenai	5,070	5,153	2,904	-43%	-44%
Ketchikan	462	344	404	-13%	17%
Kodiak	500	586	407	-19%	-31%
Kotzebue	54	61	28	-48%	-54%
Naknek	69	99	98	42%	-1%
Nenana	2,256	2,311	1,735	-23%	-25%
Nome	540	163	108	-80%	-34%
Palmer	8,737	7,067	3,979	-54%	-44%
Petersburg	113	106	116	3%	9%
Prince of Wales	362	404	388	7%	-4%
Sand Point	6	6	18	N/S	N/S
Seward	1,269	1,454	1,539	21%	6%
Sitka	330	270	285	-14%	6%
Skagway	3	6	11	N/S	N/S
St. Mary's ²	1	4	4	N/S	N/S
St. Paul	0	2	1	N/S	N/S
Tok	442	179	240	-46%	34%
Unalakleet	27	18	28	4%	56%
Unalaska	115	129	213	85%	65%
Utqiagvik	80	60	170	113%	183%
Valdez	116	63	90	-22%	43%
Wrangell	55	61	56	2%	-8%
Yakutat	16	18	4	N/S	N/S
Total	45,533	48,869	36,207	-20%	-26%
1st District	3,279	3,211	2,484	-24%	-23%
2nd District	701	302	334	-52%	11%
3rd District	32,770	37,618	26,232	-20%	-30%
4th District	8,783	7,738	7,157	-19%	-8%

N/S: Numbers 10 or less are not compared statistically.

1. The FY22 numbers also include numbers for minor citations previously unreported from the period April 30, 2021 through June 30, 2021.

2. St. Mary's court closed in 2016. Records for filings from the venue are still maintained separately.

**Table 5.25. Minor Offense Case Dispositions by Case Type
FY 23**

Court	Equipment	Speeding	Improper driver behavior	Maneuvers	Alcohol/ drugs	Fish & Game	Other	Total
Anchorage	1,531	3,681	6,744	2,205	212	42	774	15,189
Angoon	0	2	0	0	0	0	0	2
Aniak	0	0	0	0	0	16	2	18
Bethel	1	1	15	7	0	20	31	75
Cordova	1	0	9	2	2	39	7	60
Delta Junction	56	230	128	20	0	28	7	469
Dillingham	1	2	10	5	0	23	66	107
Emmonak	0	2	0	0	0	0	0	2
Fairbanks	710	1,411	1,568	515	28	38	332	4,602
Fort Yukon	0	1	0	0	0	8	0	9
Galena	0	0	0	0	0	0	1	1
Glennallen	4	240	84	5	1	27	19	380
Haines	9	14	31	3	4	9	10	80
Homer	161	451	427	56	14	66	72	1,247
Hoonah	1	0	3	0	0	19	1	24
Hooper Bay	0	0	0	1	0	0	1	2
Juneau	43	203	583	84	0	44	157	1,114
Kenai	316	998	734	196	10	396	254	2,904
Ketchikan	19	26	156	10	0	39	154	404
Kodiak	39	48	167	38	3	59	53	407
Kotzebue	0	1	3	2	0	6	16	28
Naknek	10	18	34	2	1	27	6	98
Nenana	74	1,383	200	48	4	17	9	1,735
Nome	7	5	29	12	0	9	46	108
Palmer	283	1,028	1,244	312	24	122	966	3,979
Petersburg	6	16	41	5	1	34	13	116
Prince of Wales	13	175	104	7	3	45	41	388
Sand Point	0	0	1	1	0	10	6	18
Seward	373	521	459	62	4	79	41	1,539
Sitka	5	19	77	9	1	105	69	285
Skagway	2	0	0	1	0	5	3	11
St. Mary's ¹	0	0	1	0	0	3	0	4
St. Paul	0	0	0	1	0	0	0	1
Tok	52	91	52	11	3	11	20	240
Unalakleet	11	0	2	0	0	7	8	28
Unalaska	124	12	42	9	0	8	18	213
Utqiagvik	5	30	11	23	0	12	89	170
Valdez	1	13	19	3	0	6	48	90
Wrangell	2	2	12	0	0	27	13	56
Yakutat	0	0	1	0	0	3	0	4
Total	3,860	10,624	12,991	3,655	315	1,409	3,353	36,207
% of total	10.7	29.3	35.9	10.1	0.9	3.9	9.2	100.0
1st District	100	457	1,008	119	9	330	461	2,484
2nd District	23	36	45	37	0	34	159	334
3rd District	2,844	7,012	9,974	2,897	271	904	2,330	26,232
4th District	893	3,119	1,964	602	35	141	403	7,157

1. St. Mary's court closed in 2016. Records for filings from the venue are still maintained separately.

**Table 5.26. Minor Offense Case Types
FY 23**

<p>Equipment Equipment / Vehicles - Registrations, Defects and Misuse</p>	<p>Alcohol and Drug Controlled Substance Violations</p>
<p>Speeding</p>	<p>Fish and Game</p>
<p>Improper Driver Behavior Duties Failed — Requirements Not Met</p>	<p>Other Offenses Tickets with zero points added to record</p>
<p>Maneuvers — Illegal or Improper Failure to Obey Following Improperly Improper Lane or Location Passing Reckless, Careless or Negligent Driving Failure to Yield Failure to Signal Improper Turns Wrong Way or Side Miscellaneous Maneuvers</p>	<p>Littering Duty Failure Curfew Dog Tickets Tobacco Boat Safety</p>

In FY07 the Alaska Court System changed the way it categorizes minor offenses for annual reporting. The traffic categories now conform to the American Association of Motor Vehicle Administrators (AAMVA) Code Dictionary. This change is intended to make Alaska statistics easier to compile, understand, and compare to those of other jurisdictions.



Tundra rock with orange lichen, Utukok River (Second Judicial District)

Cover photograph: Ice fog along the Tanana River, 23 Nov 2012. Photo by Frostnip. (Used in accordance with Creative Commons Attribution-NonCommercial 2.0 Generic (CC BY-NC 2.0 Deed) license.)

Photos used with permission

The following photos are used without charge, including photos chosen from Creative Commons-licensed photos at Flickr (www.flickr.com). Creative Commons licensing information can be found at <http://creativecommons.org/licenses/>

Photo by FairbanksMike (fairbanksmike on Flickr): page 5, Smokehouse full of salmon strips, Fairbanks, 17 Jul 2010. (Used in accordance with Creative Commons Attribution 2.0 Generic (CC BY 2.0 Deed) license.)

Photos by Melissa S. Green: page 23, River beauty (dwarf fireweed), Copper River, 16 Jun 2014; page 24, Bull moose, Chugach Mountains, 22 Jul 2014. (Used by permission.)



Willow ptarmigan, Nome (Second Judicial District)

Photo by Douglas Greenberg (dagberg on Flickr): page 87, Willow ptarmigan, Nome, 5 Jun 2023. (Used in accordance with Creative Commons Attribution-NonCommercial 2.0 Generic (CC BY-NC 2.0 Deed) license.)

Photos by Kim Mincer, Bureau of Land Management (blmalaska on Flickr): page 18, Siberian phlox, Utukok River, 26 Jun 2017; page 86, Tundra rock with orange lichen, Utukok River, 18 Jun 2017. (Public domain.)

Photos by Neil Nesheim: page v, Johns Hopkins Glacier, Glacier Bay National Park and Preserve, 3 Aug 2019; page 4, Fishing fleet, Petersburg, 7 Aug 2019; page 6, Steller sea lion, Saginaw Channel, 23 Sep 2023; page 17, Mother and baby humpback whales, North Pass, 14 Jul 2023; page 55, Beach Lake, Birchwood, 16 Sep 2023; page 56, Forget-me-nots, Douglas Island, 7 Jul 2023. (Used by permission.)

Photo by Travis (baggis on Flickr): page ii, Starfish, Hooper Bay, 11 Sep 2009. (Used in accordance with Creative Commons Attribution-NonCommercial 2.0 Generic (CC BY-NC 2.0 Deed) license.)

Photos by Bob Wick, Bureau of Land Management (mypubliclands on Flickr): page 1, Pothole lakes, National Petroleum Reserve-Alaska, North Slope, 26 Jun 2014; page 16, Delta Wild and Scenic River Watershed, 19 Jun 2014. (Public domain.)

Photo by Roy W. Wood, National Park Service (alaskanps on Flickr): page vi, Caribou, Bering Land Bridge National Preserve, 21 Aug 2009. (Used in accordance with Creative Commons Attribution 2.0 Generic (CC BY 2.0 Deed) license.)



Office of the Administrative Director
Alaska Court System
303 K Street
Anchorage, Alaska 99501
(907) 264-0548