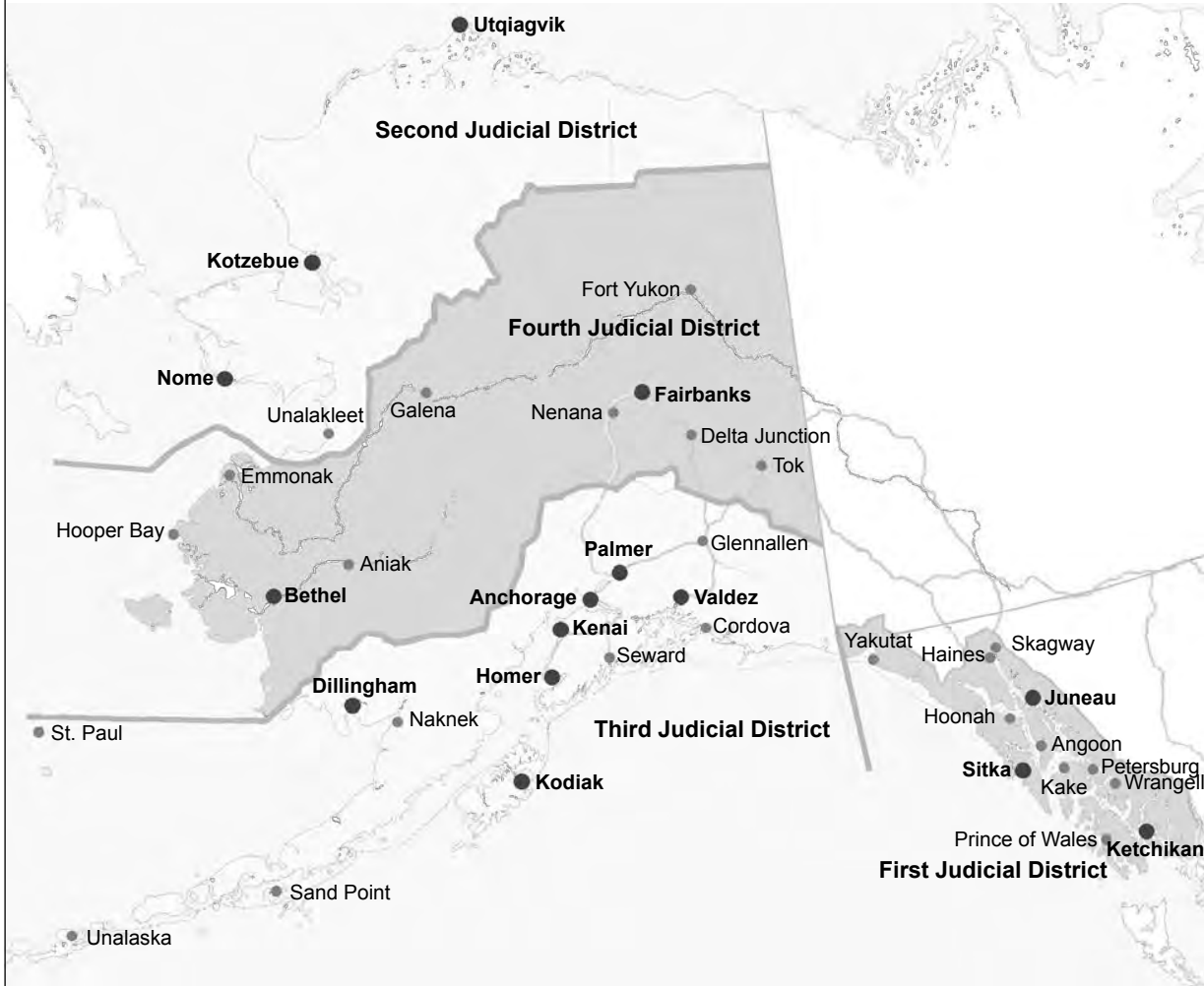


*Alaska Court System
Statistical Report FY 2022*

July 1, 2021 – June 30, 2022



Alaska Court Locations, FY 2022



Alaska Court System Statistical Report FY 2022

July 1, 2021 – June 30, 2022



© Copyright 2023 by the Alaska Court System.

Layout and compositing by Melissa S. Green, Field of Words, Anchorage, AK.

A bookmarked PDF version of this statistical report is available on the Alaska Court System website at <http://www.courts.alaska.gov/admin/index.htm#annualrep>.



Mushrooms, Gates of the Arctic National Park and Preserve (Fourth Judicial District)

Contents

<i>Alaska Court Locations, FY 2022 (map)</i>	<i>inside front cover</i>
<i>Budgetary Overview</i>	1
Figure A. Alaska Court System Budget within State of Alaska FY22 Operating Budget.....	2
Figure B. Alaska Court System Budget in Total Justice-Related Operating Budget, FY22	3
<i>Appellate Courts</i>	5
Supreme Court Activity	7
Filings.....	7
Dispositions.....	7
Pending Caseload	7
Time Required for Disposition of Cases.....	7
Court of Appeals Activity	7
Filings.....	7
Dispositions.....	8
Pending Caseload.....	8
Note for Researchers	8
Alaska Supreme Court	9
Table 1.01. Alaska Supreme Court — Case Filings & Dispositions, FY 2018–2022.....	9
Table 1.02. Alaska Supreme Court — Motions and Petitions for Rehearing, FY 2018–2022	9
Table 1.03. Alaska Supreme Court — Caseload Summary, FY 2022	9
Table 1.04. Alaska Supreme Court — Dispositions by Manner of Disposition, FY 2022	10
Table 1.05. Alaska Supreme Court — Status of Cases Pending End of Year, FY 2022	10
Table 1.06. Alaska Supreme Court — Time to Disposition, FY 2022.....	11
Alaska Court of Appeals	13
Table 2.01. Alaska Court of Appeals — Case Filings & Dispositions, FY 2018–2022	13
Table 2.02. Alaska Court of Appeals — Motions and Petitions for Rehearing, FY 2018–2022.....	13
Table 2.03. Alaska Court of Appeals — Caseload Summary, FY 2022	13
Table 2.04. Alaska Court of Appeals — Dispositions by Manner of Disposition, FY 2022	14
Table 2.05. Alaska Court of Appeals — Status of Cases Pending End of Year, FY 2022.....	14
Table 2.06. Alaska Court of Appeals — Time to Disposition, FY 2022	15
<i>Statewide Trial Courts</i>	17
Trial Court Activity	19
Filings.....	19
Dispositions.....	19
Explanatory Notes.....	19
Felony Filings.....	19
Criminal Case Categorization	19
Reopened Cases	19
Civil Protective Order Cases	20
Note for Researchers	20

Statewide Trial Courts	21
Table 3.01. Total Statewide Trial Court Case Filings FY22	21
Table 3.02. Population Trends by Court Site FY22	21
Superior Court Activity	23
Table 4.01. Total Superior Court Case Filings FY20–FY22	25
Table 4.02. Total Superior Court Case Dispositions FY20–FY22	26
Figure 4.01. Superior Court Filing and Disposition Trends FY20–FY22	27
Table 4.03. Superior Court Clearance Rates FY21–FY22	28
Table 4.04. Superior Court Filings by Case Type FY22	29
Figure 4.02. Composition of Superior Court Filings FY22	30
Figure 4.03. Superior Court Filing Trends by Case Type FY20–FY22	31
Table 4.05. Superior Court Dispositions by Case Type FY22	32
Table 4.06. Felony Case Filings FY20–FY22	33
Table 4.07. Felony Filings by Case Type FY22	34
Table 4.08. Criminal Case Types FY22	35
Table 4.09. Felony Case Dispositions FY20–FY22	36
Table 4.10. Felony Case Dispositions by Manner of Disposition FY22	37
Table 4.11. Post-judgment Filings: Felony Petitions to Revoke Probation FY20–FY22	38
Table 4.12. Probate Case Filings FY20–FY22	39
Table 4.13. Probate Filings by Case Type FY22	40
Table 4.14. Probate Case Dispositions FY20–FY22	41
Table 4.15. Domestic Relations Case Filings FY20–FY22	42
Table 4.16. Domestic Relations Filings by Case Type FY22	43
Table 4.17. Domestic Relations Case Dispositions FY20–FY22	44
Table 4.18. Domestic Relations Case Dispositions by Manner of Disposition FY22	45
Table 4.19. Post-judgment Filings: Motions to Modify Custody, Support or Visitation FY20–FY22	46
Table 4.20. Superior Court General Civil Case Filings FY20–FY22	47
Table 4.21. Superior Court General Civil Filings by Case Type FY22	48
Table 4.22. Superior Court General Civil Case Types FY22	49
Table 4.23. Superior Court General Civil Case Dispositions FY20–FY22	50
Table 4.24. Superior Court General Civil Case Dispositions by Manner of Disposition FY22	51
Table 4.25. CINA Case Filings FY20–FY22	52
Table 4.26. Delinquency Case Filings FY20–FY22	53
Table 4.27. CINA and Delinquency Filings by Case Type FY22	54
District Court Activity	55
Table 5.01. Total District Court Case Filings FY20–FY22	57
Table 5.02. Total District Court Case Dispositions FY20–FY22	57
Figure 5.01. District Court Filing and Disposition Trends FY20–FY22	59
Table 5.03. District Court Clearance Rates FY21–FY22	60
Table 5.04. District Court Filings by Case Type FY22	61
Figure 5.02. Composition of District Court Case Filings FY22	62
Figure 5.03. District Court Filing Trends by Case Type FY20–FY22	63
Table 5.05. District Court Dispositions by Case Type FY22	64
Table 5.06. District Court Non-Minor Offense Case Filings FY20–FY22	65
Table 5.07. District Court Non-Minor Offense Case Dispositions FY20–FY22	66

Table 5.08. Misdemeanor Case Filings FY20–FY22	67
Table 5.09. Misdemeanor Filings by Case Type FY22	68
Table 5.10. Criminal Case Types FY22	69
Table 5.11. Misdemeanor Case Dispositions FY20–FY22	70
Table 5.12. Misdemeanor Case Dispositions by Manner of Disposition FY22	71
Table 5.13. Felony Filings in District Court FY20–FY22	72
Table 5.14. Post-judgment Filings: Misdemeanor Petitions to Revoke Probation FY20–FY22	73
Table 5.15. Small Claims Case Filings FY20–FY22	74
Table 5.16. Small Claims Case Dispositions FY20–FY22	75
Table 5.17. Small Claims Case Dispositions by Manner of Disposition FY22	76
Table 5.18. Civil Protective Order Case Filings FY20–FY22	77
Table 5.19. Civil Protective Order Case Dispositions FY20–FY22	78
Table 5.20. District Court General Civil Case Filings FY20–FY22	79
Table 5.21. District Court General Civil Filings by Case Type FY22	80
Table 5.22. District Court General Civil Case Dispositions FY20–FY22	81
Table 5.23. District Court General Civil Case Dispositions by Manner of Disposition FY22	82
Table 5.24. Minor Offense Case Dispositions FY20–FY22	83
Table 5.25. Minor Offense Case Dispositions by Case Type FY22	84
Table 5.26. Minor Offense Case Types FY22	85
Photo Permissions	inside back cover



Polar bears near Kaktovik (Second Judicial District)



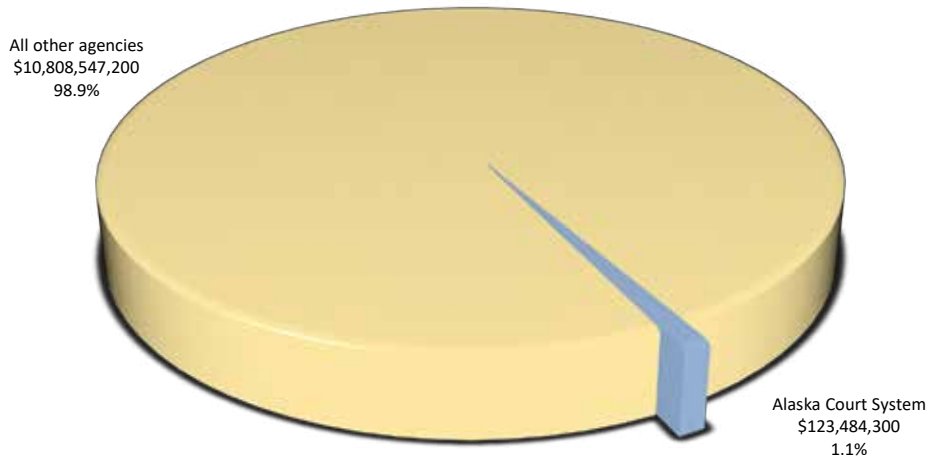
Old boat, Kotzebue (Second Judicial District)

Budgetary Overview



Evening light on the Great Kobuk Sand Dunes (Second Judicial District)

Figure A. Alaska Court System Budget within State of Alaska FY22 Operating Budget



FY22 State of Alaska Operating Budget by Agency

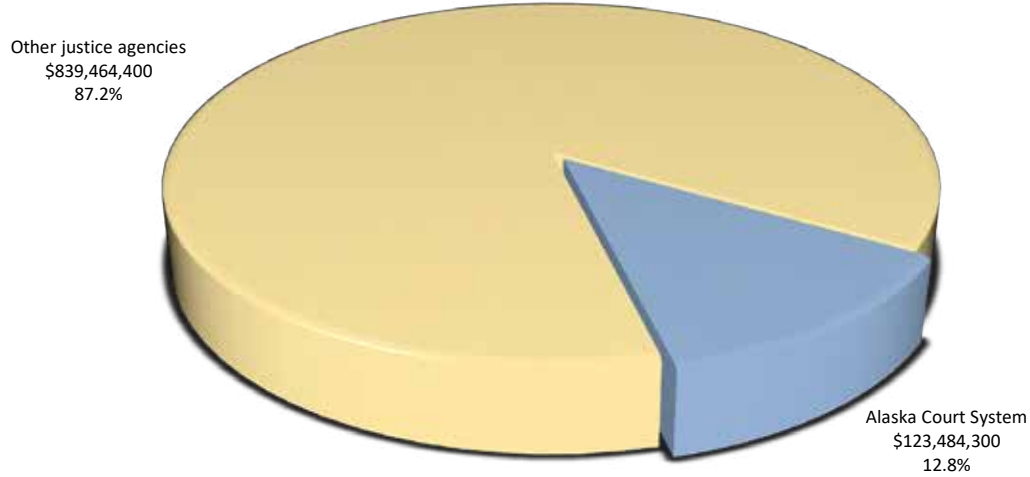
Agency	Amount	Percentage of budget
Alaska Court System*	\$123,484,300	1.1 %
Alaska Legislature	\$72,766,000	0.7
Department of Administration	\$303,813,200	2.8
Department of Commerce, Community and Economic Development	\$402,588,000	3.7
Department of Corrections	\$413,621,600	3.8
Department of Education and Early Development	\$2,014,206,800	18.4
Department of Environmental Conservation	\$83,941,100	0.8
Department of Family and Community Services	\$424,727,500	3.9
Department of Fish and Game	\$230,865,300	2.1
Department of Health	\$3,528,892,700	32.3
Department of Labor and Workforce Development	\$155,911,700	1.4
Department of Law	\$99,253,500	0.9
Department of Military and Veteran Affairs	\$59,469,200	0.5
Department of Natural Resources	\$204,675,100	1.9
Department of Public Safety	\$263,045,000	2.4
Department of Revenue	\$821,234,800	7.5
Department of Transportation and Public Facilities	\$784,996,000	7.2
Office of the Governor	\$41,501,900	0.4
University of Alaska	\$903,037,800	8.3
Executive Branch-wide appropriations	\$0	0.0
Total	\$10,932,031,500	100.0 %

* Alaska Court System budget figure includes Alaska Judicial Council and Alaska Commission on Judicial Conduct.

Source of data: Alaska Legislative Finance Division — Operating Budget: Agency Summary, 2022 Legislature (4 Oct 2022)

<http://legfin.akleg.gov/BudgetReports/LY2022/Operating/Enacted/AgencySummary.pdf>

Figure B. Alaska Court System Budget in Total Justice-Related Operating Budget, FY22



FY22 Alaska Justice Agencies Operating Budgets

Agency	Amount	Percentage of budget
Alaska Court System*	\$123,484,300	12.8 %
Department of Corrections	\$413,621,600	43.0
Department of Law	\$99,253,500	10.3
Department of Public Safety	\$263,045,000	27.3
Public Defender Agency	\$31,496,900	3.3
Office of Public Advocacy	\$32,047,400	3.3
Total	\$962,948,700	100.0 %

* Alaska Court System budget figure includes Alaska Judicial Council and Alaska Commission on Judicial Conduct.

Source of data: Alaska Legislative Finance Division — Operating Budget: Agency Summary, 2022 Legislature (4 Oct 2022)

<http://legfin.akleg.gov/BudgetReports/LY2022/Operating/Enacted/AgencySummary.pdf>

<http://legfin.akleg.gov/BudgetReports/LY2022/Operating/Enacted/DOA-AllocationSummary.pdf>



Snow on lichen, Gates of the Arctic National Park and Preserve (Fourth Judicial District)



*Appellate
Courts*

Sitka boat harbor (First Judicial District)



Bonaparte's gulls in flight, Lynn Canal (First Judicial District)

Appellate Courts

Supreme Court Activity

Filings

During FY 2022, 336 cases were filed in the Supreme Court, a 12 percent increase from the total filed in FY 2021. The number of civil appeals filed was up 12 percent from the previous year; petitions for hearing increased 28 percent; and petitions for review decreased by 9 percent. The category that includes bar matters, federal certification matters, and original applications increased 18 percent from the previous year. For details about filings in various categories of cases from FY 2018 through FY 2022, see page 9.

Dispositions

The Supreme Court disposed of 307 cases in FY 2022, a 2 percent decrease from FY 2021. The court issued 66 full opinions, 70 MO&Js, and 2 published orders. For details about dispositions by case type in FY 2022, see page 10. For comparisons of dispositions by case type from FY 2018 through FY 2022, see page 9.

Pending Caseload

On June 30, 2022, 288 cases were pending, a 6 percent increase from the end of FY 2021. Of these pending cases, 58 percent were at a stage prior to submission to the court (filing pending, awaiting settlement conference, awaiting record or transcripts, awaiting briefs, awaiting argument or conference, or awaiting response to a petition). Six percent were stayed or were awaiting rehearing or record return prior to closing; and the remaining 36 percent were under advisement (submitted to the court but awaiting circulation of a draft opinion, publication of an opinion, or decision on a petition). For a comparison of cases pending at year's end according to case type, from FY 2018 through FY 2022, see page 9. For the status of cases pending at the end of FY 2022 according to case type, see page 10.

Time Required for Disposition of Cases

In 50 percent of appeals decided by opinion or MO&J, the time from submission (usually the date of oral argument or conference on the briefs) to publication of a decision was 6.3 months or less. With petitions, bar matters, and original applications, 50 percent were completed (from opening to closing) in 1.7 months or less. Additional information about time to disposition can be found at page 11.

Court of Appeals Activity

Filings

During FY 2022, 158 cases were filed in the Court of Appeals, a 6 percent decrease from the total filed in FY 2021. Merit appeal filings decreased by 19 percent from the previous year, while sentence appeal filings increased 25 percent. Petition for review and petition for hearing filings increased by 31 percent, and original application and bail appeal filings decreased by 25 percent from FY 2021. For a comparison of filings in various case categories from FY 2018 through FY 2022, see page 13.

Dispositions

The Court of Appeals disposed of 262 cases in FY 2022. This was a 4 percent increase from FY 2021. The court issued 22 full opinions and 139 memorandum opinions and summary dispositions. For details about the types and caseload composition of dispositions in FY 2022, see page 13. For comparisons of dispositions by case type from FY 2018 through FY 2022, see page 13.

Pending Caseload

On June 30, 2022, 392 cases were pending before the Court of Appeals. Of these, 65 percent were at a stage prior to submission to the court (filing pending, awaiting record, awaiting briefing, awaiting oral argument, or awaiting response to a petition). Seven percent were awaiting rehearing or record return prior to closing, 2 percent were stayed or remanded, and the remaining 26 percent were under advisement (submitted to the court but awaiting circulation of a draft opinion, publication of an opinion, or a decision on a petition). For a comparison of cases pending at year's end according to case type, from FY 2018 through FY 2022, see page 13. For the status of cases pending at the end of FY 2022 according to case type, see page 14.

Time Required for Disposition of Cases

In 50 percent of appeals decided by opinion or MO&J, the time from submission (usually the date of oral argument or conference on the briefs) to publication of a decision was 1.9 months or less. With petitions and original applications, 50 percent were completed (from opening to closing) in 1.0 month or less. Additional information about time to disposition can be found at page 15.

Note for Researchers

Readers and researchers should be aware that occasional changes in the manner in which cases are reported or recorded by the Alaska Court System may account for some changes over time in case filing totals for specific courts or jurisdictions. While the court system attempts to make the data tables in the annual report as consistent as possible from year to year, care is necessary, especially when discerning trends or making comparisons between time periods.

Alaska Supreme Court

**Table 1.01. Alaska Supreme Court — Case Filings & Dispositions,
FY 2018–2022**

	FY18	FY19	FY20	FY21	FY22
Filings					
Civil appeals	193	166	197	171	192
Petitions for hearing	109	114	70	61	78
Petitions for review	61	54	27	58	53
Bar/original applications	19	19	14	11	13
Total	382	353	308	301	336
Dispositions					
Civil appeals	180	238	188	186	169
Petitions for hearing	114	109	88	67	66
Petitions for review	61	62	24	50	57
Bar/original applications	16	22	18	11	15
Total	371	431	318	314	307
Published					
Full opinions	72	126	83	77	66
Memorandum opinions	43	45	48	60	70
Published orders	6	3	5	3	2
Total	121	174	136	140	138
Pending end-of-year					
Civil appeals	304	231	241	227	245

**Table 1.02. Alaska Supreme Court — Motions and Petitions for Rehearing,
FY 2018–2022**

	FY18	FY19	FY20	FY21	FY22
Filings					
Petitions for rehearing	24	34	27	30	24
Full court motions	67	68	58	62	48
Individual justice motions	986	930	880	799	886
Routine (clerk) motions	390	473	490	503	468
Total	1,467	1,505	1,455	1,394	1,426
Dispositions					
Petitions for rehearing	23	34	27	29	23
Full court motions	61	74	59	65	50
Individual justice motions	950	884	928	804	890
Routine (clerk) motions	348	466	487	509	458
Total	1,382	1,458	1,501	1,407	1,421
Pending end-of-year					
Petitions for rehearing	1	2	2	1	2
Full court motions	12	4	3	2	1
Individual justice motions	58	82	43	29	19
Routine (clerk) motions	47	21	13	9	18
Total	118	109	61	41	40

Table 1.03. Alaska Supreme Court — Caseload Summary, FY 2022

	Civil appeals	Petitions for hearing	Petitions for review	Bar/original applications	Total
Pending beginning of year	227	14	24	7	272
Filings	192	78	53	13	336
Dispositions	169	66	57	15	307
Pending end of year	245	25	17	1	288

Table 1.04. Alaska Supreme Court — Dispositions by Manner of Disposition, FY 2022

	Civil appeals	Petitions for hearing	Petitions for review	Bar/ original application/ federal certified questions	Total all cases
Dispositions by published opinions					
Affirmed	33	0	2	1	36
Reversed or vacated	18	1	7	0	26
Affirmed in part/reversed in part	2	0	0	0	2
Other (dismissed, etc.)	2	0	0	2	4
Total	55	1	9	3	68
Summary dispositions on merits (memorandum opinions & summary orders)					
Affirmed	58	0	0	0	58
Reversed or vacated	7	0	0	0	7
Affirmed in part/Reversed in part	3	0	0	0	3
Other (dismissed, etc.)	1	0	0	5	6
Total	69	0	0	5	74
Petitions/applications granted		0	5	7	12
Total dispositions on merits	124	1	9	8	142
Petition denials/orders not on merits	4	60	38	5	107
Dismissals					
Stipulated to or by Appellant	26	3	3	2	34
On Motion of Appellee	1	0	0	0	1
<i>Sua Sponte</i> *	14	2	7	0	23
Total dispositions not on merits	45	65	48	7	165
Total dispositions	169	66	57	15	307

* *Sua Sponte* means orders issued by the court without motion by a party.

Table 1.05. Alaska Supreme Court — Status of Cases Pending End of Year, FY 2022

	Civil appeals	Petitions for hearing	Petitions for review	Bar/ original application/ federal certified questions	Total all cases
Filing pending	3	0	1	0	4
Awaiting settlement conference	0	0	0	0	0
Awaiting records/transcript	34	1	0	0	35
Awaiting briefs	85	3	0	0	88
Awaiting argument/conference	25	0	3	0	28
Awaiting draft opinion	55	0	0	0	55
Draft opinion circulating	31	1	3	1	36
Awaiting petition response	0	12	0	0	12
Awaiting petition decision	0	7	5	0	12
Awaiting rehearing/record return	7	1	4	0	12
Stayed or remanded	5	0	1	0	6
Total	245	25	17	1	288

Table 1.06. Alaska Supreme Court — Time to Disposition, FY 2022

Appeals decided by opinion or memorandum opinion & judgment (MO&J)*				Petitions, bar matters, original applications***			
	Percentile	Days	Months		Percentile	Days	Months
Pre-submission to Court				File open — file closed			
Notice of appeal to record certification	50%	34	1.1	50%	50	1.7	
	75%	41	1.4	75%	71	2.4	
	90%	48	1.6	90%	99	3.3	
Record certification to last brief	50%	169	5.6	*** This includes all petitions, bar matters, and original applications closed during the FY, whether by regular order or dismissal, except those that were granted and thereafter went through the full briefing process, ending in an opinion.			
	75%	244	8.1				
	90%	309	10.3				
Last brief to submission**	50%	78	2.6				
	75%	99	3.3				
	90%	148	4.9				
Subtotal: Number of days/month before submission to the court	50%	292	9.7				
	75%	386	12.9				
	90%	477	15.9				
Submission to publication							
Submission to circulation of draft opinion or recommendation	50%	134	4.5				
	75%	176	5.9				
	90%	188	6.3				
Circulation of draft opinion or recommendation to publication	50%	50	1.7				
	75%	49	1.6				
	90%	127	4.2				
Subtotal: Number of days/months from submission to publication	50%	189	6.3				
	75%	246	8.2				
	90%	303	10.1				
Post-publication motions							
Publication to closing	50%	17	0.6				
	75%	21	0.7				
	90%	37	1.2				
Total time from open to close							
	50%	493	16.4				
	75%	640	21.3				
	90%	752	25.1				

* This includes appeals closed during the FY that resulted in a published opinion or memorandum opinion & judgment; appeals that ended by dismissal or other closure are not included.

** "Submission" is usually the date of oral argument or conference on the case, but can be later in circumstances such as reassignment to a different chambers, or reconference by the court.

Alaska Court of Appeals

Table 2.01. Alaska Court of Appeals — Case Filings & Dispositions, FY 2018–2022

	FY18	FY19	FY20	FY21	FY22
Filings					
Merit appeals	233	182	177	109	88
Sentence appeals	26	23	15	12	15
Petitions	33	36	25	35	46
Original applications/bail appeals	7	15	11	12	9
Total	299	256	228	168	158
Dispositions					
Merit appeals	235	256	236	189	190
Sentence appeals	31	39	28	27	18
Petitions	36	38	25	26	43
Original applications/bail appeals	8	11	13	11	11
Total	310	344	302	253	262
Published					
Full opinions	47	42	19	37	22
Memorandum opinions*	161	208	165	139	139
Published orders	0	0	2	0	0
Total	208	250	186	176	161
Pending end-of-year					
Merit appeals	640	572	513	441	340
Sentence appeals	69	56	43	26	26
Petitions	12	7	12	20	23
Original applications/bail appeals	2	2	4	4	3
Total	723	637	572	491	392

*This number includes summary dispositions, which the court started issuing in March 2019.

Table 2.02. Alaska Court of Appeals — Motions and Petitions for Rehearing, FY 2018–2022

	FY18	FY19	FY20	FY21	FY22
Filings					
Petitions for rehearing	20	9	7	16	28
Full court motions	114	121	149	160	173
Individual judge motions	184	490	497	447	451
Routine (clerk) motions	1,295	867	664	640	572
Total	1,613	1,487	1,317	1,263	1,224
Dispositions					
Petitions for rehearing	27	9	11	14	25
Full court motions	116	124	144	162	175
Individual judge motions	260	493	515	484	450
Routine (clerk) motions	1,322	869	695	651	577
Total	1,725	1,495	1,365	1,311	1,227
Pending end-of-year					
Petitions for rehearing	5	3	0	1	4
Full court motions	10	6	11	9	9
Individual judge motions	10	31	45	18	5
Routine (clerk) motions	56	43	26	14	12
Total	81	83	82	42	30

Table 2.03. Alaska Court of Appeals — Caseload Summary, FY 2022

	Merit appeals	Sentence appeals	Petitions	Bail appeals/ original applications	Total
Pending beginning of year	441	26	20	4	491
Filings	88	15	46	9	158
Dispositions	190	18	43	11	262
Pending end of year	340	26	23	3	392

Table 2.04. Alaska Court of Appeals — Dispositions by Manner of Disposition, FY 2022

	Merit appeals	Sentence appeals	Petitions	Bail appeals/ original applications	Total
Dispositions by published opinions					
Affirmed	10	0	0	0	10
Reversed or vacated	7	0	1	0	8
Affirmed in part/reversed in part	1	1	0	0	2
Other (dismissed, etc.)	2	0	0	0	2
Total	20	1	1	0	22
Summary dispositions on merits (memorandum opinions, summary dispositions, and final unpublished orders on the merits)					
Affirmed	111	8	0	0	119
Reversed or vacated	11	0	0	0	11
Affirmed in part/Reversed in part	5	1	0	0	6
Other (dismissed, etc.)	3	0	0	0	3
Total	130	9	0	0	139
Petitions/applications granted			6	0	6
Total dispositions on merits	150	10	1	0	161
Petition denials/orders not on merits	0	0	30	4	34
Dismissals					
Stipulated to or by appellant	30	5	7	3	45
On motion of appellee	0	0	0	0	0
<i>Sua Sponte</i> *	10	3	5	4	22
Total dispositions not on merits	40	8	42	11	101
Total dispositions	190	18	43	11	262

* *Sua Sponte* means orders issued by the court without motion by a party.

Table 2.05. Alaska Court of Appeals — Status of Cases Pending End of Year, FY 2022

	Merit appeals	Sentence appeals	Petitions	Bail appeals/ original applications	Total
Filing pending	8	0	0	0	8
Awaiting records/transcript	37	4	0	0	41
Briefing stage	142	13	1	0	156
Awaiting argument/conference	34	4	7	0	45
Awaiting draft opinion	36	2	5	1	44
Draft opinion circulating	49	2	4	1	56
Awaiting petition response	0	0	2	1	3
Awaiting petition decision	0	0	3	0	3
Awaiting rehearing/record return	26	1	0	0	27
Stayed or remanded	8	0	1	0	9
Total	340	26	23	3	392

Table 2.06. Alaska Court of Appeals — Time to Disposition, FY 2022

Appeals decided by opinion or memorandum opinion & judgment (MO&J)*				Petitions and original applications***			
	Percentile	Days	Months		Percentile	Days	Months
Pre-submission to Court				File open — file closed			
Notice of appeal to record certification	50%	36	1.2	50%	30	1.0	
	75%	45	1.5	75%	48	1.6	
	90%	170	5.7	90%	254	8.5	
Record certification to last brief	50%	716	23.9	*** This includes all petitions and original applications closed during the FY, whether by regular order or dismissal, except those that were granted and thereafter went through the full briefing process, ending in an opinion.			
	75%	785	26.2				
	90%	878	29.3				
Last brief to submission**	50%	169	5.6				
	75%	271	9.0				
	90%	423	14.1				
Subtotal: Number of days/month before submission to the court	50%	953	31.8				
	75%	1,116	37.2				
	90%	1,353	45.1				
Submission to publication							
Submission to circulation of draft opinion or recommendation	50%	12	0.4				
	75%	68	2.3				
	90%	190	6.3				
Circulation of draft opinion or recommendation to publication	50%	30	1.0				
	75%	58	1.9				
	90%	146	4.9				
Subtotal: Number of days/months from submission to publication	50%	57	1.9				
	75%	160	5.3				
	90%	316	10.5				
Post-publication motions							
Publication to closing	50%	35	1.2				
	75%	41	1.4				
	90%	69	2.3				
Total time from open to close							
	50%	1,083	36.1				
	75%	1,355	45.2				
	90%	1,728	57.6				

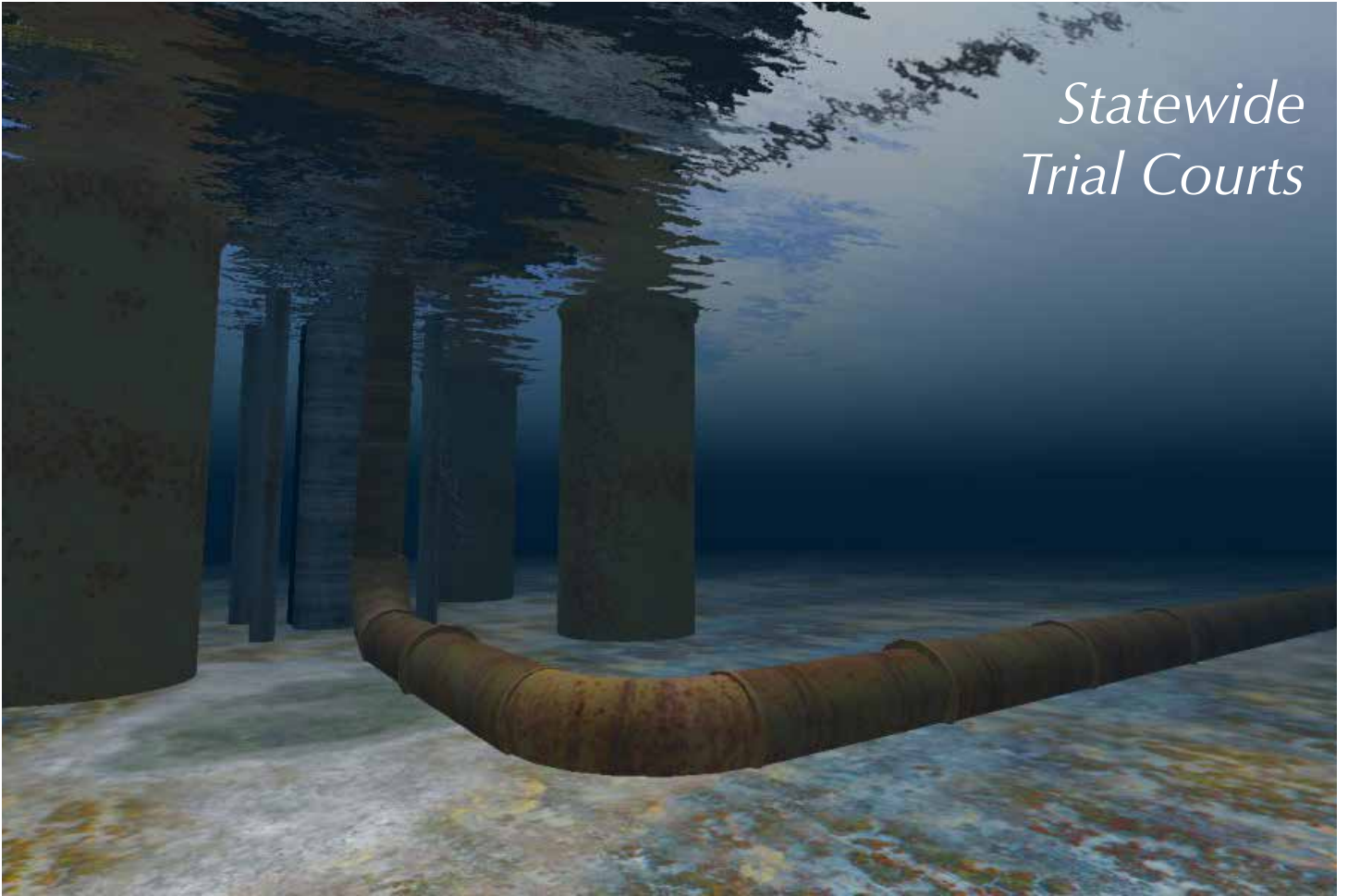
* This includes appeals closed during the FY that resulted in a published opinion or memorandum opinion & judgment; appeals that ended by dismissal or other closure are not included.

** "Submission" is usually the date of oral argument or conference on the case, but can be later in circumstances such as reassignment to a different chambers, or reconference by the court.



Turnagain Arm and Kenai Mountains from Chugach foothills, Anchorage (Third Judicial District)

*Statewide
Trial Courts*



Oil rig, Arctic National Wildlife Refuge (Second Judicial District)



Steller's jay feather, Hoonah (First Judicial District)

Statewide Trial Courts

Trial Court Activity

Filings

During FY22, 106,690 cases were filed in the trial courts, an increase of 4.8 percent from 101,768 filings in FY21.

The FY22 Superior Court filings were 22,215, an increase of 0.3 percent from 22,150 filings in FY21. CINA filings decreased by 11.7 percent, domestic relations filings decreased by 5.6 percent, and felony filings decreased by 1.7 percent. Delinquency filings increased by 27.1 percent, probate filings increased by 8.0 percent, and general civil filings increased by 2.9 percent.

The FY22 District Court filings were 84,475, an increase of 6.1 percent from 79,618 filings in FY21. Minor offense filings increased 16.0 percent, small claims filings increased 13.9 percent, and civil protective order filings increased 10.4 percent. Misdemeanor filings decreased 13.9 percent, and general civil filings decreased 4.5 percent.

Dispositions

The trial courts disposed of 104,701 cases in FY22, an increase of 3.2 percent from the 101,420 dispositions reported in FY21. To avoid a backlog of cases awaiting disposition, courts aspire to have a clearance rate of 100 percent or higher, meaning that they have cleared (i.e., disposed of) at least as many cases as were filed during the period. The clearance rate for trial court cases was 98.1 percent in FY22.

Explanatory Notes

Felony Filings

Most felony cases are initiated in District Court and then transferred to Superior Court after indictment by a grand jury or the filing of an information. Since most of the activity in a felony case typically occurs in the Superior Court, felony cases are reported as Superior Court filings regardless of whether they were initiated in District Court or in the Superior Court. A table showing the number of felony cases initiated in the District Court is provided for informational purposes (Table 5.13, page 72). To avoid double counting, these filings are not included in the District Court filing totals, but should be considered when evaluating the **workload** of a District Court.

Criminal Case Categorization

Criminal cases are categorized based on the most serious charge at filing. For example, if a defendant is charged with a felony and two misdemeanors, the case is counted as a felony. If the felony charge is subsequently reduced to a misdemeanor, the case type does not change; the case is still categorized as a felony for reporting purposes.

Reopened Cases

The criminal filing statistics in this report include only new case filings and do not include petitions to revoke probation or other proceedings that cause the court to reopen a criminal case. Likewise, the

domestic relations filing statistics include only new case filings and do not include post-judgment motions to modify custody, support or visitation. Because this post-judgment activity significantly impacts the trial court workload, tables showing this activity are provided for informational purposes. The number of petitions to revoke probation in felony and misdemeanor cases can be found in Tables 4.11 and 5.14 (pages 38 and 73). The number of filings of motions to modify custody, support, or visitation can be found in Table 4.19 (page 46).

Civil Protective Order Cases

The civil protective order case group includes petitions for domestic violence, stalking, and sexual assault protective orders. These cases may be filed in either District or Superior Court, but District Courts handle the vast majority. Because readers and researchers often want to know the total number of civil protective order cases that were filed, domestic violence, stalking, and sexual assault protective order cases filed in the Superior Court are counted with the District Court cases.

Note for Researchers

Readers and researchers should be aware that occasional changes in the manner in which cases are reported or recorded by the Alaska Court System may account for some changes over time in case filing totals for specific courts or jurisdictions. While the court system attempts to make the data tables in the annual report as consistent as possible from year to year, care is necessary, especially when discerning trends or making comparisons between time periods.

Statewide Trial Courts

**Table 3.01. Total Statewide Trial Court Case Filings
FY 22**

Court	Superior Court		District Court				Total	
	Filings	% of Superior Court total	Non-minor offense filings	Minor offense filings	Total filings	% of District Court total	Filings	% of statewide total
Anchorage	9,874	44.5%	14,465	21,541	36,006	42.6%	45,880	43.0%
Angoon	4	0.0%	9	0	9	0.0%	13	0.0%
Aniak	50	0.2%	54	19	73	0.1%	123	0.1%
Bethel	883	4.0%	1,014	89	1,103	1.3%	1,986	1.9%
Cordova	41	0.2%	54	70	124	0.1%	165	0.2%
Delta Junction	28	0.1%	95	691	786	0.9%	814	0.8%
Dillingham	231	1.0%	374	87	461	0.5%	692	0.6%
Emmonak	84	0.4%	113	5	118	0.1%	202	0.2%
Fairbanks	2,486	11.2%	4,168	4,549	8,717	10.3%	11,203	10.5%
Fort Yukon	21	0.1%	53	3	56	0.1%	77	0.1%
Galena	16	0.1%	46	4	50	0.1%	66	0.1%
Glennallen	76	0.3%	116	495	611	0.7%	687	0.6%
Haines	6	0.0%	52	73	125	0.2%	131	0.1%
Homer	333	1.5%	661	955	1,616	1.9%	1,949	1.8%
Hoonah	3	0.0%	20	22	42	0.1%	45	0.0%
Hooper Bay	51	0.2%	94	2	96	0.1%	147	0.1%
Juneau	965	4.4%	1,774	1,872	3,646	4.3%	4,611	4.3%
Kenai	1,217	5.5%	1,933	5,510	7,443	8.8%	8,660	8.1%
Ketchikan	545	2.5%	1,187	411	1,598	1.9%	2,143	2.0%
Kodiak	320	1.4%	362	598	960	1.1%	1,280	1.2%
Kotzebue	384	1.7%	440	47	487	0.6%	871	0.8%
Naknek	69	0.3%	214	93	307	0.4%	376	0.4%
Nenana	34	0.2%	98	2,285	2,383	2.8%	2,417	2.3%
Nome	318	1.4%	558	168	726	0.9%	1,044	1.0%
Palmer	2,964	13.3%	4,305	7,222	11,527	13.6%	14,491	13.6%
Petersburg	74	0.3%	133	104	237	0.3%	311	0.3%
Prince of Wales	101	0.5%	347	383	730	0.9%	831	0.8%
Sand Point	10	0.1%	38	8	46	0.1%	56	0.1%
Seward	147	0.7%	317	1,624	1,941	2.3%	2,088	2.0%
Sitka	225	1.0%	299	258	557	0.7%	782	0.7%
Skagway	0	0.0%	20	6	26	0.0%	26	0.0%
St. Mary's ¹	83	0.4%	146	3	149	0.2%	232	0.2%
St. Paul	16	0.1%	10	1	11	0.0%	27	0.0%
Tok	58	0.3%	104	177	281	0.3%	339	0.3%
Unalakleet	47	0.2%	137	13	150	0.2%	197	0.2%
Unalaska	31	0.1%	87	179	266	0.3%	297	0.3%
Utqiagvik	289	1.3%	518	69	587	0.7%	876	0.8%
Valdez	73	0.3%	153	92	245	0.3%	318	0.3%
Wrangell	53	0.2%	81	59	140	0.2%	193	0.2%
Yakutat	5	0.0%	22	17	39	0.0%	44	0.0%
Total	22,215	100.0%	34,671	49,804	84,475	100.0%	106,690	100.0%
1st District	1,981	8.9%	3,944	3,205	7,149	8.5%	9,130	8.6%
2nd District	1,038	4.7%	1,653	297	1,950	2.3%	2,988	2.8%
3rd District	15,402	69.3%	23,089	38,475	61,564	72.9%	76,966	72.1%
4th District	3,794	17.1%	5,985	7,827	13,812	16.3%	17,606	16.5%

1. St. Mary's court closed in 2016. Records for filings from the venue are still maintained separately.

**Table 3.02. Population Trends by Court Site
FY 22**

Court	Population served by court site*			Change 2010–2021		Change 2020–2021		% of statewide total
	2010	2020	2021	Number	Percent	Number	Percent	
Anchorage	292,256	291,695	290,124	-2,132	-0.7%	-1,571	-0.5%	39.5%
Angoon	459	357	360	-99	-21.6%	3	0.8%	0.0%
Aniak	1,948	2,410	2,296	348	17.9%	-114	-4.7%	0.3%
Bethel	15,605	17,288	17,108	1,503	9.6%	-180	-1.0%	2.3%
Chevak ¹	1,421	Served by Hooper Bay			N/S	N/S	N/S	N/S
Cordova	2,239	2,609	2,545	306	13.7%	-64	-2.5%	0.3%
Delta Junction	5,017	4,833	4,877	-140	-2.8%	44	0.9%	0.7%
Dillingham	4,847	4,857	4,718	-129	-2.7%	-139	-2.9%	0.6%
Emmonak	2,203	2,453	2,453	250	11.3%	0	0.0%	0.3%
Fairbanks	97,781	95,812	97,655	-126	-0.1%	1,843	1.9%	13.3%
Fort Yukon	1,165	960	1,020	-145	-12.4%	60	6.3%	0.1%
Galena	1,461	1,410	1,384	-77	-5.3%	-26	-1.8%	0.2%
Glennallen	3,037	2,617	2,626	-411	-13.5%	9	0.3%	0.4%
Haines	2,591	2,127	2,677	86	3.3%	550	25.9%	0.4%
Homer	13,899	15,214	15,327	1,428	10.3%	113	0.7%	2.1%
Hoonah ²	914	1,839	1,803	889	97.3%	-36	-2.0%	0.2%
Hooper Bay	1,112	3,047	2,870	1,758	158.1%	-177	-5.8%	0.4%
Juneau	31,860	32,255	32,155	295	0.9%	-100	-0.3%	4.4%
Kake ¹	557	Served by Petersburg			N/S	N/S	N/S	N/S
Kenai	35,902	37,697	37,895	1,993	5.6%	198	0.5%	5.2%
Ketchikan	14,969	15,450	15,340	371	2.5%	-110	-0.7%	2.1%
Kodiak	13,592	13,101	12,900	-692	-5.1%	-201	-1.5%	1.8%
Kotzebue	8,197	8,123	7,883	-314	-3.8%	-240	-3.0%	1.1%
McGrath ¹	505	Served by Aniak			N/S	N/S	N/S	N/S
Naknek	2,628	2,320	2,243	-385	-14.6%	-77	-3.3%	0.3%
Nenana	3,297	3,403	3,378	81	2.5%	-25	-0.7%	0.5%
Nome	7,264	7,667	7,364	100	1.4%	-303	-4.0%	1.0%
Palmer	88,995	107,081	108,805	19,810	22.3%	1,724	1.6%	14.8%
Petersburg ²	3,266	3,989	3,970	704	21.6%	-19	-0.5%	0.5%
Prince of Wales ³	4,008	3,582	3,621	-387	-9.7%	39	1.1%	0.5%
Sand Point	2,114	1,831	1,995	-119	-5.6%	164	9.0%	0.3%
Seward	5,465	5,771	5,633	168	3.1%	-138	-2.4%	0.8%
Sitka	9,041	8,658	8,572	-469	-5.2%	-86	-1.0%	1.2%
Skagway	968	1,240	1,203	235	24.3%	-37	-3.0%	0.2%
St. Mary's ⁴	2,723	2,868	2,816	93	3.4%	-52	-1.8%	0.4%
St. Paul	581	480	459	-122	-21.0%	-21	-4.4%	0.1%
Tanana ¹	246	Served by Nenana			N/S	N/S	N/S	N/S
Tok	2,012	1,975	2,004	-8	-0.4%	29	1.5%	0.3%
Unalakleet	2,228	2,379	2,327	99	4.4%	-52	-2.2%	0.3%
Unalaska	6,007	6,341	6,298	291	4.8%	-43	-0.7%	0.9%
Utqiagvik⁵	8,756	10,701	10,687	1,931	22.1%	-14	-0.1%	1.5%
Valdez	4,064	4,162	4,139	75	1.8%	-23	-0.6%	0.6%
Wrangell	2,369	2,127	2,096	-273	-11.5%	-31	-1.5%	0.3%
Yakutat	662	662	697	35	5.3%	35	5.3%	0.1%
Total	710,231	733,391	734,323	24,092	3.4%	932	0.1%	100.0%
1st District	71,664	72,286	72,494	830	1.2%	208	0.3%	9.9%
2nd District	26,445	28,870	28,261	1,816	6.9%	-609	-2.1%	3.8%
3rd District	475,626	495,776	495,707	20,081	4.2%	-69	0.0%	67.5%
4th District	136,496	136,459	137,861	1,365	1.0%	1,402	1.0%	18.8%

* Population of the communities served by each court site are taken from U.S. Census.

Note: This table is comparable to Table 6.01 on page 153 of the FY17 annual report.

N/S: Numbers 10 or less are not compared statistically.

1. Chevak court closed in FY 2014; McGrath and Tanana courts closed in FY 2015; Kake court closed in October 2018.

2. Beginning with FY 2019, the Petersburg venue population includes the population previously covered by Kake. The Hoonah population now includes the population numbers for Gustavus, Tenakee Springs, and Excursion Inlet, which were previously included within the Juneau venue population.

3. Craig court was renamed Prince of Wales in FY 2016.

4. St. Mary's court closed in 2016. Records for filings from the venue are still maintained separately.

5. The community of Barrow changed its name to Utqiagvik in 2016.

*Superior Court
Activity*



Sandhill cranes, Bishop's Beach, Homer (Third Judicial District)



Mountains in winter, Baranof Island (First Judicial District)

**Table 4.01. Total Superior Court Case Filings
FY 20 – FY 22**

Court	FY 20	FY 21	FY 22	Change	
				FY 20 to FY 22	FY 21 to FY 22
Anchorage	10,480	9,816	9,874	-6%	1%
Angoon	1	0	4	N/S	N/S
Aniak	64	35	50	-22%	43%
Bethel	825	790	883	7%	12%
Cordova	25	29	41	64%	41%
Delta Junction	39	40	28	-28%	-30%
Dillingham	272	273	231	-15%	-15%
Emmonak	104	79	84	-19%	6%
Fairbanks	2,645	2,630	2,486	-6%	-5%
Fort Yukon	23	27	21	-9%	-22%
Galena	18	14	16	-11%	14%
Glennallen	52	56	76	46%	36%
Haines	5	10	6	N/S	N/S
Homer	314	338	333	6%	-1%
Hoonah	7	2	3	N/S	N/S
Hooper Bay	53	53	51	-4%	-4%
Juneau	1,072	983	965	-10%	-2%
Kenai	1,320	1,255	1,217	-8%	-3%
Ketchikan	507	483	545	7%	13%
Kodiak	361	295	320	-11%	8%
Kotzebue	371	375	384	4%	2%
Naknek	65	62	69	6%	11%
Nenana	42	38	34	-19%	-11%
Nome	375	385	318	-15%	-17%
Palmer	2,523	2,909	2,964	17%	2%
Petersburg	63	64	74	17%	16%
Prince of Wales	140	138	101	-28%	-27%
Sand Point	26	11	10	N/S	N/S
Seward	146	132	147	1%	11%
Sitka	245	246	225	-8%	-9%
Skagway	1	2	0	N/S	N/S
St. Mary's ¹	88	74	83	-6%	12%
St. Paul	7	6	16	N/S	N/S
Tok	39	50	58	49%	16%
Unalakleet	69	60	47	-32%	-22%
Unalaska	48	33	31	-35%	-6%
Utqiagvik	323	242	289	-11%	19%
Valdez	84	72	73	-13%	1%
Wrangell	44	42	53	20%	26%
Yakutat	2	1	5	N/S	N/S
Total	22,888	22,150	22,215	-3%	0%
1st District	2,087	1,971	1,981	-5%	1%
2nd District	1,138	1,062	1,038	-9%	-2%
3rd District	15,723	15,287	15,402	-2%	1%
4th District	3,940	3,830	3,794	-4%	-1%

N/S: Numbers 10 or less are not compared statistically.

1. St. Mary's court closed in 2016. Records for filings from the venue are still maintained separately.

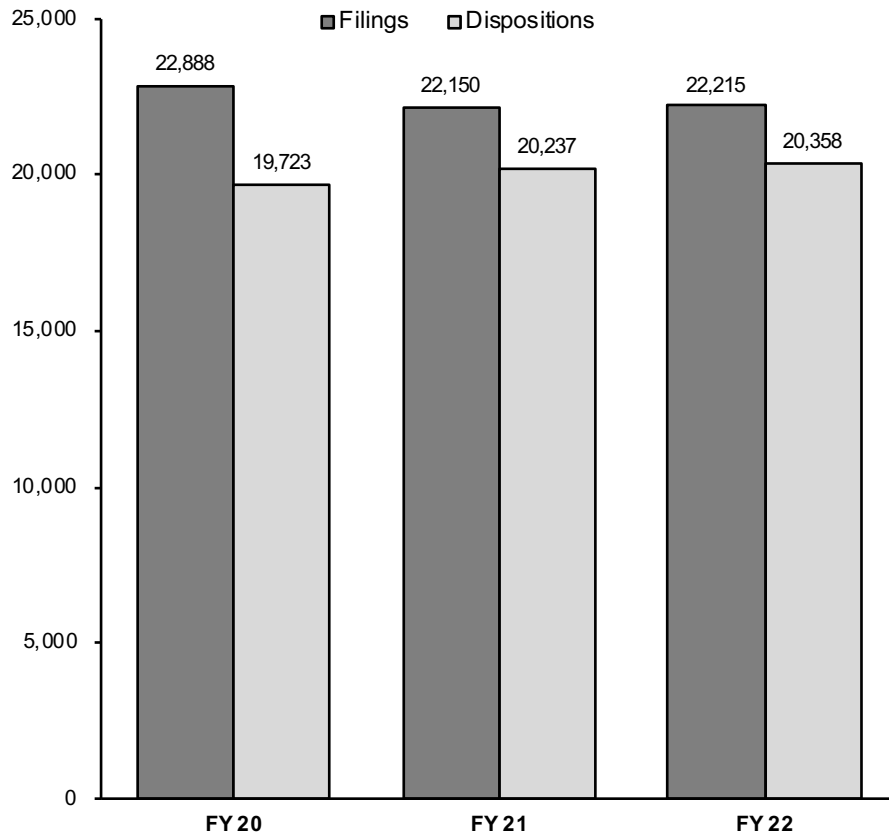
**Table 4.02. Total Superior Court Case Dispositions
FY 20 – FY 22**

Court	FY 20	FY 21	FY 22	Change	
				FY 20 to FY 22	FY 21 to FY 22
Anchorage	9,120	9,043	8,885	-3%	-2%
Angoon	2	1	1	N/S	N/S
Aniak	47	45	63	34%	40%
Bethel	704	718	812	15%	13%
Cordova	32	18	37	16%	106%
Delta Junction	40	33	33	-17%	0%
Dillingham	178	249	252	42%	1%
Emmonak	75	68	79	5%	16%
Fairbanks	2,437	2,505	2,525	4%	1%
Fort Yukon	20	24	19	-5%	-21%
Galena	21	14	19	-10%	36%
Glennallen	49	41	58	18%	41%
Haines	6	5	5	N/S	N/S
Homer	245	245	362	48%	48%
Hoonah	3	4	3	N/S	N/S
Hooper Bay	32	49	55	72%	12%
Juneau	890	948	943	6%	-1%
Kenai	1,096	1,441	1,044	-5%	-28%
Ketchikan	510	424	473	-7%	12%
Kodiak	278	278	283	2%	2%
Kotzebue	355	306	355	0%	16%
Naknek	49	44	65	33%	48%
Nenana	48	35	50	4%	43%
Nome	293	311	290	-1%	-7%
Palmer	2,091	2,309	2,526	21%	9%
Petersburg	62	61	66	6%	8%
Prince of Wales	110	135	120	9%	-11%
Sand Point	18	12	10	N/S	N/S
Seward	120	120	114	-5%	-5%
Sitka	231	247	236	2%	-4%
Skagway	1	2	0	N/S	N/S
St. Mary's ²	71	77	69	-3%	-10%
St. Paul	7	7	7	N/S	N/S
Tok	29	43	51	76%	19%
Unalakleet	47	44	43	-9%	-2%
Unalaska	40	42	27	-32%	-36%
Utqiagvik	265	208	257	-3%	24%
Valdez	67	39	71	6%	82%
Wrangell	30	42	49	63%	17%
Yakutat	4	0	1	N/S	N/S
Total	19,723	20,237	20,358	3%	1%
1st District	1,849	1,869	1,897	3%	1%
2nd District	960	869	945	-2%	9%
3rd District	13,390	13,888	13,741	3%	-1%
4th District	3,524	3,611	3,775	7%	5%

N/S: Numbers 10 or less are not compared statistically.

1. St. Mary's court closed in 2016. Records for filings from the venue are still maintained separately.

**Figure 4.01. Superior Court Filing and Disposition Trends
FY 20 – FY 22**



**Table 4.03. Superior Court Clearance Rates
FY 21 – FY 22**

Court	Filings		Dispositions		Clearance rates	
	FY 22	Change from FY 21	FY 22	Change from FY 21	FY 21	FY 22
Anchorage	9,874	1%	8,885	-2%	92%	90%
Angeon	4	N/S	1	N/S	N/S	N/S
Aniak	50	43%	63	40%	129%	126%
Bethel	883	12%	812	13%	91%	92%
Cordova	41	41%	37	106%	62%	90%
Delta Junction	28	-30%	33	0%	83%	118%
Dillingham	231	-15%	252	1%	91%	109%
Emmonak	84	6%	79	16%	86%	94%
Fairbanks	2,486	-5%	2,525	1%	95%	102%
Fort Yukon	21	-22%	19	-21%	89%	91%
Galena	16	14%	19	36%	100%	119%
Glennallen	76	36%	58	41%	73%	76%
Haines	6	N/S	5	N/S	N/S	N/S
Homer	333	-1%	362	48%	73%	109%
Hoonah	3	N/S	3	N/S	N/S	N/S
Hooper Bay	51	-4%	55	12%	93%	108%
Juneau	965	-2%	943	-1%	96%	98%
Kenai	1,217	-3%	1,044	-28%	115%	86%
Ketchikan	545	13%	473	12%	88%	87%
Kodiak	320	8%	283	2%	94%	88%
Kotzebue	384	2%	355	16%	82%	92%
Naknek	69	11%	65	48%	71%	94%
Nenana	34	-11%	50	43%	92%	147%
Nome	318	-17%	290	-7%	81%	91%
Palmer	2,964	2%	2,526	9%	79%	85%
Petersburg	74	16%	66	8%	95%	89%
Prince of Wales	101	-27%	120	-11%	98%	119%
Sand Point	10	N/S	10	N/S	109%	N/S
Seward	147	11%	114	-5%	91%	78%
Sitka	225	-9%	236	-4%	100%	105%
Skagway	0	N/S	0	N/S	N/S	N/S
St. Mary's ¹	83	12%	69	-10%	104%	83%
St. Paul	16	N/S	7	N/S	N/S	N/S
Tok	58	16%	51	19%	86%	88%
Unalakleet	47	-22%	43	-2%	73%	92%
Unalaska	31	-6%	27	-36%	127%	87%
Utqiagvik	289	19%	257	24%	86%	89%
Valdez	73	1%	71	82%	54%	97%
Wrangell	53	26%	49	17%	100%	93%
Yakutat	5	N/S	1	N/S	N/S	N/S
Total	22,215	0%	20,358	1%	91%	92%
1st District	1,981	1%	1,897	1%	95%	96%
2nd District	1,038	-2%	945	9%	82%	91%
3rd District	15,402	1%	13,741	-1%	91%	89%
4th District	3,794	-1%	3,775	5%	94%	100%

Clearance rate measures whether a court is keeping up with its incoming caseload. Courts aspire to clear (i.e., dispose of) at least as many cases as have been filed in a period by having a clearance rate of 100 percent or higher.

N/S: Numbers 10 or less are not compared statistically.

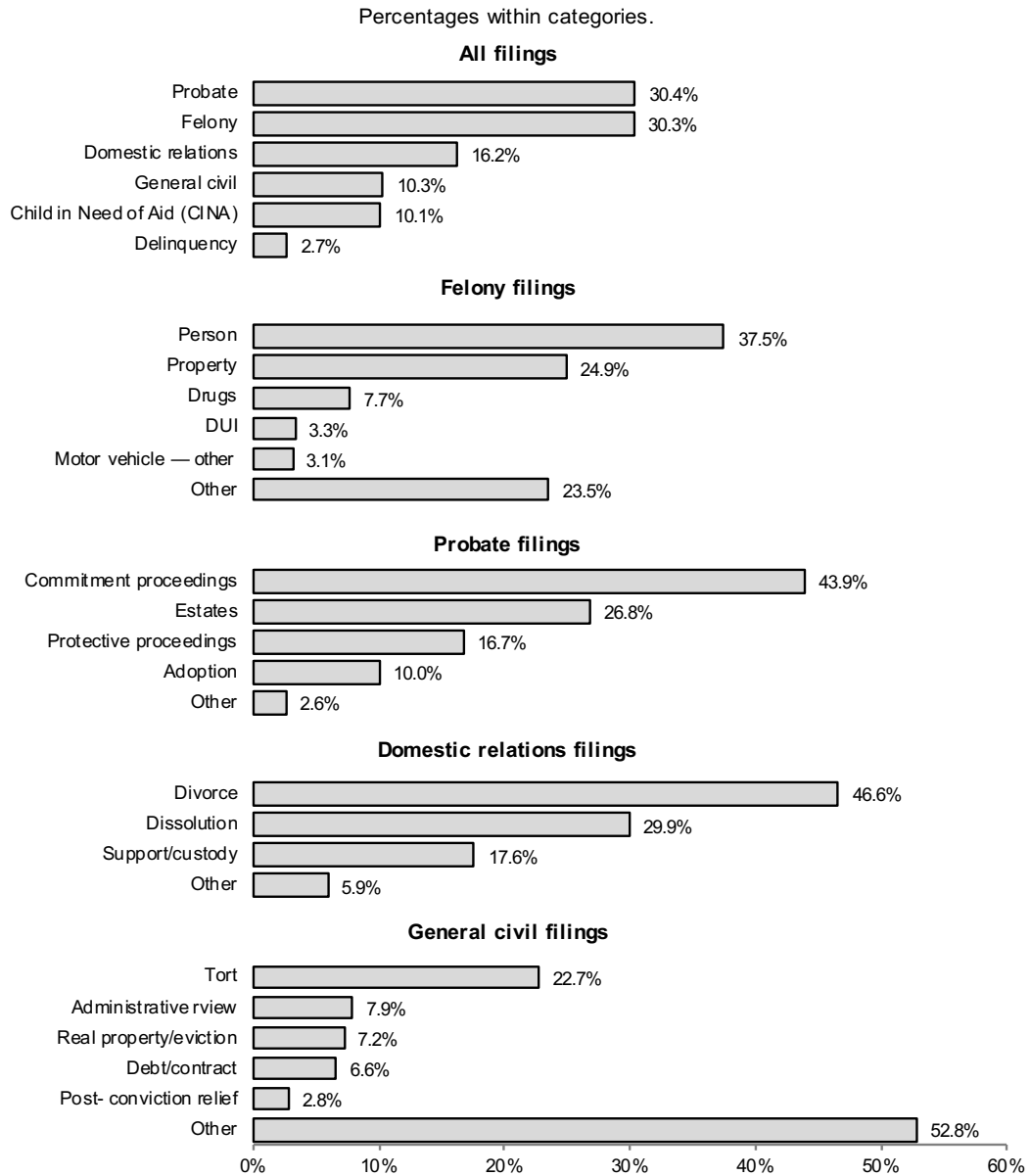
1. St. Mary's court closed in 2016. Records for filings from the venue are still maintained separately.

**Table 4.04. Superior Court Filings by Case Type
FY 22**

Court	Felony	CINA	Delinquency	Domestic relations	General civil	Probate	Total
Anchorage	3,057	780	254	1,511	1,101	3,171	9,874
Angoon	3	0	0	1	0	0	4
Aniak	43	3	4	0	0	0	50
Bethel	328	159	38	64	44	250	883
Cordova	10	7	3	4	3	14	41
Delta Junction	5	0	1	15	3	4	28
Dillingham	85	68	7	17	11	43	231
Emmonak	58	21	4	0	0	1	84
Fairbanks	647	222	29	639	309	640	2,486
Fort Yukon	18	0	0	2	1	0	21
Galena	15	0	0	0	0	1	16
Glennallen	24	28	1	10	4	9	76
Haines	6	0	0	0	0	0	6
Homer	125	21	9	69	25	84	333
Hoonah	2	0	0	0	0	1	3
Hooper Bay	42	6	3	0	0	0	51
Juneau	197	85	41	136	153	353	965
Kenai	361	96	37	198	134	391	1,217
Ketchikan	121	54	13	93	51	213	545
Kodiak	131	25	13	37	27	87	320
Kotzebue	142	94	6	50	22	70	384
Naknek	49	7	2	7	1	3	69
Nenana	24	0	2	3	4	1	34
Nome	116	40	19	38	16	89	318
Palmer	668	377	71	548	266	1,034	2,964
Petersburg	21	5	0	6	16	26	74
Prince of Wales	30	7	2	17	6	39	101
Sand Point	9	0	0	1	0	0	10
Seward	83	16	2	21	10	15	147
Sitka	37	24	18	40	22	84	225
Skagway	0	0	0	0	0	0	0
St. Mary's ¹	61	18	4	0	0	0	83
St. Paul	11	3	2	0	0	0	16
Tok	43	0	1	6	4	4	58
Unalakleet	47	0	0	0	0	0	47
Unalaska	12	0	0	3	14	2	31
Utqiagvik	79	56	14	36	38	66	289
Valdez	12	11	1	16	11	22	73
Wrangell	9	0	0	12	3	29	53
Yakutat	5	0	0	0	0	0	5
Total	6,736	2,233	601	3,600	2,299	6,746	22,215
% of total	30.3	10.1	2.7	16.2	10.3	30.4	100.0
1st District	431	175	74	305	251	745	1,981
2nd District	384	190	39	124	76	225	1,038
3rd District	4,637	1,439	402	2,442	1,607	4,875	15,402
4th District	1,284	429	86	729	365	901	3,794

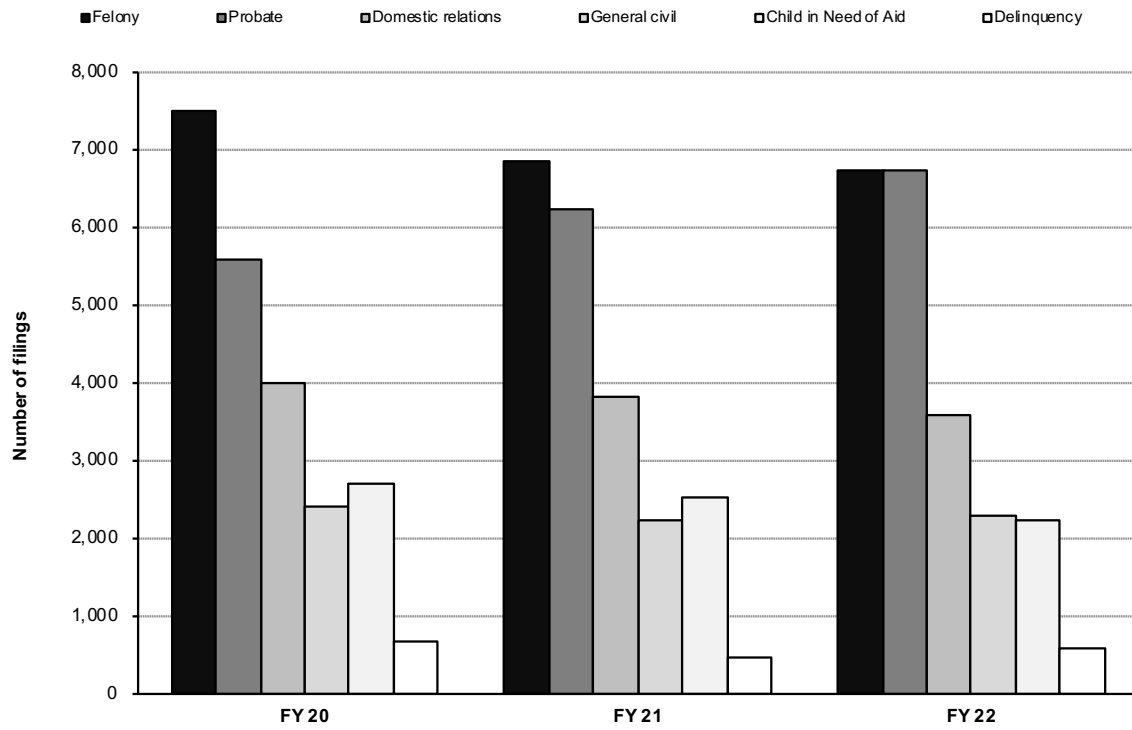
1. St. Mary's court closed in 2016. Records for filings from the venue are still maintained separately.

**Figure 4.02. Composition of Superior Court Filings
FY 22**



This chart analyzes the types of cases filed in Superior Court during FY22. Probate case filings are the major case filing type, comprising 30.40% of total case filings. Felony cases are second with 30.3% of the filings.

**Figure 4.03. Superior Court Filing Trends by Case Type
FY 20 – FY 22**



Filing Type	FY 20	FY 21	FY 22	FY 20 to FY 22 change	FY 21 to FY 22 change
Felony	7,504	6,854	6,736	-10%	-2%
Probate	5,604	6,244	6,746	20%	8%
Domestic relations	3,994	3,815	3,600	-10%	-6%
General civil	2,407	2,234	2,299	-4%	3%
Child in Need of Aid	2,714	2,530	2,233	-18%	-12%
Delinquency	665	473	601	-10%	27%
Total	22,888	22,150	22,215	-3%	0%

**Table 4.05. Superior Court Dispositions by Case Type
FY 22**

Court	Felony	CINA	Delinquency	Domestic relations	General civil	Probate	Total
Anchorage	3,087	676	119	1,337	1,140	2,526	8,885
Angoon	1	0	0	0	0	0	1
Aniak	53	7	3	0	0	0	63
Bethel	322	104	12	87	39	248	812
Cordova	17	1	0	3	4	12	37
Delta Junction	7	0	0	15	3	8	33
Dillingham	115	62	11	17	11	36	252
Emmonak	55	21	2	0	0	1	79
Fairbanks	726	301	34	598	292	574	2,525
Fort Yukon	17	0	0	1	1	0	19
Galena	16	0	1	0	0	2	19
Glennallen	21	8	1	13	4	11	58
Haines	5	0	0	0	0	0	5
Homer	154	38	11	58	37	64	362
Hoonah	2	0	0	0	0	1	3
Hooper Bay	45	2	8	0	0	0	55
Juneau	200	91	33	136	147	336	943
Kenai	264	111	28	200	124	317	1,044
Ketchikan	107	37	11	77	55	186	473
Kodiak	107	21	11	52	28	64	283
Kotzebue	165	63	8	44	21	54	355
Naknek	43	6	3	8	0	5	65
Nenana	41	0	2	6	1	0	50
Nome	110	49	8	40	15	68	290
Palmer	612	387	61	473	256	737	2,526
Petersburg	19	7	0	12	11	17	66
Prince of Wales	40	19	1	19	10	31	120
Sand Point	9	0	0	0	1	0	10
Seward	71	6	4	17	6	10	114
Sitka	41	25	12	38	29	91	236
Skagway	0	0	0	0	0	0	0
St. Mary's ¹	60	6	3	0	0	0	69
St. Paul	6	1	0	0	0	0	7
Tok	37	0	3	7	3	1	51
Unalakleet	43	0	0	0	0	0	43
Unalaska	9	0	1	5	11	1	27
Utqiagvik	94	29	8	38	34	54	257
Valdez	16	11	2	19	11	12	71
Wrangell	12	2	0	9	4	22	49
Yakutat	1	0	0	0	0	0	1
Total	6,750	2,091	401	3,329	2,298	5,489	20,358
% of total	33.1	10.3	2.0	16.3	11.3	27.0	100.0
1st District	428	181	57	291	256	684	1,897
2nd District	412	141	24	122	70	176	945
3rd District	4,531	1,328	252	2,202	1,633	3,795	13,741
4th District	1,379	441	68	714	339	834	3,775

1. St. Mary's court closed in 2016. Records for filings from the venue are still maintained separately.

**Table 4.06. Felony Case Filings
FY 20 – FY 22**

Court	FY 20	FY 21	FY 22	Change	
				FY 20 to FY 22	FY 21 to FY 22
Anchorage	3,337	3,035	3,057	-8%	1%
Angeon	1	0	3	N/S	N/S
Aniak	52	31	43	-17%	39%
Bethel	285	259	328	15%	27%
Cordova	6	16	10	N/S	N/S
Delta Junction	18	10	5	N/S	N/S
Dillingham	129	116	85	-34%	-27%
Emmonak	81	56	58	-28%	4%
Fairbanks	776	707	647	-17%	-8%
Fort Yukon	22	23	18	-18%	-22%
Galena	15	8	15	0%	N/S
Glennallen	18	21	24	33%	14%
Haines	5	9	6	N/S	N/S
Homer	118	110	125	6%	14%
Hoonah	7	1	2	N/S	N/S
Hooper Bay	39	43	42	8%	-2%
Juneau	288	229	197	-32%	-14%
Kenai	500	424	361	-28%	-15%
Ketchikan	124	122	121	-2%	-1%
Kodiak	139	77	131	-6%	70%
Kotzebue	169	185	142	-16%	-23%
Naknek	39	35	49	26%	40%
Nenana	34	30	24	-29%	-20%
Nome	149	157	116	-22%	-26%
Palmer	588	659	668	14%	1%
Petersburg	18	18	21	17%	17%
Prince of Wales	54	46	30	-44%	-35%
Sand Point	21	9	9	N/S	N/S
Seward	81	76	83	2%	9%
Sitka	61	44	37	-39%	-16%
Skagway	1	1	0	N/S	N/S
St. Mary's ¹	75	55	61	-19%	11%
St. Paul	7	6	11	N/S	N/S
Tok	29	37	43	48%	16%
Unalakleet	67	60	47	-30%	-22%
Unalaska	20	12	12	-40%	0%
Utqiagvik	93	98	79	-15%	-19%
Valdez	25	14	12	-52%	-14%
Wrangell	11	14	9	N/S	N/S
Yakutat	2	1	5	N/S	N/S
Total	7,504	6,854	6,736	-10%	-2%
1st District	572	485	431	-25%	-11%
2nd District	478	500	384	-20%	-23%
3rd District	5,028	4,610	4,637	-8%	1%
4th District	1,426	1,259	1,284	-10%	2%

N/S: Numbers 10 or less are not compared statistically.

1. St. Mary's court closed in 2016. Records for filings from the venue are still maintained separately.

**Table 4.07. Felony Filings by Case Type
FY 22**

Court	Person	Property	Drugs	Weapon	Public order	DUI	Reckless driving	Motor	Protective	Fish & Game	Other	Total
								vehicle — other	order violation			
Anchorage	963	854	145	108	4	92	0	83	0	0	808	3,057
Angeon	2	1	0	0	0	0	0	0	0	0	0	3
Aniak	35	4	0	1	1	0	0	0	0	0	2	43
Bethel	223	30	12	7	20	3	0	0	0	0	33	328
Cordova	4	3	1	0	0	0	0	2	0	0	0	10
Delta Junction	2	3	0	0	0	0	0	0	0	0	0	5
Dillingham	52	17	3	1	5	1	0	1	0	0	5	85
Emmonak	46	4	0	1	2	3	0	0	0	0	2	58
Fairbanks	204	159	43	27	10	14	0	27	0	0	163	647
Fort Yukon	9	3	0	1	0	0	0	0	0	0	5	18
Galena	10	2	0	0	0	0	0	0	0	0	3	15
Glennallen	11	4	3	2	0	0	0	0	0	0	4	24
Haines	3	1	0	0	0	1	0	0	0	0	1	6
Homer	38	32	28	5	0	5	0	2	0	0	15	125
Hoonah	1	0	1	0	0	0	0	0	0	0	0	2
Hooper Bay	35	2	0	0	0	0	0	0	0	0	5	42
Juneau	76	52	26	0	2	8	0	4	0	0	29	197
Kenai	104	86	69	11	0	27	0	12	0	0	52	361
Ketchikan	34	28	30	3	5	1	0	4	0	0	16	121
Kodiak	41	26	36	1	1	0	0	6	0	0	20	131
Kotzebue	95	23	3	2	14	1	0	0	0	0	4	142
Naknek	20	19	6	0	1	3	0	0	0	0	0	49
Nenana	11	2	0	0	0	3	0	0	0	0	8	24
Nome	87	8	4	0	3	4	0	2	0	0	8	116
Palmer	209	209	66	35	5	44	0	54	0	0	46	668
Petersburg	4	8	4	1	1	1	0	0	0	0	2	21
Prince of Wales	12	5	7	0	0	1	0	3	0	0	2	30
Sand Point	4	3	1	0	0	0	0	0	0	0	1	9
Seward	22	25	14	0	1	5	0	4	0	0	12	83
Sitka	6	10	12	1	0	4	0	1	0	0	3	37
Skagway	0	0	0	0	0	0	0	0	0	0	0	0
St. Mary's ¹	50	2	0	1	1	1	0	0	0	0	6	61
St. Paul	9	2	0	0	0	0	0	0	0	0	0	11
Tok	17	13	0	1	0	0	0	1	0	0	11	43
Unalakleet	38	6	0	0	0	1	0	0	0	0	2	47
Unalaska	5	6	0	0	0	0	0	0	0	0	1	12
Utqiagvik	35	15	4	2	3	0	0	3	0	0	17	79
Valdez	5	6	0	0	0	0	0	0	0	0	1	12
Wrangell	3	4	0	0	0	1	0	0	0	0	1	9
Yakutat	3	1	0	1	0	0	0	0	0	0	0	5
Total	2,528	1,678	518	212	79	224	0	209	0	0	1,288	6,736
% of total	37.5	24.9	7.7	3.2	1.2	3.3	0.0	3.1	0.0	0.0	19.1	100.0
1st District	144	110	80	6	8	17	0	12	0	0	54	431
2nd District	255	52	11	4	20	6	0	5	0	0	31	384
3rd District	1,487	1,292	372	163	17	177	0	164	0	0	965	4,637
4th District	642	224	55	39	34	24	0	28	0	0	238	1,284

1. St. Mary's court closed in 2016. Records for filings from the venue are still maintained separately.

**Table 4.08. Criminal Case Types
FY 22**

Person	Public Order
Homicide	Riot
Assault	Disorderly Conduct
Reckless Endangerment	Harassment
Kidnapping	Indecent Viewing or Photography
Custodial Interference	Possess or Distribute Child Pornography
Human Trafficking	Cruelty to Animals
Sex Offenses	Recruiting Gang Members
Robbery	Gambling
Extortion	Alcohol Licensing Laws
Coercion	
	Motor Vehicle DUI
Property	Motor Vehicle Reckless Driving
Theft	
Burglary	Motor Vehicle Other
Criminal Trespass	
Vehicle Theft	Protection Order Violation
Arson	
Criminal Mischief	Fish and Game
Business and Commercial Offenses	
	Other
Drugs	Offenses against Public Administration
Misconduct Involving a Controlled Substance	Offenses against Family and
Manufacture, Delivery or Possession of	Vulnerable Adults
Imitation Controlled Substance	All other offenses, including cases in which
	a charging document was never filed
Weapons	
Misconduct Involving Weapons	
Criminal Possession of Explosives	
Unlawful Furnishing of Explosives	

Criminal cases typically contain multiple charges. The Alaska Court System categorizes cases for reporting purposes based on the most serious charge.

In FY07 the Alaska Court System changed the way it categorizes criminal cases for annual reporting. The categories now conform to the National Center for State Courts' national model for caseload statistical reporting. This change is intended to make Alaska statistics easier to compile, understand, and compare to those of other jurisdictions.

**Table 4.09. Felony Case Dispositions
FY 20 – FY 22**

Court	FY 20	FY 21	FY 22	Change	
				FY 20 to FY 22	FY 21 to FY 22
Anchorage	2,710	2,230	3,087	14%	38%
Angoon	2	1	1	N/S	N/S
Aniak	39	38	53	36%	39%
Bethel	262	240	322	23%	34%
Cordova	10	5	17	N/S	N/S
Delta Junction	15	11	7	N/S	N/S
Dillingham	86	91	115	34%	26%
Emmonak	55	58	55	0%	-5%
Fairbanks	710	653	726	2%	11%
Fort Yukon	19	23	17	-11%	-26%
Galena	17	9	16	-6%	N/S
Glennallen	11	16	21	91%	31%
Haines	6	4	5	N/S	N/S
Homer	103	79	154	50%	95%
Hoonah	3	3	2	N/S	N/S
Hooper Bay	26	40	45	73%	13%
Juneau	204	200	200	-2%	0%
Kenai	406	522	264	-35%	-49%
Ketchikan	141	120	107	-24%	-11%
Kodiak	102	81	107	5%	32%
Kotzebue	165	142	165	0%	16%
Naknek	29	17	43	48%	153%
Nenana	41	24	41	0%	71%
Nome	114	95	110	-4%	16%
Palmer	432	450	612	42%	36%
Petersburg	19	15	19	0%	27%
Prince of Wales	61	45	40	-34%	-11%
Sand Point	15	10	9	N/S	N/S
Seward	62	62	71	15%	15%
Sitka	50	59	41	-18%	-31%
Skagway	1	2	0	N/S	N/S
St. Mary's ¹	58	62	60	3%	-3%
St. Paul	5	6	6	N/S	N/S
Tok	20	27	37	85%	37%
Unalakleet	45	44	43	-4%	-2%
Unalaska	16	18	9	N/S	N/S
Utqiagvik	103	60	94	-9%	57%
Valdez	22	5	16	-27%	N/S
Wrangell	7	12	12	N/S	0%
Yakutat	4	0	1	N/S	N/S
Total	6,196	5,579	6,750	9%	21%
1st District	498	461	428	-14%	-7%
2nd District	427	341	412	-4%	21%
3rd District	4,009	3,592	4,531	13%	26%
4th District	1,262	1,185	1,379	9%	16%

N/S: Numbers 10 or less are not compared statistically.

1. St. Mary's court closed in 2016. Records for filings from the venue are still maintained separately.

**Table 4.10. Felony Case Dispositions by Manner of Disposition
FY 22**

Court	Cases disposed in District Court ¹						Cases disposed in Superior Court						Total
	Non-trial			Trial		Subtotal	Non-trial			Trial		Subtotal	
	Case dismissed	Guilty plea	Other	Guilty	Not guilty		Case dismissed	Guilty plea	Other	Guilty	Not guilty		
Anchorage	1,410	713	2	0	1	2,126	166	779	0	11	5	961	3,087
Angoon	0	1	0	0	0	1	0	0	0	0	0	0	1
Aniak	15	4	0	0	0	19	13	19	0	1	1	34	53
Bethel	56	29	3	0	0	88	86	143	0	4	1	234	322
Cordova	2	7	0	0	0	9	2	6	0	0	0	8	17
Delta Junction	0	1	0	0	0	1	1	5	0	0	0	6	7
Dillingham	20	48	0	0	0	68	12	34	0	1	0	47	115
Emmonak	11	8	0	0	0	19	8	27	0	0	1	36	55
Fairbanks	129	62	0	0	0	191	129	395	0	7	4	535	726
Fort Yukon	3	1	0	0	0	4	3	10	0	0	0	13	17
Galena	1	1	0	0	0	2	2	11	0	1	0	14	16
Glennallen	7	9	0	0	0	16	1	4	0	0	0	5	21
Haines	1	1	1	0	0	3	1	1	0	0	0	2	5
Homer	28	44	1	0	0	73	15	65	0	1	0	81	154
Hoonah	1	0	0	0	0	1	1	0	0	0	0	1	2
Hooper Bay	5	8	0	0	0	13	14	18	0	0	0	32	45
Juneau	23	16	2	0	0	41	35	120	0	3	1	159	200
Kenai	26	51	1	0	0	78	35	143	0	4	4	186	264
Ketchikan	26	15	0	0	0	41	18	45	0	1	2	66	107
Kodiak	5	22	0	0	0	27	16	62	0	2	0	80	107
Kotzebue	19	74	0	0	0	93	5	64	0	2	1	72	165
Naknek	18	11	0	0	0	29	0	14	0	0	0	14	43
Nenana	10	1	0	0	0	11	11	17	1	1	0	30	41
Nome	33	49	0	0	0	82	3	25	0	0	0	28	110
Palmer	94	178	2	0	0	274	66	271	0	1	0	338	612
Petersburg	0	4	0	0	0	4	2	13	0	0	0	15	19
Prince of Wales	16	4	0	0	0	20	5	13	0	1	1	20	40
Sand Point	2	4	0	0	0	6	1	2	0	0	0	3	9
Seward	10	15	1	0	0	26	4	40	0	1	0	45	71
Sitka	4	14	0	0	0	18	1	21	0	1	0	23	41
Skagway	0	0	0	0	0	0	0	0	0	0	0	0	0
St. Mary's ²	7	6	1	0	0	14	13	29	1	1	2	46	60
St. Paul	3	2	0	0	0	5	0	1	0	0	0	1	6
Tok	18	1	0	0	0	19	8	9	0	1	0	18	37
Unalakleet	11	24	0	0	0	35	0	8	0	0	0	8	43
Unalaska	1	4	0	0	0	5	0	4	0	0	0	4	9
Utqiagvik	21	13	0	0	0	34	10	48	0	0	2	60	94
Valdez	2	7	0	0	0	9	0	7	0	0	0	7	16
Wrangell	1	0	0	0	0	1	2	8	0	0	1	11	12
Yakutat	0	0	0	0	0	0	0	1	0	0	0	1	1
Total	2,039	1,452	14	0	1	3,506	689	2,482	2	45	26	3,244	6,750
% of total	30.2	21.5	0.2	0.0	0.0	51.9	10.2	36.8	0.0	0.7	0.4	48.1	100.0
1st District	72	55	3	0	0	130	65	222	0	6	5	298	428
2nd District	84	160	0	0	0	244	18	145	0	2	3	168	412
3rd District	1,628	1,115	7	0	1	2,751	318	1,432	0	21	9	1,780	4,531
4th District	255	122	4	0	0	381	288	683	2	16	9	998	1,379

Note: Due to the covid pandemic, jury trials were suspended for various periods at various locations throughout FY22.

1. All felony charges were either reduced to misdemeanors or dismissed while these cases were still in District Court. Convictions in these cases were for misdemeanors only.
2. St. Mary's court closed in 2016. Records for filings from the venue are still maintained separately.

**Table 4.11. Post-judgment Filings: Felony Petitions to
Revoke Probation
FY 20 – FY 22**

Court	FY 20	FY 21	FY 22	Change	
				FY 20 to FY 22	FY 21 to FY 22
Anchorage	1,080	843	729	-32%	-14%
Angoon	3	2	0	N/S	N/S
Aniak	21	13	18	-14%	38%
Bethel	180	104	87	-52%	-16%
Cordova	0	0	0	N/S	N/S
Delta Junction	3	2	7	N/S	N/S
Dillingham	22	20	40	82%	100%
Emmonak	39	34	17	-56%	-50%
Fairbanks	329	262	255	-22%	-3%
Fort Yukon	9	12	6	N/S	N/S
Galena	5	4	8	N/S	N/S
Glennallen	2	4	3	N/S	N/S
Haines	1	1	1	N/S	N/S
Homer	39	50	68	74%	36%
Hoonah	1	0	0	N/S	N/S
Hooper Bay	14	17	14	0%	-18%
Juneau	103	91	90	-13%	-1%
Kenai	256	257	275	7%	7%
Ketchikan	208	138	118	-43%	-14%
Kodiak	78	65	73	-6%	12%
Kotzebue	91	66	101	11%	53%
Naknek	12	8	7	N/S	N/S
Nenana	11	5	9	N/S	N/S
Nome	66	54	63	-5%	17%
Palmer	296	208	150	-49%	-28%
Petersburg	6	11	7	N/S	N/S
Prince of Wales	65	51	20	-69%	-61%
Sand Point	2	2	13	N/S	N/S
Seward	33	27	23	-30%	-15%
Sitka	17	18	27	59%	50%
Skagway	0	1	0	N/S	N/S
St. Mary's ¹	28	18	8	N/S	N/S
St. Paul	2	1	1	N/S	N/S
Tok	5	8	6	N/S	N/S
Unalakleet	15	13	12	-20%	-8%
Unalaska	8	6	3	N/S	N/S
Utqiagvik	24	20	18	-25%	-10%
Valdez	4	9	8	N/S	N/S
Wrangell	6	7	12	N/S	N/S
Yakutat	0	0	4	N/S	N/S
Total	3,084	2,452	2,301	-25%	-6%
1st District	410	320	279	-32%	-13%
2nd District	196	153	194	-1%	27%
3rd District	1,834	1,500	1,393	-24%	-7%
4th District	644	479	435	-32%	-9%

N/S: Numbers 10 or less are not compared statistically.

1. St. Mary's court closed in 2016. Records for filings from the venue are still maintained separately.

**Table 4.12. Probate Case Filings
FY 20 – FY 22**

Court	FY 20	FY 21	FY 22	Change	
				FY 20 to FY 22	FY 21 to FY 22
Anchorage	2,809	2,901	3,171	13%	9%
Angoon	0	0	0	N/S	N/S
Aniak	0	0	0	N/S	N/S
Bethel	196	222	250	28%	13%
Cordova	5	5	14	N/S	N/S
Delta Junction	3	13	4	N/S	N/S
Dillingham	46	39	43	-7%	10%
Emmonak	0	1	1	N/S	N/S
Fairbanks	590	639	640	8%	0%
Fort Yukon	0	0	0	N/S	N/S
Galena	1	2	1	N/S	N/S
Glennallen	5	3	9	N/S	N/S
Haines	0	0	0	N/S	N/S
Homer	77	93	84	9%	-10%
Hoonah	0	1	1	N/S	N/S
Hooper Bay	0	0	0	N/S	N/S
Juneau	371	349	353	-5%	1%
Kenai	284	377	391	38%	4%
Ketchikan	211	167	213	1%	28%
Kodiak	67	76	87	30%	14%
Kotzebue	54	63	70	30%	11%
Naknek	4	7	3	N/S	N/S
Nenana	0	0	1	N/S	N/S
Nome	61	89	89	46%	0%
Palmer	583	907	1,034	77%	14%
Petersburg	16	21	26	63%	24%
Prince of Wales	17	44	39	129%	-11%
Sand Point	3	1	0	N/S	N/S
Seward	20	22	15	-25%	-32%
Sitka	75	109	84	12%	-23%
Skagway	0	0	0	N/S	N/S
St. Mary's ¹	0	0	0	N/S	N/S
St. Paul	0	0	0	N/S	N/S
Tok	0	6	4	N/S	N/S
Unalakleet	2	0	0	N/S	N/S
Unalaska	5	4	2	N/S	N/S
Utqiagvik	70	54	66	-6%	22%
Valdez	15	14	22	47%	57%
Wrangell	14	15	29	107%	93%
Yakutat	0	0	0	N/S	N/S
Total	5,604	6,244	6,746	20%	8%
1st District	704	706	745	6%	6%
2nd District	187	206	225	20%	9%
3rd District	3,923	4,449	4,875	24%	10%
4th District	790	883	901	14%	2%

N/S: Numbers 10 or less are not compared statistically.

1. St. Mary's court closed in 2016. Records for filings from the venue are still maintained separately.

**Table 4.13. Probate Filings by Case Type
FY 22**

Court	Adoptions	Estates	Commitment proceedings	Protective proceedings ¹	Minor proceedings ²	Other	Total
Anchorage	279	713	1,582	485	71	41	3,171
Angeon	0	0	0	0	0	0	0
Aniak	0	0	0	0	0	0	0
Bethel	14	11	187	34	4	0	250
Cordova	1	4	5	4	0	0	14
Delta Junction	0	2	1	1	0	0	4
Dillingham	7	12	12	12	0	0	43
Emmonak	0	0	1	0	0	0	1
Fairbanks	101	262	125	143	7	2	640
Fort Yukon	0	0	0	0	0	0	0
Galena	0	0	0	1	0	0	1
Glennallen	0	3	1	5	0	0	9
Haines	0	0	0	0	0	0	0
Homer	13	41	14	14	2	0	84
Hoonah	0	0	1	0	0	0	1
Hooper Bay	0	0	0	0	0	0	0
Juneau	26	96	181	44	5	1	353
Kenai	40	174	64	108	4	1	391
Ketchikan	17	62	105	23	4	2	213
Kodiak	7	36	28	12	4	0	87
Kotzebue	7	1	46	15	1	0	70
Naknek	2	0	0	1	0	0	3
Nenana	0	0	0	1	0	0	1
Nome	5	12	40	32	0	0	89
Palmer	139	255	469	146	25	0	1,034
Petersburg	1	19	2	3	1	0	26
Prince of Wales	2	15	14	7	1	0	39
Sand Point	0	0	0	0	0	0	0
Seward	1	7	1	5	0	1	15
Sitka	2	25	44	13	0	0	84
Skagway	0	0	0	0	0	0	0
St. Mary's ³	0	0	0	0	0	0	0
St. Paul	0	0	0	0	0	0	0
Tok	0	4	0	0	0	0	4
Unalakleet	0	0	0	0	0	0	0
Unalaska	0	0	2	0	0	0	2
Utqiagvik	1	30	27	7	1	0	66
Valdez	6	12	2	2	0	0	22
Wrangell	3	10	7	9	0	0	29
Yakutat	0	0	0	0	0	0	0
Total	674	1,806	2,961	1,127	130	48	6,746
% of total	10.0	26.8	43.9	16.7	1.9	0.7	100.0
1st District	51	227	354	99	11	3	745
2nd District	13	43	113	54	2	0	225
3rd District	495	1,257	2,180	794	106	43	4,875
4th District	115	279	314	180	11	2	901

1. Guardianships, conservatorships, etc.

2. Minor settlements, emancipations, etc.

3. St. Mary's court closed in 2016. Records for filings from the venue are still maintained separately.

**Table 4.14. Probate Case Dispositions
FY 20 – FY 22**

Court	FY 20	FY 21	FY 22	Change	
				FY 20 to FY 22	FY 21 to FY 22
Anchorage	2,297	2,934	2,526	10%	-14%
Angoon	0	0	0	N/S	N/S
Aniak	0	0	0	N/S	N/S
Bethel	170	202	248	46%	23%
Cordova	9	2	12	N/S	N/S
Delta Junction	5	7	8	N/S	N/S
Dillingham	28	57	36	29%	-37%
Emmonak	0	1	1	N/S	N/S
Fairbanks	556	552	574	3%	4%
Fort Yukon	0	0	0	N/S	N/S
Galena	0	2	2	N/S	N/S
Glennallen	5	4	11	N/S	N/S
Haines	0	0	0	N/S	N/S
Homer	51	54	64	25%	19%
Hoonah	0	1	1	N/S	N/S
Hooper Bay	0	0	0	N/S	N/S
Juneau	338	333	336	-1%	1%
Kenai	211	411	317	50%	-23%
Ketchikan	194	167	186	-4%	11%
Kodiak	58	75	64	10%	-15%
Kotzebue	39	45	54	38%	20%
Naknek	5	4	5	N/S	N/S
Nenana	0	0	0	N/S	N/S
Nome	50	63	68	36%	8%
Palmer	449	734	737	64%	0%
Petersburg	16	16	17	6%	6%
Prince of Wales	15	34	31	107%	-9%
Sand Point	2	0	0	N/S	N/S
Seward	25	14	10	N/S	N/S
Sitka	70	91	91	30%	0%
Skagway	0	0	0	N/S	N/S
St. Mary's ¹	0	0	0	N/S	N/S
St. Paul	0	1	0	N/S	N/S
Tok	0	2	1	N/S	N/S
Unalakleet	2	0	0	N/S	N/S
Unalaska	3	5	1	N/S	N/S
Utqiagvik	54	57	54	0%	-5%
Valdez	4	10	12	N/S	N/S
Wrangell	10	12	22	N/S	83%
Yakutat	0	0	0	N/S	N/S
Total	4,666	5,890	5,489	18%	-7%
1st District	643	654	684	6%	5%
2nd District	145	165	176	21%	7%
3rd District	3,147	4,305	3,795	21%	-12%
4th District	731	766	834	14%	9%

N/S: Numbers 10 or less are not compared statistically.

1. St. Mary's court closed in 2016. Records for filings from the venue are still maintained separately.

**Table 4.15. Domestic Relations Case Filings
FY 20 – FY 22**

Court	FY 20	FY 21	FY 22	Change	
				FY 20 to FY 22	FY 21 to FY 22
Anchorage	1,780	1,594	1,511	-15%	-5%
Angoon	0	0	1	N/S	N/S
Aniak	0	0	0	N/S	N/S
Bethel	105	89	64	-39%	-28%
Cordova	7	5	4	N/S	N/S
Delta Junction	16	14	15	-6%	7%
Dillingham	23	19	17	-26%	-11%
Emmonak	1	0	0	N/S	N/S
Fairbanks	588	647	639	9%	-1%
Fort Yukon	1	1	2	N/S	N/S
Galena	0	2	0	N/S	N/S
Glennallen	7	11	10	N/S	N/S
Haines	0	1	0	N/S	N/S
Homer	56	61	69	23%	13%
Hoonah	0	0	0	N/S	N/S
Hooper Bay	0	0	0	N/S	N/S
Juneau	178	169	136	-24%	-20%
Kenai	218	217	198	-9%	-9%
Ketchikan	90	74	93	3%	26%
Kodiak	61	61	37	-39%	-39%
Kotzebue	46	44	50	9%	14%
Naknek	6	6	7	N/S	N/S
Nenana	7	7	3	N/S	N/S
Nome	40	44	38	-5%	-14%
Palmer	543	575	548	1%	-5%
Petersburg	17	15	6	N/S	N/S
Prince of Wales	22	22	17	-23%	-23%
Sand Point	0	0	1	N/S	N/S
Seward	20	13	21	5%	62%
Sitka	42	46	40	-5%	-13%
Skagway	0	0	0	N/S	N/S
St. Mary's ¹	0	0	0	N/S	N/S
St. Paul	0	0	0	N/S	N/S
Tok	7	5	6	N/S	N/S
Unalakleet	0	0	0	N/S	N/S
Unalaska	15	7	3	N/S	N/S
Utqiagvik	60	41	36	-40%	-12%
Valdez	24	18	16	-33%	-11%
Wrangell	14	7	12	-14%	N/S
Yakutat	0	0	0	N/S	N/S
Total	3,994	3,815	3,600	-10%	-6%
1st District	363	334	305	-16%	-9%
2nd District	146	129	124	-15%	-4%
3rd District	2,760	2,587	2,442	-12%	-6%
4th District	725	765	729	1%	-5%

N/S: Numbers 10 or less are not compared statistically.

1. St. Mary's court closed in 2016. Records for filings from the venue are still maintained separately.

**Table 4.16. Domestic Relations Filings by Case Type
FY 22**

Court	Divorce	Dissolution	Support/ custody	Other	Total
Anchorage	680	507	249	75	1,511
Angoon	0	1	0	0	1
Aniak	0	0	0	0	0
Bethel	25	7	10	22	64
Cordova	2	2	0	0	4
Delta Junction	10	4	1	0	15
Dillingham	7	5	0	5	17
Emmonak	0	0	0	0	0
Fairbanks	378	147	90	24	639
Fort Yukon	0	1	1	0	2
Galena	0	0	0	0	0
Glennallen	1	1	3	5	10
Haines	0	0	0	0	0
Homer	29	24	14	2	69
Hoonah	0	0	0	0	0
Hooper Bay	0	0	0	0	0
Juneau	61	47	24	4	136
Kenai	87	60	46	5	198
Ketchikan	43	25	23	2	93
Kodiak	13	13	8	3	37
Kotzebue	17	4	9	20	50
Naknek	2	0	0	5	7
Nenana	0	0	0	3	3
Nome	16	7	8	7	38
Palmer	257	169	107	15	548
Petersburg	3	1	2	0	6
Prince of Wales	3	6	8	0	17
Sand Point	1	0	0	0	1
Seward	6	9	4	2	21
Sitka	13	19	7	1	40
Skagway	0	0	0	0	0
St. Mary's ¹	0	0	0	0	0
St. Paul	0	0	0	0	0
Tok	0	0	4	2	6
Unalakleet	0	0	0	0	0
Unalaska	1	2	0	0	3
Utqiagvik	12	7	8	9	36
Valdez	8	6	2	0	16
Wrangell	4	3	5	0	12
Yakutat	0	0	0	0	0
Total	1,679	1,077	633	211	3,600
% of total	46.6	29.9	17.6	5.9	100.0
1st District	127	102	69	7	305
2nd District	45	18	25	36	124
3rd District	1,094	798	433	117	2,442
4th District	413	159	106	51	729

1. St. Mary's court closed in 2016. Records for filings from the venue are still maintained separately.

**Table 4.17. Domestic Relations Case Dispositions
FY 20 – FY 22**

Court	FY 20	FY 21	FY 22	Change	
				FY 20 to FY 22	FY 21 to FY 22
Anchorage	1,655	1,679	1,337	-19%	-20%
Angoon	0	0	0	N/S	N/S
Aniak	0	0	0	N/S	N/S
Bethel	82	108	87	6%	-19%
Cordova	6	8	3	N/S	N/S
Delta Junction	17	13	15	-12%	15%
Dillingham	20	27	17	-15%	-37%
Emmonak	0	1	0	N/S	N/S
Fairbanks	570	667	598	5%	-10%
Fort Yukon	1	0	1	N/S	N/S
Galena	0	2	0	N/S	N/S
Glennallen	7	7	13	N/S	N/S
Haines	0	1	0	N/S	N/S
Homer	46	54	58	26%	7%
Hoonah	0	0	0	N/S	N/S
Hooper Bay	0	0	0	N/S	N/S
Juneau	160	192	136	-15%	-29%
Kenai	193	225	200	4%	-11%
Ketchikan	95	70	77	-19%	10%
Kodiak	51	57	52	2%	-9%
Kotzebue	52	46	44	-15%	-4%
Naknek	3	7	8	N/S	N/S
Nenana	4	10	6	N/S	N/S
Nome	29	43	40	38%	-7%
Palmer	517	450	473	-9%	5%
Petersburg	15	16	12	-20%	-25%
Prince of Wales	23	21	19	-17%	-10%
Sand Point	0	1	0	N/S	N/S
Seward	17	13	17	0%	31%
Sitka	50	45	38	-24%	-16%
Skagway	0	0	0	N/S	N/S
St. Mary's ¹	0	0	0	N/S	N/S
St. Paul	1	0	0	N/S	N/S
Tok	9	9	7	N/S	N/S
Unalakleet	0	0	0	N/S	N/S
Unalaska	9	13	5	N/S	N/S
Utqiagvik	23	47	38	65%	-19%
Valdez	20	13	19	-5%	46%
Wrangell	10	12	9	N/S	N/S
Yakutat	0	0	0	N/S	N/S
Total	3,685	3,857	3,329	-10%	-14%
1st District	353	357	291	-18%	-18%
2nd District	104	136	122	17%	-10%
3rd District	2,545	2,554	2,202	-13%	-14%
4th District	683	810	714	5%	-12%

N/S: Numbers 10 or less are not compared statistically.

1. St. Mary's court closed in 2016. Records for filings from the venue are still maintained separately.

**Table 4.18. Domestic Relations Case Dispositions by
Manner of Disposition
FY 22**

Court	Stage of disposition				Total
	Dismissed	Dissolution/ divorce hearing	Trial	Other	
Anchorage	202	774	218	143	1,337
Angeon	0	0	0	0	0
Aniak	0	0	0	0	0
Bethel	12	26	7	42	87
Cordova	0	3	0	0	3
Delta Junction	2	9	2	2	15
Dillingham	2	7	3	5	17
Emmonak	0	0	0	0	0
Fairbanks	115	301	133	49	598
Fort Yukon	1	0	0	0	1
Galena	0	0	0	0	0
Glennallen	1	2	1	9	13
Haines	0	0	0	0	0
Homer	9	41	6	2	58
Hoonah	0	0	0	0	0
Hooper Bay	0	0	0	0	0
Juneau	17	110	5	4	136
Kenai	36	124	26	14	200
Ketchikan	17	44	10	6	77
Kodiak	13	32	4	3	52
Kotzebue	10	7	0	27	44
Naknek	0	2	0	6	8
Nenana	1	0	0	5	6
Nome	7	15	5	13	40
Palmer	68	318	54	33	473
Petersburg	3	4	4	1	12
Prince of Wales	4	10	3	2	19
Sand Point	0	0	0	0	0
Seward	3	7	2	5	17
Sitka	4	26	5	3	38
Skagway	0	0	0	0	0
St. Mary's ¹	0	0	0	0	0
St. Paul	0	0	0	0	0
Tok	1	2	1	3	7
Unalakleet	0	0	0	0	0
Unalaska	1	4	0	0	5
Utqiagvik	14	8	2	14	38
Valdez	3	11	2	3	19
Wrangell	1	4	2	2	9
Yakutat	0	0	0	0	0
Total	547	1,891	495	396	3,329
% of total	16.4	56.8	14.9	11.9	100.0
1st District	46	198	29	18	291
2nd District	31	30	7	54	122
3rd District	338	1,325	316	223	2,202
4th District	132	338	143	101	714

1. St. Mary's court closed in 2016. Records for filings from the venue are still maintained separately.

**Table 4.19. Post-judgment Filings: Motions to Modify
Custody, Support or Visitation
FY 20 – FY 22**

Court	FY 20	FY 21	FY 22	Change	
				FY 20 to FY 22	FY 21 to FY 22
Anchorage	490	409	429	-12%	5%
Angoon	0	0	0	N/S	N/S
Aniak	0	0	0	N/S	N/S
Bethel	3	3	5	N/S	N/S
Cordova	3	5	0	N/S	N/S
Delta Junction	1	4	3	N/S	N/S
Dillingham	10	4	8	N/S	N/S
Emmonak	0	0	0	N/S	N/S
Fairbanks	143	131	130	-9%	-1%
Fort Yukon	0	0	0	N/S	N/S
Galena	0	0	0	N/S	N/S
Glennallen	4	1	2	N/S	N/S
Haines	0	0	0	N/S	N/S
Homer	18	12	12	-33%	0%
Hoonah	0	0	0	N/S	N/S
Hooper Bay	0	0	0	N/S	N/S
Juneau	45	23	40	-11%	74%
Kenai	82	77	99	21%	29%
Ketchikan	25	33	15	-40%	-55%
Kodiak	22	13	2	N/S	N/S
Kotzebue	10	5	8	N/S	N/S
Naknek	3	1	1	N/S	N/S
Nenana	0	0	0	N/S	N/S
Nome	3	6	5	N/S	N/S
Palmer	201	169	201	0%	19%
Petersburg	4	10	3	N/S	N/S
Prince of Wales	1	4	9	N/S	N/S
Sand Point	0	0	0	N/S	N/S
Seward	5	4	4	N/S	N/S
Sitka	7	13	8	N/S	N/S
Skagway	0	0	0	N/S	N/S
St. Mary's ¹	1	0	0	N/S	N/S
St. Paul	0	0	0	N/S	N/S
Tok	3	1	0	N/S	N/S
Unalakleet	0	0	0	N/S	N/S
Unalaska	0	0	0	N/S	N/S
Utqiagvik	8	1	6	N/S	N/S
Valdez	12	4	2	N/S	N/S
Wrangell	7	3	2	N/S	N/S
Yakutat	0	0	0	N/S	N/S
Total	1,111	936	994	-11%	6%
1st District	89	86	77	-13%	-10%
2nd District	21	12	19	-10%	58%
3rd District	850	699	760	-11%	9%
4th District	151	139	138	-9%	-1%

N/S: Numbers 10 or less are not compared statistically.

1. St. Mary's court closed in 2016. Records for filings from the venue are still maintained separately.

**Table 4.20. Superior Court General Civil Case Filings
FY 20 – FY 22**

Court	FY 20	FY 21	FY 22	Change	
				FY 20 to FY 22	FY 21 to FY 22
Anchorage	1,229	1,146	1,101	-10%	-4%
Angoon	0	0	0	N/S	N/S
Aniak	0	0	0	N/S	N/S
Bethel	72	43	44	-39%	2%
Cordova	7	3	3	N/S	N/S
Delta Junction	2	3	3	N/S	N/S
Dillingham	13	10	11	-15%	N/S
Emmonak	0	0	0	N/S	N/S
Fairbanks	276	266	309	12%	16%
Fort Yukon	0	0	1	N/S	N/S
Galena	1	1	0	N/S	N/S
Glennallen	5	4	4	N/S	N/S
Haines	0	0	0	N/S	N/S
Homer	34	42	25	-26%	-40%
Hoonah	0	0	0	N/S	N/S
Hooper Bay	0	0	0	N/S	N/S
Juneau	125	127	153	22%	20%
Kenai	118	113	134	14%	19%
Ketchikan	35	40	51	46%	28%
Kodiak	31	24	27	-13%	13%
Kotzebue	28	14	22	-21%	57%
Naknek	4	1	1	N/S	N/S
Nenana	1	1	4	N/S	N/S
Nome	22	21	16	-27%	-24%
Palmer	285	274	266	-7%	-3%
Petersburg	9	5	16	N/S	N/S
Prince of Wales	9	7	6	N/S	N/S
Sand Point	2	1	0	N/S	N/S
Seward	10	11	10	N/S	N/S
Sitka	32	29	22	-31%	-24%
Skagway	0	1	0	N/S	N/S
St. Mary's ¹	0	0	0	N/S	N/S
St. Paul	0	0	0	N/S	N/S
Tok	2	0	4	N/S	N/S
Unalakleet	0	0	0	N/S	N/S
Unalaska	7	6	14	N/S	N/S
Utqiagvik	31	24	38	23%	58%
Valdez	14	11	11	-21%	0%
Wrangell	3	6	3	N/S	N/S
Yakutat	0	0	0	N/S	N/S
Total	2,407	2,234	2,299	-4%	3%
1st District	213	215	251	18%	17%
2nd District	81	59	76	-6%	29%
3rd District	1,759	1,646	1,607	-9%	-2%
4th District	354	314	365	3%	16%

N/S: Numbers 10 or less are not compared statistically.

1. St. Mary's court closed in 2016. Records for filings from the venue are still maintained separately.

**Table 4.21. Superior Court General Civil Filings by Case Type
FY 22**

Court	Adminis- trative review	Debt/ contract	Tort	Real property/ eviction	Post- conviction relief	Other	Total
Anchorage	98	84	295	58	28	538	1,101
Angoon	0	0	0	0	0	0	0
Aniak	0	0	0	0	0	0	0
Bethel	0	1	9	1	5	28	44
Cordova	2	0	0	0	0	1	3
Delta Junction	0	0	0	1	0	2	3
Dillingham	1	1	2	0	2	5	11
Emmonak	0	0	0	0	0	0	0
Fairbanks	13	18	46	29	7	196	309
Fort Yukon	0	0	0	0	0	1	1
Galena	0	0	0	0	0	0	0
Glennallen	0	0	0	0	0	4	4
Haines	0	0	0	0	0	0	0
Homer	1	1	4	2	0	17	25
Hoonah	0	0	0	0	0	0	0
Hooper Bay	0	0	0	0	0	0	0
Juneau	24	10	21	14	4	80	153
Kenai	9	8	41	10	4	62	134
Ketchikan	0	4	7	4	1	35	51
Kodiak	4	0	3	3	0	17	27
Kotzebue	0	0	2	2	1	17	22
Naknek	1	0	0	0	0	0	1
Nenana	0	0	0	3	0	1	4
Nome	1	0	4	1	1	9	16
Palmer	18	20	60	25	8	135	266
Petersburg	2	0	2	5	2	5	16
Prince of Wales	0	0	0	1	0	5	6
Sand Point	0	0	0	0	0	0	0
Seward	2	0	3	0	0	5	10
Sitka	3	0	3	0	0	16	22
Skagway	0	0	0	0	0	0	0
St. Mary's ¹	0	0	0	0	0	0	0
St. Paul	0	0	0	0	0	0	0
Tok	0	0	1	0	0	3	4
Unalakleet	0	0	0	0	0	0	0
Unalaska	0	3	10	0	0	1	14
Utqiagvik	2	2	9	1	0	24	38
Valdez	0	0	1	5	1	4	11
Wrangell	0	0	0	1	0	2	3
Yakutat	0	0	0	0	0	0	0
Total	181	152	523	166	64	1,213	2,299
% of total	7.9	6.6	22.7	7.2	2.8	52.8	100.0
1st District	29	14	33	25	7	143	251
2nd District	3	2	15	4	2	50	76
3rd District	136	117	419	103	43	789	1,607
4th District	13	19	56	34	12	231	365

1. St. Mary's court closed in 2016. Records for filings from the venue are still maintained separately.

**Table 4.22. Superior Court General Civil Case Types
FY 22**

Administrative Review	Eviction/Real Property
Administrative Appeal	Foreclosure
Appeal from District Court	Quiet Title
Petition for Review	Condemnation
	Forcible Entry and Detainer
	Real Estate Matter
Debt/Contract	Application for Post-conviction Relief
Debt — General	
Other Contract	
Tort	Other
Personal Injury — Auto	Change of Name
Personal Injury — Other	Election Contest or Recount Appeal
Wrongful Death	Injunctive Relief
Property Damage — Auto	Habeas Corpus
Property Damage — Other	Registration of Foreign Judgment
Medical Malpractice	Coroner
Legal Malpractice	Order to Show Cause
Other Malpractice	Contempt
	Other

**Table 4.23. Superior Court General Civil Case Dispositions
FY 20 – FY 22**

Court	FY 20	FY 21	FY 22	Change	
				FY 20 to FY 22	FY 21 to FY 22
Anchorage	1,161	1,085	1,140	-2%	5%
Angoon	0	0	0	N/S	N/S
Aniak	0	0	0	N/S	N/S
Bethel	60	45	39	-35%	-13%
Cordova	7	3	4	N/S	N/S
Delta Junction	3	2	3	N/S	N/S
Dillingham	13	10	11	-15%	N/S
Emmonak	0	0	0	N/S	N/S
Fairbanks	248	257	292	18%	14%
Fort Yukon	0	0	1	N/S	N/S
Galena	1	1	0	N/S	N/S
Glennallen	7	3	4	N/S	N/S
Haines	0	0	0	N/S	N/S
Homer	29	34	37	28%	9%
Hoonah	0	0	0	N/S	N/S
Hooper Bay	0	0	0	N/S	N/S
Juneau	103	131	147	43%	12%
Kenai	131	125	124	-5%	-1%
Ketchikan	39	31	55	41%	77%
Kodiak	36	14	28	-22%	100%
Kotzebue	24	13	21	-12%	62%
Naknek	2	3	0	N/S	N/S
Nenana	3	1	1	N/S	N/S
Nome	13	21	15	15%	-29%
Palmer	231	235	256	11%	9%
Petersburg	12	4	11	-8%	N/S
Prince of Wales	8	5	10	N/S	N/S
Sand Point	1	1	1	N/S	N/S
Seward	9	13	6	N/S	N/S
Sitka	32	25	29	-9%	16%
Skagway	0	0	0	N/S	N/S
St. Mary's ¹	0	0	0	N/S	N/S
St. Paul	0	0	0	N/S	N/S
Tok	0	4	3	N/S	N/S
Unalakleet	0	0	0	N/S	N/S
Unalaska	11	2	11	0%	N/S
Utqiagvik	22	13	34	55%	162%
Valdez	15	7	11	-27%	N/S
Wrangell	2	6	4	N/S	N/S
Yakutat	0	0	0	N/S	N/S
Total	2,223	2,094	2,298	3%	10%
1st District	196	202	256	31%	27%
2nd District	59	47	70	19%	49%
3rd District	1,653	1,535	1,633	-1%	6%
4th District	315	310	339	8%	9%

N/S: Numbers 10 or less are not compared statistically.

1. St. Mary's court closed in 2016. Records for filings from the venue are still maintained separately.

**Table 4.24. Superior Court General Civil Case Dispositions
by Manner of Disposition
FY 22**

Court	Stage of disposition						Total
	Dismiss/ settle	Default judgment	Summary judgment	Court trial	Jury trial	Other	
Anchorage	583	23	54	10	0	470	1,140
Angoon	0	0	0	0	0	0	0
Aniak	0	0	0	0	0	0	0
Bethel	11	0	0	0	0	28	39
Cordova	3	0	0	0	0	1	4
Delta Junction	1	0	0	0	0	2	3
Dillingham	0	1	0	0	0	10	11
Emmonak	0	0	0	0	0	0	0
Fairbanks	111	7	14	0	0	160	292
Fort Yukon	0	0	0	0	0	1	1
Galena	0	0	0	0	0	0	0
Glennallen	1	0	1	0	0	2	4
Haines	0	0	0	0	0	0	0
Homer	13	3	2	0	0	19	37
Hoonah	0	0	0	0	0	0	0
Hooper Bay	0	0	0	0	0	0	0
Juneau	55	1	11	2	0	78	147
Kenai	54	1	6	4	0	59	124
Ketchikan	16	1	2	3	0	33	55
Kodiak	12	1	0	0	0	15	28
Kotzebue	6	2	1	1	0	11	21
Naknek	0	0	0	0	0	0	0
Nenana	0	0	0	0	0	1	1
Nome	9	1	0	0	0	5	15
Palmer	114	12	6	6	0	118	256
Petersburg	3	1	2	0	0	5	11
Prince of Wales	5	0	1	0	0	4	10
Sand Point	0	0	0	0	0	1	1
Seward	2	0	0	0	0	4	6
Sitka	11	0	2	0	0	16	29
Skagway	0	0	0	0	0	0	0
St. Mary's ¹	0	0	0	0	0	0	0
St. Paul	0	0	0	0	0	0	0
Tok	1	0	0	0	0	2	3
Unalakleet	0	0	0	0	0	0	0
Unalaska	2	0	1	0	0	8	11
Utqiagvik	15	1	1	0	0	17	34
Valdez	4	0	0	0	0	7	11
Wrangell	0	0	1	0	0	3	4
Yakutat	0	0	0	0	0	0	0
Total	1,032	55	105	26	0	1,080	2,298
% of total	44.9	2.4	4.6	1.1	0.0	47.0	100.0
1st District	90	3	19	5	0	139	256
2nd District	30	4	2	1	0	33	70
3rd District	788	41	70	20	0	714	1,633
4th District	124	7	14	0	0	194	339

Note: Due to the covid pandemic, jury trials were suspended for various periods at various locations throughout FY22.

1. St. Mary's court closed in 2016. Records for filings from the venue are still maintained separately.

**Table 4.25. CINA Case Filings
FY 20 – FY 22**

Court	FY 20	FY 21	FY 22	Change	
				FY 20 to FY 22	FY 21 to FY 22
Anchorage	1,043	924	780	-25%	-16%
Angoon	0	0	0	N/S	N/S
Aniak	6	0	3	N/S	N/S
Bethel	148	151	159	7%	5%
Cordova	0	0	7	N/S	N/S
Delta Junction	0	0	0	N/S	N/S
Dillingham	51	82	68	33%	-17%
Emmonak	18	16	21	17%	31%
Fairbanks	381	335	222	-42%	-34%
Fort Yukon	0	0	0	N/S	N/S
Galena	0	0	0	N/S	N/S
Glennallen	14	15	28	100%	87%
Haines	0	0	0	N/S	N/S
Homer	17	29	21	24%	-28%
Hoonah	0	0	0	N/S	N/S
Hooper Bay	0	3	6	N/S	N/S
Juneau	84	79	85	1%	8%
Kenai	144	102	96	-33%	-6%
Ketchikan	32	72	54	69%	-25%
Kodiak	47	55	25	-47%	-55%
Kotzebue	62	55	94	52%	71%
Naknek	12	12	7	N/S	N/S
Nenana	0	0	0	N/S	N/S
Nome	78	61	40	-49%	-34%
Palmer	426	446	377	-12%	-15%
Petersburg	3	4	5	N/S	N/S
Prince of Wales	38	18	7	N/S	N/S
Sand Point	0	0	0	N/S	N/S
Seward	10	7	16	N/S	N/S
Sitka	29	8	24	-17%	N/S
Skagway	0	0	0	N/S	N/S
St. Mary's ¹	6	18	18	N/S	0%
St. Paul	0	0	3	N/S	N/S
Tok	0	1	0	N/S	N/S
Unalakleet	0	0	0	N/S	N/S
Unalaska	0	2	0	N/S	N/S
Utqiagvik	58	22	56	-3%	155%
Valdez	5	13	11	N/S	-15%
Wrangell	2	0	0	N/S	N/S
Yakutat	0	0	0	N/S	N/S
Total	2,714	2,530	2,233	-18%	-12%
1st District	188	181	175	-7%	-3%
2nd District	198	138	190	-4%	38%
3rd District	1,769	1,687	1,439	-19%	-15%
4th District	559	524	429	-23%	-18%

N/S: Numbers 10 or less are not compared statistically.

1. St. Mary's court closed in 2016. Records for filings from the venue are still maintained separately.

**Table 4.26. Delinquency Case Filings
FY 20 – FY 22**

Court	FY 20	FY 21	FY 22	Change	
				FY 20 to FY 22	FY 21 to FY 22
Anchorage	282	216	254	-10%	18%
Angoon	0	0	0	N/S	N/S
Aniak	6	4	4	N/S	N/S
Bethel	19	26	38	100%	46%
Cordova	0	0	3	N/S	N/S
Delta Junction	0	0	1	N/S	N/S
Dillingham	10	7	7	N/S	N/S
Emmonak	4	6	4	N/S	N/S
Fairbanks	34	36	29	-15%	-19%
Fort Yukon	0	3	0	N/S	N/S
Galena	1	1	0	N/S	N/S
Glennallen	3	2	1	N/S	N/S
Haines	0	0	0	N/S	N/S
Homer	12	3	9	N/S	N/S
Hoonah	0	0	0	N/S	N/S
Hooper Bay	14	7	3	N/S	N/S
Juneau	26	30	41	58%	37%
Kenai	56	22	37	-34%	68%
Ketchikan	15	8	13	-13%	N/S
Kodiak	16	2	13	-19%	N/S
Kotzebue	12	14	6	N/S	N/S
Naknek	0	1	2	N/S	N/S
Nenana	0	0	2	N/S	N/S
Nome	25	13	19	-24%	46%
Palmer	98	48	71	-28%	48%
Petersburg	0	1	0	N/S	N/S
Prince of Wales	0	1	2	N/S	N/S
Sand Point	0	0	0	N/S	N/S
Seward	5	3	2	N/S	N/S
Sitka	6	10	18	N/S	N/S
Skagway	0	0	0	N/S	N/S
St. Mary's ¹	7	1	4	N/S	N/S
St. Paul	0	0	2	N/S	N/S
Tok	1	1	1	N/S	N/S
Unalakleet	0	0	0	N/S	N/S
Unalaska	1	2	0	N/S	N/S
Utqiagvik	11	3	14	27%	N/S
Valdez	1	2	1	N/S	N/S
Wrangell	0	0	0	N/S	N/S
Yakutat	0	0	0	N/S	N/S
Total	665	473	601	-10%	27%
1st District	47	50	74	57%	48%
2nd District	48	30	39	-19%	30%
3rd District	484	308	402	-17%	31%
4th District	86	85	86	0%	1%

N/S: Numbers 10 or less are not compared statistically.

1. St. Mary's court closed in 2016. Records for filings from the venue are still maintained separately.

**Table 4.27. CINA and Delinquency Filings by Case Type
FY 22**

Court	Petitions to terminate parental rights			Petitions to revoke probation		
	Child in Need of Aid		Total	Delinquency		Total
Anchorage	487	293	780	183	71	254
Angeon	0	0	0	0	0	0
Aniak	3	0	3	2	2	4
Bethel	108	51	159	34	4	38
Cordova	7	0	7	3	0	3
Delta Junction	0	0	0	1	0	1
Dillingham	46	22	68	3	4	7
Emmonak	15	6	21	4	0	4
Fairbanks	159	63	222	22	7	29
Fort Yukon	0	0	0	0	0	0
Galena	0	0	0	0	0	0
Glennallen	16	12	28	0	1	1
Haines	0	0	0	0	0	0
Homer	7	14	21	7	2	9
Hoonah	0	0	0	0	0	0
Hooper Bay	6	0	6	3	0	3
Juneau	67	18	85	31	10	41
Kenai	42	54	96	36	1	37
Ketchikan	26	28	54	10	3	13
Kodiak	19	6	25	10	3	13
Kotzebue	40	54	94	5	1	6
Naknek	6	1	7	2	0	2
Nenana	0	0	0	2	0	2
Nome	33	7	40	19	0	19
Palmer	224	153	377	58	13	71
Petersburg	5	0	5	0	0	0
Prince of Wales	5	2	7	2	0	2
Sand Point	0	0	0	0	0	0
Seward	8	8	16	1	1	2
Sitka	24	0	24	11	7	18
Skagway	0	0	0	0	0	0
St. Mary's ¹	16	2	18	4	0	4
St. Paul	3	0	3	2	0	2
Tok	0	0	0	1	0	1
Unalakleet	0	0	0	0	0	0
Unalaska	0	0	0	0	0	0
Utqiagvik	56	0	56	14	0	14
Valdez	6	5	11	1	0	1
Wrangell	0	0	0	0	0	0
Yakutat	0	0	0	0	0	0
Total	1,434	799	2,233	471	130	601
% of total	64.2	35.8	100.0	78.4	21.6	100.0
1st District	127	48	175	54	20	74
2nd District	129	61	190	38	1	39
3rd District	871	568	1,439	306	96	402
4th District	307	122	429	73	13	86

1. St. Mary's court closed in 2016. Records for filings from the venue are still maintained separately.



Tall Jacob's ladder, Bishop's Beach, Homer (Third Judicial District)



Petersburg small boat harbor (First Judicial District)

**Table 5.01. Total District Court Case Filings
FY 20 – FY 22**

Court	FY 20	FY 21	FY 22	Change	
				FY 20 to FY 22	FY 21 to FY 22
Anchorage¹	42,396	28,716	36,006	-15%	25%
Angeon	20	9	9	N/S	N/S
Aniak	171	67	73	-57%	9%
Bethel	1,814	1,346	1,103	-39%	-18%
Cordova	130	134	124	-5%	-7%
Delta Junction	366	309	786	115%	154%
Dillingham	737	580	461	-37%	-21%
Emmonak	289	131	118	-59%	-10%
Fairbanks	11,444	9,826	8,717	-24%	-11%
Fort Yukon	62	74	56	-10%	-24%
Galena	59	63	50	-15%	-21%
Glennallen	421	435	611	45%	40%
Haines	208	117	125	-40%	7%
Homer	1,699	1,333	1,616	-5%	21%
Hoonah	69	59	42	-39%	-29%
Hooper Bay	224	141	96	-57%	-32%
Juneau	4,416	3,959	3,646	-17%	-8%
Kenai	7,297	6,787	7,443	2%	10%
Ketchikan	1,874	1,659	1,598	-15%	-4%
Kodiak	1,195	851	960	-20%	13%
Kotzebue	659	528	487	-26%	-8%
Naknek	321	307	307	-4%	0%
Nenana	2,874	2,417	2,383	-17%	-1%
Nome	1,213	1,305	726	-40%	-44%
Palmer	12,081	13,122	11,527	-5%	-12%
Petersburg	298	323	237	-20%	-27%
Prince of Wales	638	715	730	14%	2%
Sand Point	109	43	46	-58%	7%
Seward	1,773	1,335	1,941	9%	45%
Sitka	871	742	557	-36%	-25%
Skagway	13	22	26	100%	18%
St. Mary's ²	193	192	149	-23%	-22%
St. Paul	12	15	11	-8%	-27%
Tok	338	542	281	-17%	-48%
Unalakleet	104	154	150	44%	-3%
Unalaska	316	231	266	-16%	15%
Utqiagvik	766	607	587	-23%	-3%
Valdez	340	236	245	-28%	4%
Wrangell	160	149	140	-12%	-6%
Yakutat	71	37	39	-45%	5%
Total	98,041	79,618	84,475	-14%	6%
1st District	8,638	7,791	7,149	-17%	-8%
2nd District	2,742	2,594	1,950	-29%	-25%
3rd District	68,827	54,125	61,564	-11%	14%
4th District	17,834	15,108	13,812	-23%	-9%

N/S: Numbers 10 or less are not compared statistically.

1. From January 1, 2019 – June 30, 2019 (FY19), the Anchorage Police Department did not file unpaid citations with the court system for entry of default judgment. The FY20 figures include filings for the eighteen-month period from January 1, 2019 – June 30, 2020. From April 30, 2021 – June 30 2021, electronic reporting of minor offense citations was suspended. The citations from this period have been included in the FY22 numbers.

2. St. Mary's court closed in 2016. Records for filings from the venue are still maintained separately.

**Table 5.02. Total District Court Case Dispositions
FY 20 – FY 22**

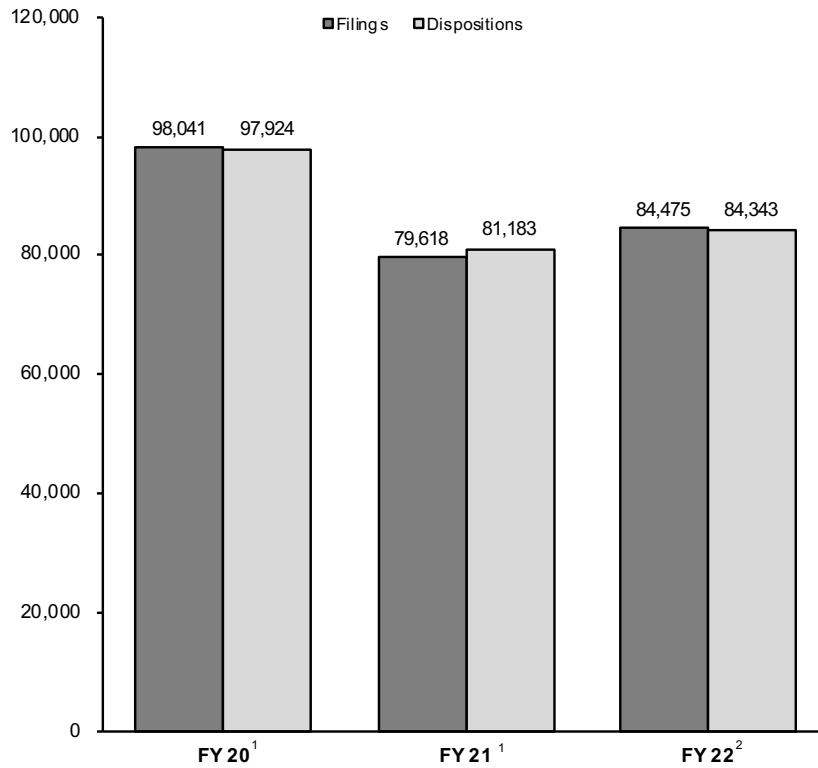
Court	FY 20	FY 21	FY 22	Change	
				FY 20 to FY 22	FY 21 to FY 22
Anchorage¹	43,944	29,222	35,722	-19%	22%
Angeon	13	10	9	N/S	N/S
Aniak	141	87	71	-50%	-18%
Bethel	1,621	1,515	1,158	-29%	-24%
Cordova	140	127	158	13%	24%
Delta Junction	355	311	747	110%	140%
Dillingham	639	687	496	-22%	-28%
Emmonak	236	171	107	-55%	-37%
Fairbanks	10,630	10,710	8,752	-18%	-18%
Fort Yukon	46	67	76	65%	13%
Galena	60	59	48	-20%	-19%
Glennallen	434	385	602	39%	56%
Haines	201	134	100	-50%	-25%
Homer	1,597	1,376	1,525	-5%	11%
Hoonah	65	62	41	-37%	-34%
Hooper Bay	190	178	107	-44%	-40%
Juneau	4,093	3,879	3,821	-7%	-1%
Kenai	7,460	7,337	7,116	-5%	-3%
Ketchikan	1,857	1,627	1,535	-17%	-6%
Kodiak	1,353	920	949	-30%	3%
Kotzebue	573	398	523	-9%	31%
Naknek	304	264	315	4%	19%
Nenana	3,000	2,380	2,428	-19%	2%
Nome	939	1,277	861	-8%	-33%
Palmer	12,234	12,403	11,766	-4%	-5%
Petersburg	312	300	258	-17%	-14%
Prince of Wales	629	703	776	23%	10%
Sand Point	77	56	48	-38%	-14%
Seward	1,726	1,566	1,764	2%	13%
Sitka	808	853	586	-27%	-31%
Skagway	17	22	24	41%	9%
St. Mary's ²	143	183	165	15%	-10%
St. Paul	12	2	12	0%	N/S
Tok	316	590	293	-7%	-50%
Unalakleet	121	107	105	-13%	-2%
Unalaska	354	263	219	-38%	-17%
Utqiagvik	680	544	663	-2%	22%
Valdez	394	227	220	-44%	-3%
Wrangell	142	151	142	0%	-6%
Yakutat	68	30	35	-49%	17%
Total	97,924	81,183	84,343	-14%	4%
1st District	8,205	7,771	7,327	-11%	-6%
2nd District	2,313	2,326	2,152	-7%	-7%
3rd District	70,668	54,835	60,912	-14%	11%
4th District	16,738	16,251	13,952	-17%	-14%

N/S: Numbers 10 or less are not compared statistically.

1. From January 1, 2019 – June 30, 2019 (FY19), the Anchorage Police Department did not file unpaid citations with the court system for entry of default judgment. The FY20 figures include filings for the eighteen-month period from January 1, 2019 – June 30, 2020. From April 30, 2021 – June 30 2021, electronic reporting of minor offense citations was suspended. The citations from this period have been included in the FY22 numbers.

2. St. Mary's court closed in 2016. Records for filings from the venue are still maintained separately.

**Figure 5.01. District Court Filing and Disposition Trends
FY 20 – FY 22**



1. From January 1, 2019 – June 30, 2019 (FY19), the Anchorage Police Department did not file unpaid citations with the court system for entry of default judgment. The FY20 figures include filings for the eighteen-month period from January 1, 2019 – June 30, 2020. From April 30, 2021 – June 30 2021, electronic reporting of minor offense citations was suspended. The citations from this period have been included in the FY22 numbers.

**Table 5.03. District Court Clearance Rates
FY 21 – FY 22**

Court	Non-minor offense filings						Clearance rates	
	Non-minor offense filings		Minor offense filings ¹		Total filings		FY 21	FY 22
	FY 22	Change from FY 21	FY 22	Change from FY 21	FY 22	Change from FY 21		
Anchorage¹	14,465	5%	21,541	44%	36,006	25%	102%	99%
Angoon	9	N/S	0	N/S	9	N/S	N/S	N/S
Aniak	54	-7%	19	N/S	73	9%	130%	97%
Bethel	1,014	-19%	89	-8%	1,103	-18%	113%	105%
Cordova	54	-4%	70	-10%	124	-7%	95%	127%
Delta Junction	95	-1%	691	224%	786	154%	101%	95%
Dillingham	374	-13%	87	-41%	461	-21%	118%	108%
Emmonak	113	-10%	5	N/S	118	-10%	131%	91%
Fairbanks	4,168	-12%	4,549	-10%	8,717	-11%	109%	100%
Fort Yukon	53	-16%	3	N/S	56	-24%	91%	136%
Galena	46	-16%	4	N/S	50	-21%	94%	96%
Glennallen	116	-24%	495	75%	611	40%	89%	99%
Haines	52	-9%	73	22%	125	7%	115%	80%
Homer	661	4%	955	37%	1,616	21%	103%	94%
Hoonah	20	-41%	22	-12%	42	-29%	105%	98%
Hooper Bay	94	-32%	2	N/S	96	-32%	126%	111%
Juneau	1,774	-16%	1,872	2%	3,646	-8%	98%	105%
Kenai	1,933	-11%	5,510	20%	7,443	10%	108%	96%
Ketchikan	1,187	-3%	411	-5%	1,598	-4%	98%	96%
Kodiak	362	-6%	598	28%	960	13%	108%	99%
Kotzebue	440	-7%	47	-15%	487	-8%	75%	107%
Naknek	214	-5%	93	15%	307	0%	86%	103%
Nenana	98	-6%	2,285	-1%	2,383	-1%	98%	102%
Nome	558	-40%	168	-55%	726	-44%	98%	119%
Palmer	4,305	-7%	7,222	-15%	11,527	-12%	95%	102%
Petersburg	133	-33%	104	-15%	237	-27%	93%	109%
Prince of Wales	347	-2%	383	6%	730	2%	98%	106%
Sand Point	38	3%	8	N/S	46	7%	130%	104%
Seward	317	30%	1,624	49%	1,941	45%	117%	91%
Sitka	299	-32%	258	-15%	557	-25%	115%	105%
Skagway	20	5%	6	N/S	26	18%	100%	92%
St. Mary's ²	146	-24%	3	N/S	149	-22%	95%	111%
St. Paul	10	N/S	1	N/S	11	-27%	N/S	109%
Tok	104	-31%	177	-55%	281	-48%	109%	104%
Unalakleet	137	14%	13	-62%	150	-3%	69%	70%
Unalaska	87	-24%	179	53%	266	15%	114%	82%
Utqiagvik	518	-5%	69	13%	587	-3%	90%	113%
Valdez	153	9%	92	-3%	245	4%	96%	90%
Wrangell	81	-16%	59	13%	140	-6%	101%	101%
Yakutat	22	16%	17	-6%	39	5%	81%	90%
Total	34,671	-5%	49,804	16%	84,475	6%	102%	100%
1st District	3,944	-14%	3,205	0%	7,149	-8%	100%	102%
2nd District	1,653	-20%	297	-44%	1,950	-25%	90%	110%
3rd District	23,089	0%	38,475	24%	61,564	14%	101%	99%
4th District	5,985	-14%	7,827	-4%	13,812	-9%	108%	101%

Clearance rate measures whether a court is keeping up with its incoming caseload. Courts aspire to clear (i.e., dispose of) at least as many cases as have been filed in a period by having a clearance rate of 100 percent or higher.

N/S: Numbers 10 or less are not compared statistically.

1. From January 1, 2019 – June 30, 2019 (FY19), the Anchorage Police Department did not file unpaid citations with the court system for entry of default judgment. The FY20 figures include filings for the eighteen-month period from January 1, 2019 – June 30, 2020. From April 30, 2021 – June 30 2021, electronic reporting of minor offense citations was suspended. The citations from this period have been included in the FY22 numbers.

2. St. Mary's court closed in 2016. Records for filings from the venue are still maintained separately.

**Table 5.04. District Court Filings by Case Type
FY 22**

Court	Misdemeanor	Minor offense ¹	Civil			Total
			Small claims	Civil protective orders ²	General civil	
Anchorage	6,736	21,541	1,571	3,148	3,010	36,006
Angeon	4	0	0	3	2	9
Aniak	35	19	0	16	3	73
Bethel	669	89	13	291	41	1,103
Cordova	31	70	2	12	9	124
Delta Junction	33	691	8	34	20	786
Dillingham	243	87	9	108	14	461
Emmonak	76	5	2	34	1	118
Fairbanks	2,244	4,549	580	666	678	8,717
Fort Yukon	44	3	4	5	0	56
Galena	27	4	2	17	0	50
Glennallen	79	495	6	24	7	611
Haines	30	73	5	10	7	125
Homer	428	955	45	128	60	1,616
Hoonah	11	22	0	7	2	42
Hooper Bay	53	2	2	39	0	96
Juneau	1,055	1,872	150	329	240	3,646
Kenai	1,094	5,510	197	368	274	7,443
Ketchikan	706	411	160	210	111	1,598
Kodiak	194	598	30	87	51	960
Kotzebue	305	47	11	101	23	487
Naknek	186	93	0	15	13	307
Nenana	60	2,285	10	17	11	2,383
Nome	395	168	10	143	10	726
Palmer	1,814	7,222	912	963	616	11,527
Petersburg	69	104	14	35	15	237
Prince of Wales	260	383	5	68	14	730
Sand Point	25	8	0	11	2	46
Seward	236	1,624	11	38	32	1,941
Sitka	147	258	50	55	47	557
Skagway	7	6	3	7	3	26
St. Mary's ³	123	3	0	23	0	149
St. Paul	5	1	0	5	0	11
Tok	66	177	12	23	3	281
Unalakleet	120	13	4	13	0	150
Unalaska	62	179	2	15	8	266
Utqiagvik	271	69	15	218	14	587
Valdez	81	92	34	22	16	245
Wrangell	43	59	9	22	7	140
Yakutat	9	17	8	3	2	39
Total	18,076	49,804	3,896	7,333	5,366	84,475
% of total	21.4	59.0	4.6	8.7	6.3	100.0
1st District	2,341	3,205	404	749	450	7,149
2nd District	1,091	297	40	475	47	1,950
3rd District	11,214	38,475	2,819	4,944	4,112	61,564
4th District	3,430	7,827	633	1,165	757	13,812

1. From April 30, 2021 – June 30, 2021, electronic reporting of minor offense citations was suspended.

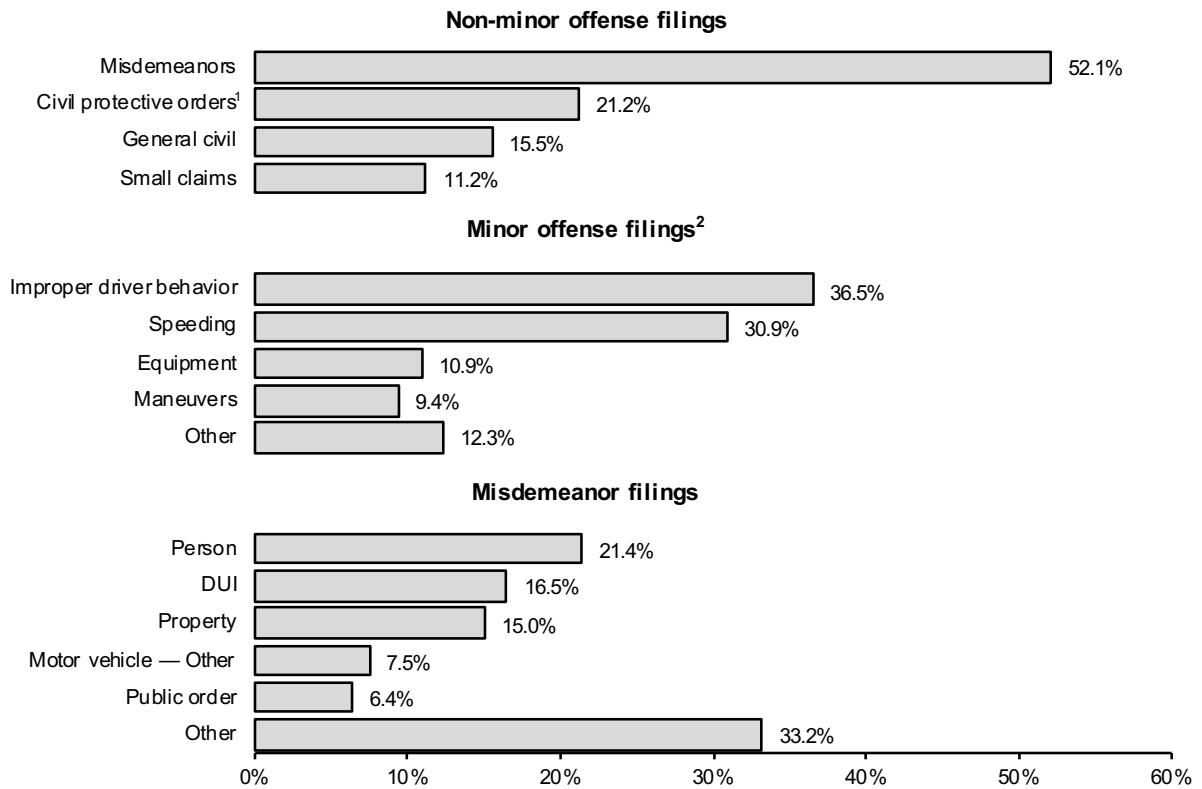
The citations from this period have been included in the FY22 numbers.

2. The Civil Protective Order case group includes petitions for domestic violence, stalking, and sexual assault protective orders.

3. St. Mary's court closed in 2016. Records for filings from the venue are still maintained separately.

**Figure 5.02. Composition of District Court Case Filings
FY 22**

Percentages within categories.

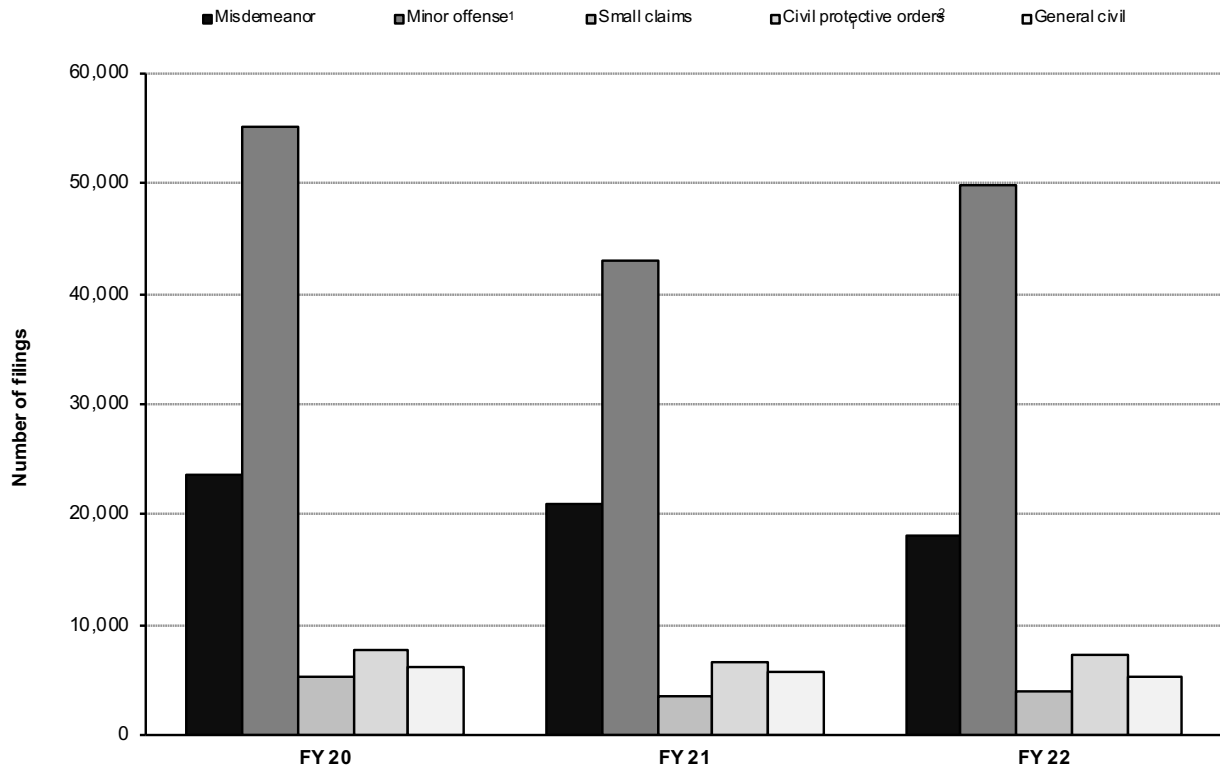


This chart analyzes the composition of cases filed in District Court during FY22. Misdemeanor cases represent approximately 52.1% of the non-minor offense caseload. Approximately 24.4% of all misdemeanor cases involve driving while intoxicated or another criminal traffic violation (for example, driving with suspended license).

1. The Civil Protective Order case group includes petitions for domestic violence, stalking and sexual assault protective orders.

2. From April 30, 2021 – June 30, 2021, electronic reporting of minor offense citations was suspended. The citations from this period have been included in the FY22 numbers.

**Figure 5.03. District Court Filing Trends by Case Type
FY 20 – FY 22**



Filing Type	FY 20	FY 21	FY 22	FY 20 to FY 22 change	FY 21 to FY 22 change
Misdemeanor	23,591	20,994	18,076	-23%	-14%
Minor offense ¹	55,125	42,940	49,804	-10%	16%
Small claims	5,303	3,422	3,896	-27%	14%
Civil protective orders ²	7,768	6,642	7,333	-6%	10%
General civil	6,254	5,620	5,366	-14%	-5%
Total	98,041	79,618	84,475	-14%	6%

1. From January 1, 2019 – June 30, 2019 (FY19), the Anchorage Police Department did not file unpaid citations with the court system for entry of default judgment. The FY20 figures include filings for the eighteen-month period from January 1, 2019 – June 30, 2020. From April 30, 2021 – June 30 2021, electronic reporting of minor offense citations was suspended. The citations from this period have been included in the FY22 numbers.

2. The Civil Protective Order case group includes petitions for domestic violence, stalking, and sexual assault protective orders.

**Table 5.05. District Court Dispositions by Case Type
FY 22**

Court	Misdemeanor	Minor offense ¹	Civil			Total
			Small claims	Civil protective orders ²	General civil	
Anchorage¹	6,970	21,550	1,342	3,069	2,791	35,722
Angoon	6	0	0	3	0	9
Aniak	34	16	1	18	2	71
Bethel	742	91	12	270	43	1,158
Cordova	50	80	3	12	13	158
Delta Junction	38	645	7	40	17	747
Dillingham	267	90	6	114	19	496
Emmonak	62	8	3	32	2	107
Fairbanks	2,466	4,474	480	639	693	8,752
Fort Yukon	61	5	3	6	1	76
Galena	23	4	2	16	3	48
Glennallen	107	455	8	20	12	602
Haines	18	60	3	10	9	100
Homer	417	884	40	119	65	1,525
Hoonah	13	16	0	10	2	41
Hooper Bay	69	1	0	37	0	107
Juneau	1,134	1,926	157	335	269	3,821
Kenai	1,168	5,153	166	361	268	7,116
Ketchikan	698	344	173	194	126	1,535
Kodiak	187	586	21	81	74	949
Kotzebue	318	61	9	103	32	523
Naknek	193	99	1	16	6	315
Nenana	78	2,311	8	18	13	2,428
Nome	529	163	11	143	15	861
Palmer	2,430	7,067	488	927	854	11,766
Petersburg	85	106	11	37	19	258
Prince of Wales	265	404	4	84	19	776
Sand Point	26	6	0	12	4	48
Seward	230	1,454	12	39	29	1,764
Sitka	182	270	52	47	35	586
Skagway	4	6	3	8	3	24
St. Mary's ³	138	4	1	22	0	165
St. Paul	7	2	0	3	0	12
Tok	80	179	8	23	3	293
Unalakleet	77	18	0	10	0	105
Unalaska	64	129	3	11	12	219
Utqiagvik	347	60	10	224	22	663
Valdez	104	63	17	20	16	220
Wrangell	31	61	20	20	10	142
Yakutat	5	18	6	3	3	35
Total	19,723	48,869	3,091	7,156	5,504	84,343
% of total	23.4	57.9	3.7	8.5	6.5	100.0
1st District	2,441	3,211	429	751	495	7,327
2nd District	1,271	302	30	480	69	2,152
3rd District	12,220	37,618	2,107	4,804	4,163	60,912
4th District	3,791	7,738	525	1,121	777	13,952

1. From April 30, 2021 – June 30, 2021, electronic reporting of minor offense citations was suspended.

The citations from this period have been included in the FY22 numbers.

2. The Civil Protective Order case group includes petitions for domestic violence, stalking, and sexual assault protective orders.

3. St. Mary's court closed in 2016. Records for filings from the venue are still maintained separately.

**Table 5.06. District Court Non-Minor Offense Case Filings
FY 20 – FY 22**

Court	FY 20	FY 21	FY 22	Change	
				FY 20 to FY 22	FY 21 to FY 22
Anchorage	18,153	13,803	14,465	-20%	5%
Angoon	16	9	9	N/S	N/S
Aniak	144	58	54	-62%	-7%
Bethel	1,630	1,249	1,014	-38%	-19%
Cordova	67	56	54	-19%	-4%
Delta Junction	107	96	95	-11%	-1%
Dillingham	459	432	374	-19%	-13%
Emmonak	269	126	113	-58%	-10%
Fairbanks	5,058	4,757	4,168	-18%	-12%
Fort Yukon	56	63	53	-5%	-16%
Galena	49	55	46	-6%	-16%
Glennallen	137	152	116	-15%	-24%
Haines	70	57	52	-26%	-9%
Homer	658	638	661	0%	4%
Hoonah	52	34	20	-62%	-41%
Hooper Bay	214	139	94	-56%	-32%
Juneau	2,332	2,117	1,774	-24%	-16%
Kenai	2,243	2,179	1,933	-14%	-11%
Ketchikan	1,288	1,227	1,187	-8%	-3%
Kodiak	572	385	362	-37%	-6%
Kotzebue	567	473	440	-22%	-7%
Naknek	247	226	214	-13%	-5%
Nenana	181	104	98	-46%	-6%
Nome	820	929	558	-32%	-40%
Palmer	4,622	4,628	4,305	-7%	-7%
Petersburg	195	200	133	-32%	-33%
Prince of Wales	358	355	347	-3%	-2%
Sand Point	71	37	38	-46%	3%
Seward	271	244	317	17%	30%
Sitka	496	439	299	-40%	-32%
Skagway	11	19	20	82%	5%
St. Mary's ¹	187	191	146	-22%	-24%
St. Paul	12	14	10	N/S	N/S
Tok	100	150	104	4%	-31%
Unalakleet	71	120	137	93%	14%
Unalaska	119	114	87	-27%	-24%
Utqiagvik	689	546	518	-25%	-5%
Valdez	195	141	153	-22%	9%
Wrangell	110	97	81	-26%	-16%
Yakutat	20	19	22	10%	16%
Total	42,916	36,678	34,671	-19%	-5%
1st District	4,948	4,573	3,944	-20%	-14%
2nd District	2,147	2,068	1,653	-23%	-20%
3rd District	27,826	23,049	23,089	-17%	0%
4th District	7,995	6,988	5,985	-25%	-14%

N/S: Numbers 10 or less are not compared statistically.

1. St. Mary's court closed in 2016. Records for filings from the venue are still maintained separately.

**Table 5.07. District Court Non-Minor Offense Case Dispositions
FY 20 – FY 22**

Court	FY 20	FY 21	FY 22	Change	
				FY 20 to FY 22	FY 21 to FY 22
Anchorage	17,625	13,696	14,172	-20%	3%
Anagoon	8	10	9	N/S	N/S
Aniak	116	76	55	-53%	-28%
Bethel	1,427	1,371	1,067	-25%	-22%
Cordova	66	50	78	18%	56%
Delta Junction	101	85	102	1%	20%
Dillingham	403	449	406	1%	-10%
Emmonak	219	165	99	-55%	-40%
Fairbanks	4,993	5,036	4,278	-14%	-15%
Fort Yukon	43	55	71	65%	29%
Galena	51	50	44	-14%	-12%
Glennallen	115	117	147	28%	26%
Haines	63	71	40	-37%	-44%
Homer	582	597	641	10%	7%
Hoonah	43	38	25	-42%	-34%
Hooper Bay	178	176	106	-40%	-40%
Juneau	2,154	2,028	1,895	-12%	-7%
Kenai	2,134	2,267	1,963	-8%	-13%
Ketchikan	1,283	1,165	1,191	-7%	2%
Kodiak	562	420	363	-35%	-14%
Kotzebue	497	344	462	-7%	34%
Naknek	221	195	216	-2%	11%
Nenana	172	124	117	-32%	-6%
Nome	674	737	698	4%	-5%
Palmer	4,269	3,666	4,699	10%	28%
Petersburg	201	187	152	-24%	-19%
Prince of Wales	359	341	372	4%	9%
Sand Point	48	50	42	-12%	-16%
Seward	215	297	310	44%	4%
Sitka	443	523	316	-29%	-40%
Skagway	14	19	18	29%	-5%
St. Mary's ¹	137	182	161	18%	-12%
St. Paul	12	2	10	N/S	N/S
Tok	102	148	114	12%	-23%
Unalakleet	103	80	87	-16%	9%
Unalaska	140	148	90	-36%	-39%
Utqiagvik	609	464	603	-1%	30%
Valdez	194	111	157	-19%	41%
Wrangell	107	96	81	-24%	-16%
Yakutat	18	14	17	-6%	21%
Total	40,701	35,650	35,474	-13%	0%
1st District	4,693	4,492	4,116	-12%	-8%
2nd District	1,883	1,625	1,850	-2%	14%
3rd District	26,586	22,065	23,294	-12%	6%
4th District	7,539	7,468	6,214	-18%	-17%

N/S: Numbers 10 or less are not compared statistically.

1. St. Mary's court closed in 2016. Records for filings from the venue are still maintained separately.

**Table 5.08. Misdemeanor Case Filings
FY 20 – FY 22**

Court	FY 20	FY 21	FY 22	Change	
				FY 20 to FY 22	FY 21 to FY 22
Anchorage	8,088	6,805	6,736	-17%	-1%
Angoon	14	6	4	N/S	N/S
Aniak	71	43	35	-51%	-19%
Bethel	1,345	985	669	-50%	-32%
Cordova	54	40	31	-43%	-22%
Delta Junction	39	32	33	-15%	3%
Dillingham	344	314	243	-29%	-23%
Emmonak	225	104	76	-66%	-27%
Fairbanks	3,102	2,901	2,244	-28%	-23%
Fort Yukon	37	52	44	19%	-15%
Galena	26	24	27	4%	13%
Glennallen	98	121	79	-19%	-35%
Haines	36	26	30	-17%	15%
Homer	406	434	428	5%	-1%
Hoonah	37	12	11	-70%	-8%
Hooper Bay	172	105	53	-69%	-50%
Juneau	1,410	1,247	1,055	-25%	-15%
Kenai	1,445	1,440	1,094	-24%	-24%
Ketchikan	806	805	706	-12%	-12%
Kodiak	379	220	194	-49%	-12%
Kotzebue	377	329	305	-19%	-7%
Naknek	210	182	186	-11%	2%
Nenana	141	73	60	-57%	-18%
Nome	581	693	395	-32%	-43%
Palmer	2,198	2,251	1,814	-17%	-19%
Petersburg	123	124	69	-44%	-44%
Prince of Wales	260	254	260	0%	2%
Sand Point	64	33	25	-61%	-24%
Seward	198	193	236	19%	22%
Sitka	275	224	147	-47%	-34%
Skagway	4	8	7	N/S	N/S
St. Mary's ¹	151	159	123	-19%	-23%
St. Paul	10	14	5	N/S	N/S
Tok	64	116	66	3%	-43%
Unalakleet	60	108	120	100%	11%
Unalaska	90	86	62	-31%	-28%
Utqiagvik	439	304	271	-38%	-11%
Valdez	132	78	81	-39%	4%
Wrangell	72	42	43	-40%	2%
Yakutat	8	7	9	N/S	N/S
Total	23,591	20,994	18,076	-23%	-14%
1st District	3,045	2,755	2,341	-23%	-15%
2nd District	1,457	1,434	1,091	-25%	-24%
3rd District	13,716	12,211	11,214	-18%	-8%
4th District	5,373	4,594	3,430	-36%	-25%

N/S: Numbers 10 or less are not compared statistically.

1. St. Mary's court closed in 2016. Records for filings from the venue are still maintained separately.

**Table 5.09. Misdemeanor Filings by Case Type
FY 22**

Court	Person	Property	Drugs	Weapon	Public		Reckless driving	Motor	Protective	Fish & Game	Other	Total
					order	DUI		vehicle — other	order violation			
Anchorage	1,468	1,058	140	86	621	1,029	7	142	11	3	2,171	6,736
Anoon	3	0	0	0	0	0	0	0	0	0	1	4
Aniak	25	3	0	0	2	2	0	0	1	0	2	35
Bethel	238	38	4	5	50	52	1	5	8	6	262	669
Cordova	4	1	0	1	3	7	0	9	1	1	4	31
Delta Junction	8	1	0	0	1	7	1	1	0	9	5	33
Dillingham	98	39	0	0	16	26	2	2	6	36	18	243
Emmonak	43	1	0	0	3	19	0	0	1	0	9	76
Fairbanks	337	284	52	20	58	385	4	72	32	11	989	2,244
Fort Yukon	14	7	0	0	0	4	0	0	1	0	18	44
Galena	17	1	0	0	0	0	0	1	2	0	6	27
Glennallen	11	6	0	0	1	29	0	8	1	9	14	79
Haines	8	3	1	2	0	7	0	6	0	1	2	30
Homer	52	52	17	2	18	121	3	99	16	2	46	428
Hoonah	3	1	0	0	0	1	0	0	0	2	4	11
Hooper Bay	31	1	0	3	3	8	0	0	3	0	4	53
Juneau	151	259	9	7	70	142	4	204	0	3	206	1,055
Kenai	174	151	67	8	34	253	12	264	29	11	91	1,094
Ketchikan	79	76	15	4	54	68	3	56	13	3	335	706
Kodiak	36	30	8	3	5	31	4	29	1	17	30	194
Kotzebue	157	33	1	1	39	17	1	3	11	1	41	305
Naknek	25	8	1	1	4	26	1	5	0	89	26	186
Nenana	15	5	3	0	1	11	0	0	2	6	17	60
Nome	148	86	0	1	54	32	1	3	6	0	64	395
Palmer	359	416	77	20	46	450	14	271	35	16	110	1,814
Petersburg	17	12	0	1	2	6	0	12	2	6	11	69
Prince of Wales	31	10	5	1	8	34	1	44	5	1	120	260
Sand Point	4	3	0	2	2	9	0	1	0	4	0	25
Seward	32	19	12	2	13	63	2	64	10	0	19	236
Sitka	38	13	4	0	10	34	2	15	3	13	15	147
Skagway	1	2	0	0	0	0	0	0	2	0	2	7
St. Mary's ¹	61	10	0	1	4	18	0	0	1	0	28	123
St. Paul	3	2	0	0	0	0	0	0	0	0	0	5
Tok	19	7	4	0	0	11	0	1	1	1	22	66
Unalakleet	42	13	0	0	6	16	0	0	0	0	43	120
Unalaska	16	13	0	0	6	11	0	5	0	4	7	62
Utqiagvik	86	27	4	4	14	12	1	2	21	1	99	271
Valdez	16	9	3	0	4	22	0	22	2	0	3	81
Wrangell	7	7	1	1	1	11	1	3	0	1	10	43
Yakutat	0	2	0	0	1	5	0	0	0	0	1	9
Total	3,877	2,709	428	176	1,154	2,979	65	1,349	227	257	4,855	18,076
% of total	21.4	15.0	2.4	1.0	6.4	16.5	0.4	7.5	1.2	1.4	26.8	100.0
1st District	338	385	35	16	146	308	11	340	25	30	707	2,341
2nd District	433	159	5	6	113	77	3	8	38	2	247	1,091
3rd District	2,298	1,807	325	125	773	2,077	45	921	112	192	2,539	11,214
4th District	808	358	63	29	122	517	6	80	52	33	1,362	3,430

1. St. Mary's court closed in 2016. Records for filings from the venue are still maintained separately.

**Table 5.10. Criminal Case Types
FY 22**

Person	Public Order
Homicide	Riot
Assault	Disorderly Conduct
Reckless Endangerment	Harassment
Kidnapping	Indecent Viewing or Photography
Custodial Interference	Possess or Distribute Child Pornography
Human Trafficking	Cruelty to Animals
Sex Offenses	Recruiting Gang Members
Robbery	Gambling
Extortion	Alcohol Licensing Laws
Coercion	
	Motor Vehicle DUI
Property	Motor Vehicle Reckless Driving
Theft	
Burglary	Motor Vehicle Other
Criminal Trespass	
Vehicle Theft	Protection Order Violation
Arson	
Criminal Mischief	Fish and Game
Business and Commercial Offenses	
	Other
Drugs	Offenses against Public Administration
Misconduct Involving a Controlled Substance	Offenses against Family and
Manufacture, Delivery or Possession of	Vulnerable Adults
Imitation Controlled Substance	All other offenses, including cases in which
	a charging document was never filed
Weapons	
Misconduct Involving Weapons	
Criminal Possession of Explosives	
Unlawful Furnishing of Explosives	

Criminal cases typically contain multiple charges. The Alaska Court System categorizes cases for reporting purposes based on the most serious charge. In FY07 the Alaska Court System changed the way it categorizes criminal cases for annual reporting. The categories now conform to the National Center for State Courts' national model for caseload statistical reporting. This change is intended to make Alaska statistics easier to compile, understand, and compare to those of other jurisdictions.

**Table 5.11. Misdemeanor Case Dispositions
FY 20 – FY 22**

Court	FY 20	FY 21	FY 22	Change	
				FY 20 to FY 22	FY 21 to FY 22
Anchorage	7,257	5,686	6,970	-4%	23%
Angoon	6	8	6	N/S	N/S
Aniak	51	58	34	-33%	-41%
Bethel	1,146	1,099	742	-35%	-32%
Cordova	51	41	50	-2%	22%
Delta Junction	27	35	38	41%	9%
Dillingham	284	333	267	-6%	-20%
Emmonak	183	140	62	-66%	-56%
Fairbanks	2,912	3,197	2,466	-15%	-23%
Fort Yukon	24	44	61	154%	39%
Galena	29	22	23	-21%	5%
Glennallen	70	89	107	53%	20%
Haines	28	40	18	-36%	-55%
Homer	324	381	417	29%	9%
Hoonah	26	19	13	-50%	-32%
Hooper Bay	131	140	69	-47%	-51%
Juneau	1,257	1,216	1,134	-10%	-7%
Kenai	1,342	1,456	1,168	-13%	-20%
Ketchikan	810	777	698	-14%	-10%
Kodiak	368	263	187	-49%	-29%
Kotzebue	310	200	318	3%	59%
Naknek	185	149	193	4%	30%
Nenana	125	95	78	-38%	-18%
Nome	455	511	529	16%	4%
Palmer	1,890	1,589	2,430	29%	53%
Petersburg	130	113	85	-35%	-25%
Prince of Wales	259	260	265	2%	2%
Sand Point	43	47	26	-40%	-45%
Seward	130	247	230	77%	-7%
Sitka	254	260	182	-28%	-30%
Skagway	5	11	4	N/S	N/S
St. Mary's ¹	103	150	138	34%	-8%
St. Paul	9	2	7	N/S	N/S
Tok	57	113	80	40%	-29%
Unalakleet	80	72	77	-4%	7%
Unalaska	107	121	64	-40%	-47%
Utqiagvik	383	265	347	-9%	31%
Valdez	128	55	104	-19%	89%
Wrangell	74	51	31	-58%	-39%
Yakutat	6	4	5	N/S	N/S
Total	21,059	19,359	19,723	-6%	2%
1st District	2,855	2,759	2,441	-15%	-12%
2nd District	1,228	1,048	1,271	4%	21%
3rd District	12,188	10,459	12,220	0%	17%
4th District	4,788	5,093	3,791	-21%	-26%

N/S: Numbers 10 or less are not compared statistically.

1. St. Mary's court closed in 2016. Records for filings from the venue are still maintained separately.

**Table 5.12. Misdemeanor Case Dispositions by Manner of Disposition
FY 22**

	Non-trial			Trial		Total
	Case dismissed	Guilty plea	Other	Guilty	Not guilty	
Anchorage	3,482	3,476	0	11	1	6,970
Angeon	2	4	0	0	0	6
Aniak	13	21	0	0	0	34
Bethel	481	258	0	0	3	742
Cordova	14	33	1	1	1	50
Delta Junction	17	21	0	0	0	38
Dillingham	148	117	0	1	1	267
Emmonak	39	22	0	0	1	62
Fairbanks	1,654	803	0	7	2	2,466
Fort Yukon	47	14	0	0	0	61
Galena	15	8	0	0	0	23
Glennallen	60	46	1	0	0	107
Haines	10	7	1	0	0	18
Homer	208	205	2	0	2	417
Hoonah	6	6	0	1	0	13
Hooper Bay	40	28	0	0	1	69
Juneau	650	477	0	5	2	1,134
Kenai	468	697	0	2	1	1,168
Ketchikan	399	291	4	2	2	698
Kodiak	53	130	1	2	1	187
Kotzebue	114	201	1	1	1	318
Naknek	85	108	0	0	0	193
Nenana	46	31	0	1	0	78
Nome	326	203	0	0	0	529
Palmer	1,268	1,150	1	8	3	2,430
Petersburg	26	57	1	0	1	85
Prince of Wales	203	57	0	3	2	265
Sand Point	14	12	0	0	0	26
Seward	88	139	0	1	2	230
Sitka	69	112	0	0	1	182
Skagway	4	0	0	0	0	4
St. Mary's ¹	63	73	0	1	1	138
St. Paul	6	1	0	0	0	7
Tok	61	18	0	0	1	80
Unalakleet	49	28	0	0	0	77
Unalaska	25	38	0	1	0	64
Utqiagvik	167	179	0	1	0	347
Valdez	50	52	0	2	0	104
Wrangell	10	21	0	0	0	31
Yakutat	2	2	0	1	0	5
Total	10,482	9,146	13	52	30	19,723
% of total	53.1	46.4	0.1	0.3	0.1	100.0
1st District	1,381	1,034	6	12	8	2,441
2nd District	656	611	1	2	1	1,271
3rd District	5,969	6,204	6	29	12	12,220
4th District	2,476	1,297	0	9	9	3,791

Note: Due to the covid pandemic, jury trials were suspended for various periods at various locations throughout FY22.

1. St. Mary's court closed in 2016. Records for filings from the venue are still maintained separately.

Table 5.13. Felony Filings in District Court¹
FY 20 – FY 22

Court	FY 20	FY 21	FY 22	Change	
				FY 20 to FY 22	FY 21 to FY 22
Anchorage	3,258	2,986	3,023	-7%	1%
Angoon	1	0	3	N/S	N/S
Aniak	45	27	32	-29%	19%
Bethel	221	228	266	20%	17%
Cordova	5	16	10	N/S	N/S
Delta Junction	17	10	5	N/S	N/S
Dillingham	128	112	80	-37%	-29%
Emmonak	63	46	50	-21%	9%
Fairbanks	606	640	521	-14%	-19%
Fort Yukon	22	18	14	-36%	-22%
Galena	13	8	15	15%	N/S
Glennallen	16	20	22	38%	10%
Haines	4	7	6	N/S	N/S
Homer	114	108	118	4%	9%
Hoonah	4	1	2	N/S	N/S
Hooper Bay	32	33	34	6%	3%
Juneau	186	153	133	-28%	-13%
Kenai	451	394	340	-25%	-14%
Ketchikan	106	115	109	3%	-5%
Kodiak	104	72	101	-3%	40%
Kotzebue	169	179	134	-21%	-25%
Naknek	36	33	46	28%	39%
Nenana	30	25	21	-30%	-16%
Nome	148	153	112	-24%	-27%
Palmer	509	604	593	17%	-2%
Petersburg	15	16	17	13%	6%
Prince of Wales	50	42	29	-42%	-31%
Sand Point	19	9	9	N/S	N/S
Seward	72	54	76	6%	41%
Sitka	41	30	35	-15%	17%
Skagway	1	0	0	N/S	N/S
St. Mary's ²	63	52	49	-22%	-6%
St. Paul	7	6	11	N/S	N/S
Tok	28	29	38	36%	31%
Unalakleet	66	60	46	-30%	-23%
Unalaska	16	12	11	-31%	-8%
Utqiagvik	73	61	57	-22%	-7%
Valdez	24	14	12	-50%	-14%
Wrangell	9	13	9	N/S	N/S
Yakutat	1	1	5	N/S	N/S
Total	6,773	6,387	6,194	-9%	-3%
1st District	418	378	348	-17%	-8%
2nd District	456	453	349	-23%	-23%
3rd District	4,759	4,440	4,452	-6%	0%
4th District	1,140	1,116	1,045	-8%	-6%

N/S: Numbers 10 or less are not compared statistically.

1. This chart is for information purposes only. The totals are not included in the District Court totals. Felony cases are reported as Superior Court cases, regardless of where the case was initiated.
2. St. Mary's court closed in 2016. Records for filings from the venue are still maintained separately.

**Table 5.14. Post-judgment Filings:
Misdemeanor Petitions to Revoke Probation
FY 20 – FY 22**

Court	FY 20	FY 21	FY 22	Change	
				FY 20 to FY 22	FY 21 to FY 22
Anchorage	320	541	282	-12%	-48%
Angoon	0	0	2	N/S	N/S
Aniak	1	0	1	N/S	N/S
Bethel	48	58	59	23%	2%
Cordova	3	1	5	N/S	N/S
Delta Junction	2	0	1	N/S	N/S
Dillingham	13	11	11	-15%	0%
Emmonak	5	14	9	N/S	N/S
Fairbanks	205	159	104	-49%	-35%
Fort Yukon	0	1	1	N/S	N/S
Galena	0	0	0	N/S	N/S
Glennallen	6	4	3	N/S	N/S
Haines	0	0	0	N/S	N/S
Homer	15	19	33	120%	74%
Hoonah	1	0	0	N/S	N/S
Hooper Bay	4	6	1	N/S	N/S
Juneau	93	142	139	49%	-2%
Kenai	126	102	99	-21%	-3%
Ketchikan	85	50	31	-64%	-38%
Kodiak	47	23	20	-57%	-13%
Kotzebue	43	13	37	-14%	185%
Naknek	3	1	3	N/S	N/S
Nenana	4	2	1	N/S	N/S
Nome	44	21	44	0%	110%
Palmer	120	78	39	-67%	-50%
Petersburg	3	6	3	N/S	N/S
Prince of Wales	6	3	7	N/S	N/S
Sand Point	2	0	0	N/S	N/S
Seward	10	12	18	N/S	50%
Sitka	10	8	8	N/S	N/S
Skagway	0	0	0	N/S	N/S
St. Mary's ¹	8	8	8	N/S	N/S
St. Paul	0	1	0	N/S	N/S
Tok	5	2	4	N/S	N/S
Unalakleet	0	0	1	N/S	N/S
Unalaska	10	0	0	N/S	N/S
Utqiagvik	10	7	11	N/S	N/S
Valdez	9	2	0	N/S	N/S
Wrangell	1	4	2	N/S	N/S
Yakutat	0	1	0	N/S	N/S
Total	1,262	1,300	987	-22%	-24%
1st District	199	214	192	-4%	-10%
2nd District	97	41	93	-4%	127%
3rd District	684	795	513	-25%	-35%
4th District	282	250	189	-33%	-24%

N/S: Numbers 10 or less are not compared statistically.

1. St. Mary's court closed in 2016. Records for filings from the venue are still maintained separately.

**Table 5.15. Small Claims Case Filings
FY 20 – FY 22**

Court	FY 20	FY 21	FY 22	Change	
				FY 20 to FY 22	FY 21 to FY 22
Anchorage	3,092	1,341	1,571	-49%	17%
Angoon	1	0	0	N/S	N/S
Aniak	34	3	0	N/S	N/S
Bethel	21	13	13	-38%	0%
Cordova	1	2	2	N/S	N/S
Delta Junction	9	9	8	N/S	N/S
Dillingham	6	5	9	N/S	N/S
Emmonak	2	4	2	N/S	N/S
Fairbanks	482	410	580	20%	41%
Fort Yukon	2	3	4	N/S	N/S
Galena	5	2	2	N/S	N/S
Glennallen	7	7	6	N/S	N/S
Haines	5	3	5	N/S	N/S
Homer	49	26	45	-8%	73%
Hoonah	2	2	0	N/S	N/S
Hooper Bay	1	0	2	N/S	N/S
Juneau	243	300	150	-38%	-50%
Kenai	179	121	197	10%	63%
Ketchikan	111	123	160	44%	30%
Kodiak	37	16	30	-19%	88%
Kotzebue	20	12	11	-45%	-8%
Naknek	1	3	0	N/S	N/S
Nenana	11	5	10	N/S	N/S
Nome	21	13	10	N/S	N/S
Palmer	801	843	912	14%	8%
Petersburg	10	2	14	N/S	N/S
Prince of Wales	7	3	5	N/S	N/S
Sand Point	1	0	0	N/S	N/S
Seward	8	12	11	N/S	-8%
Sitka	89	79	50	-44%	-37%
Skagway	1	1	3	N/S	N/S
St. Mary's ¹	0	1	0	N/S	N/S
St. Paul	0	0	0	N/S	N/S
Tok	5	3	12	N/S	N/S
Unalakleet	1	0	4	N/S	N/S
Unalaska	5	1	2	N/S	N/S
Utqiagvik	11	9	15	36%	N/S
Valdez	13	13	34	162%	162%
Wrangell	6	26	9	N/S	N/S
Yakutat	3	6	8	N/S	N/S
Total	5,303	3,422	3,896	-27%	14%
1st District	478	545	404	-15%	-26%
2nd District	53	34	40	-25%	18%
3rd District	4,200	2,390	2,819	-33%	18%
4th District	572	453	633	11%	40%

N/S: Numbers 10 or less are not compared statistically.

1. St. Mary's court closed in 2016. Records for filings from the venue are still maintained separately.

**Table 5.16. Small Claims Case Dispositions
FY 20 – FY 22**

Court	FY 20	FY 21	FY 22	Change	
				FY 20 to FY 22	FY 21 to FY 22
Anchorage	3,106	2,006	1,342	-57%	-33%
Angoon	0	0	0	N/S	N/S
Aniak	28	6	1	N/S	N/S
Bethel	12	27	12	0%	-56%
Cordova	2	1	3	N/S	N/S
Delta Junction	12	5	7	N/S	N/S
Dillingham	9	7	6	N/S	N/S
Emmonak	1	4	3	N/S	N/S
Fairbanks	489	423	480	-2%	13%
Fort Yukon	0	3	3	N/S	N/S
Galena	3	1	2	N/S	N/S
Glennallen	10	9	8	N/S	N/S
Haines	8	4	3	N/S	N/S
Homer	44	33	40	-9%	21%
Hoonah	3	2	0	N/S	N/S
Hooper Bay	2	0	0	N/S	N/S
Juneau	241	263	157	-35%	-40%
Kenai	195	158	166	-15%	5%
Ketchikan	92	100	173	88%	73%
Kodiak	39	21	21	-46%	0%
Kotzebue	19	18	9	N/S	N/S
Naknek	2	2	1	N/S	N/S
Nenana	12	5	8	N/S	N/S
Nome	7	25	11	N/S	-56%
Palmer	704	736	488	-31%	-34%
Petersburg	9	4	11	N/S	N/S
Prince of Wales	10	5	4	N/S	N/S
Sand Point	1	0	0	N/S	N/S
Seward	13	13	12	-8%	-8%
Sitka	47	123	52	11%	-58%
Skagway	0	1	3	N/S	N/S
St. Mary's ¹	2	0	1	N/S	N/S
St. Paul	0	0	0	N/S	N/S
Tok	11	3	8	N/S	N/S
Unalakleet	16	0	0	N/S	N/S
Unalaska	4	3	3	N/S	N/S
Utqiagvik	12	18	10	N/S	N/S
Valdez	11	14	17	55%	21%
Wrangell	6	13	20	N/S	54%
Yakutat	3	6	6	N/S	N/S
Total	5,185	4,062	3,091	-40%	-24%
1st District	419	521	429	2%	-18%
2nd District	54	61	30	-44%	-51%
3rd District	4,140	3,003	2,107	-49%	-30%
4th District	572	477	525	-8%	10%

N/S: Numbers 10 or less are not compared statistically.

1. St. Mary's court closed in 2016. Records for filings from the venue are still maintained separately.

**Table 5.17. Small Claims Case Dispositions by Manner of Disposition
FY 22**

Court	Stage of disposition					Total
	Dismiss	Default judgment	Judgment on the pleadings	Trial	Other	
Anchorage	651	554	59	46	32	1,342
Anoon	0	0	0	0	0	0
Aniak	1	0	0	0	0	1
Bethel	6	3	1	1	1	12
Cordova	1	1	0	1	0	3
Delta Junction	6	1	0	0	0	7
Dillingham	2	3	1	0	0	6
Emmonak	3	0	0	0	0	3
Fairbanks	268	151	32	16	13	480
Fort Yukon	2	1	0	0	0	3
Galena	1	1	0	0	0	2
Glennallen	6	1	0	1	0	8
Haines	1	1	0	1	0	3
Homer	10	20	8	0	2	40
Hoonah	0	0	0	0	0	0
Hooper Bay	0	0	0	0	0	0
Juneau	76	66	9	5	1	157
Kenai	71	75	11	7	2	166
Ketchikan	76	85	6	5	1	173
Kodiak	9	8	3	1	0	21
Kotzebue	8	0	0	0	1	9
Naknek	1	0	0	0	0	1
Nenana	3	5	0	0	0	8
Nome	3	5	1	2	0	11
Palmer	226	172	28	48	14	488
Petersburg	5	3	3	0	0	11
Prince of Wales	1	0	0	3	0	4
Sand Point	0	0	0	0	0	0
Seward	7	2	1	1	1	12
Sitka	15	28	2	7	0	52
Skagway	1	1	0	0	1	3
St. Mary's ¹	1	0	0	0	0	1
St. Paul	0	0	0	0	0	0
Tok	6	0	0	2	0	8
Unalakleet	0	0	0	0	0	0
Unalaska	3	0	0	0	0	3
Utqiagvik	5	5	0	0	0	10
Valdez	8	8	1	0	0	17
Wrangell	6	8	5	1	0	20
Yakutat	3	3	0	0	0	6
Total	1,492	1,211	171	148	69	3,091
% of total	48.3	39.2	5.5	4.8	2.2	100.0
1st District	184	195	25	22	3	429
2nd District	16	10	1	2	1	30
3rd District	995	844	112	105	51	2,107
4th District	297	162	33	19	14	525

1. St. Mary's court closed in 2016. Records for filings from the venue are still maintained separately.

**Table 5.18. Civil Protective Order¹ Case Filings
FY 20 – FY 22**

Court	FY 20	FY 21	FY 22	Change	
				FY 20 to FY 22	FY 21 to FY 22
Anchorage	3,239	2,667	3,148	-3%	18%
Anoon	1	3	3	N/S	N/S
Aniak	36	11	16	-56%	45%
Bethel	224	208	291	30%	40%
Cordova	5	1	12	N/S	N/S
Delta Junction	50	38	34	-32%	-11%
Dillingham	98	99	108	10%	9%
Emmonak	40	16	34	-15%	113%
Fairbanks	760	652	666	-12%	2%
Fort Yukon	16	7	5	N/S	N/S
Galena	17	24	17	0%	-29%
Glennallen	24	14	24	0%	71%
Haines	23	14	10	N/S	N/S
Homer	136	102	128	-6%	25%
Hoonah	12	18	7	N/S	N/S
Hooper Bay	41	34	39	-5%	15%
Juneau	437	376	329	-25%	-12%
Kenai	378	358	368	-3%	3%
Ketchikan	240	180	210	-12%	17%
Kodiak	95	81	87	-8%	7%
Kotzebue	145	106	101	-30%	-5%
Naknek	25	38	15	-40%	-61%
Nenana	15	9	17	13%	N/S
Nome	193	194	143	-26%	-26%
Palmer	911	805	963	6%	20%
Petersburg	44	54	35	-20%	-35%
Prince of Wales	77	80	68	-12%	-15%
Sand Point	2	1	11	N/S	N/S
Seward	39	21	38	-3%	81%
Sitka	80	87	55	-31%	-37%
Skagway	4	7	7	N/S	N/S
St. Mary's ²	36	31	23	-36%	-26%
St. Paul	2	0	5	N/S	N/S
Tok	22	25	23	5%	-8%
Unalakleet	9	11	13	N/S	18%
Unalaska	12	10	15	25%	N/S
Utqiagvik	209	207	218	4%	5%
Valdez	44	30	22	-50%	-27%
Wrangell	19	20	22	16%	10%
Yakutat	8	3	3	N/S	N/S
Total	7,768	6,642	7,333	-6%	10%
1st District	945	842	749	-21%	-11%
2nd District	556	518	475	-15%	-8%
3rd District	5,010	4,227	4,944	-1%	17%
4th District	1,257	1,055	1,165	-7%	10%

N/S: Numbers 10 or less are not compared statistically.

1. The Civil Protective Order case group includes petitions for domestic violence, stalking, and sexual assault protective orders.

2. St. Mary's court closed in 2016. Records for filings from the venue are still maintained separately.

**Table 5.19. Civil Protective Order¹ Case Dispositions
FY 20 – FY 22**

Court	FY 20	FY 21	FY 22	Change	
				FY 20 to FY 22	FY 21 to FY 22
Anchorage	3,178	2,661	3,069	-3%	15%
Anagoon	1	2	3	N/S	N/S
Aniak	35	11	18	-49%	64%
Bethel	216	194	270	25%	39%
Cordova	6	0	12	N/S	N/S
Delta Junction	51	32	40	-22%	25%
Dillingham	97	97	114	18%	18%
Emmonak	32	21	32	0%	52%
Fairbanks	750	652	639	-15%	-2%
Fort Yukon	17	6	6	N/S	N/S
Galena	16	25	16	0%	-36%
Glennallen	25	12	20	-20%	67%
Haines	22	14	10	N/S	N/S
Homer	130	111	119	-8%	7%
Hoonah	10	16	10	N/S	N/S
Hooper Bay	45	36	37	-18%	3%
Juneau	440	363	335	-24%	-8%
Kenai	378	338	361	-4%	7%
Ketchikan	242	179	194	-20%	8%
Kodiak	95	81	81	-15%	0%
Kotzebue	146	104	103	-29%	-1%
Naknek	22	39	16	-27%	-59%
Nenana	15	9	18	20%	N/S
Nome	187	174	143	-24%	-18%
Palmer	901	791	927	3%	17%
Petersburg	43	51	37	-14%	-27%
Prince of Wales	78	64	84	8%	31%
Sand Point	1	1	12	N/S	N/S
Seward	40	22	39	-2%	77%
Sitka	81	85	47	-42%	-45%
Skagway	4	6	8	N/S	N/S
St. Mary's ²	32	32	22	-31%	-31%
St. Paul	1	0	3	N/S	N/S
Tok	21	26	23	10%	-12%
Unalakleet	7	8	10	N/S	N/S
Unalaska	12	7	11	-8%	N/S
Utqiagvik	185	158	224	21%	42%
Valdez	44	26	20	-55%	-23%
Wrangell	19	22	20	5%	-9%
Yakutat	8	3	3	N/S	N/S
Total	7,633	6,479	7,156	-6%	10%
1st District	948	805	751	-21%	-7%
2nd District	525	444	480	-9%	8%
3rd District	4,930	4,186	4,804	-3%	15%
4th District	1,230	1,044	1,121	-9%	7%

N/S: Numbers 10 or less are not compared statistically.

1. The Civil Protective Order case group includes petitions for domestic violence, stalking, and sexual assault protective orders.

2. St. Mary's court closed in 2016. Records for filings from the venue are still maintained separately.

**Table 5.20. District Court General Civil Case Filings
FY 20 – FY 22**

Court	FY 20	FY 21	FY 22	Change	
				FY 20 to FY 22	FY 21 to FY 22
Anchorage	3,734	2,990	3,010	-19%	1%
Angoon	0	0	2	N/S	N/S
Aniak	3	1	3	N/S	N/S
Bethel	40	43	41	3%	-5%
Cordova	7	13	9	N/S	N/S
Delta Junction	9	17	20	N/S	18%
Dillingham	11	14	14	27%	0%
Emmonak	2	2	1	N/S	N/S
Fairbanks	714	794	678	-5%	-15%
Fort Yukon	1	1	0	N/S	N/S
Galena	1	5	0	N/S	N/S
Glennallen	8	10	7	N/S	N/S
Haines	6	14	7	N/S	N/S
Homer	67	76	60	-10%	-21%
Hoonah	1	2	2	N/S	N/S
Hooper Bay	0	0	0	N/S	N/S
Juneau	242	194	240	-1%	24%
Kenai	241	260	274	14%	5%
Ketchikan	131	119	111	-15%	-7%
Kodiak	61	68	51	-16%	-25%
Kotzebue	25	26	23	-8%	-12%
Naknek	11	3	13	18%	N/S
Nenana	14	17	11	-21%	-35%
Nome	25	29	10	N/S	N/S
Palmer	712	729	616	-13%	-16%
Petersburg	18	20	15	-17%	-25%
Prince of Wales	14	18	14	0%	-22%
Sand Point	4	3	2	N/S	N/S
Seward	26	18	32	23%	78%
Sitka	52	49	47	-10%	-4%
Skagway	2	3	3	N/S	N/S
St. Mary's ¹	0	0	0	N/S	N/S
St. Paul	0	0	0	N/S	N/S
Tok	9	6	3	N/S	N/S
Unalakleet	1	1	0	N/S	N/S
Unalaska	12	17	8	N/S	N/S
Utqiagvik	30	26	14	-53%	-46%
Valdez	6	20	16	N/S	-20%
Wrangell	13	9	7	N/S	N/S
Yakutat	1	3	2	N/S	N/S
Total	6,254	5,620	5,366	-14%	-5%
1st District	480	431	450	-6%	4%
2nd District	81	82	47	-42%	-43%
3rd District	4,900	4,221	4,112	-16%	-3%
4th District	793	886	757	-5%	-15%

N/S: Numbers 10 or less are not compared statistically.

1. St. Mary's court closed in 2016. Records for filings from the venue are still maintained separately.

**Table 5.21. District Court General Civil Filings by Case Type
FY 22**

Court	Eviction/ real property	Debt/ contract	Post- conviction relief	Other	Total
Anchorage	1,332	1,361	3	314	3,010
Angoon	0	2	0	0	2
Aniak	0	3	0	0	3
Bethel	5	28	0	8	41
Cordova	5	4	0	0	9
Delta Junction	2	18	0	0	20
Dillingham	1	12	1	0	14
Emmonak	0	1	0	0	1
Fairbanks	159	382	0	137	678
Fort Yukon	0	0	0	0	0
Galena	0	0	0	0	0
Glennallen	1	6	0	0	7
Haines	1	6	0	0	7
Homer	12	38	0	10	60
Hoonah	0	2	0	0	2
Hooper Bay	0	0	0	0	0
Juneau	81	146	1	12	240
Kenai	73	176	2	23	274
Ketchikan	38	68	1	4	111
Kodiak	7	41	0	3	51
Kotzebue	8	9	1	5	23
Naknek	0	13	0	0	13
Nenana	0	10	0	1	11
Nome	2	6	0	2	10
Palmer	105	456	2	53	616
Petersburg	7	8	0	0	15
Prince of Wales	3	11	0	0	14
Sand Point	0	2	0	0	2
Seward	15	16	0	1	32
Sitka	13	32	0	2	47
Skagway	1	2	0	0	3
St. Mary's ¹	0	0	0	0	0
St. Paul	0	0	0	0	0
Tok	0	3	0	0	3
Unalakleet	0	0	0	0	0
Unalaska	2	6	0	0	8
Utqiagvik	4	9	0	1	14
Valdez	7	9	0	0	16
Wrangell	1	6	0	0	7
Yakutat	0	2	0	0	2
Total	1,885	2,894	11	576	5,366
% of total	35.1	53.9	0.2	10.8	100.0
1st District	145	285	2	18	450
2nd District	14	24	1	8	47
3rd District	1,560	2,140	8	404	4,112
4th District	166	445	0	146	757

1. St. Mary's court closed in 2016. Records for filings from the venue are still maintained separately.

**Table 5.22. District Court General Civil Case Dispositions
FY 20 – FY 22**

Court	FY 20	FY 21	FY 22	Change	
				FY 20 to FY 22	FY 21 to FY 22
Anchorage	4,084	3,343	2,791	-32%	-17%
Angoon	1	0	0	N/S	N/S
Aniak	2	1	2	N/S	N/S
Bethel	53	51	43	-19%	-16%
Cordova	7	8	13	N/S	N/S
Delta Junction	11	13	17	55%	31%
Dillingham	13	12	19	46%	58%
Emmonak	3	0	2	N/S	N/S
Fairbanks	842	764	693	-18%	-9%
Fort Yukon	2	2	1	N/S	N/S
Galena	3	2	3	N/S	N/S
Glennallen	10	7	12	N/S	N/S
Haines	5	13	9	N/S	N/S
Homer	84	72	65	-23%	-10%
Hoonah	4	1	2	N/S	N/S
Hooper Bay	0	0	0	N/S	N/S
Juneau	216	186	269	25%	45%
Kenai	219	315	268	22%	-15%
Ketchikan	139	109	126	-9%	16%
Kodiak	60	55	74	23%	35%
Kotzebue	22	22	32	45%	45%
Naknek	12	5	6	N/S	N/S
Nenana	20	15	13	-35%	-13%
Nome	25	27	15	-40%	-44%
Palmer	774	550	854	10%	55%
Petersburg	19	19	19	0%	0%
Prince of Wales	12	12	19	58%	58%
Sand Point	3	2	4	N/S	N/S
Seward	32	15	29	-9%	93%
Sitka	61	55	35	-43%	-36%
Skagway	5	1	3	N/S	N/S
St. Mary's ¹	0	0	0	N/S	N/S
St. Paul	2	0	0	N/S	N/S
Tok	13	6	3	N/S	N/S
Unalakleet	0	0	0	N/S	N/S
Unalaska	17	17	12	-29%	-29%
Utqiagvik	29	23	22	-24%	-4%
Valdez	11	16	16	45%	0%
Wrangell	8	10	10	N/S	N/S
Yakutat	1	1	3	N/S	N/S
Total	6,824	5,750	5,504	-19%	-4%
1st District	471	407	495	5%	22%
2nd District	76	72	69	-9%	-4%
3rd District	5,328	4,417	4,163	-22%	-6%
4th District	949	854	777	-18%	-9%

N/S: Numbers 10 or less are not compared statistically.

1. St. Mary's court closed in 2016. Records for filings from the venue are still maintained separately.

**Table 5.23. District Court General Civil Case Dispositions
by Manner of Disposition
FY 22**

Court	Stage of disposition						Total
	Dismiss/ settle	Default judgment	Summary judgment	Court trial	Jury trial	Other	
Anchorage	1,784	715	204	13	2	73	2,791
Angoon	0	0	0	0	0	0	0
Aniak	0	2	0	0	0	0	2
Bethel	25	8	1	0	5	4	43
Cordova	7	4	2	0	0	0	13
Delta Junction	8	5	3	0	0	1	17
Dillingham	11	3	3	1	0	1	19
Emmonak	1	1	0	0	0	0	2
Fairbanks	436	173	68	2	1	13	693
Fort Yukon	0	1	0	0	0	0	1
Galena	1	2	0	0	0	0	3
Glennallen	10	1	0	0	0	1	12
Haines	6	2	1	0	0	0	9
Homer	31	16	15	2	0	1	65
Hoonah	1	1	0	0	0	0	2
Hooper Bay	0	0	0	0	0	0	0
Juneau	165	65	33	0	0	6	269
Kenai	147	73	35	4	0	9	268
Ketchikan	68	33	20	1	1	3	126
Kodiak	43	15	14	0	1	1	74
Kotzebue	16	5	6	0	1	4	32
Naknek	4	1	1	0	0	0	6
Nenana	11	0	1	0	1	0	13
Nome	7	7	1	0	0	0	15
Palmer	435	288	105	2	2	22	854
Petersburg	7	8	2	0	0	2	19
Prince of Wales	12	5	2	0	0	0	19
Sand Point	2	1	1	0	0	0	4
Seward	8	8	13	0	0	0	29
Sitka	24	3	6	0	0	2	35
Skagway	3	0	0	0	0	0	3
St. Mary's ¹	0	0	0	0	0	0	0
St. Paul	0	0	0	0	0	0	0
Tok	3	0	0	0	0	0	3
Unalakleet	0	0	0	0	0	0	0
Unalaska	8	3	1	0	0	0	12
Utqiagvik	13	6	3	0	0	0	22
Valdez	10	4	0	2	0	0	16
Wrangell	5	3	2	0	0	0	10
Yakutat	2	1	0	0	0	0	3
Total	3,314	1,463	543	27	14	143	5,504
% of total	60.2	26.6	9.9	0.5	0.2	2.6	100.0
1st District	293	121	66	1	1	13	495
2nd District	36	18	10	0	1	4	69
3rd District	2,500	1,132	394	24	5	108	4,163
4th District	485	192	73	2	7	18	777

Note: Due to the covid pandemic, jury trials were suspended for various periods at various locations throughout FY22.

1. St. Mary's court closed in 2016. Records for filings from the venue are still maintained separately.

**Table 5.24. Minor Offense Case Dispositions
FY 20 – FY 22**

Court	FY 20	FY 21	FY 22	Change	
				FY 20 to FY 22	FY 21 to FY 22
Anchorage ¹	26,319	15,526	21,550	-18%	39%
Angoon	5	0	0	N/S	N/S
Aniak	25	11	16	-36%	45%
Bethel	194	144	91	-53%	-37%
Cordova	74	77	80	8%	4%
Delta Junction	254	226	645	154%	185%
Dillingham	236	238	90	-62%	-62%
Emmonak	17	6	8	N/S	N/S
Fairbanks	5,637	5,674	4,474	-21%	-21%
Fort Yukon	3	12	5	N/S	N/S
Galena	9	9	4	N/S	N/S
Glennallen	319	268	455	43%	70%
Haines	138	63	60	-57%	-5%
Homer	1,015	779	884	-13%	13%
Hoonah	22	24	16	-27%	-33%
Hooper Bay	12	2	1	N/S	N/S
Juneau	1,939	1,851	1,926	-1%	4%
Kenai	5,326	5,070	5,153	-3%	2%
Ketchikan	574	462	344	-40%	-26%
Kodiak	791	500	586	-26%	17%
Kotzebue	76	54	61	-20%	13%
Naknek	83	69	99	19%	43%
Nenana	2,828	2,256	2,311	-18%	2%
Nome	265	540	163	-38%	-70%
Palmer	7,965	8,737	7,067	-11%	-19%
Petersburg	111	113	106	-5%	-6%
Prince of Wales	270	362	404	50%	12%
Sand Point	29	6	6	N/S	N/S
Seward	1,511	1,269	1,454	-4%	15%
Sitka	365	330	270	-26%	-18%
Skagway	3	3	6	N/S	N/S
St. Mary's ²	6	1	4	N/S	N/S
St. Paul	0	0	2	N/S	N/S
Tok	214	442	179	-16%	-60%
Unalakleet	18	27	18	0%	-33%
Unalaska	214	115	129	-40%	12%
Utqiaġvik	71	80	60	-15%	-25%
Valdez	200	116	63	-68%	-46%
Wrangell	35	55	61	74%	11%
Yakutat	50	16	18	-64%	13%
Total	57,223	45,533	48,869	-15%	7%
1st District	3,512	3,279	3,211	-9%	-2%
2nd District	430	701	302	-30%	-57%
3rd District	44,082	32,770	37,618	-15%	15%
4th District	9,199	8,783	7,738	-16%	-12%

N/S: Numbers 10 or less are not compared statistically.

1. From January 1, 2019 – June 30, 2019 (FY19), the Anchorage Police Department did not file unpaid citations with the court system for entry of default judgment. The FY20 figures include filings for the eighteen-month period from January 1, 2019 – June 30, 2020. From April 30, 2021 – June 30 2021, electronic reporting of minor offense citations was suspended. The citations from this period have been included in the FY22 numbers.

2. St. Mary's court closed in 2016. Records for filings from the venue are still maintained separately.

**Table 5.25. Minor Offense¹ Case Dispositions by Case Type
FY 22**

Court	Equipment	Speeding	Improper driver behavior	Maneuvers	Alcohol/ drugs	Fish & Game	Other	Total
Anchorage	2,321	4,495	9,918	3,162	324	41	1,289	21,550
Angoon	0	0	0	0	0	0	0	0
Aniak	0	0	0	1	0	15	0	16
Bethel	0	0	17	7	0	23	44	91
Cordova	6	0	7	2	0	49	16	80
Delta Junction	103	267	226	20	1	16	12	645
Dillingham	1	0	13	4	2	30	40	90
Emmonak	0	2	4	1	1	0	0	8
Fairbanks	801	1,390	1,477	377	23	84	322	4,474
Fort Yukon	0	0	0	0	0	4	1	5
Galena	0	2	0	0	0	2	0	4
Glennallen	28	285	86	11	3	33	9	455
Haines	3	13	27	0	1	5	11	60
Homer	83	363	244	44	8	98	44	884
Hoonah	0	0	0	0	0	14	2	16
Hooper Bay	0	0	0	0	0	0	1	1
Juneau	53	295	1,016	158	1	49	354	1,926
Kenai	659	2,497	1,106	211	13	458	209	5,153
Ketchikan	24	12	153	12	2	67	74	344
Kodiak	36	86	201	51	3	87	122	586
Kotzebue	0	0	4	7	0	30	20	61
Naknek	12	10	27	2	1	39	8	99
Nenana	136	1,788	271	67	4	25	20	2,311
Nome	4	0	32	13	0	3	111	163
Palmer	471	2,569	1,855	387	34	205	1,546	7,067
Petersburg	8	5	32	1	0	45	15	106
Prince of Wales	21	97	132	6	0	91	57	404
Sand Point	0	0	1	0	0	4	1	6
Seward	258	660	359	54	3	72	48	1,454
Sitka	6	15	65	5	0	108	71	270
Skagway	0	2	1	0	0	0	3	6
St. Mary's ²	0	0	0	0	0	2	2	4
St. Paul	0	0	0	0	0	1	1	2
Tok	30	59	53	10	1	7	19	179
Unalakleet	6	0	0	0	0	2	10	18
Unalaska	40	7	57	10	0	3	12	129
Utqiagvik	2	16	4	0	0	19	19	60
Valdez	1	3	8	11	0	11	29	63
Wrangell	0	0	20	6	0	26	9	61
Yakutat	0	1	0	1	0	13	3	18
Total	5,113	14,939	17,416	4,641	425	1,781	4,554	48,869
% of total	10.5	30.6	35.6	9.5	0.9	3.6	9.3	100.0
1st District	115	440	1,446	189	4	418	599	3,211
2nd District	12	16	40	20	0	54	160	302
3rd District	3,916	10,975	13,882	3,949	391	1,131	3,374	37,618
4th District	1,070	3,508	2,048	483	30	178	421	7,738

1. From April 30, 2021 – June 30, 2021, electronic reporting of minor offense citations was suspended.

The citations from this period have been included in the FY22 numbers.

2. St. Mary's court closed in 2016. Records for filings from the venue are still maintained separately.

**Table 5.26. Minor Offense Case Types
FY 22**

Equipment Equipment / Vehicles - Registrations, Defects and Misuse	Alcohol and Drug Controlled Substance Violations
Speeding	Fish and Game
Improper Driver Behavior Duties Failed — Requirements Not Met	Other Offenses Tickets with zero points added to record
Maneuvers — Illegal or Improper Failure to Obey Following Improperly Improper Lane or Location Passing Reckless, Careless or Negligent Driving Failure to Yield Failure to Signal Improper Turns Wrong Way or Side Miscellaneous Maneuvers	Littering Duty Failure Curfew Dog Tickets Tobacco Boat Safety

In FY07 the Alaska Court System changed the way it categorizes minor offenses for annual reporting. The traffic categories now conform to the American Association of Motor Vehicle Administrators (AAMVA) Code Dictionary. This change is intended to make Alaska statistics easier to compile, understand, and compare to those of other jurisdictions.



Sea ice in Kotzebue Sound (Second Judicial District)

Cover photograph: Fritz Cove, Juneau, 23 Feb 2022. Photo by Neil Nesheim. (Used by permission.)

Photos used with permission

The following photos are used without charge, including photos chosen from Creative Commons-licensed photos at Flickr (www.flickr.com). Creative Commons licensing information can be found at <http://creativecommons.org/licenses/>

Photo by Constance Baltuck, National Park Service (*nps_wear* on Flickr): page 1, Evening light on the Great Kobuk Sand Dunes, 10 Aug 2011. (Public domain.)

Photos by Melissa S. Green: page 16, Turnagain Arm and Kenai Mountains from Chugach foothills, Anchorage, 26 Sep 2003; page 55, Tall Jacob's ladder, Bishop's Beach, Homer, 25 Jul 2022. (Used by permission.)

Photo by Brian Henderson (*stinkenroboter* on Flickr): page 23, Sandhill cranes, Bishop's Beach, Homer, 16 Jul 2012. (Used in accordance with Creative Commons Attribution-NonCommercial 2.0 Generic (CC BY-NC 2.0) license.)

Photos by Ilya Katsnelson (*ilya_ktsn* on Flickr): page ii, Mushrooms, Gates of the Arctic National Park and Preserve, 1 Aug 2011; page 4, Snow on lichen, Gates of the Arctic National Park and Preserve, 29 Jul 2011. (Used in accordance with Creative Commons

Photos by Neil Nesheim: page 5, Sitka boat harbor, 3 Sep 2019; page 6, Bonaparte's gulls in flight, Lynn Canal, 26 Apr 2022; page 18, Steller's jay feather, Hoonah, 18 May 2015; page 24, Mountains in winter, Baranof Island, 16 Jan 2019; page 56, Petersburg small boat harbor, 2 Jun 2018; page 87, Steller sea lion, Auke Bay, 20 May 2022. (Used by permission.)

Photo by Cheryl Strahl (*cheryl_strahl* on Flickr): page v, Polar bears near Kaktovik, 28 Sep 2015. (Used in accordance with Creative Commons Attribution-NonCommercial 2.0 Generic (CC BY-NC 2.0) license.)

Photo by Daniel Voyager (*danielvoyager* on Flickr): page 17, Oil rig, Arctic National Wildlife Refuge, 5 Apr 2009. (Used in accordance with Creative Commons Attribution 2.0 Generic (CC BY 2.0) license.)



Steller sea lion, Auke Bay (First Judicial District)

Photo by Western Arctic National Parklands, National Park Service (*nps_wear* on Flickr): page 86, Sea ice in Kotzebue Sound, 31 May 2015. (Public domain.)

Photo by Zach (*zacz* on Flickr): page vi, Old boat, Kotzebue, 23 Jun 2008. (Used in accordance with Creative Commons Attribution-NonCommercial-NoDerivs 2.0 Generic (CC BY-NC-ND 2.0) license.)



Office of the Administrative Director
Alaska Court System
303 K Street
Anchorage, Alaska 99501
(907) 264-0548