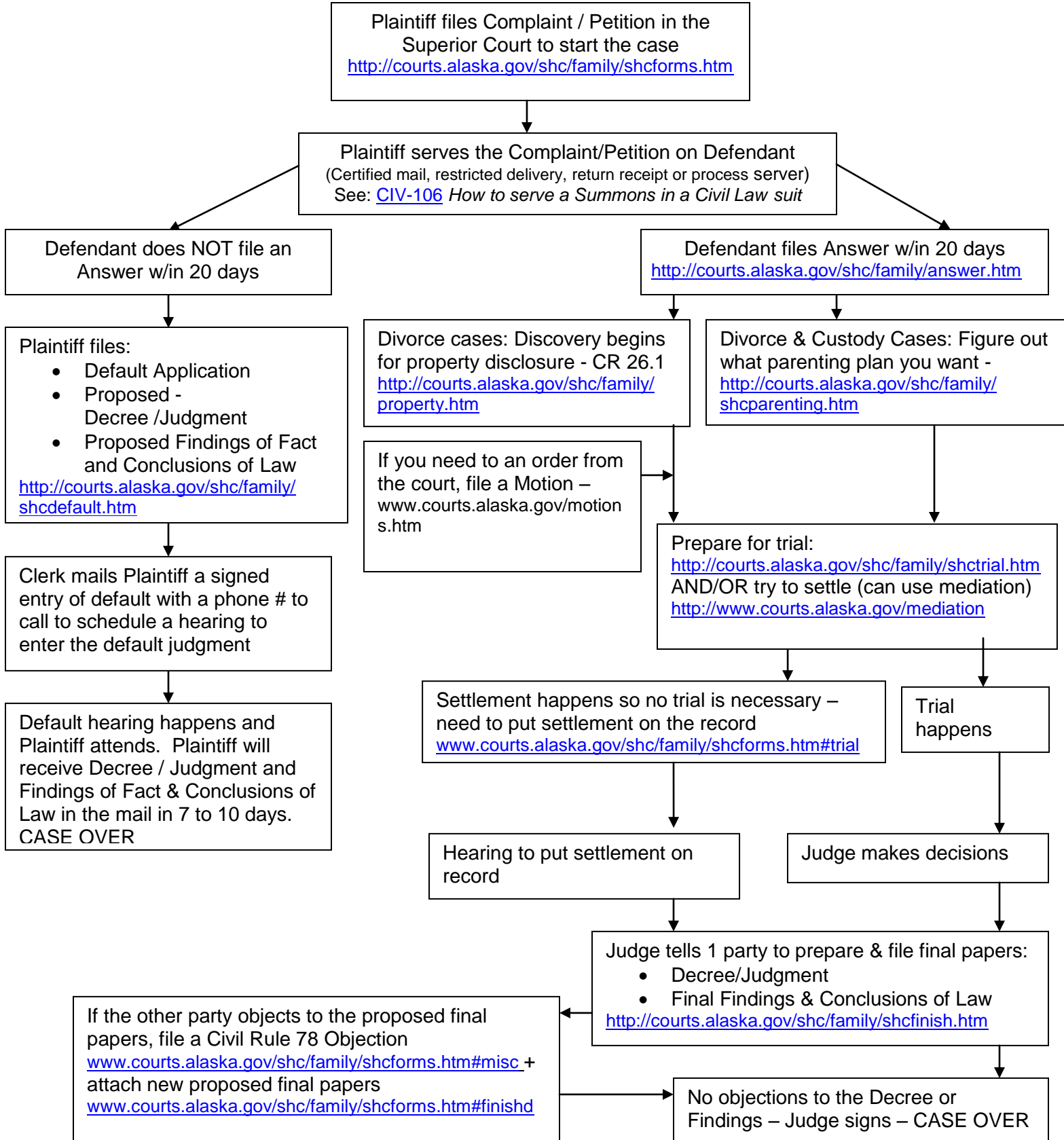


## Flow Chart for Process of Family Law Cases



**For more information, please visit the Family Law Self-Help website at**  
<http://courts.alaska.gov/shc/family/selfhelp.htm> **or call the Helpline at:**  
**264-0851 (in Anchorage) or 1 (866) 279-0851 (toll-free outside of Anchorage)**  
 SHC-185 (09/11)