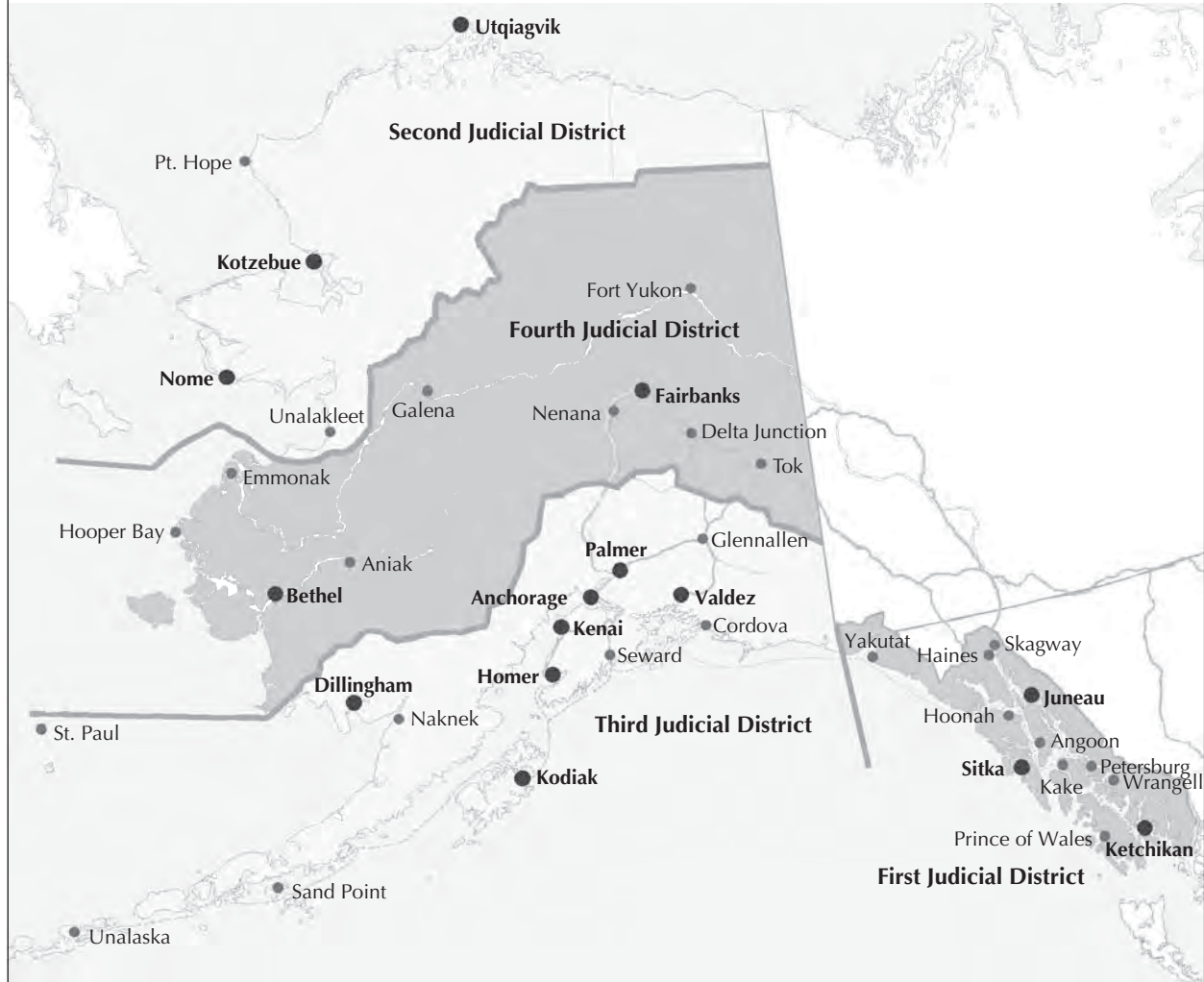




Alaska Court System Statistical Report FY 2020

July 1, 2019 – June 30, 2020

Alaska Court Locations, FY 2020



Alaska Court System Statistical Report FY 2020

July 1, 2019 – June 30, 2020



© Copyright 2020 by the Alaska Court System.

Layout and compositing by Melissa S. Green, Field of Words, Anchorage, AK.

A bookmarked PDF version of this statistical report is available on the Alaska Court System website at <http://www.courts.alaska.gov/admin/index.htm#annualrep>.



Wetlands along the Kobuk River (Second Judicial District)

Table of Statistical Tables and Figures

<i>Budgetary Overview</i>	1
Figure A. Alaska Court System Budget within State of Alaska FY20 Operating Budget	2
Figure B. Alaska Court System Budget in Total Justice-Related Operating Budget, FY20	3
<i>Appellate Courts</i>	5
Supreme Court Activity	7
Filings.....	7
Dispositions.....	7
Pending Caseload	7
Time Required for Disposition of Cases.....	7
Court of Appeals Activity	7
Filings.....	7
Dispositions.....	8
Pending Caseload	8
Note for Researchers.....	8
Alaska Supreme Court.....	9
Table 1.01. Alaska Supreme Court — Case Filings & Dispositions, FY 2016–2020.....	9
Table 1.02. Alaska Supreme Court — Motions and Petitions for Rehearing, FY 2016–2020	9
Table 1.03. Alaska Supreme Court — Caseload Summary, FY 2020	9
Table 1.04. Alaska Supreme Court — Dispositions by Manner of Disposition, FY 2020	10
Table 1.05. Alaska Supreme Court — Status of Cases Pending End of Year, FY 2020	10
Table 1.06. Alaska Supreme Court — Time to Disposition, FY 2020.....	11
Alaska Court of Appeals.....	13
Table 2.01. Alaska Court of Appeals — Case Filings & Dispositions, FY 2016–2020	13
Table 2.02. Alaska Court of Appeals — Motions and Petitions for Rehearing, FY 2016–2020.....	13
Table 2.03. Alaska Court of Appeals — Caseload Summary, FY 2020	13
Table 2.04. Alaska Court of Appeals — Dispositions by Manner of Disposition, FY 2020	14
Table 2.05. Alaska Court of Appeals — Status of Cases Pending End of Year, FY 2020.....	14
<i>Statewide Trial Courts</i>	15
Trial Court Activity	17
Filings.....	17
Dispositions.....	17
Explanatory Notes.....	17
Felony Filings.....	17
Criminal Case Categorization	17
Reopened Cases	17
Civil Protective Order Cases	18
Note for Researchers.....	18
Statewide Trial Courts	19
Table 3.01. Total Statewide Trial Court Case Filings FY20.....	19
Table 3.02. Population Trends by Court Site FY20.....	19

Superior Court Activity.....	21
Table 4.01. Total Superior Court Case Filings FY18–FY20	23
Table 4.02. Total Superior Court Case Dispositions FY18–FY20	24
Figure 4.01. Superior Court Filing and Disposition Trends FY18–FY20.....	25
Table 4.03. Superior Court Clearance Rates FY18–FY20	26
Table 4.04. Superior Court Filings by Case Type FY20.....	27
Figure 4.02. Composition of Superior Court Filings FY20.....	28
Figure 4.03. Superior Court Filing Trends by Case Type FY19–FY20	29
Table 4.05. Superior Court Dispositions by Case Type FY20.....	30
Table 4.06. Felony Case Filings FY18–FY20	31
Table 4.07. Felony Filings by Case Type FY20	32
Table 4.08. Criminal Case Types FY20	33
Table 4.09. Felony Case Dispositions FY18–FY20	34
Table 4.10. Felony Case Dispositions by Manner of Disposition FY20	35
Table 4.11. Post-judgment Filings: Felony Petitions to Revoke Probation FY18–FY20	36
Table 4.12. Probate Case Filings FY18–FY20	37
Table 4.13. Probate Filings by Case Type FY20	38
Table 4.14. Probate Case Dispositions FY18–FY20	39
Table 4.15. Domestic Relations Case Filings FY18–FY20	40
Table 4.16. Domestic Relations Filings by Case Type FY20	41
Table 4.17. Domestic Relations Case Dispositions FY18–FY20	42
Table 4.18. Domestic Relations Case Dispositions by Manner of Disposition FY20.....	43
Table 4.19. Post-judgment Filings: Motions to Modify Custody, Support or Visitation FY18–FY20	44
Table 4.20. Superior Court General Civil Case Filings FY18–FY20	45
Table 4.21. Superior Court General Civil Filings by Case Type FY20	46
Table 4.22. Superior Court General Civil Case Types FY20	47
Table 4.23. Superior Court General Civil Case Dispositions FY18–FY20	48
Table 4.24. Superior Court General Civil Case Dispositions by Manner of Disposition FY20.....	49
Table 4.25. CINA Case Filings FY18–FY20.....	50
Table 4.26. Delinquency Case Filings FY18–FY20	51
Table 4.27. CINA and Delinquency Filings by Case Type FY20	52
District Court Activity.....	53
Table 5.01. Total District Court Case Filings FY18–FY20	55
Table 5.02. Total District Court Case Dispositions FY18–FY20	56
Figure 5.01. District Court Filing and Disposition Trends FY18–FY20.....	57
Table 5.03. District Court Clearance Rates FY19–FY20	58
Table 5.04. District Court Filings by Case Type FY20	59
Figure 5.02. Composition of District Court Case Filings FY20	60
Figure 5.03. District Court Filing Trends by Case Type FY18–FY20.....	61
Table 5.05. District Court Dispositions by Case Type FY20	62
Table 5.06. District Court Non-Minor Offense Case Filings FY18–FY20	63
Table 5.07. District Court Non-Minor Offense Case Dispositions FY18–FY20	64
Table 5.08. Misdemeanor Case Filings FY18–FY20	65
Table 5.09. Misdemeanor Filings by Case Type FY20	66
Table 5.10. Criminal Case Types FY20	67

Table 5.11. Misdemeanor Case Dispositions FY18–FY20	68
Table 5.12. Misdemeanor Case Dispositions by Manner of Disposition FY20	69
Table 5.13. Felony Filings in District Court FY18–FY20.....	70
Table 5.14. Post-judgment Filings: Misdemeanor Petitions to Revoke Probation FY18–FY20	71
Table 5.15. Small Claims Case Filings FY18–FY20	72
Table 5.16. Small Claims Case Dispositions FY18–FY20.....	73
Table 5.17. Small Claims Case Dispositions by Manner of Disposition FY20	74
Table 5.18. Civil Protective Order Case Filings FY18–FY20.....	75
Table 5.19. Civil Protective Order Case Dispositions FY18–FY20.....	76
Table 5.20. District Court General Civil Case Filings FY18–FY20	77
Table 5.21. District Court General Civil Filings by Case Type FY20.....	78
Table 5.22. District Court General Civil Case Dispositions FY18–FY20.....	79
Table 5.23. District Court General Civil Case Dispositions by Manner of Disposition FY20	80
Table 5.24. Minor Offense Case Dispositions FY18–FY20.....	81
Table 5.25. Minor Offense Case Dispositions by Case Type FY20	82
Table 5.26. Minor Offense Case Types FY20	8
Photo Permissions.....	inside back cover



Snow bunting, Utqiagvik (Second Judicial District)

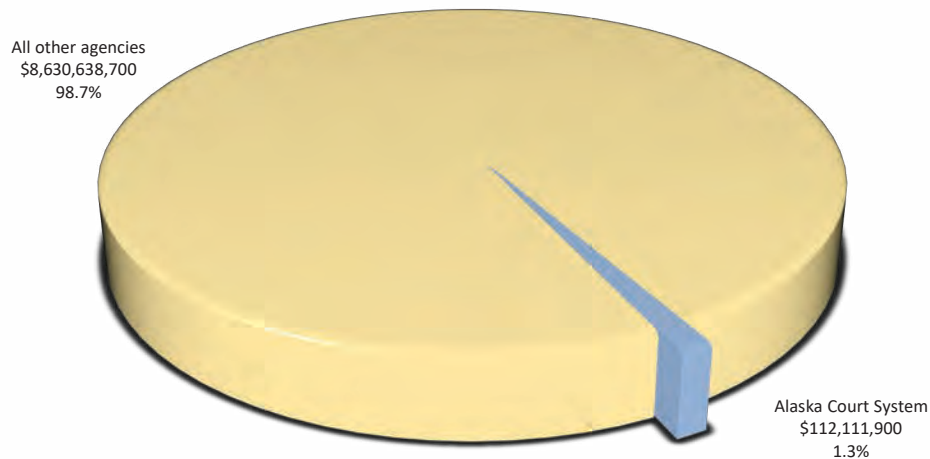


Stellar sea lion on channel marker off Admiralty Island (First Judicial District)



Budgetary Overview

Red pixie cup lichen, Yukon Delta National Wildlife Refuge (Fourth Judicial District)

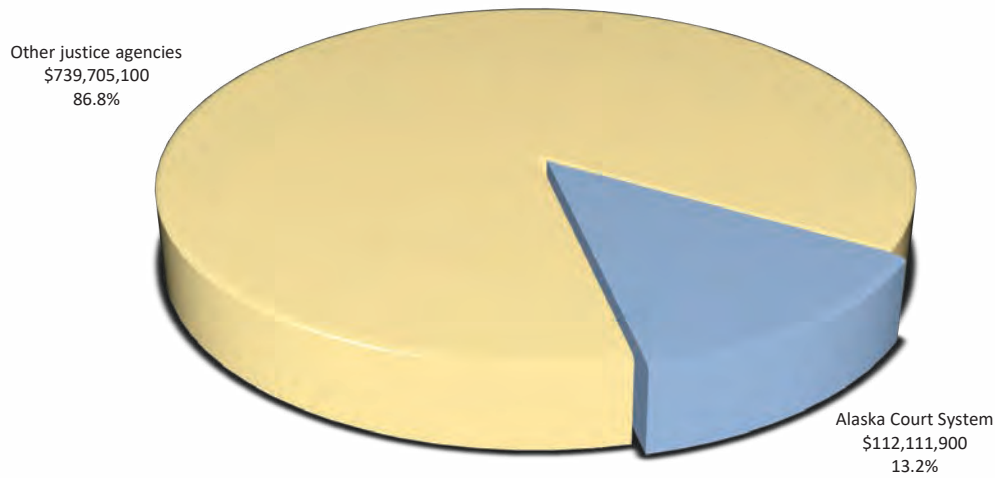
Figure A. Alaska Court System Budget within State of Alaska FY20 Operating Budget**FY20 State of Alaska Operating Budget by Agency**

Agency	Amount	Percentage of budget
Alaska Court System*	\$112,111,900	1.3 %
Alaska Legislature	\$66,340,700	0.8
Department of Administration	\$380,953,500	4.4
Department of Commerce, Community and Economic Development	\$171,839,300	2.0
Department of Corrections	\$378,762,800	4.3
Department of Education and Early Development	\$1,670,500,000	19.1
Department of Environmental Conservation	\$78,136,900	0.9
Department of Fish and Game	\$203,263,300	2.3
Department of Health and Social Services	\$3,127,981,900	35.8
Department of Labor and Workforce Development	\$150,588,700	1.7
Department of Law	\$88,930,400	1.0
Department of Military and Veteran Affairs	\$59,051,100	0.7
Department of Natural Resources	\$160,754,900	1.8
Department of Public Safety	\$215,529,200	2.5
Department of Revenue	\$398,972,900	4.6
Department of Transportation and Public Facilities	\$594,008,200	6.8
Office of the Governor	\$28,341,900	0.3
University of Alaska	\$856,683,000	9.8
Executive Branch-wide appropriations	\$0	0.0
Total	\$8,742,750,600	100.0 %

* Alaska Court System budget figure includes Alaska Judicial Council and Alaska Commission on Judicial Conduct.

Source of data: Alaska Legislative Finance Division — Operating Budget: Agency Summary, 2019 Legislature (22 Sep 2019)

<http://legfin.akleg.gov/BudgetReports/LY2019/Operating/Final/2020-AgencySummary.pdf>

Figure B. Alaska Court System Budget in Total Justice-Related Operating Budget, FY20**FY20 Alaska Justice Agencies Operating Budgets**

source of data: Alaska Legislative Finance Division

Agency	Amount	Percentage of budget
Alaska Court System*	\$112,111,900	13.2 %
Department of Corrections	\$378,762,800	44.5
Department of Law	\$88,930,400	10.4
Department of Public Safety	\$215,529,200	25.3
Public Defender Agency	\$28,387,000	3.3
Office of Public Advocacy	\$28,095,700	3.3
Total	\$851,817,000	100.0 %

* Alaska Court System budget figure includes Alaska Judicial Council and Alaska Commission on Judicial Conduct.

Source of data: Alaska Legislative Finance Division — Operating Budget: Agency Summary, 2019 Legislature (22 Sep 2019)

<http://legfin.akleg.gov/BudgetReports/LY2019/Operating/Final/2020-AgencySummary.pdf>

<http://legfin.akleg.gov/BudgetReports/LY2019/Operating/Final/ALL-AllocationTotal.pdf>



River oxbows, Yukon Delta National Wildlife Refuge (Fourth Judicial District)



Bar-tailed godwit, Yukon Delta National Wildlife Refuge (Fourth Judicial District)



Juneau pier (First Judicial District)

Appellate Courts

Supreme Court Activity

Filings

During FY 2020, 308 cases were filed in the Supreme Court, a 13 percent decrease from the total filed in FY 2019. The number of appeals filed was up 19 percent from the previous year; petitions for hearing decreased by 39 percent; and petitions for review decreased by 50 percent. The category that includes bar matters, federal certification matters, and original applications decreased 26 percent from the previous year. For details about filings in various categories of cases from FY 2016 through FY 2020, see page 9.

Dispositions

The Supreme Court disposed of 318 cases in FY 2020, a 26 percent decrease from FY 2019. The court issued 83 full opinions, 48 MO&Js, and 5 published orders. For details about dispositions by case type in FY 2020, see page 10. For comparisons of dispositions by case type from FY 2016 through FY 2020, see page 9.

Pending Caseload

On June 30, 2020, 285 cases were pending, a less than one-percent decrease from the end of FY 2019. About 64 percent of these pending cases were at a stage prior to submission to the court (filing pending, awaiting settlement conference, awaiting record or transcripts, awaiting briefs, awaiting argument or conference, or awaiting response to a petition). About 7 percent were stayed or were awaiting rehearing or record return prior to closing, and the remaining 29 percent were under advisement (submitted to the court but awaiting circulation of a draft opinion, publication of an opinion, or decision on a petition). For a comparison of cases pending at year's end according to case type from FY 2016 through FY 2020, see page 9. For the status of cases pending at the end of FY 2020 according to case type, see page 10.

Time Required for Disposition of Cases

In 50 percent of appeals decided by opinion or MO&J, the time from submission (usually the date of oral argument or conference on the briefs) to publication of a decision was 5.1 months or less. Fifty percent of petitions, bar matters, and original applications were completed (from opening to closing) in 1.9 months or less. Additional information about time to disposition can be found at page 11.

Court of Appeals Activity

Filings

During FY 2020, 228 cases were filed in the Court of Appeals, an 11 percent decrease from the total filed in FY 2019. Merit appeal filings decreased by 3 percent from the previous year, while sentence appeal filings were down 35 percent. Petition for review and petition for hearing filings decreased by 31 percent, and original application and bail appeal filings decreased by 27 percent from FY 2019. For a comparison of filings in various case categories from FY 2016 through FY 2020, see page 13.

Dispositions

The Court of Appeals disposed of 302 cases in FY 2020. This was a 12 percent decrease from FY 2019. The court issued 19 full opinions, 165 memorandum opinions and summary dispositions, and 2 published orders. For details about the types and caseload composition of dispositions in FY 2019, see page 14. For comparisons of dispositions by case type from FY 2016 through FY 2020, see page 13.

Pending Caseload

On June 30, 2020, 572 cases were pending before the Court of Appeals. Eighty-three percent of these cases were at a stage prior to submission to the court (filing pending, awaiting record, awaiting briefing, awaiting oral argument, or awaiting response to a petition). Four percent were stayed or remanded or awaiting rehearing or record return prior to closing; and the remaining 13 percent were under advisement (submitted to the court but awaiting circulation of a draft opinion, publication of an opinion, or a decision on a petition). For a comparison of cases pending at year's end according to case type from FY 2016 through FY 2020, see page 13. For the status of cases pending at the end of FY 2020 according to case type, see page 14.

Note for Researchers

Readers and researchers should be aware that occasional changes in the manner in which cases are reported or recorded by the Alaska Court System may account for some changes over time in case filing totals for specific courts or jurisdictions. While the court system attempts to make the data tables in the annual report as consistent as possible from year to year, care is necessary, especially when discerning trends or making comparisons between time periods.

Alaska Supreme Court

**Table 1.01. Alaska Supreme Court — Case Filings & Dispositions,
FY 2016–2020**

	FY16	FY17	FY18	FY19	FY20
Filings					
Civil appeals	206	224	193	166	197
Petitions for hearing	98	94	109	114	70
Petitions for review	74	57	61	54	27
Bar/original applications	19	15	19	19	14
Total	397	390	382	353	308
Dispositions					
Civil appeals	232	186	180	238	188
Petitions for hearing	104	81	114	109	88
Petitions for review	63	63	61	62	24
Bar/original applications	23	14	16	22	18
Total	422	344	371	431	318
Published					
Full opinions	95	71	72	126	83
Memorandum opinions	45	49	43	45	48
Published orders	9	4	6	3	5
Total	149	124	121	174	136
Pending end-of-year					
Civil appeals	249	285	304	231	241
Petitions for hearing	24	37	34	36	23
Petitions for review	31	21	21	11	15
Bar/original applications	9	9	9	9	6
Total	313	352	368	287	285

**Table 1.02. Alaska Supreme Court — Motions and Petitions for Rehearing,
FY 2016–2020**

	FY16	FY17	FY18	FY19	FY20
Filings					
Petitions for rehearing	23	18	24	34	27
Full court motions	42	43	67	68	58
Individual justice motions	950	991	986	930	880
Routine (clerk) motions	442	466	390	473	490
Total	1,457	1,518	1,467	1,505	1,455
Dispositions					
Petitions for rehearing	24	15	23	34	27
Full court motions	44	44	61	74	59
Individual justice motions	907	979	950	884	928
Routine (clerk) motions	405	420	348	466	487
Total	1,380	1,458	1,382	1,458	1,501
Pending end-of-year					
Petitions for rehearing	2	4	1	2	2
Full court motions	2	4	12	4	3
Individual justice motions	95	58	58	82	43
Routine (clerk) motions	37	50	47	21	13
Total	136	116	118	109	66

Table 1.03. Alaska Supreme Court — Caseload Summary, FY 2020

	Civil appeals	Petitions for hearing	Petitions for review	Bar/original applications	Total
Pending beginning of year	231	36	11	9	287
Filings	197	70	27	14	308
Dispositions	188	88	24	18	318
Pending end of year	241	23	15	6	285

Table 1.04. Alaska Supreme Court — Dispositions by Manner of Disposition, FY 2020

	Civil appeals	Petitions for hearing	Petitions for review	Bar/ original application/ federal certified questions	Total all cases
Dispositions by published opinions					
Affirmed	38	1	1	1	41
Reversed or vacated	28	1	3	1	33
Affirmed in part/reversed in part	7	0	0	0	7
Other (dismissed, etc.)	1	0	0	1	2
Total	74	2	4	3	83
Summary dispositions on merits (memorandum opinions & summary orders)					
Affirmed	41	0	0	1	42
Reversed or vacated	6	0	0	0	6
Affirmed in part/Reversed in part	2	0	0	0	2
Other (dismissed, etc.)	2	0	0	1	3
Total	51	0	0	2	53
Petitions/applications granted		1	2	5	8
Total dispositions on merits	125	3	6	10	144
Petition denials/orders not on merits	4	65	14	1	84
Dismissals					
Stipulated to or by Appellant	35	14	2	5	56
On Motion of Appellee	1	1	1	2	5
<i>Sua Sponte</i> *	23	5	1	0	29
Total dispositions not on merits	63	85	18	8	174
Total dispositions	188	88	24	18	318

* *Sua Sponte* means orders issued by the court without motion by a party.**Table 1.05. Alaska Supreme Court — Status of Cases Pending End of Year, FY 2020**

	Civil appeals	Petitions for hearing	Petitions for review	Bar/ original application/ federal certified questions	Total all cases
Filing pending	6	6	3	0	15
Awaiting settlement conference	0	0	0	0	0
Awaiting records/transcript	55	0	0	0	55
Awaiting briefs	57	1	6	3	67
Awaiting argument/conference	32	3	1	3	39
Awaiting draft opinion	40	1	0	0	41
Draft opinion circulating	37	5	1	0	43
Awaiting petition response	0	4	1	0	5
Awaiting petition decision	0	0	0	0	0
Awaiting rehearing/record return	2	0	0	0	2
Stayed or remanded	12	3	3	0	18
Total	241	23	15	6	285

Table 1.06. Alaska Supreme Court — Time to Disposition, FY 2020

Appeals decided by opinion or memorandum opinion & judgment (MO&J)*				Petitions, bar matters, original applications***			
	Percentile	Days	Months		Percentile	Days	Months
Pre-submission to Court				File open — file closed	50%	56	1.9
					75%	89	3.0
					90%	143	4.8
Notice of appeal to record certification	50%	39	1.3	*** This includes all petitions, bar matters, and original applications closed during the FY, whether by regular order or dismissal, except those that were granted and thereafter went through the full briefing process, ending in an opinion.			
	75%	55	1.8				
	90%	91	3.0				
Record certification to last brief	50%	214	7.1				
	75%	286	9.5				
	90%	408	13.6				
Last brief to submission**	50%	80	2.7				
	75%	107	3.6				
	90%	178	5.9				
Subtotal: Number of days/month before submission to the court	50%	348	11.6				
	75%	446	14.9				
	90%	572	19.1				
Submission to publication							
Submission to circulation	50%	96	3.2				
of draft opinion or recommendation	75%	145	4.8				
	90%	185	6.2				
Circulation of draft opinion or recommendation to publication	50%	51	1.7				
	75%	88	2.9				
	90%	149	5.0				
Subtotal: Number of days/months from submission to publication	50%	152	5.1				
	75%	240	8.0				
	90%	307	10.2				
Post-publication motions							
Publication to closing	50%	23	0.8				
	75%	41	1.4				
	90%	78	2.6				
Total time from open to close							
	50%	584	19.5				
	75%	752	25.1				
	90%	901	30.0				

* This includes appeals closed during the FY that resulted in a published opinion or memorandum opinion & judgment; appeals that ended by dismissal or other closure are not included.

** "Submission" is usually the date of oral argument or conference on the case, but can be later in circumstances such as reassignment to a different chambers, or reconference by the court.

*** This includes all petitions, bar matters, and original applications closed during the FY, whether by regular order or dismissal, except those that were granted and thereafter went through the full briefing process, ending in an opinion.

Alaska Court of Appeals

Table 2.01. Alaska Court of Appeals — Case Filings & Dispositions, FY 2016–2020

	FY16	FY17	FY18	FY19	FY20
Filings					
Merit appeals	232	183	233	182	177
Sentence appeals	46	32	26	23	15
Petitions	30	34	33	36	25
Original applications/bail appeals	5	4	7	15	11
Total	313	253	299	256	228
Dispositions					
Merit appeals	222	216	235	256	236
Sentence appeals	36	39	31	39	28
Petitions	33	25	36	38	25
Original applications/bail appeals	3	4	8	11	13
Total	294	284	310	344	302
Published					
Full opinions	47	52	47	42	19
Memorandum opinions*	158	131	161	208	165
Published orders	0	0	0	0	2
Total	205	183	208	250	186
Pending end-of-year					
Merit appeals	673	645	640	572	513
Sentence appeals	77	70	69	56	43
Petitions	9	19	12	7	12
Original applications/bail appeals	3	2	2	2	4
Total	762	736	723	637	572

*This number includes summary dispositions, which the court of appeals began issuing on March 6, 2019.

Table 2.02. Alaska Court of Appeals — Motions and Petitions for Rehearing, FY 2016–2020

	FY16	FY17	FY18	FY19	FY20
Filings					
Petitions for rehearing	14	27	20	9	7
Full court motions	85	118	114	121	149
Individual judge motions	532	255	184	490	497
Routine (clerk) motions	1,346	1,351	1,295	867	664
Total	1,977	1,751	1,613	1,487	1,317
Dispositions					
Petitions for rehearing	14	15	27	9	11
Full court motions	53	72	116	124	144
Individual judge motions	1,170	525	260	493	515
Routine (clerk) motions	997	1,329	1,322	869	695
Total	2,234	1,941	1,725	1,495	1,365
Pending end-of-year					
Petitions for rehearing	8	3	5	3	0
Full court motions	5	7	10	6	11
Individual judge motions	64	68	10	31	45
Routine (clerk) motions	59	26	56	43	26
Total	136	104	81	83	82

Table 2.03. Alaska Court of Appeals — Caseload Summary, FY 2020

	Merit appeals	Sentence appeals	Petitions	Bail appeals/ original applications	Total
Pending beginning of year	572	56	7	2	637
Filings	177	15	25	11	228
Dispositions	236	28	25	13	302
Pending end of year	513	43	12	4	572

Table 2.04. Alaska Court of Appeals — Dispositions by Manner of Disposition, FY 2020

	Merit appeals	Sentence appeals	Petitions	Bail appeals/ original applications	Total
Dispositions by published opinions					
Affirmed	9	1	0	0	10
Reversed or vacated	7	0	0	1	8
Affirmed in part/reversed in part	1	0	1	0	2
Other (dismissed, etc.)	1	0	0	0	1
Total	18	1	1	1	21
Summary dispositions on merits (memorandum opinions & summary orders)					
Affirmed	115	11	0	0	126
Reversed or vacated	19	5	0	0	24
Affirmed in part/Reversed in part	8	2	0	0	10
Other (dismissed, etc.)	4	1	0	0	5
Total	146	19	0	0	165
Petitions/applications granted			5	4	9
Total dispositions on merits	164	20	6	5	195
Petition denials/orders not on merits	5	0	10	0	15
Dismissals					
Stipulated to or by appellant	45	7	8	6	66
On motion of appellee	0	0	0	0	0
<i>Sua Sponte</i> *	22	1	1	2	26
Total dispositions not on merits	72	8	19	8	107
Total dispositions	236	28	25	13	302

* *Sua Sponte* means orders issued by the court without motion by a party.

Table 2.05. Alaska Court of Appeals — Status of Cases Pending End of Year, FY 2020

	Merit appeals	Sentence appeals	Petitions	Bail appeals/ original applications	Total
Filing pending	1	0	0	0	1
Awaiting records/transcript	84	6	3	0	93
Briefing stage	228	10	2	1	241
Awaiting argument/conference	120	18	1	1	140
Awaiting draft opinion	18	2	0	0	20
Draft opinion circulating	42	6	2	0	50
Awaiting petition response	0	0	2	0	2
Awaiting petition decision	0	0	1	2	3
Awaiting rehearing/record return	15	1	1	0	17
Stayed or remanded	5	0	0	0	5
Total	513	43	12	4	572



Knik River ice (Third Judicial District)



Kayaks and lodge, Icy Straight Point, Hoonah (First Judicial District)

Statewide Trial Courts

Trial Court Activity

Filings

During FY20, 120,929 cases were filed in the trial courts, an increase of 1.1 percent from 119,630 filings in FY19.

The FY20 Superior Court filings were 22,888, a decrease of 2.2 percent from 23,402 filings in FY19. CINA filings increased by 5.2 percent, felony filings increased by 2.5 percent, and general civil filings increased by 0.9 percent. Delinquency filings decreased by 21.7 percent, domestic relations filings decreased by 7.1 percent, and probate filings decreased by 6.1 percent.

The FY20 District Court filings were 98,041, an increase of 1.9 percent from 96,228 filings in FY19. General civil filings decreased by 21.7 percent, small claims filings decreased by 6.9, and misdemeanor filings decreased by 6.7 percent. Minor offense filings increased by 11.4 percent and civil protective order filings increased by 0.1 percent.

Dispositions

The trial courts disposed of 117,647 cases in FY20, an increase of 3.7 percent from the 113,442 dispositions reported in FY19. To avoid a backlog of cases awaiting disposition, courts aspire to have a clearance rate of 100 percent or higher, meaning that they have cleared (i.e., disposed of) at least as many cases as were filed during the period. The clearance rate for trial court cases was 97 percent in FY20.

Explanatory Notes

Felony Filings

Most felony cases are initiated in District Court and then transferred to Superior Court after indictment by a grand jury or the filing of an information. Since most of the activity in a felony case typically occurs in the Superior Court, felony cases are reported as Superior Court filings regardless of whether they were initiated in District Court or in the Superior Court. A table showing the number of felony cases initiated in the District Court is provided for informational purposes (Table 5.13, page 70). To avoid double counting, these filings are not included in the District Court filing totals, but should be considered when evaluating the **workload** of a District Court.

Criminal Case Categorization

Criminal cases are categorized based on the most serious charge at filing. For example, if a defendant is charged with a felony and two misdemeanors, the case is counted as a felony. If the felony charge is subsequently reduced to a misdemeanor, the case type does not change; the case is still categorized as a felony for reporting purposes.

Reopened Cases

The criminal filing statistics in this report include only new case filings and do not include petitions to revoke probation or other proceedings that cause the court to reopen a criminal case. Likewise, the

domestic relations filing statistics include only new case filings and do not include post-judgment motions to modify custody, support or visitation. Because this post-judgment activity significantly impacts the trial court workload, tables showing this activity are provided for informational purposes. The number of petitions to revoke probation in felony and misdemeanor cases can be found in Tables 4.11 and 5.14 ((pages 36 and 71). The number of filings of motions to modify custody, support, or visitation can be found in Table 4.19 (page 44).

Civil Protective Order Cases

The civil protective order case group includes petitions for domestic violence, stalking, and sexual assault protective orders. These cases may be filed in either District or Superior Court, but District Courts handle the vast majority. Because readers and researchers often want to know the total number of civil protective order cases that were filed, domestic violence, stalking, and sexual assault protective order cases filed in the Superior Court are counted with the District Court cases.

Note for Researchers

Readers and researchers should be aware that occasional changes in the manner in which cases are reported or recorded by the Alaska Court System may account for some changes over time in case filing totals for specific courts or jurisdictions. While the court system attempts to make the data tables in the annual report as consistent as possible from year to year, care is necessary, especially when discerning trends or making comparisons between time periods.

Statewide Trial Courts

**Table 3.01. Total Statewide Trial Court Case Filings
FY 20**

Court	Superior Court		District Court				Total	
	Filings	% of Superior Court total	Non-minor offense filings	Minor offense filings	Total filings	% of District Court total	Filings	% of statewide total
Anchorage	10,480	45.8%	18,153	24,243	42,396	43.2%	52,876	43.7%
Angoon	1	0.0%	16	4	20	0.0%	21	0.0%
Aniak	64	0.3%	144	27	171	0.2%	235	0.2%
Bethel	825	3.6%	1,630	184	1,814	1.9%	2,639	2.2%
Cordova	25	0.1%	67	63	130	0.1%	155	0.1%
Delta Junction	39	0.2%	107	259	366	0.4%	405	0.3%
Dillingham	272	1.2%	459	278	737	0.8%	1,009	0.8%
Emmonak	104	0.4%	269	20	289	0.3%	393	0.3%
Fairbanks	2,645	11.6%	5,058	6,386	11,444	11.7%	14,089	11.7%
Fort Yukon	23	0.1%	56	6	62	0.1%	85	0.1%
Galena	18	0.1%	49	10	59	0.1%	77	0.1%
Glennallen	52	0.2%	137	284	421	0.4%	473	0.4%
Haines	5	0.0%	70	138	208	0.2%	213	0.2%
Homer	314	1.4%	658	1,041	1,699	1.7%	2,013	1.7%
Hoonah	7	0.0%	52	17	69	0.1%	76	0.1%
Hooper Bay	53	0.2%	214	10	224	0.2%	277	0.2%
Juneau	1,072	4.7%	2,332	2,084	4,416	4.5%	5,488	4.5%
Kake ¹			Served by Petersburg					
Kenai	1,320	5.8%	2,243	5,054	7,297	7.4%	8,617	7.1%
Ketchikan	507	2.2%	1,288	586	1,874	1.9%	2,381	2.0%
Kodiak	361	1.6%	572	623	1,195	1.2%	1,556	1.3%
Kotzebue	371	1.6%	567	92	659	0.7%	1,030	0.9%
Naknek	65	0.3%	247	74	321	0.3%	386	0.3%
Nenana	42	0.2%	181	2,693	2,874	2.9%	2,916	2.4%
Nome	375	1.6%	820	393	1,213	1.2%	1,588	1.3%
Palmer	2,523	11.0%	4,622	7,459	12,081	12.3%	14,604	12.1%
Petersburg	63	0.3%	195	103	298	0.3%	361	0.3%
Prince of Wales	140	0.6%	358	280	638	0.7%	778	0.6%
Sand Point	26	0.1%	71	38	109	0.1%	135	0.1%
Seward	146	0.6%	271	1,502	1,773	1.8%	1,919	1.6%
Sitka	245	1.1%	496	375	871	0.9%	1,116	0.9%
Skagway	1	0.0%	11	2	13	0.0%	14	0.0%
St. Mary's ²	88	0.4%	187	6	193	0.2%	281	0.2%
St. Paul	7	0.0%	12	0	12	0.0%	19	0.0%
Tok	39	0.2%	100	238	338	0.3%	377	0.3%
Unalakleet	69	0.3%	71	33	104	0.1%	173	0.1%
Unalaska	48	0.2%	119	197	316	0.3%	364	0.3%
Utqiagvik	323	1.4%	689	77	766	0.8%	1,089	0.9%
Valdez	84	0.4%	195	145	340	0.4%	424	0.4%
Wrangell	44	0.2%	110	50	160	0.2%	204	0.2%
Yakutat	2	0.0%	20	51	71	0.1%	73	0.1%
Total	22,888	100.0%	42,916	55,125	98,041	100.0%	120,929	100.0%
1st District	2,087	9.1%	4,948	3,690	8,638	8.8%	10,725	8.9%
2nd District	1,138	5.0%	2,147	595	2,742	2.8%	3,880	3.2%
3rd District	15,723	68.7%	27,826	41,001	68,827	70.2%	84,550	69.9%
4th District	3,940	17.2%	7,995	9,839	17,834	18.2%	21,774	18.0%

1. Kake court closed in October 2018.

2. St. Mary's court closed in 2016. Records for filings from the venue are still maintained separately.

**Table 3.02. Population Trends by Court Site
FY 20**

Court	Population served by court site*			Change 2000–2019		Change 2010–2019		% of statewide total
	2000	2010	2019	Number	Percent	Number	Percent	
Anchorage	261,634	292,256	292,354	30,720	11.7%	98	0.0%	40.0%
Angeon	572	459	404	-168	-29.4%	-55	-12.0%	0.1%
Aniak	2,296	1,948	2,304	8	0.3%	356	18.3%	0.3%
Bethel	13,353	15,605	16,808	3,455	25.9%	1,203	7.7%	2.3%
Chevak ¹	2,257	1,421	Served by Hooper Bay	N/S	N/S	N/S	N/S	N/S
Cordova	2,454	2,239	2,343	-111	-4.5%	104	4.6%	0.3%
Delta Junction	3,942	5,017	5,032	1,090	27.7%	15	0.3%	0.7%
Dillingham	4,922	4,847	4,887	-35	-0.7%	40	0.8%	0.7%
Emmonak	2,185	2,203	2,402	217	9.9%	199	9.0%	0.3%
Fairbanks	83,074	97,781	96,070	12,996	15.6%	-1,711	-1.7%	13.1%
Fort Yukon	1,289	1,165	1,102	-187	-14.5%	-63	-5.4%	0.1%
Galena	2,016	1,461	1,369	-647	-32.1%	-92	-6.3%	0.2%
Glennallen	3,231	3,037	2,837	-394	-12.2%	-200	-6.6%	0.4%
Haines	2,531	2,591	2,595	64	2.5%	4	0.2%	0.4%
Homer	12,736	13,899	14,969	2,233	17.5%	1,070	7.7%	2.0%
Hoonah ²	1,011	914	1,582	571	56.5%	668	73.1%	0.2%
Hooper Bay	1,071	1,112	2,872	1,801	168.2%	1,760	158.3%	0.4%
Juneau	31,365	31,860	31,986	621	2.0%	126	0.4%	4.4%
Kake ¹	710	557	Served by Petersburg	-710	-100.0%	-557	-100.0%	0.0%
Kenai	31,365	35,902	37,790	6,425	20.5%	1,888	5.3%	5.2%
Ketchikan	15,635	14,969	15,176	-459	-2.9%	207	1.4%	2.1%
Kodiak	13,913	13,592	13,001	-912	-6.6%	-591	-4.3%	1.8%
Kotzebue	7,208	8,197	7,951	743	10.3%	-246	-3.0%	1.1%
McGrath ¹	602	505	Served by Aniak	N/S	N/S	N/S	N/S	N/S
Naknek	3,081	2,628	2,491	-590	-19.1%	-137	-5.2%	0.3%
Nenana	3,280	3,297	3,434	154	4.7%	137	4.2%	0.5%
Nome	6,694	7,264	7,480	786	11.7%	216	3.0%	1.0%
Palmer	59,322	88,995	106,438	47,116	79.4%	17,443	19.6%	14.6%
Petersburg ²	3,506	3,266	3,837	331	9.4%	571	17.5%	0.5%
Prince of Wales ³	4,483	4,008	4,089	-394	-8.8%	81	2.0%	0.6%
Sand Point	952	2,114	1,948	996	104.6%	-166	-7.9%	0.3%
Seward	5,539	5,465	5,440	-99	-1.8%	-25	-0.5%	0.7%
Sitka	9,111	9,041	8,669	-442	-4.9%	-372	-4.1%	1.2%
Skagway	862	968	1,095	233	27.0%	127	13.1%	0.1%
St. Mary's ⁴	2,586	2,723	2,906	320	12.4%	183	6.7%	0.4%
St. Paul	684	581	444	-240	-35.1%	-137	-23.6%	0.1%
Tanana ¹	308	246	Served by Nenana	N/S	N/S	N/S	N/S	N/S
Tok	2,232	2,012	1,862	-370	-16.6%	-150	-7.5%	0.3%
Unalakleet	2,502	2,228	2,351	-151	-6.0%	123	5.5%	0.3%
Unalaska	5,494	6,007	6,125	631	11.5%	118	2.0%	0.8%
Utgavik⁵	7,385	8,756	9,650	2,265	30.7%	894	10.2%	1.3%
Valdez	4,242	4,064	3,974	-268	-6.3%	-90	-2.2%	0.5%
Wrangell	2,488	2,369	2,400	-88	-3.5%	31	1.3%	0.3%
Yakutat	808	662	540	-268	-33.2%	-122	-18.4%	0.1%
Total	626,931	710,231	731,007	104,076	16.6%	20,776	2.9%	100.0%
1st District	73,082	71,664	72,373	-709	-1.0%	709	1.0%	9.9%
2nd District	23,789	26,445	27,432	3,643	15.3%	987	3.7%	3.8%
3rd District	409,569	475,626	495,041	85,472	20.9%	19,415	4.1%	67.7%
4th District	120,491	136,496	136,161	15,670	13.0%	-335	-0.2%	18.6%

* Population of the communities served by each court site are taken from U.S. Census.

Note: This table is comparable to Table 6.01 on page 153 of the FY17 annual report.

N/S: Numbers 10 or less are not compared statistically.

1. Chevak court closed in FY 2014; McGrath and Tanana courts closed in FY 2015; Kake court closed in October 2018.

2. Beginning with FY 2019, the Petersburg venue population includes the population previously covered by Kake. The Hoonah population now includes the population numbers for Gustavus, Tenakee Springs, and Excursion Inlet, which were previously included within the Juneau venue population.

3. Craig court was renamed Prince of Wales in FY 2016.

4. St. Mary's court closed in 2016. Records for filings from the venue are still maintained separately.

5. The community of Barrow changed its name to Utqavik in 2016.



*Superior Court
Activity*

Coastal sedge meadow, Yukon Delta National Wildlife Refuge (Fourth Judicial District)



Valdez Small Boat Harbor (Third Judicial District)

**Table 4.01. Total Superior Court Case Filings
FY 18 – FY 20**

Court	FY 18	FY 19	FY 20	Change	
				FY 18 to FY 20	FY 19 to FY 20
Anchorage	11,461	10,977	10,480	-9%	-5%
Angoon	0	2	1	N/S	N/S
Aniak	51	64	64	25%	0%
Bethel	756	768	825	9%	7%
Cordova	27	28	25	-7%	-11%
Delta Junction	37	47	39	5%	-17%
Dillingham	210	239	272	30%	14%
Emmonak	79	105	104	32%	-1%
Fairbanks	2,771	2,760	2,645	-5%	-4%
Fort Yukon	27	26	23	-15%	-12%
Galena	17	24	18	6%	-25%
Glennallen	54	66	52	-4%	-21%
Haines	6	6	5	N/S	N/S
Homer	332	300	314	-5%	5%
Hoonah	3	2	7	N/S	N/S
Hooper Bay	52	48	53	2%	10%
Juneau	1,286	1,148	1,072	-17%	-7%
Kake ¹	3	0	Served by Petersburg	N/S	N/S
Kenai	1,256	1,427	1,320	5%	-7%
Ketchikan	620	580	507	-18%	-13%
Kodiak	301	312	361	20%	16%
Kotzebue	480	440	371	-23%	-16%
Naknek	59	59	65	10%	10%
Nenana	49	51	42	-14%	-18%
Nome	355	361	375	6%	4%
Palmer	2,398	2,340	2,523	5%	8%
Petersburg	70	63	63	-10%	0%
Prince of Wales	118	94	140	19%	49%
Sand Point	31	20	26	-16%	30%
Seward	147	141	146	-1%	4%
Sitka	267	250	245	-8%	-2%
Skagway	2	1	1	N/S	N/S
St. Mary's ²	63	62	88	40%	42%
St. Paul	12	9	7	N/S	N/S
Tok	42	47	39	-7%	-17%
Unalakleet	71	76	69	-3%	-9%
Unalaska	48	48	48	0%	0%
Utgavik	359	297	323	-10%	9%
Valdez	70	59	84	20%	42%
Wrangell	58	49	44	-24%	-10%
Yakutat	0	6	2	N/S	N/S
Total	24,048	23,402	22,888	-5%	-2%
1st District	2,433	2,201	2,087	-14%	-5%
2nd District	1,265	1,174	1,138	-10%	-3%
3rd District	16,406	16,025	15,723	-4%	-2%
4th District	3,944	4,002	3,940	0%	-2%

N/S: Numbers 10 or less are not compared statistically.

1. Kake court closed in October 2018.

2. St. Mary's court closed in 2016. Records for filings from the venue are still maintained separately.

**Table 4.02. Total Superior Court Case Dispositions
FY 18 – FY 20**

Court	FY 18	FY 19	FY 20	Change	
				FY 18 to FY 20	FY 19 to FY 20
Anchorage	11,016	10,765	9,120	-17%	-15%
Angoon	0	0	2	N/S	N/S
Aniak	56	50	47	-16%	-6%
Bethel	704	679	704	0%	4%
Cordova	30	29	32	7%	10%
Delta Junction	34	34	40	18%	18%
Dillingham	184	191	178	-3%	-7%
Emmonak	61	81	75	23%	-7%
Fairbanks	2,726	2,389	2,437	-11%	2%
Fort Yukon	25	16	20	-20%	25%
Galena	14	23	21	50%	-9%
Glennallen	54	55	49	-9%	-11%
Haines	5	6	6	N/S	N/S
Homer	312	320	245	-21%	-23%
Hoonah	1	4	3	N/S	N/S
Hooper Bay	42	59	32	-24%	-46%
Juneau	1,215	1,094	890	-27%	-19%
Kake ¹	3	0	Served by Petersburg	N/S	N/S
Kenai	1,136	1,104	1,096	-4%	-1%
Ketchikan	537	580	510	-5%	-12%
Kodiak	249	275	278	12%	1%
Kotzebue	412	346	355	-14%	3%
Naknek	58	61	49	-16%	-20%
Nenana	33	42	48	45%	14%
Nome	344	325	293	-15%	-10%
Palmer	2,225	2,157	2,091	-6%	-3%
Petersburg	60	57	62	3%	9%
Prince of Wales	79	98	110	39%	12%
Sand Point	31	18	18	-42%	0%
Seward	139	103	120	-14%	17%
Sitka	213	242	231	8%	-5%
Skagway	3	1	1	N/S	N/S
St. Mary's ²	50	51	71	42%	39%
St. Paul	12	7	7	N/S	N/S
Tok	39	40	29	-26%	-27%
Unalakleet	57	80	47	-18%	-41%
Unalaska	46	42	40	-13%	-5%
Utgavik	312	291	265	-15%	-9%
Valdez	67	42	67	0%	60%
Wrangell	57	47	30	-47%	-36%
Yakutat	2	1	4	N/S	N/S
Total	22,643	21,805	19,723	-13%	-10%
1st District	2,175	2,130	1,849	-15%	-13%
2nd District	1,125	1,042	960	-15%	-8%
3rd District	15,559	15,169	13,390	-14%	-12%
4th District	3,784	3,464	3,524	-7%	2%

N/S: Numbers 10 or less are not compared statistically.

1. Kake court closed in October 2018.

2. St. Mary's court closed in 2016. Records for filings from the venue are still maintained separately.

**Figure 4.01. Superior Court Filing and Disposition Trends
FY 18 – FY 20**

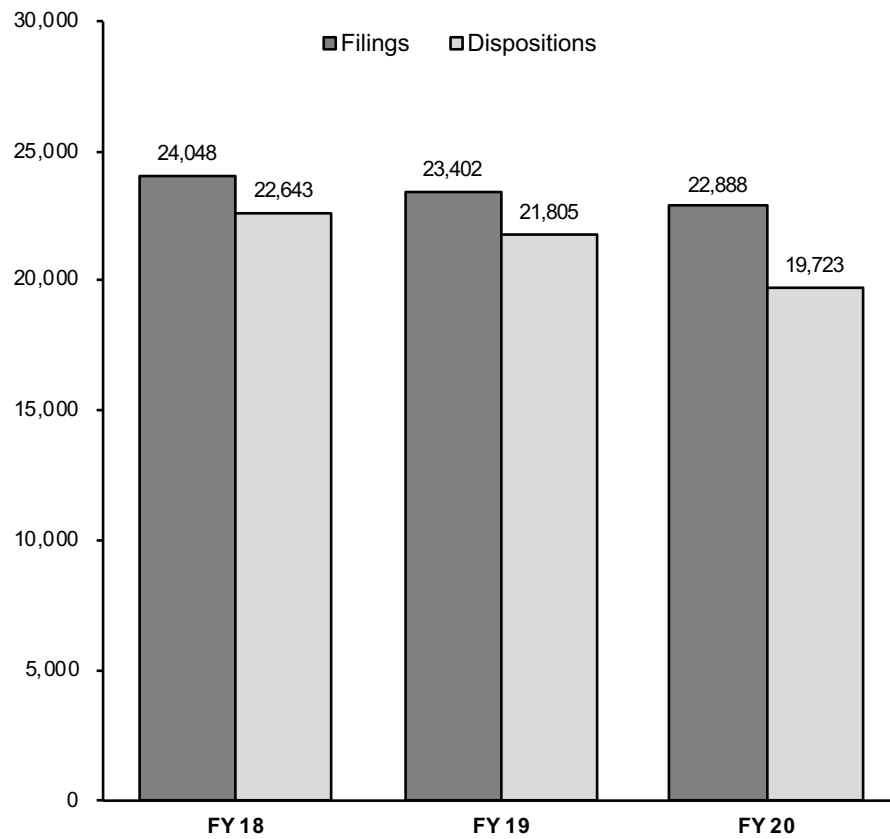


Table 4.03. Superior Court Clearance Rates
FY 19 – FY 20

Court	Filings		Dispositions		Clearance rates	
	FY 20	Change from	FY 20	Change from	FY 19	FY 20
		FY 19		FY 19		
Anchorage	10,480	-5%	9,120	-15%	98%	87%
Angoon	1	N/S	2	N/S	N/S	N/S
Aniak	64	0%	47	-6%	78%	73%
Bethel	825	7%	704	4%	88%	85%
Cordova	25	-11%	32	10%	104%	128%
Delta Junction	39	-17%	40	18%	72%	103%
Dillingham	272	14%	178	-7%	80%	65%
Emmonak	104	-1%	75	-7%	77%	72%
Fairbanks	2,645	-4%	2,437	2%	87%	92%
Fort Yukon	23	-12%	20	25%	62%	87%
Galena	18	-25%	21	-9%	96%	117%
Glennallen	52	-21%	49	-11%	83%	94%
Haines	5	N/S	6	N/S	N/S	N/S
Homer	314	5%	245	-23%	107%	78%
Hoonah	7	N/S	3	N/S	N/S	N/S
Hooper Bay	53	10%	32	-46%	123%	60%
Juneau	1,072	-7%	890	-19%	95%	83%
Kake ¹	Served by Petersburg					
Kenai	1,320	-7%	1,096	-1%	77%	83%
Ketchikan	507	-13%	510	-12%	100%	101%
Kodiak	361	16%	278	1%	88%	77%
Kotzebue	371	-16%	355	3%	79%	96%
Naknek	65	10%	49	-20%	103%	75%
Nenana	42	-18%	48	14%	82%	114%
Nome	375	4%	293	-10%	90%	78%
Palmer	2,523	8%	2,091	-3%	92%	83%
Petersburg	63	0%	62	9%	91%	98%
Prince of Wales	140	49%	110	12%	104%	79%
Sand Point	26	30%	18	0%	90%	69%
Seward	146	4%	120	17%	73%	82%
Sitka	245	-2%	231	-5%	97%	94%
Skagway	1	N/S	1	N/S	N/S	N/S
St. Mary's ²	88	42%	71	39%	82%	81%
St. Paul	7	N/S	7	N/S	N/S	N/S
Tok	39	-17%	29	-27%	85%	74%
Unalakleet	69	-9%	47	-41%	105%	68%
Unalaska	48	0%	40	-5%	88%	83%
Utqiagvik	323	9%	265	-9%	98%	82%
Valdez	84	42%	67	60%	71%	80%
Wrangell	44	-10%	30	-36%	96%	68%
Yakutat	2	N/S	4	N/S	N/S	N/S
Total	22,888	-2%	19,723	-10%	93%	86%
1st District	2,087	-5%	1,849	-13%	97%	89%
2nd District	1,138	-3%	960	-8%	89%	84%
3rd District	15,723	-2%	13,390	-12%	95%	85%
4th District	3,940	-2%	3,524	2%	87%	89%

Clearance rate measures whether a court is keeping up with its incoming caseload. Courts aspire to clear (i.e., dispose of) at least as many cases as have been filed in a period by having a clearance rate of 100 percent or higher.

N/S: Numbers 10 or less are not compared statistically.

1. Kake court closed in October 2018.

2. St. Mary's court closed in 2016. Records for filings from the venue are still maintained separately.

**Table 4.04. Superior Court Filings by Case Type
FY 20**

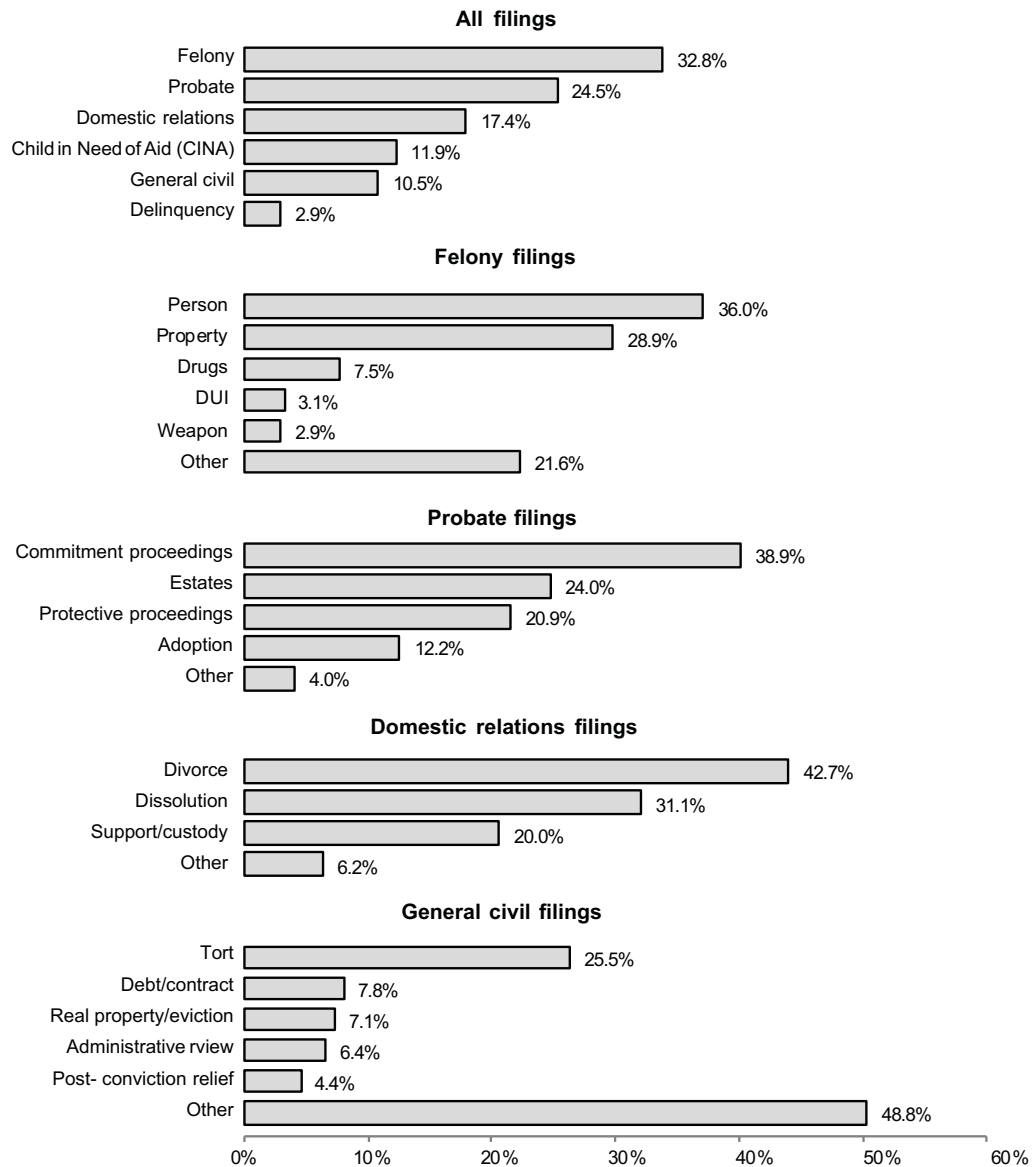
Court	Felony	CINA	Delinquency	Domestic relations	General civil	Probate	Total
Anchorage	3,337	1,043	282	1,780	1,229	2,809	10,480
Angoon	1	0	0	0	0	0	1
Aniak	52	6	6	0	0	0	64
Bethel	285	148	19	105	72	196	825
Cordova	6	0	0	7	7	5	25
Delta Junction	18	0	0	16	2	3	39
Dillingham	129	51	10	23	13	46	272
Emmonak	81	18	4	1	0	0	104
Fairbanks	776	381	34	588	276	590	2,645
Fort Yukon	22	0	0	1	0	0	23
Galena	15	0	1	0	1	1	18
Glennallen	18	14	3	7	5	5	52
Haines	5	0	0	0	0	0	5
Homer	118	17	12	56	34	77	314
Hoonah	7	0	0	0	0	0	7
Hooper Bay	39	0	14	0	0	0	53
Juneau	288	84	26	178	125	371	1,072
Kake ¹	Served by Petersburg						
Kenai	500	144	56	218	118	284	1,320
Ketchikan	124	32	15	90	35	211	507
Kodiak	139	47	16	61	31	67	361
Kotzebue	169	62	12	46	28	54	371
Naknek	39	12	0	6	4	4	65
Nenana	34	0	0	7	1	0	42
Nome	149	78	25	40	22	61	375
Palmer	588	426	98	543	285	583	2,523
Petersburg	18	3	0	17	9	16	63
Prince of Wales	54	38	0	22	9	17	140
Sand Point	21	0	0	0	2	3	26
Seward	81	10	5	20	10	20	146
Sitka	61	29	6	42	32	75	245
Skagway	1	0	0	0	0	0	1
St. Mary's ²	75	6	7	0	0	0	88
St. Paul	7	0	0	0	0	0	7
Tok	29	0	1	7	2	0	39
Unalakleet	67	0	0	0	0	2	69
Unalaska	20	0	1	15	7	5	48
Utqiagvik	93	58	11	60	31	70	323
Valdez	25	5	1	24	14	15	84
Wrangell	11	2	0	14	3	14	44
Yakutat	2	0	0	0	0	0	2
Total	7,504	2,714	665	3,994	2,407	5,604	22,888
% of total	32.8	11.9	2.9	17.4	10.5	24.5	100.0
1st District	572	188	47	363	213	704	2,087
2nd District	478	198	48	146	81	187	1,138
3rd District	5,028	1,769	484	2,760	1,759	3,923	15,723
4th District	1,426	559	86	725	354	790	3,940

1. Kake court closed in October 2018.

2. St. Mary's court closed in 2016. Records for filings from the venue are still maintained separately.

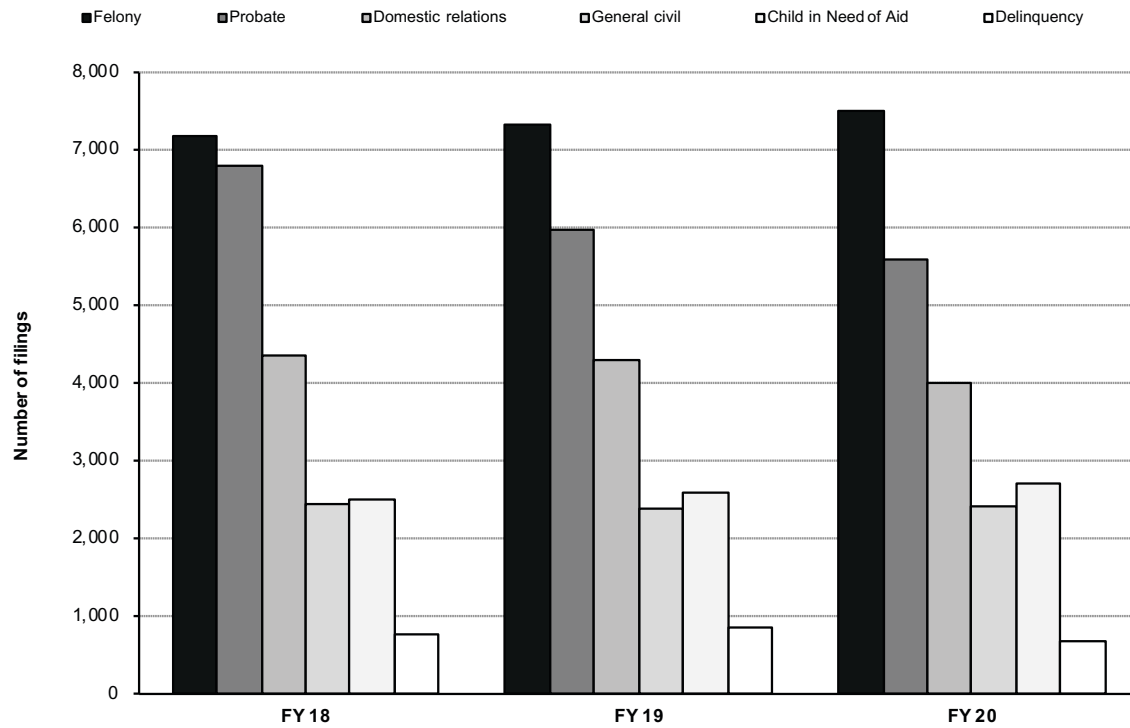
**Figure 4.02. Composition of Superior Court Filings
FY 20**

Percentages within categories.



This chart analyzes the types of cases filed in Superior Court during FY20. Felony case filings are the major case filing type, comprising 32.8% of total case filings. Probate cases are second with 24.5% of the filings.

**Figure 4.03. Superior Court Filing Trends by Case Type
FY 18 – FY 20**



Filing Type	FY 18	FY 19	FY 20	FY 18 to FY 20 change	FY 19 to FY 20 change
Felony	7,186	7,321	7,504	4%	2%
Probate	6,801	5,965	5,604	-18%	-6%
Domestic relations	4,365	4,301	3,994	-8%	-7%
General civil	2,452	2,385	2,407	-2%	1%
Child in Need of Aid	2,494	2,581	2,714	9%	5%
Delinquency	750	849	665	-11%	-22%
Total	24,048	23,402	22,888	-5%	-2%

**Table 4.05. Superior Court Dispositions by Case Type
FY 20**

Court	Felony	CINA	Delinquency	Domestic relations	General civil	Probate	Total
Anchorage	2,710	957	340	1,655	1,161	2,297	9,120
Angoon	2	0	0	0	0	0	2
Aniak	39	1	7	0	0	0	47
Bethel	262	100	30	82	60	170	704
Cordova	10	0	0	6	7	9	32
Delta Junction	15	0	0	17	3	5	40
Dillingham	86	26	5	20	13	28	178
Emmonak	55	9	11	0	0	0	75
Fairbanks	710	309	44	570	248	556	2,437
Fort Yukon	19	0	0	1	0	0	20
Galena	17	0	3	0	1	0	21
Glennallen	11	16	3	7	7	5	49
Haines	6	0	0	0	0	0	6
Homer	103	11	5	46	29	51	245
Hoonah	3	0	0	0	0	0	3
Hooper Bay	26	1	5	0	0	0	32
Juneau	204	59	26	160	103	338	890
Kake ¹	Served by Petersburg						
Kenai	406	120	35	193	131	211	1,096
Ketchikan	141	28	13	95	39	194	510
Kodiak	102	22	9	51	36	58	278
Kotzebue	165	59	16	52	24	39	355
Naknek	29	8	2	3	2	5	49
Nenana	41	0	0	4	3	0	48
Nome	114	60	27	29	13	50	293
Palmer	432	356	106	517	231	449	2,091
Petersburg	19	0	0	15	12	16	62
Prince of Wales	61	3	0	23	8	15	110
Sand Point	15	0	0	0	1	2	18
Seward	62	6	1	17	9	25	120
Sitka	50	22	7	50	32	70	231
Skagway	1	0	0	0	0	0	1
St. Mary's ²	58	5	8	0	0	0	71
St. Paul	5	1	0	1	0	0	7
Tok	20	0	0	9	0	0	29
Unalakleet	45	0	0	0	0	2	47
Unalaska	16	0	1	9	11	3	40
Utqiagvik	103	52	11	23	22	54	265
Valdez	22	1	5	20	15	4	67
Wrangell	7	1	0	10	2	10	30
Yakutat	4	0	0	0	0	0	4
Total	6,196	2,233	720	3,685	2,223	4,666	19,723
% of total	31.4	11.3	3.7	18.7	11.3	23.6	100.0
1st District	498	113	46	353	196	643	1,849
2nd District	427	171	54	104	59	145	960
3rd District	4,009	1,524	512	2,545	1,653	3,147	13,390
4th District	1,262	425	108	683	315	731	3,524

1. Kake court closed in October 2018.

2. St. Mary's court closed in 2016. Records for filings from the venue are still maintained separately.

**Table 4.06. Felony Case Filings
FY 18 – FY 20**

Court	FY 18	FY 19	FY 20	Change	
				FY 18 to FY 20	FY 19 to FY 20
Anchorage	3,389	3,356	3,337	-2%	-1%
Angoon	0	2	1	N/S	N/S
Aniak	46	59	52	13%	-12%
Bethel	253	294	285	13%	-3%
Cordova	5	9	6	N/S	N/S
Delta Junction	14	10	18	29%	N/S
Dillingham	74	114	129	74%	13%
Emmonak	52	73	81	56%	11%
Fairbanks	734	716	776	6%	8%
Fort Yukon	26	22	22	-15%	0%
Galena	13	22	15	15%	-32%
Glennallen	20	25	18	-10%	-28%
Haines	6	6	5	N/S	N/S
Homer	99	103	118	19%	15%
Hoonah	3	2	7	N/S	N/S
Hooper Bay	41	36	39	-5%	8%
Juneau	213	230	288	35%	25%
Kake ¹	3	0	Served by Petersburg	N/S	N/S
Kenai	395	482	500	27%	4%
Ketchikan	165	143	124	-25%	-13%
Kodiak	93	116	139	49%	20%
Kotzebue	286	236	169	-41%	-28%
Naknek	25	37	39	56%	5%
Nenana	41	43	34	-17%	-21%
Nome	107	123	149	39%	21%
Palmer	517	538	588	14%	9%
Petersburg	18	20	18	0%	-10%
Prince of Wales	45	46	54	20%	17%
Sand Point	22	16	21	-5%	31%
Seward	63	65	81	29%	25%
Sitka	86	61	61	-29%	0%
Skagway	2	1	1	N/S	N/S
St. Mary's ²	45	47	75	67%	60%
St. Paul	5	8	7	N/S	N/S
Tok	25	24	29	16%	21%
Unalakleet	71	76	67	-6%	-12%
Unalaska	35	28	20	-43%	-29%
Utqiagvik	119	97	93	-22%	-4%
Valdez	15	12	25	67%	108%
Wrangell	15	18	11	-27%	-39%
Yakutat	0	5	2	N/S	N/S
Total	7,186	7,321	7,504	4%	2%
1st District	556	534	572	3%	7%
2nd District	583	532	478	-18%	-10%
3rd District	4,757	4,909	5,028	6%	2%
4th District	1,290	1,346	1,426	11%	6%

N/S: Numbers 10 or less are not compared statistically.

1. Kake court closed in October 2018.

2. St. Mary's court closed in 2016. Records for filings from the venue are still maintained separately.

**Table 4.07. Felony Filings by Case Type
FY 20**

Court	Person	Property	Drugs	Weapon	Public order	DUI	Reckless driving	Motor vehicle — other	Protective order violation	Fish & Game	Other	Total
Anchorage	1,085	975	193	93	20	110	0	75	1	0	785	3,337
Angoon	1	0	0	0	0	0	0	0	0	0	0	1
Aniak	35	11	0	2	0	0	0	0	0	0	4	52
Bethel	196	56	2	3	5	4	0	2	0	0	17	285
Cordova	3	2	1	0	0	0	0	0	0	0	0	6
Delta Junction	7	7	0	0	0	2	0	0	0	0	2	18
Dillingham	72	38	3	2	4	3	0	0	0	0	7	129
Emmonak	51	9	0	1	4	6	0	0	0	0	10	81
Fairbanks	240	206	34	25	4	25	0	35	0	0	207	776
Fort Yukon	7	13	0	1	0	0	0	0	0	0	1	22
Galena	12	2	0	0	0	0	0	0	0	0	1	15
Glennallen	9	5	0	1	0	1	0	0	0	0	2	18
Haines	3	0	0	0	0	1	0	0	0	0	1	5
Homer	38	48	8	2	2	5	0	3	0	0	12	118
Hoonah	5	1	0	0	1	0	0	0	0	0	0	7
Hooper Bay	30	3	0	0	0	1	0	0	0	0	5	39
Juneau	90	90	35	5	2	6	0	11	1	0	48	288
Kake ¹	Served by Petersburg											
Kenai	85	175	120	10	4	12	0	12	0	0	82	500
Ketchikan	41	46	22	2	0	2	0	3	0	0	8	124
Kodiak	38	41	30	4	1	2	0	7	0	0	16	139
Kotzebue	97	45	3	2	17	1	0	0	0	0	4	169
Naknek	18	16	2	1	0	1	0	0	0	0	1	39
Nenana	12	7	3	1	1	1	0	0	0	0	9	34
Nome	93	33	1	1	5	3	0	1	0	0	12	149
Palmer	172	210	58	41	4	31	0	38	0	0	34	588
Petersburg	5	5	4	1	0	1	0	2	0	0	0	18
Prince of Wales	13	23	6	3	0	3	0	0	0	0	6	54
Sand Point	9	8	1	0	0	2	0	0	0	0	1	21
Seward	19	10	8	2	17	4	0	1	0	0	20	81
Sitka	17	19	14	1	1	2	0	0	0	0	7	61
Skagway	1	0	0	0	0	0	0	0	0	0	0	1
St. Mary's ²	50	14	0	2	2	0	0	0	0	0	7	75
St. Paul	5	1	0	1	0	0	0	0	0	0	0	7
Tok	21	6	0	1	0	1	0	0	0	0	0	29
Unalakleet	49	12	0	1	1	0	0	0	0	0	4	67
Unalaska	9	4	1	1	0	2	0	0	0	0	3	20
Utqiagvik	48	19	3	4	2	2	0	1	0	0	14	93
Valdez	6	3	13	0	1	1	0	0	0	0	1	25
Wrangell	4	5	0	1	0	1	0	0	0	0	0	11
Yakutat	2	0	0	0	0	0	0	0	0	0	0	2
Total	2,698	2,168	565	215	98	236	0	191	2	0	1,331	7,504
% of total	36.0	28.9	7.5	2.9	1.3	3.1	0.0	2.6	0.0	0.0	17.7	100.0
1st District	182	189	81	13	4	16	0	16	1	0	70	572
2nd District	287	109	7	8	25	6	0	2	0	0	34	478
3rd District	1,568	1,536	438	158	53	174	0	136	1	0	964	5,028
4th District	661	334	39	36	16	40	0	37	0	0	263	1,426

1. Kake court closed in October 2018.

2. St. Mary's court closed in 2016. Records for filings from the venue are still maintained separately.

**Table 4.08. Criminal Case Types
FY 20**

Person	Public Order
Homicide	Riot
Assault	Disorderly Conduct
Reckless Endangerment	Harassment
Kidnapping	Indecent Viewing or Photography
Custodial Interference	Possess or Distribute Child Pornography
Human Trafficking	Cruelty to Animals
Sex Offenses	Recruiting Gang Members
Robbery	Gambling
Extortion	Alcohol Licensing Laws
Coercion	
Property	Motor Vehicle DUI
Theft	Motor Vehicle Reckless Driving
Burglary	Motor Vehicle Other
Criminal Trespass	Protection Order Violation
Vehicle Theft	Fish and Game
Arson	Other
Criminal Mischief	Offenses against Public Administration
Business and Commercial Offenses	Offenses against Family and Vulnerable Adults
Drugs	All other offenses, including cases in which a charging document was never filed
Misconduct Involving a Controlled Substance	
Manufacture, Delivery or Possession of Imitation Controlled Substance	
Weapons	
Misconduct Involving Weapons	
Criminal Possession of Explosives	
Unlawful Furnishing of Explosives	

Criminal cases typically contain multiple charges. The Alaska Court System categorizes cases for reporting purposes based on the most serious charge.

In FY07 the Alaska Court System changed the way it categorizes criminal cases for annual reporting. The categories now conform to the National Center for State Courts' national model for caseload statistical reporting. This change is intended to make Alaska statistics easier to compile, understand, and compare to those of other jurisdictions.

**Table 4.09. Felony Case Dispositions
FY 18 – FY 20**

Court	FY 18	FY 19	FY 20	Change	
				FY 18 to FY 20	FY 19 to FY 20
Anchorage	2,914	3,213	2,710	-7%	-16%
Angoon	0	0	2	N/S	N/S
Aniak	47	47	39	-17%	-17%
Bethel	219	224	262	20%	17%
Cordova	5	7	10	N/S	N/S
Delta Junction	16	11	15	-6%	36%
Dillingham	70	81	86	23%	6%
Emmonak	41	57	55	34%	-4%
Fairbanks	659	651	710	8%	9%
Fort Yukon	22	12	19	-14%	58%
Galena	13	20	17	31%	-15%
Glennallen	20	19	11	-45%	-42%
Haines	5	6	6	N/S	N/S
Homer	86	92	103	20%	12%
Hoonah	1	4	3	N/S	N/S
Hooper Bay	34	34	26	-24%	-24%
Juneau	141	212	204	45%	-4%
Kake ¹	3	0	Served by Petersburg	N/S	N/S
Kenai	361	342	406	12%	19%
Ketchikan	118	170	141	19%	-17%
Kodiak	78	105	102	31%	-3%
Kotzebue	232	181	165	-29%	-9%
Naknek	30	30	29	-3%	-3%
Nenana	24	40	41	71%	3%
Nome	133	99	114	-14%	15%
Palmer	434	490	432	0%	-12%
Petersburg	12	18	19	58%	6%
Prince of Wales	37	45	61	65%	36%
Sand Point	22	10	15	-32%	N/S
Seward	55	43	62	13%	44%
Sitka	50	74	50	0%	-32%
Skagway	3	1	1	N/S	N/S
St. Mary's ²	33	30	58	76%	93%
St. Paul	6	6	5	N/S	N/S
Tok	25	23	20	-20%	-13%
Unalakleet	57	80	45	-21%	-44%
Unalaska	34	30	16	-53%	-47%
Utgavik	76	91	103	36%	13%
Valdez	9	13	22	N/S	69%
Wrangell	13	15	7	N/S	N/S
Yakutat	2	0	4	N/S	N/S
Total	6,140	6,626	6,196	1%	-6%
1st District	385	545	498	29%	-9%
2nd District	532	485	453	-15%	-7%
3rd District	4,124	4,481	4,009	-3%	-11%
4th District	1,099	1,115	1,236	12%	11%

N/S: Numbers 10 or less are not compared statistically.

1. Kake court closed in October 2018.

2. St. Mary's court closed in 2016. Records for filings from the venue are still maintained separately.

**Table 4.10. Felony Case Dispositions by Manner of Disposition
FY 20**

Court	Cases disposed in District Court ¹						Cases disposed in Superior Court						Total
	Non-trial			Trial		Subtotal	Non-trial			Trial		Subtotal	
	Case dismissed	Guilty plea	Other	Guilty	Not guilty		Case dismissed	Guilty plea	Other	Guilty	Not guilty		
Anchorage	1,087	656	3	0	0	1,746	131	757	3	60	13	964	2,710
Angoon	0	0	0	0	0	0	1	1	0	0	0	2	2
Aniak	8	4	0	0	0	12	4	23	0	0	0	27	39
Bethel	31	36	1	0	0	68	32	156	1	3	2	194	262
Cordova	4	2	0	0	0	6	0	4	0	0	0	4	10
Delta Junction	3	2	0	0	0	5	2	8	0	0	0	10	15
Dillingham	33	28	0	0	0	61	3	18	1	3	0	25	86
Emmonak	7	9	1	0	0	17	5	29	1	3	0	38	55
Fairbanks	90	114	4	0	2	210	109	374	0	13	4	500	710
Fort Yukon	4	2	0	0	0	6	0	13	0	0	0	13	19
Galena	1	1	1	0	0	3	4	9	0	1	0	14	17
Glennallen	0	6	0	0	0	6	1	3	0	1	0	5	11
Haines	0	1	0	0	0	1	0	4	1	0	0	5	6
Homer	15	29	0	0	0	44	7	50	0	0	2	59	103
Hoonah	0	1	0	0	0	1	1	1	0	0	0	2	3
Hooper Bay	4	4	0	0	0	8	1	17	0	0	0	18	26
Juneau	21	25	1	0	0	47	20	131	0	5	1	157	204
Kake ²	Served by Petersburg												
Kenai	48	108	0	0	0	156	49	192	0	7	2	250	406
Ketchikan	29	20	0	0	0	49	17	73	0	2	0	92	141
Kodiak	8	27	0	0	0	35	8	58	0	1	0	67	102
Kotzebue	37	74	1	0	0	112	7	44	0	2	0	53	165
Naknek	5	14	0	0	0	19	2	7	0	1	0	10	29
Nenana	8	2	0	0	0	10	3	26	0	2	0	31	41
Nome	25	45	0	0	0	70	6	37	0	1	0	44	114
Palmer	40	91	0	0	0	131	32	262	0	6	1	301	432
Petersburg	2	5	0	0	0	7	1	10	0	1	0	12	19
Prince of Wales	15	7	0	0	0	22	4	29	0	6	0	39	61
Sand Point	4	6	0	0	0	10	0	5	0	0	0	5	15
Seward	8	28	0	0	0	36	4	22	0	0	0	26	62
Sitka	5	1	0	0	0	6	14	25	1	4	0	44	50
Skagway	0	0	0	0	0	0	0	1	0	0	0	1	1
St. Mary's ³	5	12	0	0	0	17	7	34	0	0	0	41	58
St. Paul	3	1	0	0	0	4	0	1	0	0	0	1	5
Tok	0	6	1	0	0	7	1	11	0	1	0	13	20
Unalakleet	6	29	0	0	0	35	4	6	0	0	0	10	45
Unalaska	2	8	0	0	0	10	2	4	0	0	0	6	16
Utqiagvik	23	23	1	0	0	47	20	34	1	1	0	56	103
Valdez	3	6	0	0	0	9	2	11	0	0	0	13	22
Wrangell	0	1	0	0	0	1	1	5	0	0	0	6	7
Yakutat	0	0	0	0	0	0	0	4	0	0	0	4	4
Total	1,584	1,434	14	0	2	3,034	505	2,499	9	124	25	3,162	6,196
% of total	25.6	23.1	0.2	0.0	0.1	49.0	8.2	40.3	0.1	2.0	0.4	51.0	100.0
1st District	72	61	1	0	0	134	59	284	2	18	1	364	498
2nd District	91	171	2	0	0	264	37	121	1	4	0	163	427
3rd District	1,260	1,010	3	0	0	2,273	241	1,394	4	79	18	1,736	4,009
4th District	161	192	8	0	2	363	168	700	2	23	6	899	1,262

Note: Due to the covid pandemic, jury trials in criminal and civil cases were suspended by order of the Supreme Court, March 16 – June 30, 2020.

1. All felony charges were either reduced to misdemeanors or dismissed while these cases were still in District Court. Convictions in these cases were for misdemeanors only.

2. Kake court closed in October 2018.

3. St. Mary's court closed in 2016. Records for filings from the venue are still maintained separately.

**Table 4.11. Post-judgment Filings: Felony Petitions to Revoke Probation
FY 18 – FY 20**

Court	FY 18	FY 19	FY 20	Change	
				FY 18 to FY 20	FY 19 to FY 20
Anchorage	1,806	1,460	1,080	-40%	-26%
Angoon	9	3	3	N/S	N/S
Aniak	25	30	21	-16%	-30%
Bethel	183	147	180	-2%	22%
Cordova	4	2	0	N/S	N/S
Delta Junction	5	1	3	N/S	N/S
Dillingham	26	19	22	-15%	16%
Emmonak	38	26	39	3%	50%
Fairbanks	511	460	329	-36%	-28%
Fort Yukon	1	4	9	N/S	N/S
Galena	5	11	5	N/S	N/S
Glennallen	4	10	2	N/S	N/S
Haines	4	3	1	N/S	N/S
Homer	98	96	39	-60%	-59%
Hoonah	1	2	1	N/S	N/S
Hooper Bay	26	40	14	-46%	-65%
Juneau	232	193	103	-56%	-47%
Kake ¹	0	0	Served by Petersburg	N/S	N/S
Kenai	522	403	256	-51%	-36%
Ketchikan	213	240	208	-2%	-13%
Kodiak	84	68	78	-7%	15%
Kotzebue	117	120	91	-22%	-24%
Naknek	19	24	12	-37%	-50%
Nenana	6	9	11	N/S	N/S
Nome	104	69	66	-37%	-4%
Palmer	607	460	296	-51%	-36%
Petersburg	8	5	6	N/S	N/S
Prince of Wales	36	28	65	81%	132%
Sand Point	20	7	2	N/S	N/S
Seward	37	25	33	-11%	32%
Sitka	51	41	17	-67%	-59%
Skagway	0	1	0	N/S	N/S
St. Mary's ²	39	14	28	-28%	100%
St. Paul	0	1	2	N/S	N/S
Tok	12	11	5	N/S	N/S
Unalakleet	23	26	15	-35%	-42%
Unalaska	11	6	8	N/S	N/S
Utgiaqvik	47	38	24	-49%	-37%
Valdez	8	6	4	N/S	N/S
Wrangell	8	5	6	N/S	N/S
Yakutat	1	1	0	N/S	N/S
Total	4,951	4,115	3,084	-38%	-25%
1st District	563	522	410	-27%	-21%
2nd District	291	253	196	-33%	-23%
3rd District	3,246	2,587	1,834	-43%	-29%
4th District	851	753	644	-24%	-14%

N/S: Numbers 10 or less are not compared statistically.

1. Kake court closed in October 2018.

2. St. Mary's court closed in 2016. Records for filings from the venue are still maintained separately.

**Table 4.12. Probate Case Filings
FY 18 – FY 20**

Court	FY 18	FY 19	FY 20	Change	
				FY 18 to FY 20	FY 19 to FY 20
Anchorage	3,518	2,910	2,809	-20%	-3%
Angoon	0	0	0	N/S	N/S
Aniak	0	0	0	N/S	N/S
Bethel	241	237	196	-19%	-17%
Cordova	12	9	5	N/S	N/S
Delta Junction	2	13	3	N/S	N/S
Dillingham	43	35	46	7%	31%
Emmonak	0	0	0	N/S	N/S
Fairbanks	723	683	590	-18%	-14%
Fort Yukon	0	0	0	N/S	N/S
Galena	0	0	1	N/S	N/S
Glennallen	6	9	5	N/S	N/S
Haines	0	0	0	N/S	N/S
Homer	82	80	77	-6%	-4%
Hoonah	0	0	0	N/S	N/S
Hooper Bay	0	0	0	N/S	N/S
Juneau	605	484	371	-39%	-23%
Kake ¹	0	0	Served by Petersburg	N/S	N/S
Kenai	330	348	284	-14%	-18%
Ketchikan	250	225	211	-16%	-6%
Kodiak	66	58	67	2%	16%
Kotzebue	42	51	54	29%	6%
Naknek	4	9	4	N/S	N/S
Nenana	0	0	0	N/S	N/S
Nome	81	88	61	-25%	-31%
Palmer	526	508	583	11%	15%
Petersburg	25	18	16	-36%	-11%
Prince of Wales	16	16	17	6%	6%
Sand Point	1	2	3	N/S	N/S
Seward	29	28	20	-31%	-29%
Sitka	80	69	75	-6%	9%
Skagway	0	0	0	N/S	N/S
St. Mary's ²	0	0	0	N/S	N/S
St. Paul	2	0	0	N/S	N/S
Tok	3	2	0	N/S	N/S
Unalakleet	0	0	2	N/S	N/S
Unalaska	1	3	5	N/S	N/S
Utgavik	83	63	70	-16%	11%
Valdez	13	3	15	15%	N/S
Wrangell	17	14	14	-18%	0%
Yakutat	0	0	0	N/S	N/S
Total	6,801	5,965	5,604	-18%	-6%
1st District	993	826	704	-29%	-15%
2nd District	206	202	187	-9%	-7%
3rd District	4,633	4,002	3,923	-15%	-2%
4th District	969	935	790	-18%	-16%

N/S: Numbers 10 or less are not compared statistically.

1. Kake court closed in October 2018.

2. St. Mary's court closed in 2016. Records for filings from the venue are still maintained separately.

**Table 4.13. Probate Filings by Case Type
FY 20**

Court	Adoptions	Estates	Commitment proceedings	Protective proceedings¹	Minor proceedings²	Other	Total
Anchorage	281	590	1,244	555	116	23	2,809
Angoon	0	0	0	0	0	0	0
Aniak	0	0	0	0	0	0	0
Bethel	10	17	115	48	6	0	196
Cordova	1	2	1	1	0	0	5
Delta Junction	0	2	0	1	0	0	3
Dillingham	3	14	7	22	0	0	46
Emmonak	0	0	0	0	0	0	0
Fairbanks	96	171	172	128	19	4	590
Fort Yukon	0	0	0	0	0	0	0
Galena	0	1	0	0	0	0	1
Glennallen	0	0	3	2	0	0	5
Haines	0	0	0	0	0	0	0
Homer	5	34	13	24	0	1	77
Hoonah	0	0	0	0	0	0	0
Hooper Bay	0	0	0	0	0	0	0
Juneau	24	83	206	46	6	6	371
Kake ³	Served by Petersburg						
Kenai	53	104	38	83	5	1	284
Ketchikan	16	55	103	34	1	2	211
Kodiak	14	18	23	12	0	0	67
Kotzebue	10	3	28	9	3	1	54
Naknek	0	0	3	1	0	0	4
Nenana	0	0	0	0	0	0	0
Nome	4	10	32	14	1	0	61
Palmer	143	158	126	134	21	1	583
Petersburg	1	8	3	4	0	0	16
Prince of Wales	1	6	8	2	0	0	17
Sand Point	0	0	2	1	0	0	3
Seward	4	5	3	7	0	1	20
Sitka	6	23	22	24	0	0	75
Skagway	0	0	0	0	0	0	0
St. Mary's ⁴	0	0	0	0	0	0	0
St. Paul	0	0	0	0	0	0	0
Tok	0	0	0	0	0	0	0
Unalakleet	0	0	2	0	0	0	2
Unalaska	2	2	0	0	1	0	5
Uqtiaqvik	8	23	23	13	3	0	70
Valdez	4	7	0	3	0	1	15
Wrangell	0	6	3	3	2	0	14
Yakutat	0	0	0	0	0	0	0
Total	686	1,342	2,180	1,171	184	41	5,604
% of total	12.2	24.0	38.9	20.9	3.3	0.7	100.0
1st District	48	181	345	113	9	8	704
2nd District	22	36	85	36	7	1	187
3rd District	510	934	1,463	845	143	28	3,923
4th District	106	191	287	177	25	4	790

1. Guardianships, conservatorships, etc.

2. Minor settlements, emancipations, etc.

3. Kake court closed in October 2018.

4. St. Mary's court closed in 2016. Records for filings from the venue are still maintained separately.

Table 4.14. Probate Case Dispositions
FY 18 – FY 20

Court	FY 18	FY 19	FY 20	Change	
				FY 18 to FY 20	FY 19 to FY 20
Anchorage	3,452	3,221	2,297	-33%	-29%
Angoon	0	0	0	N/S	N/S
Aniak	0	0	0	N/S	N/S
Bethel	213	231	170	-20%	-26%
Cordova	12	12	9	N/S	N/S
Delta Junction	3	0	5	N/S	N/S
Dillingham	34	35	28	-18%	-20%
Emmonak	0	0	0	N/S	N/S
Fairbanks	690	592	556	-19%	-6%
Fort Yukon	0	0	0	N/S	N/S
Galena	0	0	0	N/S	N/S
Glennallen	8	8	5	N/S	N/S
Haines	0	0	0	N/S	N/S
Homer	72	89	51	-29%	-43%
Hoonah	0	0	0	N/S	N/S
Hooper Bay	0	0	0	N/S	N/S
Juneau	575	480	338	-41%	-30%
Kake ¹	0	0	Served by Petersburg	N/S	N/S
Kenai	272	251	211	-22%	-16%
Ketchikan	227	200	194	-15%	-3%
Kodiak	55	50	58	5%	16%
Kotzebue	27	37	39	44%	5%
Naknek	4	10	5	N/S	N/S
Nenana	0	0	0	N/S	N/S
Nome	73	84	50	-32%	-40%
Palmer	503	391	449	-11%	15%
Petersburg	19	21	16	-16%	-24%
Prince of Wales	14	13	15	7%	15%
Sand Point	1	3	2	N/S	N/S
Seward	36	17	25	-31%	47%
Sitka	80	73	70	-12%	-4%
Skagway	0	0	0	N/S	N/S
St. Mary's ²	0	0	0	N/S	N/S
St. Paul	2	0	0	N/S	N/S
Tok	4	1	0	N/S	N/S
Unalakleet	0	0	2	N/S	N/S
Unalaska	0	2	3	N/S	N/S
Utgavik	78	49	54	-31%	10%
Valdez	12	5	4	N/S	N/S
Wrangell	20	13	10	N/S	N/S
Yakutat	0	0	0	N/S	N/S
Total	6,486	5,888	4,666	-28%	-21%
1st District	935	800	643	-31%	-20%
2nd District	178	170	145	-19%	-15%
3rd District	4,463	4,094	3,147	-29%	-23%
4th District	910	824	731	-20%	-11%

N/S: Numbers 10 or less are not compared statistically.

1. Kake court closed in October 2018.

2. St. Mary's court closed in 2016. Records for filings from the venue are still maintained separately.

**Table 4.15. Domestic Relations Case Filings
FY 18 – FY 20**

Court	FY 18	FY 19	FY 20	Change	
				FY 18 to FY 20	FY 19 to FY 20
Anchorage	2,013	1,997	1,780	-12%	-11%
Angoon	0	0	0	N/S	N/S
Aniak	0	0	0	N/S	N/S
Bethel	80	80	105	31%	31%
Cordova	8	5	7	N/S	N/S
Delta Junction	18	15	16	-11%	7%
Dillingham	25	23	23	-8%	0%
Emmonak	0	0	1	N/S	N/S
Fairbanks	662	682	588	-11%	-14%
Fort Yukon	0	0	1	N/S	N/S
Galena	0	0	0	N/S	N/S
Glennallen	8	11	7	N/S	N/S
Haines	0	0	0	N/S	N/S
Homer	55	60	56	2%	-7%
Hoonah	0	0	0	N/S	N/S
Hooper Bay	0	0	0	N/S	N/S
Juneau	182	170	178	-2%	5%
Kake ¹	0	0	Served by Petersburg	N/S	N/S
Kenai	236	232	218	-8%	-6%
Ketchikan	96	108	90	-6%	-17%
Kodiak	81	59	61	-25%	3%
Kotzebue	38	55	46	21%	-16%
Naknek	8	2	6	N/S	N/S
Nenana	4	6	7	N/S	N/S
Nome	40	32	40	0%	25%
Palmer	605	574	543	-10%	-5%
Petersburg	15	13	17	13%	31%
Prince of Wales	27	20	22	-19%	10%
Sand Point	1	0	0	N/S	N/S
Seward	21	16	20	-5%	25%
Sitka	43	43	42	-2%	-2%
Skagway	0	0	0	N/S	N/S
St. Mary's ²	0	0	0	N/S	N/S
St. Paul	1	1	0	N/S	N/S
Tok	13	15	7	N/S	N/S
Unalakleet	0	0	0	N/S	N/S
Unalaska	7	7	15	N/S	N/S
Utgavik	37	38	60	62%	58%
Valdez	25	25	24	-4%	-4%
Wrangell	16	12	14	-12%	17%
Yakutat	0	0	0	N/S	N/S
Total	4,365	4,301	3,994	-8%	-7%
1st District	379	366	363	-4%	-1%
2nd District	115	125	146	27%	17%
3rd District	3,094	3,012	2,760	-11%	-8%
4th District	777	798	725	-7%	-9%

N/S: Numbers 10 or less are not compared statistically.

1. Kake court closed in October 2018.

2. St. Mary's court closed in 2016. Records for filings from the venue are still maintained separately.

**Table 4.16. Domestic Relations Filings by Case Type
FY 20**

Court	Divorce	Dissolution	Support/ custody	Other	Total
Anchorage	758	580	365	77	1,780
Angoon	0	0	0	0	0
Aniak	0	0	0	0	0
Bethel	29	14	22	40	105
Cordova	0	3	4	0	7
Delta Junction	7	7	1	1	16
Dillingham	5	6	5	7	23
Emmonak	0	1	0	0	1
Fairbanks	314	150	99	25	588
Fort Yukon	1	0	0	0	1
Galena	0	0	0	0	0
Glennallen	1	2	1	3	7
Haines	0	0	0	0	0
Homer	21	23	9	3	56
Hoonah	0	0	0	0	0
Hooper Bay	0	0	0	0	0
Juneau	67	72	31	8	178
Kake ¹	Served by Petersburg				
Kenai	89	75	49	5	218
Ketchikan	34	28	24	4	90
Kodiak	24	23	13	1	61
Kotzebue	11	5	15	15	46
Naknek	1	1	2	2	6
Nenana	1	0	1	5	7
Nome	7	10	14	9	40
Palmer	259	173	88	23	543
Petersburg	9	4	4	0	17
Prince of Wales	10	7	5	0	22
Sand Point	0	0	0	0	0
Seward	6	7	5	2	20
Sitka	17	18	6	1	42
Skagway	0	0	0	0	0
St. Mary's ²	0	0	0	0	0
St. Paul	0	0	0	0	0
Tok	3	2	2	0	7
Unalakleet	0	0	0	0	0
Unalaska	4	7	4	0	15
Utqiagvik	20	6	19	15	60
Valdez	4	13	5	2	24
Wrangell	3	7	4	0	14
Yakutat	0	0	0	0	0
Total	1,705	1,244	797	248	3,994
% of total	42.7	31.1	20.0	6.2	100.0
1st District	140	136	74	13	363
2nd District	38	21	48	39	146
3rd District	1,172	913	550	125	2,760
4th District	355	174	125	71	725

1. Kake court closed in October 2018.

3. St. Mary's court closed in 2016. Records for filings from the venue are still maintained separately.

**Table 4.17. Domestic Relations Case Dispositions
FY 18 – FY 20**

Court	FY 18	FY 19	FY 20	Change	
				FY 18 to FY 20	FY 19 to FY 20
Anchorage	2,036	1,924	1,655	-19%	-14%
Angoon	0	0	0	N/S	N/S
Aniak	0	0	0	N/S	N/S
Bethel	76	79	82	8%	4%
Cordova	9	5	6	N/S	N/S
Delta Junction	13	17	17	31%	0%
Dillingham	27	20	20	-26%	0%
Emmonak	0	0	0	N/S	N/S
Fairbanks	670	603	570	-15%	-5%
Fort Yukon	0	0	1	N/S	N/S
Galena	0	0	0	N/S	N/S
Glennallen	14	12	7	N/S	N/S
Haines	0	0	0	N/S	N/S
Homer	68	60	46	-32%	-23%
Hoonah	0	0	0	N/S	N/S
Hooper Bay	0	0	0	N/S	N/S
Juneau	193	143	160	-17%	12%
Kake ¹	0	0	Served by Petersburg	N/S	N/S
Kenai	236	230	193	-18%	-16%
Ketchikan	78	116	95	22%	-18%
Kodiak	59	68	51	-14%	-25%
Kotzebue	50	42	52	4%	24%
Naknek	9	3	3	N/S	N/S
Nenana	6	2	4	N/S	N/S
Nome	42	29	29	-31%	0%
Palmer	578	578	517	-11%	-11%
Petersburg	19	8	15	-21%	N/S
Prince of Wales	17	26	23	35%	-12%
Sand Point	0	1	0	N/S	N/S
Seward	19	16	17	-11%	6%
Sitka	29	45	50	72%	11%
Skagway	0	0	0	N/S	N/S
St. Mary's ²	0	0	0	N/S	N/S
St. Paul	0	1	1	N/S	N/S
Tok	9	11	9	N/S	N/S
Unalakleet	0	0	0	N/S	N/S
Unalaska	9	3	9	N/S	N/S
Utqiagvik	39	41	23	-41%	-44%
Valdez	29	16	20	-31%	25%
Wrangell	16	12	10	N/S	N/S
Yakutat	0	0	0	N/S	N/S
Total	4,350	4,111	3,685	-15%	-10%
1st District	352	350	353	0%	1%
2nd District	131	112	104	-21%	-7%
3rd District	3,093	2,937	2,545	-18%	-13%
4th District	774	712	683	-12%	-4%

N/S: Numbers 10 or less are not compared statistically.

1. Kake court closed in October 2018.

2. St. Mary's court closed in 2016. Records for filings from the venue are still maintained separately.

**Table 4.18. Domestic Relations Case Dispositions by
Manner of Disposition
FY 20**

Court	Stage of disposition				Total
	Dismissed	Dissolution/ divorce hearing	Trial	Other	
Anchorage	327	978	192	158	1,655
Angoon	0	0	0	0	0
Aniak	0	0	0	0	0
Bethel	30	22	8	22	82
Cordova	0	5	0	1	6
Delta Junction	5	10	1	1	17
Dillingham	3	9	2	6	20
Emmonak	0	0	0	0	0
Fairbanks	78	290	175	27	570
Fort Yukon	0	0	1	0	1
Galena	0	0	0	0	0
Glennallen	1	4	0	2	7
Haines	0	0	0	0	0
Homer	7	33	3	3	46
Hoonah	0	0	0	0	0
Hooper Bay	0	0	0	0	0
Juneau	29	111	5	15	160
Kake ¹	Served by Petersburg				
Kenai	26	141	14	12	193
Ketchikan	14	46	31	4	95
Kodiak	6	38	4	3	51
Kotzebue	14	18	2	18	52
Naknek	0	2	0	1	3
Nenana	0	1	1	2	4
Nome	9	10	2	8	29
Palmer	61	345	65	46	517
Petersburg	3	11	1	0	15
Prince of Wales	5	14	2	2	23
Sand Point	0	0	0	0	0
Seward	3	10	2	2	17
Sitka	7	35	2	6	50
Skagway	0	0	0	0	0
St. Mary's ²	0	0	0	0	0
St. Paul	0	0	0	1	1
Tok	1	4	1	3	9
Unalakleet	0	0	0	0	0
Unalaska	1	7	0	1	9
Utgavik	4	11	2	6	23
Valdez	2	16	1	1	20
Wrangell	0	9	1	0	10
Yakutat	0	0	0	0	0
Total	636	2,180	518	351	3,685
% of total	17.3	59.2	14.0	9.5	100.0
1st District	58	226	42	27	353
2nd District	27	39	6	32	104
3rd District	437	1,588	283	237	2,545
4th District	114	327	187	55	683

Note: Due to the covid pandemic, jury trials in criminal and civil cases were suspended by order of the Supreme Court, March 16 – June 30, 2020.

1. Kake court closed in October 2018.

2. St. Mary's court closed in 2016. Records for filings from the venue are still maintained separately.

**Table 4.19. Post-judgment Filings: Motions to Modify
Custody, Support or Visitation
FY 18 – FY 20**

Court	FY 18	FY 19	FY 20	Change	
				FY 18 to FY 20	FY 19 to FY 20
Anchorage	684	617	490	-28%	-21%
Angoon	0	0	0	N/S	N/S
Aniak	0	0	0	N/S	N/S
Bethel	4	6	3	N/S	N/S
Cordova	1	3	3	N/S	N/S
Delta Junction	1	1	1	N/S	N/S
Dillingham	5	13	10	N/S	N/S
Emmonak	0	0	0	N/S	N/S
Fairbanks	191	143	143	-25%	0%
Fort Yukon	0	0	0	N/S	N/S
Galena	0	0	0	N/S	N/S
Glennallen	4	5	4	N/S	N/S
Haines	0	0	0	N/S	N/S
Homer	19	16	18	-5%	13%
Hoonah	0	0	0	N/S	N/S
Hooper Bay	0	0	0	N/S	N/S
Juneau	42	38	45	7%	18%
Kake ¹	0	0	Served by Petersburg	N/S	N/S
Kenai	85	102	82	-4%	-20%
Ketchikan	55	43	25	-55%	-42%
Kodiak	25	15	22	-12%	47%
Kotzebue	9	7	10	N/S	N/S
Naknek	2	1	3	N/S	N/S
Nenana	2	1	0	N/S	N/S
Nome	13	8	3	N/S	N/S
Palmer	193	224	201	4%	-10%
Petersburg	2	6	4	N/S	N/S
Prince of Wales	5	4	1	N/S	N/S
Sand Point	0	0	0	N/S	N/S
Seward	2	3	5	N/S	N/S
Sitka	9	13	7	N/S	N/S
Skagway	0	0	0	N/S	N/S
St. Mary's ²	0	0	1	N/S	N/S
St. Paul	0	0	0	N/S	N/S
Tok	0	0	3	N/S	N/S
Unalakleet	0	0	0	N/S	N/S
Unalaska	3	0	0	N/S	N/S
Utgavik	2	5	8	N/S	N/S
Valdez	8	11	12	N/S	9%
Wrangell	5	5	7	N/S	N/S
Yakutat	0	0	0	N/S	N/S
Total	1,371	1,290	1,111	-19%	-14%
1st District	118	109	89	-25%	-18%
2nd District	24	20	21	-12%	5%
3rd District	1,031	1,010	850	-18%	-16%
4th District	198	151	151	-24%	0%

N/S: Numbers 10 or less are not compared statistically.

1. Kake court closed in October 2018.

2. St. Mary's court closed in 2016. Records for filings from the venue are still maintained separately.

**Table 4.20. Superior Court General Civil Case Filings
FY 18 – FY 20**

Court	FY 18	FY 19	FY 20	Change	
				FY 18 to FY 20	FY 19 to FY 20
Anchorage	1,278	1,235	1,229	-4%	0%
Angoon	0	0	0	N/S	N/S
Aniak	0	0	0	N/S	N/S
Bethel	49	49	72	47%	47%
Cordova	2	3	7	N/S	N/S
Delta Junction	1	9	2	N/S	N/S
Dillingham	17	11	13	-24%	18%
Emmonak	0	0	0	N/S	N/S
Fairbanks	272	253	276	1%	9%
Fort Yukon	0	0	0	N/S	N/S
Galena	0	0	1	N/S	N/S
Glennallen	2	6	5	N/S	N/S
Haines	0	0	0	N/S	N/S
Homer	41	36	34	-17%	-6%
Hoonah	0	0	0	N/S	N/S
Hooper Bay	0	0	0	N/S	N/S
Juneau	146	137	125	-14%	-9%
Kake ¹	0	0	Served by Petersburg	N/S	N/S
Kenai	114	147	118	4%	-20%
Ketchikan	44	46	35	-20%	-24%
Kodiak	16	25	31	94%	24%
Kotzebue	17	13	28	65%	115%
Naknek	5	3	4	N/S	N/S
Nenana	4	2	1	N/S	N/S
Nome	23	22	22	-4%	0%
Palmer	271	269	285	5%	6%
Petersburg	7	7	9	N/S	N/S
Prince of Wales	7	1	9	N/S	N/S
Sand Point	3	0	2	N/S	N/S
Seward	14	5	10	N/S	N/S
Sitka	28	40	32	14%	-20%
Skagway	0	0	0	N/S	N/S
St. Mary's ²	0	0	0	N/S	N/S
St. Paul	0	0	0	N/S	N/S
Tok	1	5	2	N/S	N/S
Unalakleet	0	0	0	N/S	N/S
Unalaska	4	7	7	N/S	N/S
Utgavik	72	42	31	-57%	-26%
Valdez	8	7	14	N/S	N/S
Wrangell	6	4	3	N/S	N/S
Yakutat	0	1	0	N/S	N/S
Total	2,452	2,385	2,407	-2%	1%
1st District	238	236	213	-11%	-10%
2nd District	112	77	81	-28%	5%
3rd District	1,775	1,754	1,759	-1%	0%
4th District	327	318	354	8%	11%

N/S: Numbers 10 or less are not compared statistically.

1. Kake court closed in October 2018.

2. St. Mary's court closed in 2016. Records for filings from the venue are still maintained separately.

**Table 4.21. Superior Court General Civil Filings by Case Type
FY 20**

Court	Adminis- trative review	Debt/ contract	Tort	Real property/ eviction	Post- conviction relief	Other	Total
Anchorage	79	110	364	65	45	566	1,229
Angoon	0	0	0	0	0	0	0
Aniak	0	0	0	0	0	0	0
Bethel	2	3	17	0	7	43	72
Cordova	0	0	0	0	1	6	7
Delta Junction	0	0	0	1	0	1	2
Dillingham	1	1	1	1	2	7	13
Emmonak	0	0	0	0	0	0	0
Fairbanks	15	21	66	25	15	134	276
Fort Yukon	0	0	0	0	0	0	0
Galena	1	0	0	0	0	0	1
Glennallen	0	0	0	0	0	5	5
Haines	0	0	0	0	0	0	0
Homer	0	1	10	3	3	17	34
Hoonah	0	0	0	0	0	0	0
Hooper Bay	0	0	0	0	0	0	0
Juneau	21	7	32	11	8	46	125
Kake ¹	Served by Petersburg						
Kenai	6	10	27	11	3	61	118
Ketchikan	2	1	9	4	1	18	35
Kodiak	2	1	9	4	0	15	31
Kotzebue	1	0	6	1	4	16	28
Naknek	0	0	1	0	1	2	4
Nenana	0	1	0	0	0	0	1
Nome	0	2	2	7	2	9	22
Palmer	17	17	54	27	11	159	285
Petersburg	0	2	0	2	0	5	9
Prince of Wales	0	0	1	2	1	5	9
Sand Point	1	0	0	0	0	1	2
Seward	0	0	1	0	0	9	10
Sitka	3	5	5	2	1	16	32
Skagway	0	0	0	0	0	0	0
St. Mary's ²	0	0	0	0	0	0	0
St. Paul	0	0	0	0	0	0	0
Tok	0	0	0	0	0	2	2
Unalakleet	0	0	0	0	0	0	0
Unalaska	0	0	2	0	0	5	7
Utgavik	2	2	6	4	1	16	31
Valdez	0	3	1	1	1	8	14
Wrangell	0	0	0	0	0	3	3
Yakutat	0	0	0	0	0	0	0
Total	153	187	614	171	107	1,175	2,407
% of total	6.4	7.8	25.5	7.1	4.4	48.8	100.0
1st District	26	15	47	21	11	93	213
2nd District	3	4	14	12	7	41	81
3rd District	106	143	470	112	67	861	1,759
4th District	18	25	83	26	22	180	354

1. Kake court closed in October 2018.

2. St. Mary's court closed in 2016. Records for filings from the venue are still maintained separately.

**Table 4.22. Superior Court General Civil Case Types
FY 20**

Administrative Review	Eviction/Real Property
Administrative Appeal	Foreclosure
Appeal from District Court	Quiet Title
Petition for Review	Condemnation
	Forcible Entry and Detainer
	Real Estate Matter
Debt/Contract	Application for Post-conviction Relief
Debt — General	
Other Contract	
Tort	Other
Personal Injury — Auto	Change of Name
Personal Injury — Other	Election Contest or Recount Appeal
Wrongful Death	Injunctive Relief
Property Damage — Auto	Habeas Corpus
Property Damage — Other	Registration of Foreign Judgment
Medical Malpractice	Coroner
Legal Malpractice	Order to Show Cause
Other Malpractice	Contempt
	Other

**Table 4.23. Superior Court General Civil Case Dispositions
FY 18 – FY 20**

Court	FY 18	FY 19	FY 20	Change	
				FY 18 to FY 20	FY 19 to FY 20
Anchorage	1,286	1,239	1,161	-10%	-6%
Angoon	0	0	0	N/S	N/S
Aniak	0	0	0	N/S	N/S
Bethel	47	51	60	28%	18%
Cordova	2	0	7	N/S	N/S
Delta Junction	1	5	3	N/S	N/S
Dillingham	17	12	13	-24%	8%
Emmonak	0	0	0	N/S	N/S
Fairbanks	255	231	248	-3%	7%
Fort Yukon	0	0	0	N/S	N/S
Galena	0	0	1	N/S	N/S
Glennallen	2	4	7	N/S	N/S
Haines	0	0	0	N/S	N/S
Homer	48	31	29	-40%	-6%
Hoonah	0	0	0	N/S	N/S
Hooper Bay	0	0	0	N/S	N/S
Juneau	137	142	103	-25%	-27%
Kake ¹	0	0	Served by Petersburg	N/S	N/S
Kenai	106	111	131	24%	18%
Ketchikan	48	49	39	-19%	-20%
Kodiak	22	21	36	64%	71%
Kotzebue	15	10	24	60%	N/S
Naknek	5	5	2	N/S	N/S
Nenana	3	0	3	N/S	N/S
Nome	18	24	13	-28%	-46%
Palmer	243	258	231	-5%	-10%
Petersburg	6	5	12	N/S	N/S
Prince of Wales	8	4	8	N/S	N/S
Sand Point	3	1	1	N/S	N/S
Seward	13	5	9	N/S	N/S
Sitka	29	32	32	10%	0%
Skagway	0	0	0	N/S	N/S
St. Mary's ²	0	0	0	N/S	N/S
St. Paul	0	0	0	N/S	N/S
Tok	1	3	0	N/S	N/S
Unalakleet	0	0	0	N/S	N/S
Unalaska	2	5	11	N/S	N/S
Utgavik	75	54	22	-71%	-59%
Valdez	6	4	15	N/S	N/S
Wrangell	7	4	2	N/S	N/S
Yakutat	0	1	0	N/S	N/S
Total	2,405	2,311	2,223	-8%	-4%
1st District	235	237	196	-17%	-17%
2nd District	108	88	59	-45%	-33%
3rd District	1,755	1,696	1,653	-6%	-3%
4th District	307	290	315	3%	9%

N/S: Numbers 10 or less are not compared statistically.

1. Kake court closed in October 2018.

2. St. Mary's court closed in 2016. Records for filings from the venue are still maintained separately.

**Table 4.24. Superior Court General Civil Case Dispositions
by Manner of Disposition
FY 20**

Court	Stage of disposition						Total
	Dismiss/ settle	Default judgment	Summary judgment	Court trial	Jury trial	Other	
Anchorage	575	23	63	7	3	490	1,161
Angoon	0	0	0	0	0	0	0
Aniak	0	0	0	0	0	0	0
Bethel	27	0	1	1	0	31	60
Cordova	1	0	1	0	0	5	7
Delta Junction	2	0	0	0	0	1	3
Dillingham	6	0	1	0	0	6	13
Emmonak	0	0	0	0	0	0	0
Fairbanks	111	4	9	4	1	119	248
Fort Yukon	0	0	0	0	0	0	0
Galena	1	0	0	0	0	0	1
Glennallen	2	0	0	0	0	5	7
Haines	0	0	0	0	0	0	0
Homer	10	0	1	1	0	17	29
Hoonah	0	0	0	0	0	0	0
Hooper Bay	0	0	0	0	0	0	0
Juneau	46	1	10	0	0	46	103
Kake ¹	Served by Petersburg						
Kenai	64	1	3	1	0	62	131
Ketchikan	18	2	1	2	0	16	39
Kodiak	14	1	0	0	0	21	36
Kotzebue	10	0	1	0	0	13	24
Naknek	1	0	0	0	0	1	2
Nenana	2	0	0	0	0	1	3
Nome	1	2	0	2	0	8	13
Palmer	82	12	8	2	2	125	231
Petersburg	3	1	1	0	0	7	12
Prince of Wales	3	0	0	0	0	5	8
Sand Point	1	0	0	0	0	0	1
Seward	4	0	0	0	0	5	9
Sitka	8	2	5	0	0	17	32
Skagway	0	0	0	0	0	0	0
St. Mary's ²	0	0	0	0	0	0	0
St. Paul	0	0	0	0	0	0	0
Tok	0	0	0	0	0	0	0
Unalakleet	0	0	0	0	0	0	0
Unalaska	4	0	0	0	0	7	11
Utqiagvik	8	0	6	0	0	8	22
Valdez	1	1	4	0	0	9	15
Wrangell	1	0	1	0	0	0	2
Yakutat	0	0	0	0	0	0	0
Total	1,006	50	116	20	6	1,025	2,223
% of total	45.3	2.2	5.2	0.9	0.3	46.1	100.0
1st District	79	6	18	2	0	91	196
2nd District	19	2	7	2	0	29	59
3rd District	765	38	81	11	5	753	1,653
4th District	143	4	10	5	1	152	315

Note: Due to the covid pandemic, jury trials in criminal and civil cases were suspended by order of the Supreme Court, March 16 – June 30, 2020.

1. Kake court closed in October 2018.

2. St. Mary's court closed in 2016. Records for filings from the venue are still maintained separately.

**Table 4.25. CINA Case Filings
FY 18 – FY 20**

Court	FY 18	FY 19	FY 20	Change	
				FY 18 to FY 20	FY 19 to FY 20
Anchorage	967	1,086	1,043	8%	-4%
Angoon	0	0	0	N/S	N/S
Aniak	0	1	6	N/S	N/S
Bethel	106	75	148	40%	97%
Cordova	0	1	0	N/S	N/S
Delta Junction	0	0	0	N/S	N/S
Dillingham	34	47	51	50%	9%
Emmonak	17	15	18	6%	20%
Fairbanks	339	367	381	12%	4%
Fort Yukon	0	4	0	N/S	N/S
Galena	0	0	0	N/S	N/S
Glennallen	13	11	14	8%	27%
Haines	0	0	0	N/S	N/S
Homer	47	18	17	-64%	-6%
Hoonah	0	0	0	N/S	N/S
Hooper Bay	7	0	0	N/S	N/S
Juneau	91	85	84	-8%	-1%
Kake ¹	0	0	Served by Petersburg	N/S	N/S
Kenai	136	176	144	6%	-18%
Ketchikan	43	37	32	-26%	-14%
Kodiak	40	48	47	18%	-2%
Kotzebue	55	53	62	13%	17%
Naknek	17	6	12	-29%	N/S
Nenana	0	0	0	N/S	N/S
Nome	72	61	78	8%	28%
Palmer	402	365	426	6%	17%
Petersburg	4	3	3	N/S	N/S
Prince of Wales	20	9	38	90%	N/S
Sand Point	2	0	0	N/S	N/S
Seward	15	22	10	N/S	N/S
Sitka	18	30	29	61%	-3%
Skagway	0	0	0	N/S	N/S
St. Mary's ²	10	9	6	N/S	N/S
St. Paul	4	0	0	N/S	N/S
Tok	0	1	0	N/S	N/S
Unalakleet	0	0	0	N/S	N/S
Unalaska	0	0	0	N/S	N/S
Utqiagvik	30	45	58	93%	29%
Valdez	3	5	5	N/S	N/S
Wrangell	2	1	2	N/S	N/S
Yakutat	0	0	0	N/S	N/S
Total	2,494	2,581	2,714	9%	5%
1st District	178	165	188	6%	14%
2nd District	157	159	198	26%	25%
3rd District	1,680	1,785	1,769	5%	-1%
4th District	479	472	559	17%	18%

N/S: Numbers 10 or less are not compared statistically.

1. Kake court closed in October 2018.

2. St. Mary's court closed in 2016. Records for filings from the venue are still maintained separately.

**Table 4.26. Delinquency Case Filings
FY 18 – FY 20**

Court	FY 18	FY 19	FY 20	Change	
				FY 18 to FY 20	FY 19 to FY 20
Anchorage	296	393	282	-5%	-28%
Angoon	0	0	0	N/S	N/S
Aniak	5	4	6	N/S	N/S
Bethel	27	33	19	-30%	-42%
Cordova	0	1	0	N/S	N/S
Delta Junction	2	0	0	N/S	N/S
Dillingham	17	9	10	N/S	N/S
Emmonak	10	17	4	N/S	N/S
Fairbanks	41	59	34	-17%	-42%
Fort Yukon	1	0	0	N/S	N/S
Galena	4	2	1	N/S	N/S
Glennallen	5	4	3	N/S	N/S
Haines	0	0	0	N/S	N/S
Homer	8	3	12	N/S	N/S
Hoonah	0	0	0	N/S	N/S
Hooper Bay	4	12	14	N/S	17%
Juneau	49	42	26	-47%	-38%
Kake ¹	0	0	Served by Petersburg	N/S	N/S
Kenai	45	42	56	24%	33%
Ketchikan	22	21	15	-32%	-29%
Kodiak	5	6	16	N/S	N/S
Kotzebue	42	32	12	-71%	-62%
Naknek	0	2	0	N/S	N/S
Nenana	0	0	0	N/S	N/S
Nome	32	35	25	-22%	-29%
Palmer	77	86	98	27%	14%
Petersburg	1	2	0	N/S	N/S
Prince of Wales	3	2	0	N/S	N/S
Sand Point	2	2	0	N/S	N/S
Seward	5	5	5	N/S	N/S
Sitka	12	7	6	N/S	N/S
Skagway	0	0	0	N/S	N/S
St. Mary's ²	8	6	7	N/S	N/S
St. Paul	0	0	0	N/S	N/S
Tok	0	0	1	N/S	N/S
Unalakleet	0	0	0	N/S	N/S
Unalaska	1	3	1	N/S	N/S
Utgavik	18	12	11	-39%	-8%
Valdez	6	7	1	N/S	N/S
Wrangell	2	0	0	N/S	N/S
Yakutat	0	0	0	N/S	N/S
Total	750	849	665	-11%	-22%
1st District	89	74	47	-47%	-36%
2nd District	92	79	48	-48%	-39%
3rd District	467	563	484	4%	-14%
4th District	102	133	86	-16%	-35%

N/S: Numbers 10 or less are not compared statistically.

1. Kake court closed in October 2018.

2. St. Mary's court closed in 2016. Records for filings from the venue are still maintained separately.

**Table 4.27. CINA and Delinquency Filings by Case Type
FY 20**

Court	Child in Need of Aid	Petitions to terminate parental rights	Total	Delinquency		
				Delinquency	Petitions to revoke probation	Total
Anchorage	707	336	1,043	185	97	282
Angoon	0	0	0	0	0	0
Aniak	6	0	6	4	2	6
Bethel	98	50	148	14	5	19
Cordova	0	0	0	0	0	0
Delta Junction	0	0	0	0	0	0
Dillingham	23	28	51	9	1	10
Emmonak	18	0	18	4	0	4
Fairbanks	254	127	381	30	4	34
Fort Yukon	0	0	0	0	0	0
Galena	0	0	0	1	0	1
Glennallen	8	6	14	0	3	3
Haines	0	0	0	0	0	0
Homer	13	4	17	11	1	12
Hoonah	0	0	0	0	0	0
Hooper Bay	0	0	0	14	0	14
Juneau	61	23	84	18	8	26
Kake ¹	Served by Petersburg					
Kenai	96	48	144	51	5	56
Ketchikan	28	4	32	7	8	15
Kodiak	37	10	47	15	1	16
Kotzebue	57	5	62	10	2	12
Naknek	6	6	12	0	0	0
Nenana	0	0	0	0	0	0
Nome	45	33	78	20	5	25
Palmer	229	197	426	64	34	98
Petersburg	1	2	3	0	0	0
Prince of Wales	19	19	38	0	0	0
Sand Point	0	0	0	0	0	0
Seward	5	5	10	5	0	5
Sitka	19	10	29	5	1	6
Skagway	0	0	0	0	0	0
St. Mary's ²	6	0	6	7	0	7
St. Paul	0	0	0	0	0	0
Tok	0	0	0	1	0	1
Unalakleet	0	0	0	0	0	0
Unalaska	0	0	0	1	0	1
Utqiagvik	58	0	58	9	2	11
Valdez	5	0	5	0	1	1
Wrangell	2	0	2	0	0	0
Yakutat	0	0	0	0	0	0
Total	1,801	913	2,714	485	180	665
% of total	66.4	33.6	100.0	72.9	27.1	100.0
1st District	130	58	188	30	17	47
2nd District	160	38	198	39	9	48
3rd District	1,129	640	1,769	341	143	484
4th District	382	177	559	75	11	86

1. Kake court closed in October 2018.

2. St. Mary's court closed in 2016. Records for filings from the venue are still maintained separately.

*District Court
Activity*



Pacific silverweed (Argentina pacifica), Anchorage (Third Judicial District)



Frozen seaweed (fucus vesiculosus), Wrangell (First Judicial District)

**Table 5.01. Total District Court Case Filings
FY 18 – FY 20**

Court	FY 18	FY 19	FY 20	Change	
				FY 18 to FY 20	FY 19 to FY 20
Anchorage¹	38,440	36,320	42,396	10%	17%
Angoon	18	22	20	11%	-9%
Aniak	112	131	171	53%	31%
Bethel	1,566	1,746	1,814	16%	4%
Cordova	164	198	130	-21%	-34%
Delta Junction	499	639	366	-27%	-43%
Dillingham	760	951	737	-3%	-23%
Emmonak	171	221	289	69%	31%
Fairbanks	11,190	11,513	11,444	2%	-1%
Fort Yukon	41	72	62	51%	-14%
Galena	56	77	59	5%	-23%
Glennallen	884	560	421	-52%	-25%
Haines	154	189	208	35%	10%
Homer	2,218	1,923	1,699	-23%	-12%
Hoonah	81	78	69	-15%	-12%
Hooper Bay	231	282	224	-3%	-21%
Juneau	4,818	4,760	4,416	-8%	-7%
Kake ²	34	11	Served by Petersburg	N/S	N/S
Kenai	8,361	6,956	7,297	-13%	5%
Ketchikan	1,697	1,908	1,874	10%	-2%
Kodiak	1,131	1,301	1,195	6%	-8%
Kotzebue	921	734	659	-28%	-10%
Naknek	324	314	321	-1%	2%
Nenana	1,628	2,976	2,874	77%	-3%
Nome	1,540	1,232	1,213	-21%	-2%
Palmer	13,552	14,121	12,081	-11%	-14%
Petersburg	173	247	298	72%	21%
Prince of Wales	721	691	638	-12%	-8%
Sand Point	95	98	109	15%	11%
Seward	2,355	1,899	1,773	-25%	-7%
Sitka	924	947	871	-6%	-8%
Skagway	34	19	13	-62%	-32%
St. Mary's ³	152	146	193	27%	32%
St. Paul	43	47	12	-72%	-74%
Tok	1,039	622	338	-67%	-46%
Unalakleet	173	173	104	-40%	-40%
Unalaska	732	564	316	-57%	-44%
Utqiagvik	714	901	766	7%	-15%
Valdez	436	407	340	-22%	-16%
Wrangell	254	181	160	-37%	-12%
Yakutat	82	51	71	-13%	39%
Total	98,518	96,228	98,041	0%	2%
1st District	8,990	9,104	8,638	-4%	-5%
2nd District	3,348	3,040	2,742	-18%	-10%
3rd District	69,495	65,659	68,827	-1%	5%
4th District	16,685	18,425	17,834	7%	-3%

N/S: Numbers 10 or less are not compared statistically.

1. From January 1, 2019 – June 30, 2019 (FY19), the Anchorage Police Department did not file unpaid citations with the court system for entry of default judgment. The FY20 figures include filings for the eighteen-month period from January 1, 2019 – June 30, 2020.

2. Kake court closed in October 2018.

3. St. Mary's court closed in 2016. Records for filings from the venue are still maintained separately.

**Table 5.02. Total District Court Case Dispositions
FY 18 – FY 20**

Court	FY 18	FY 19	FY 20	Change	
				FY 18 to FY 20	FY 19 to FY 20
Anchorage¹	37,632	33,593	43,944	17%	31%
Angoon	20	16	13	-35%	-19%
Aniak	103	124	141	37%	14%
Bethel	1,419	1,638	1,621	14%	-1%
Cordova	164	178	140	-15%	-21%
Delta Junction	542	640	355	-35%	-45%
Dillingham	764	867	639	-16%	-26%
Emmonak	150	195	236	57%	21%
Fairbanks	10,918	11,228	10,630	-3%	-5%
Fort Yukon	50	63	46	-8%	-27%
Galena	65	77	60	-8%	-22%
Glennallen	1,005	487	434	-57%	-11%
Haines	159	192	201	26%	5%
Homer	2,359	1,860	1,597	-32%	-14%
Hoonah	77	74	65	-16%	-12%
Hooper Bay	234	272	190	-19%	-30%
Juneau	3,845	5,282	4,093	6%	-23%
Kake ²	38	17	Served by Petersburg	N/S	N/S
Kenai	8,185	6,552	7,460	-9%	14%
Ketchikan	1,656	1,830	1,857	12%	1%
Kodiak	1,241	1,218	1,353	9%	11%
Kotzebue	839	696	573	-32%	-18%
Naknek	307	322	304	-1%	-6%
Nenana	1,476	2,769	3,000	103%	8%
Nome	1,725	1,261	939	-46%	-26%
Palmer	13,582	13,302	12,234	-10%	-8%
Petersburg	189	203	312	65%	54%
Prince of Wales	735	745	629	-14%	-16%
Sand Point	118	87	77	-35%	-11%
Seward	2,343	1,892	1,726	-26%	-9%
Sitka	933	934	808	-13%	-13%
Skagway	42	36	17	-60%	-53%
St. Mary's ³	146	133	143	-2%	8%
St. Paul	62	40	12	-81%	-70%
Tok	1,004	659	316	-69%	-52%
Unalakleet	156	189	121	-22%	-36%
Unalaska	775	552	354	-54%	-36%
Utqiagvik	600	824	680	13%	-17%
Valdez	407	348	394	-3%	13%
Wrangell	218	188	142	-35%	-24%
Yakutat	81	54	68	-16%	26%
Total	96,364	91,637	97,924	2%	7%
1st District	7,993	9,571	8,205	3%	-14%
2nd District	3,320	2,970	2,313	-30%	-22%
3rd District	68,944	61,298	70,668	3%	15%
4th District	16,107	17,798	16,738	4%	-6%

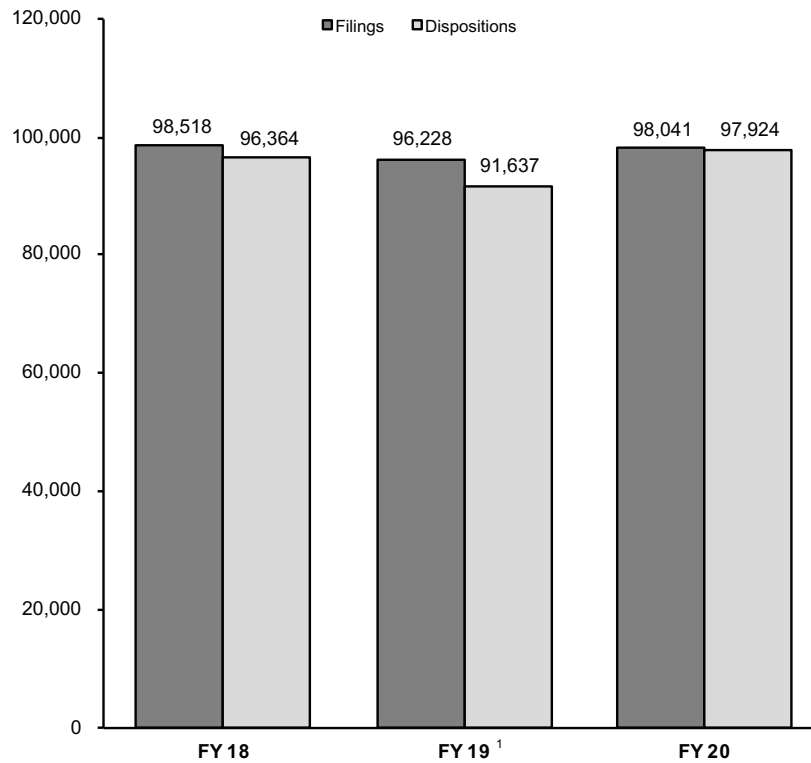
N/S: Numbers 10 or less are not compared statistically.

1. From January 1, 2019 – June 30, 2019 (FY19), the Anchorage Police Department did not file unpaid citations with the court system for entry of default judgment. The FY20 figures include filings for the eighteen-month period from January 1, 2019 – June 30, 2020.

2. Kake court closed in October 2018.

3. St. Mary's court closed in 2016. Records for filings from the venue are still maintained separately.

**Figure 5.01. District Court Filing and Disposition Trends
FY 18 – FY 20**



1. From January 1, 2019 – June 30, 2019 (FY19), the Anchorage Police Department did not file unpaid citations with the court system for entry of default judgment. The FY20 figures include filings for the eighteen-month period from January 1, 2019 – June 30, 2020.

Table 5.03. District Court Clearance Rates
FY 19 – FY 20

Court	Non-minor offense filings		Minor offense filings ¹		Total filings		Clearance rates	
	FY 20	Change from FY 19	FY 20	Change from FY 19	FY 20	Change from FY 19	FY 19	FY 20
Anchorage¹	18,153	-13%	24,243	57%	42,396	17%	92%	104%
Angeon	16	33%	4	N/S	20	-9%	73%	65%
Aniak	144	29%	27	42%	171	31%	95%	82%
Bethel	1,630	13%	184	-39%	1,814	4%	94%	89%
Cordova	67	-20%	63	-45%	130	-34%	90%	108%
Delta Junction	107	2%	259	-51%	366	-43%	100%	97%
Dillingham	459	-15%	278	-33%	737	-23%	91%	87%
Emmonak	269	31%	20	33%	289	31%	88%	82%
Fairbanks	5,058	-7%	6,386	5%	11,444	-1%	98%	93%
Fort Yukon	56	-18%	6	N/S	62	-14%	88%	74%
Galena	49	-20%	10	N/S	59	-23%	100%	102%
Glennallen	137	-2%	284	-32%	421	-25%	87%	103%
Haines	70	9%	138	10%	208	10%	102%	97%
Homer	658	8%	1,041	-21%	1,699	-12%	97%	94%
Hoonah	52	30%	17	-55%	69	-12%	95%	94%
Hooper Bay	214	-20%	10	N/S	224	-21%	96%	85%
Juneau	2,332	-1%	2,084	-14%	4,416	-7%	111%	93%
Kake ²				Served by Petersburg				
Kenai	2,243	-7%	5,054	12%	7,297	5%	94%	102%
Ketchikan	1,288	-3%	586	0%	1,874	-2%	96%	99%
Kodiak	572	-13%	623	-3%	1,195	-8%	94%	113%
Kotzebue	567	-19%	92	171%	659	-10%	95%	87%
Naknek	247	44%	74	-48%	321	2%	103%	95%
Nenana	181	46%	2,693	-6%	2,874	-3%	93%	104%
Nome	820	-8%	393	16%	1,213	-2%	102%	77%
Palmer	4,622	-6%	7,459	-19%	12,081	-14%	94%	101%
Petersburg	195	25%	103	13%	298	21%	82%	105%
Prince of Wales	358	15%	280	-27%	638	-8%	108%	99%
Sand Point	71	-14%	38	153%	109	11%	89%	71%
Seward	271	-7%	1,502	-7%	1,773	-7%	100%	97%
Sitka	496	-15%	375	3%	871	-8%	99%	93%
Skagway	11	-27%	2	N/S	13	-32%	189%	131%
St. Mary's ³	187	32%	6	N/S	193	32%	91%	74%
St. Paul	12	-72%	0	N/S	12	-74%	85%	100%
Tok	100	-20%	238	-52%	338	-46%	106%	93%
Unalakleet	71	-52%	33	27%	104	-40%	109%	116%
Unalaska	119	-31%	197	-50%	316	-44%	98%	112%
Utqiagvik	689	-8%	77	-50%	766	-15%	91%	89%
Valdez	195	7%	145	-36%	340	-16%	86%	116%
Wrangell	110	4%	50	-33%	160	-12%	104%	89%
Yakutat	20	5%	51	59%	71	39%	106%	96%
Total	42,916	-8%	55,125	11%	98,041	2%	95%	100%
1st District	4,948	-1%	3,690	-10%	8,638	-5%	105%	95%
2nd District	2,147	-14%	595	8%	2,742	-10%	98%	84%
3rd District	27,826	-11%	41,001	19%	68,827	5%	93%	103%
4th District	7,995	-1%	9,839	-5%	17,834	-3%	97%	94%

Clearance rate measures whether a court is keeping up with its incoming caseload. Courts aspire to clear (i.e., dispose of) at least as many cases as have been filed in a period by having a clearance rate of 100 percent or higher.

N/S: Numbers 10 or less are not compared statistically.

1. From January 1, 2019 – June 30, 2019 (FY19), the Anchorage Police Department did not file unpaid citations with the court system for entry of default judgment. The FY20 figures include filings for the eighteen-month period from January 1, 2019 – June 30, 2020.

2. Kake court closed in October 2018.

3. St. Mary's court closed in 2016. Records for filings from the venue are still maintained separately.

**Table 5.04. District Court Filings by Case Type
FY 20**

Court	Misdemeanor	Minor offense ¹	Civil			Total
			Small claims	Civil protective orders ²	General civil	
Anchorage¹	8,088	24,243	3,092	3,239	3,734	42,396
Angoon	14	4	1	1	0	20
Aniak	71	27	34	36	3	171
Bethel	1,345	184	21	224	40	1,814
Cordova	54	63	1	5	7	130
Delta Junction	39	259	9	50	9	366
Dillingham	344	278	6	98	11	737
Emmonak	225	20	2	40	2	289
Fairbanks	3,102	6,386	482	760	714	11,444
Fort Yukon	37	6	2	16	1	62
Galena	26	10	5	17	1	59
Glennallen	98	284	7	24	8	421
Haines	36	138	5	23	6	208
Homer	406	1,041	49	136	67	1,699
Hoonah	37	17	2	12	1	69
Hooper Bay	172	10	1	41	0	224
Juneau	1,410	2,084	243	437	242	4,416
Kake ³			Served by Petersburg			
Kenai	1,445	5,054	179	378	241	7,297
Ketchikan	806	586	111	240	131	1,874
Kodiak	379	623	37	95	61	1,195
Kotzebue	377	92	20	145	25	659
Naknek	210	74	1	25	11	321
Nenana	141	2,693	11	15	14	2,874
Nome	581	393	21	193	25	1,213
Palmer	2,198	7,459	801	911	712	12,081
Petersburg	123	103	10	44	18	298
Prince of Wales	260	280	7	77	14	638
Sand Point	64	38	1	2	4	109
Seward	198	1,502	8	39	26	1,773
Sitka	275	375	89	80	52	871
Skagway	4	2	1	4	2	13
St. Mary's ⁴	151	6	0	36	0	193
St. Paul	10	0	0	2	0	12
Tok	64	238	5	22	9	338
Unalakleet	60	33	1	9	1	104
Unalaska	90	197	5	12	12	316
Utgavik	439	77	11	209	30	766
Valdez	132	145	13	44	6	340
Wrangell	72	50	6	19	13	160
Yakutat	8	51	3	8	1	71
Total	23,591	55,125	5,303	7,768	6,254	98,041
% of total	24.1	56.2	5.4	7.9	6.4	100.0
1st District	3,045	3,690	478	945	480	8,638
2nd District	1,457	595	53	556	81	2,742
3rd District	13,716	41,001	4,200	5,010	4,900	68,827
4th District	5,373	9,839	572	1,257	793	17,834

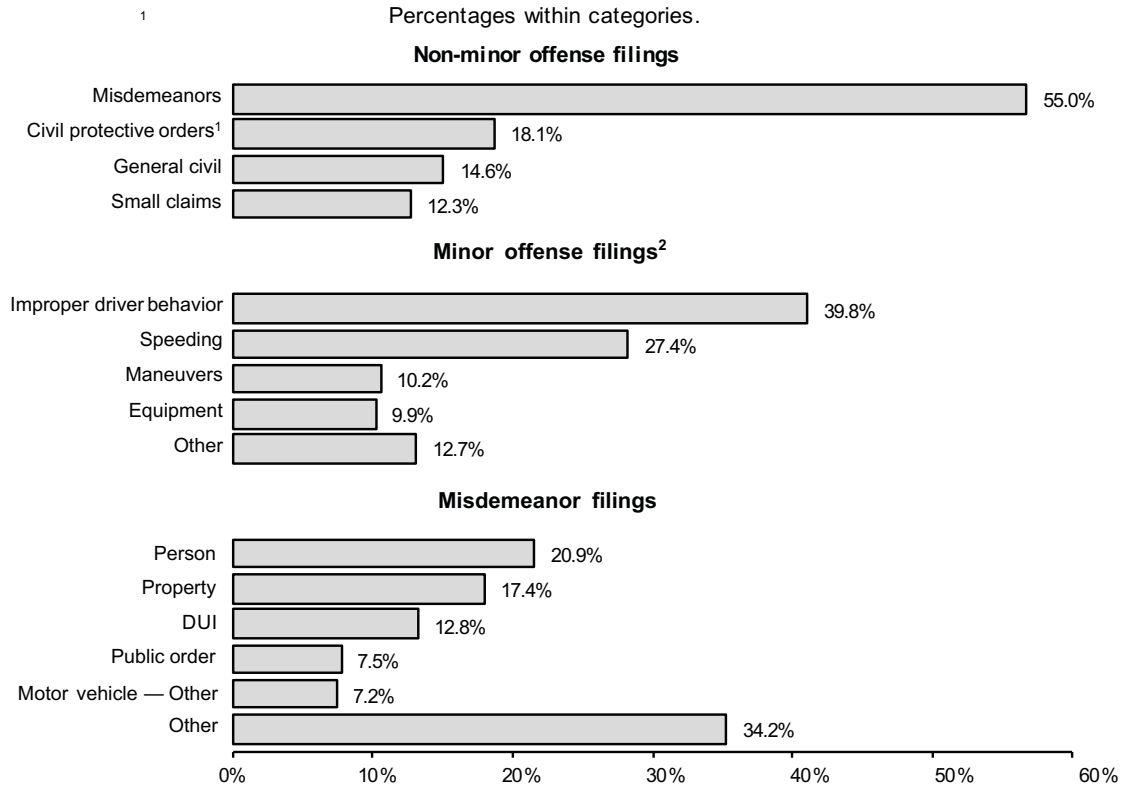
1. From January 1, 2019 – June 30, 2019 (FY19), the Anchorage Police Department did not file unpaid citations with the court system for entry of default judgment. The FY20 figures include filings for the eighteen-month period from January 1, 2019 – June 30, 2020.

2. The Civil Protective Order case group includes petitions for domestic violence, stalking, and sexual assault protective orders.

3. Kake court closed in October 2018.

4. St. Mary's court closed in 2016. Records for filings from the venue are still maintained separately.

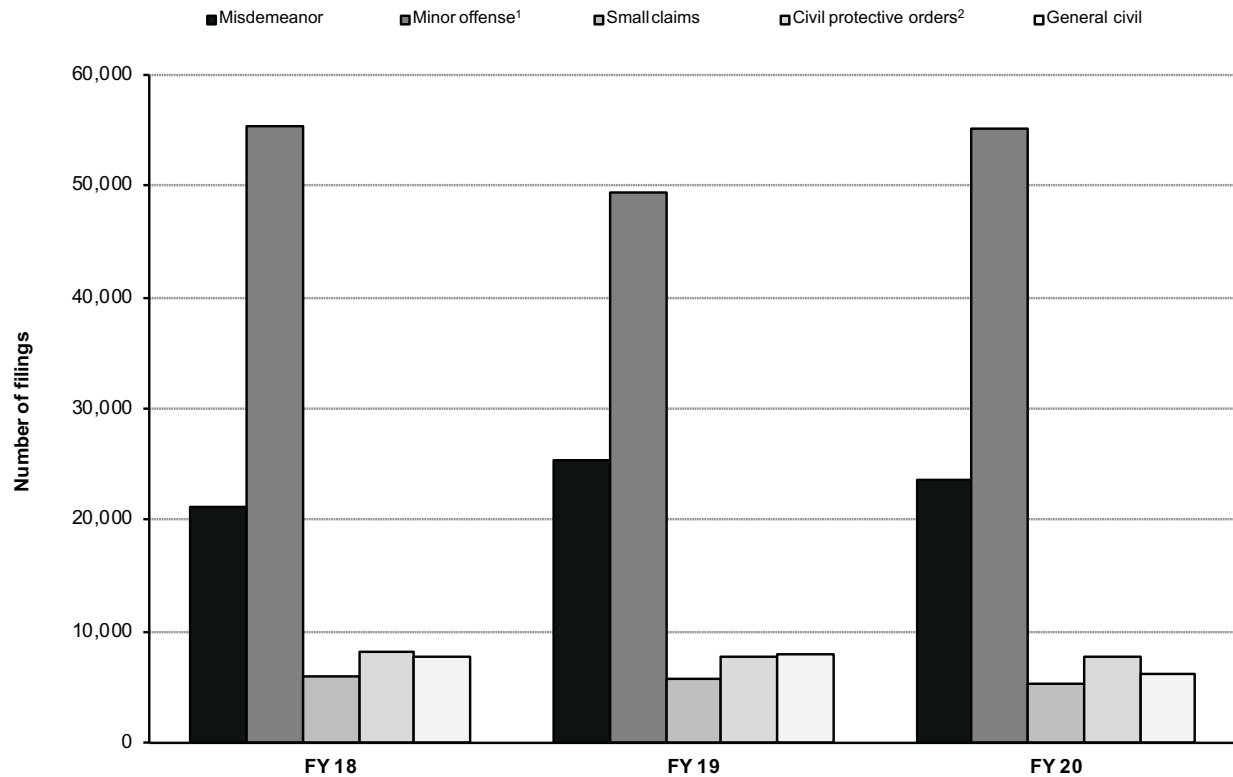
**Figure 5.02. Composition of District Court Case Filings
FY 20**



This chart analyzes the composition of cases filed in District Court during FY20. Misdemeanor cases represent approximately 55.0% of the non-minor offense caseload. Approximately 20.3.0% of all misdemeanor cases involve driving while intoxicated or another criminal traffic violation (for example, driving with suspended license).

1. The Civil Protective Order case group includes petitions for domestic violence, stalking and sexual assault protective orders.
2. From January 1, 2019 – June 30, 2019 (FY19), the Anchorage Police Department did not file unpaid citations with the court system for entry of default judgment. The FY20 figures include filings for the eighteen-month period from January 1, 2019 – June 30, 2020.

Figure 5.03. District Court Filing Trends by Case Type
FY 18 – FY 20



Filing Type	FY 18	FY 19	FY 20	FY 18 to FY 20 change	FY 19 to FY 20 change
Misdemeanor	21,232	25,288	23,591	11%	-7%
Minor offense ¹	55,482	49,493	55,125	-1%	11%
Small claims	5,984	5,699	5,303	-11%	-7%
Civil protective orders ²	8,084	7,763	7,768	-4%	0%
General civil	7,736	7,985	6,254	-19%	-22%
Total	98,518	96,228	98,041	0%	2%

1. From January 1, 2019 – June 30, 2019 (FY19), the Anchorage Police Department did not file unpaid citations with the court system for entry of default judgment. The FY20 figures include filings for the eighteen-month period from January 1, 2019 – June 30, 2020.

2. The Civil Protective Order case group includes petitions for domestic violence, stalking, and sexual assault protective orders.

**Table 5.05. District Court Dispositions by Case Type
FY 20**

Court	Misdemeanor	Minor offense ¹	Civil			Total
			Small claims	Civil protective orders ²	General civil	
Anchorage¹	7,257	26,319	3,106	3,178	4,084	43,944
Angoon	6	5	0	1	1	13
Aniak	51	25	28	35	2	141
Bethel	1,146	194	12	216	53	1,621
Cordova	51	74	2	6	7	140
Delta Junction	27	254	12	51	11	355
Dillingham	284	236	9	97	13	639
Emmonak	183	17	1	32	3	236
Fairbanks	2,912	5,637	489	750	842	10,630
Fort Yukon	24	3	0	17	2	46
Galena	29	9	3	16	3	60
Glennallen	70	319	10	25	10	434
Haines	28	138	8	22	5	201
Homer	324	1,015	44	130	84	1,597
Hoonah	26	22	3	10	4	65
Hooper Bay	131	12	2	45	0	190
Juneau	1,257	1,939	241	440	216	4,093
Kake ³	Served by Petersburg					
Kenai	1,342	5,326	195	378	219	7,460
Ketchikan	810	574	92	242	139	1,857
Kodiak	368	791	39	95	60	1,353
Kotzebue	310	76	19	146	22	573
Naknek	185	83	2	22	12	304
Nenana	125	2,828	12	15	20	3,000
Nome	455	265	7	187	25	939
Palmer	1,890	7,965	704	901	774	12,234
Petersburg	130	111	9	43	19	312
Prince of Wales	259	270	10	78	12	629
Sand Point	43	29	1	1	3	77
Seward	130	1,511	13	40	32	1,726
Sitka	254	365	47	81	61	808
Skagway	5	3	0	4	5	17
St. Mary's ⁴	103	6	2	32	0	143
St. Paul	9	0	0	1	2	12
Tok	57	214	11	21	13	316
Unalakleet	80	18	16	7	0	121
Unalaska	107	214	4	12	17	354
Utqiagvik	383	71	12	185	29	680
Valdez	128	200	11	44	11	394
Wrangell	74	35	6	19	8	142
Yakutat	6	50	3	8	1	68
Total	21,059	57,223	5,185	7,633	6,824	97,924
% of total	21.5	58.4	5.3	7.8	7.0	100.0
1st District	2,855	3,512	419	948	471	8,205
2nd District	1,228	430	54	525	76	2,313
3rd District	12,188	44,082	4,140	4,930	5,328	70,668
4th District	4,788	9,199	572	1,230	949	16,738

1. From January 1, 2019 – June 30, 2019 (FY19), the Anchorage Police Department did not file

unpaid citations with the court system for entry of default judgment. The FY20 figures

include filings for the eighteen-month period from January 1, 2019 – June 30, 2020.

2. The Civil Protective Order case group includes petitions for domestic violence, stalking, and sexual assault protective orders.

3. Kake court closed in October 2018.

4. St. Mary's court closed in 2016. Records for filings from the venue are still maintained separately.

**Table 5.06. District Court Non-Minor Offense Case Filings
FY 18 – FY 20**

Court	FY 18	FY 19	FY 20	Change	
				FY 18 to FY 20	FY 19 to FY 20
Anchorage	19,595	20,873	18,153	-7%	-13%
Angoon	18	12	16	-11%	33%
Aniak	96	112	144	50%	29%
Bethel	1,388	1,445	1,630	17%	13%
Cordova	66	84	67	2%	-20%
Delta Junction	100	105	107	7%	2%
Dillingham	432	538	459	6%	-15%
Emmonak	157	206	269	71%	31%
Fairbanks	4,962	5,429	5,058	2%	-7%
Fort Yukon	35	68	56	60%	-18%
Galena	43	61	49	14%	-20%
Glennallen	157	140	137	-13%	-2%
Haines	54	64	70	30%	9%
Homer	652	612	658	1%	8%
Hoonah	32	40	52	63%	30%
Hooper Bay	224	269	214	-4%	-20%
Juneau	2,200	2,347	2,332	6%	-1%
Kake ¹	18	7	Served by Petersburg	N/S	N/S
Kenai	2,196	2,424	2,243	2%	-7%
Ketchikan	942	1,324	1,288	37%	-3%
Kodiak	544	659	572	5%	-13%
Kotzebue	842	700	567	-33%	-19%
Naknek	157	171	247	57%	44%
Nenana	94	124	181	93%	46%
Nome	972	894	820	-16%	-8%
Palmer	4,161	4,909	4,622	11%	-6%
Petersburg	98	156	195	99%	25%
Prince of Wales	301	310	358	19%	15%
Sand Point	61	83	71	16%	-14%
Seward	291	290	271	-7%	-7%
Sitka	545	582	496	-9%	-15%
Skagway	25	15	11	-56%	-27%
St. Mary's ²	142	142	187	32%	32%
St. Paul	42	43	12	-71%	-72%
Tok	167	125	100	-40%	-20%
Unalakleet	143	147	71	-50%	-52%
Unalaska	151	172	119	-21%	-31%
Utgavik	586	746	689	18%	-8%
Valdez	167	182	195	17%	7%
Wrangell	149	106	110	-26%	4%
Yakutat	31	19	20	-35%	5%
Total	43,036	46,735	42,916	0%	-8%
1st District	4,413	4,982	4,948	12%	-1%
2nd District	2,543	2,487	2,147	-16%	-14%
3rd District	28,672	31,180	27,826	-3%	-11%
4th District	7,408	8,086	7,995	8%	-1%

N/S: Numbers 10 or less are not compared statistically.

1. Kake court closed in October 2018.

2. St. Mary's court closed in 2016. Records for filings from the venue are still maintained separately.

**Table 5.07. District Court Non-Minor Offense Case Dispositions
FY 18 – FY 20**

Court	FY 18	FY 19	FY 20	Change	
				FY 18 to FY 20	FY 19 to FY 20
Anchorage	18,570	20,523	17,625	-5%	-14%
Angoon	15	10	8	N/S	N/S
Aniak	91	100	116	27%	16%
Bethel	1,226	1,391	1,427	16%	3%
Cordova	53	75	66	25%	-12%
Delta Junction	105	109	101	-4%	-7%
Dillingham	418	482	403	-4%	-16%
Emmonak	133	180	219	65%	22%
Fairbanks	4,776	4,904	4,993	5%	2%
Fort Yukon	41	59	43	5%	-27%
Galena	53	60	51	-4%	-15%
Glennallen	130	123	115	-12%	-7%
Haines	61	66	63	3%	-5%
Homer	648	559	582	-10%	4%
Hoonah	32	36	43	34%	19%
Hooper Bay	226	258	178	-21%	-31%
Juneau	1,954	2,118	2,154	10%	2%
Kake ¹	14	13	Served by Petersburg	N/S	N/S
Kenai	2,127	1,942	2,134	0%	10%
Ketchikan	925	1,189	1,283	39%	8%
Kodiak	604	584	562	-7%	-4%
Kotzebue	756	661	497	-34%	-25%
Naknek	139	169	221	59%	31%
Nenana	114	119	172	51%	45%
Nome	1,005	873	674	-33%	-23%
Palmer	3,858	4,322	4,269	11%	-1%
Petersburg	114	123	201	76%	63%
Prince of Wales	279	317	359	29%	13%
Sand Point	76	71	48	-37%	-32%
Seward	283	257	215	-24%	-16%
Sitka	554	562	443	-20%	-21%
Skagway	29	27	14	-52%	-48%
St. Mary's ²	137	127	137	0%	8%
St. Paul	46	35	12	-74%	-66%
Tok	171	133	102	-40%	-23%
Unalakleet	123	148	103	-16%	-30%
Unalaska	137	150	140	2%	-7%
Utqiagvik	458	681	609	33%	-11%
Valdez	147	171	194	32%	13%
Wrangell	120	102	107	-11%	5%
Yakutat	28	22	18	-36%	-18%
Total	40,776	43,851	40,701	0%	-7%
1st District	4,125	4,585	4,693	14%	2%
2nd District	2,342	2,363	1,883	-20%	-20%
3rd District	27,236	29,463	26,586	-2%	-10%
4th District	7,073	7,440	7,539	7%	1%

N/S: Numbers 10 or less are not compared statistically.

1. Kake court closed in October 2018.

2. St. Mary's court closed in 2016. Records for filings from the venue are still maintained separately.

**Table 5.08. Misdemeanor Case Filings
FY 18 – FY 20**

Court	FY 18	FY 19	FY 20	Change	
				FY 18 to FY 20	FY 19 to FY 20
Anchorage	8,208	9,907	8,088	-1%	-18%
Angoon	8	6	14	N/S	N/S
Aniak	41	75	71	73%	-5%
Bethel	980	1,056	1,345	37%	27%
Cordova	41	62	54	32%	-13%
Delta Junction	23	34	39	70%	15%
Dillingham	294	396	344	17%	-13%
Emmonak	85	160	225	165%	41%
Fairbanks	2,490	2,898	3,102	25%	7%
Fort Yukon	19	42	37	95%	-12%
Galena	34	35	26	-24%	-26%
Glennallen	103	96	98	-5%	2%
Haines	20	33	36	80%	9%
Homer	347	347	406	17%	17%
Hoonah	24	25	37	54%	48%
Hooper Bay	156	214	172	10%	-20%
Juneau	1,128	1,401	1,410	25%	1%
Kake ¹	12	5	Served by Petersburg	N/S	N/S
Kenai	1,242	1,440	1,445	16%	0%
Ketchikan	488	830	806	65%	-3%
Kodiak	307	384	379	23%	-1%
Kotzebue	664	504	377	-43%	-25%
Naknek	113	144	210	86%	46%
Nenana	71	83	141	99%	70%
Nome	713	631	581	-19%	-8%
Palmer	1,705	2,324	2,198	29%	-5%
Petersburg	56	109	123	120%	13%
Prince of Wales	202	243	260	29%	7%
Sand Point	45	76	64	42%	-16%
Seward	192	188	198	3%	5%
Sitka	379	380	275	-27%	-28%
Skagway	13	5	4	N/S	N/S
St. Mary's ²	110	108	151	37%	40%
St. Paul	25	30	10	N/S	N/S
Tok	98	73	64	-35%	-12%
Unalakleet	114	133	60	-47%	-55%
Unalaska	119	129	90	-24%	-30%
Utqiagvik	344	473	439	28%	-7%
Valdez	113	132	132	17%	0%
Wrangell	86	69	72	-16%	4%
Yakutat	20	8	8	N/S	N/S
Total	21,232	25,288	23,591	11%	-7%
1st District	2,436	3,114	3,045	25%	-2%
2nd District	1,835	1,741	1,457	-21%	-16%
3rd District	12,854	15,655	13,716	7%	-12%
4th District	4,107	4,778	5,373	31%	12%

N/S: Numbers 10 or less are not compared statistically.

1. Kake court closed in October 2018.

2. St. Mary's court closed in 2016. Records for filings from the venue are still maintained separately.

**Table 5.09. Misdemeanor Filings by Case Type
FY 20**

Court	Person	Property	Drugs	Weapon	Public		DUI	Reckless driving	Motor vehicle —	Protective order	Fish & Game	Other	Total
					order				other	violation			
Anchorage	1,595	1,362	168	87	669		997	15	213	9	3	2,970	8,088
Angoon	8	2	0	0	0		0	0	1	0	0	3	14
Aniak	34	6	0	2	7		2	0	0	1	10	9	71
Bethel	445	141	23	11	211		112	0	16	15	3	368	1,345
Cordova	13	18	0	1	1		8	0	10	0	2	1	54
Delta Junction	5	8	1	0	0		10	0	1	1	7	6	39
Dillingham	100	42	1	3	17		26	1	9	13	46	86	344
Emmonak	93	20	0	1	24		28	1	0	3	0	55	225
Fairbanks	535	688	86	19	138		400	13	181	63	17	962	3,102
Fort Yukon	21	4	0	0	6		2	0	0	0	1	3	37
Galena	13	5	1	0	0		2	0	0	0	0	5	26
Glennallen	29	6	1	0	1		26	0	9	2	9	15	98
Haines	6	0	0	1	2		10	1	6	3	2	5	36
Homer	64	86	12	3	18		91	0	75	4	3	50	406
Hoonah	8	3	0	0	2		7	0	2	2	1	12	37
Hooper Bay	108	17	0	2	13		18	0	0	2	0	12	172
Juneau	234	434	21	7	209		129	7	122	1	10	236	1,410
Kake ¹	Served by Petersburg												
Kenai	179	213	74	12	46		248	10	321	28	16	298	1,445
Ketchikan	136	116	10	2	50		83	1	64	28	8	308	806
Kodiak	62	50	10	0	24		83	0	48	11	23	68	379
Kotzebue	168	65	4	0	64		18	0	7	9	2	40	377
Naknek	41	10	2	4	15		12	0	4	3	109	10	210
Nenana	24	14	4	4	2		29	0	18	1	17	28	141
Nome	169	104	0	3	80		46	1	5	16	0	157	581
Palmer	389	484	104	15	58		387	7	393	48	20	293	2,198
Petersburg	18	9	3	0	1		12	0	8	7	15	50	123
Prince of Wales	36	28	6	1	6		18	0	40	2	3	120	260
Sand Point	17	2	3	1	5		16	0	5	0	6	9	64
Seward	34	29	4	2	15		45	2	48	4	2	13	198
Sitka	47	39	4	1	11		36	1	29	13	26	68	275
Skagway	0	0	0	0	0		3	0	0	0	0	1	4
St. Mary's ²	85	8	0	1	8		19	0	0	1	0	29	151
St. Paul	4	2	0	0	1		0	0	0	0	0	3	10
Tok	21	14	1	1	1		8	0	4	2	1	11	64
Unalakleet	29	7	1	0	4		7	0	0	0	0	12	60
Unalaska	17	14	0	0	14		20	1	8	0	9	7	90
Utgavik	121	46	5	5	39		40	1	11	9	0	162	439
Valdez	21	12	3	2	5		19	0	29	1	1	39	132
Wrangell	11	6	3	0	4		9	0	12	0	0	27	72
Yakutat	1	0	1	0	0		3	0	0	0	2	1	8
Total	4,941	4,114	556	191	1,771		3,029	62	1,699	302	374	6,552	23,591
% of total	20.9	17.4	2.4	0.8	7.5		12.8	0.3	7.2	1.3	1.6	27.8	100.0
1st District	505	637	48	12	285		310	10	284	56	67	831	3,045
2nd District	487	222	10	8	187		111	2	23	34	2	371	1,457
3rd District	2,565	2,330	382	130	889		1,978	36	1,172	123	249	3,862	13,716
4th District	1,384	925	116	41	410		630	14	220	89	56	1,488	5,373

1. Kake court closed in October 2018.

2. St. Mary's court closed in 2016. Records for filings from the venue are still maintained separately.

**Table 5.10. Criminal Case Types
FY 20**

Person	Public Order
Homicide	Riot
Assault	Disorderly Conduct
Reckless Endangerment	Harassment
Kidnapping	Indecent Viewing or Photography
Custodial Interference	Possess or Distribute Child Pornography
Human Trafficking	Cruelty to Animals
Sex Offenses	Recruiting Gang Members
Robbery	Gambling
Extortion	Alcohol Licensing Laws
Coercion	
	Motor Vehicle DUI
Property	Motor Vehicle Reckless Driving
Theft	
Burglary	Motor Vehicle Other
Criminal Trespass	
Vehicle Theft	Protection Order Violation
Arson	
Criminal Mischief	Fish and Game
Business and Commercial Offenses	
	Other
Drugs	Offenses against Public Administration
Misconduct Involving a Controlled Substance	Offenses against Family and
Manufacture, Delivery or Possession of	Vulnerable Adults
Imitation Controlled Substance	All other offenses, including cases in which
	a charging document was never filed
Weapons	
Misconduct Involving Weapons	
Criminal Possession of Explosives	
Unlawful Furnishing of Explosives	

Criminal cases typically contain multiple charges. The Alaska Court System categorizes cases for reporting purposes based on the most serious charge.

In FY07 the Alaska Court System changed the way it categorizes criminal cases for annual reporting. The categories now conform to the National Center for State Courts' national model for caseload statistical reporting. This change is intended to make Alaska statistics easier to compile, understand, and compare to those of other jurisdictions.

Table 5.11. Misdemeanor Case Dispositions
FY 18 – FY 20

Court	FY 18	FY 19	FY 20	Change	
				FY 18 to FY 20	FY 19 to FY 20
Anchorage	7,348	9,651	7,257	-1%	-25%
Angoon	8	4	6	N/S	N/S
Aniak	46	60	51	11%	-15%
Bethel	831	1,006	1,146	38%	14%
Cordova	29	52	51	76%	-2%
Delta Junction	35	34	27	-23%	-21%
Dillingham	284	345	284	0%	-18%
Emmonak	62	137	183	195%	34%
Fairbanks	2,202	2,659	2,912	32%	10%
Fort Yukon	26	39	24	-8%	-38%
Galena	42	39	29	-31%	-26%
Glennallen	89	86	70	-21%	-19%
Haines	32	31	28	-12%	-10%
Homer	333	313	324	-3%	4%
Hoonah	19	25	26	37%	4%
Hooper Bay	162	205	131	-19%	-36%
Juneau	976	1,179	1,257	29%	7%
Kake ¹	5	10	Served by Petersburg	N/S	N/S
Kenai	1,161	1,126	1,342	16%	19%
Ketchikan	478	706	810	69%	15%
Kodiak	323	330	368	14%	12%
Kotzebue	575	472	310	-46%	-34%
Naknek	97	137	185	91%	35%
Nenana	92	89	125	36%	40%
Nome	735	607	455	-38%	-25%
Palmer	1,550	1,925	1,890	22%	-2%
Petersburg	62	78	130	110%	67%
Prince of Wales	184	248	259	41%	4%
Sand Point	53	64	43	-19%	-33%
Seward	191	158	130	-32%	-18%
Sitka	388	371	254	-35%	-32%
Skagway	19	15	5	N/S	N/S
St. Mary's ²	107	93	103	-4%	11%
St. Paul	29	25	9	N/S	N/S
Tok	105	83	57	-46%	-31%
Unalakleet	95	131	80	-16%	-39%
Unalaska	108	118	107	-1%	-9%
Utgavik	212	434	383	81%	-12%
Valdez	95	135	128	35%	-5%
Wrangell	66	59	74	12%	25%
Yakutat	17	10	6	N/S	N/S
Total	19,271	23,289	21,059	9%	-10%
1st District	2,254	2,736	2,855	27%	4%
2nd District	1,617	1,644	1,228	-24%	-25%
3rd District	11,690	14,465	12,188	4%	-16%
4th District	3,710	4,444	4,788	29%	8%

N/S: Numbers 10 or less are not compared statistically.

1. Kake court closed in October 2018.

2. St. Mary's court closed in 2016. Records for filings from the venue are still maintained separately.

**Table 5.12. Misdemeanor Case Dispositions by Manner of Disposition
FY 20**

	Non-trial			Trial		Total
	Case dismissed	Guilty plea	Other	Guilty	Not guilty	
Anchorage	3,766	3,455	5	21	10	7,257
Angoon	1	5	0	0	0	6
Aniak	22	29	0	0	0	51
Bethel	484	657	0	1	4	1,146
Cordova	16	34	0	1	0	51
Delta Junction	9	18	0	0	0	27
Dillingham	101	182	0	1	0	284
Emmonak	59	124	0	0	0	183
Fairbanks	1,457	1,441	2	10	2	2,912
Fort Yukon	15	9	0	0	0	24
Galena	16	12	1	0	0	29
Glennallen	22	48	0	0	0	70
Haines	11	16	1	0	0	28
Homer	101	222	0	1	0	324
Hoonah	11	15	0	0	0	26
Hooper Bay	69	61	0	1	0	131
Juneau	715	536	3	3	0	1,257
Kake ¹	Served by Petersburg					
Kenai	401	919	1	14	7	1,342
Ketchikan	444	359	4	2	1	810
Kodiak	111	257	0	0	0	368
Kotzebue	147	163	0	0	0	310
Naknek	42	142	0	1	0	185
Nenana	47	77	0	1	0	125
Nome	254	201	0	0	0	455
Palmer	819	1,065	4	1	1	1,890
Petersburg	51	78	0	1	0	130
Prince of Wales	175	83	0	1	0	259
Sand Point	26	17	0	0	0	43
Seward	40	88	0	2	0	130
Sitka	113	138	0	3	0	254
Skagway	3	2	0	0	0	5
St. Mary's ²	48	55	0	0	0	103
St. Paul	4	5	0	0	0	9
Tok	28	29	0	0	0	57
Unalakleet	42	38	0	0	0	80
Unalaska	57	50	0	0	0	107
Utqiagvik	195	187	0	1	0	383
Valdez	52	75	0	1	0	128
Wrangell	38	36	0	0	0	74
Yakutat	3	3	0	0	0	6
Total	10,015	10,931	21	67	25	21,059
% of total	47.6	51.9	0.1	0.3	0.1	100.0
1st District	1,565	1,271	8	10	1	2,855
2nd District	638	589	0	1	0	1,228
3rd District	5,558	6,559	10	43	18	12,188
4th District	2,254	2,512	3	13	6	4,788

Note: Due to the covid pandemic, jury trials in criminal and civil cases were suspended by order of the Supreme Court, March 16 – June 30, 2020.

1. Kake court closed in October 2018.

2. St. Mary's court closed in 2016. Records for filings from the venue are still maintained separately.

Table 5.13. Felony Filings in District Court¹
FY 18 – FY 20

Court	FY 18	FY 19	FY 20	Change	
				FY 18 to FY 20	FY 19 to FY 20
Anchorage	3,303	3,254	3,258	-1%	0%
Angoon	0	1	1	N/S	N/S
Aniak	39	37	45	15%	22%
Bethel	216	183	221	2%	21%
Cordova	5	9	5	N/S	N/S
Delta Junction	12	6	17	42%	N/S
Dillingham	71	107	128	80%	20%
Emmonak	49	49	63	29%	29%
Fairbanks	541	537	606	12%	13%
Fort Yukon	24	16	22	-8%	38%
Galena	13	16	13	0%	-19%
Glennallen	15	18	16	7%	-11%
Haines	4	6	4	N/S	N/S
Homer	98	97	114	16%	18%
Hoonah	3	0	4	N/S	N/S
Hooper Bay	39	23	32	-18%	39%
Juneau	152	149	186	22%	25%
Kake ²	2	0	Served by Petersburg	N/S	N/S
Kenai	372	429	451	21%	5%
Ketchikan	144	124	106	-26%	-15%
Kodiak	80	100	104	30%	4%
Kotzebue	285	234	169	-41%	-28%
Naknek	24	37	36	50%	-3%
Nenana	27	33	30	11%	-9%
Nome	104	118	148	42%	25%
Palmer	391	427	509	30%	19%
Petersburg	14	20	15	7%	-25%
Prince of Wales	40	45	50	25%	11%
Sand Point	22	16	19	-14%	19%
Seward	59	58	72	22%	24%
Sitka	64	42	41	-36%	-2%
Skagway	2	0	1	N/S	N/S
St. Mary's ³	43	25	63	47%	152%
St. Paul	5	8	7	N/S	N/S
Tok	23	20	28	22%	40%
Unalakleet	71	73	66	-7%	-10%
Unalaska	34	28	16	-53%	-43%
Utgiaqvik	87	78	73	-16%	-6%
Valdez	13	10	24	85%	N/S
Wrangell	14	14	9	N/S	N/S
Yakutat	0	3	1	N/S	N/S
Total	6,504	6,450	6,773	4%	5%
1st District	439	404	418	-5%	3%
2nd District	547	503	456	-17%	-9%
3rd District	4,492	4,598	4,759	6%	4%
4th District	1,026	945	1,140	11%	21%

N/S: Numbers 10 or less are not compared statistically.

1. This chart is for information purposes only. The totals are not included in the District Court totals.

Felony cases are reported as Superior Court cases, regardless of where the case was initiated.

2. Kake court closed in October 2018.

3. St. Mary's court closed in 2016. Records for filings from the venue are still maintained separately.

**Table 5.14. Post-judgment Filings:
Misdemeanor Petitions to Revoke Probation
FY 18 – FY 20**

Court	FY 18	FY 19	FY 20	Change	
				FY 18 to FY 20	FY 19 to FY 20
Anchorage	637	616	320	-50%	-48%
Angoon	0	1	0	N/S	N/S
Aniak	6	3	1	N/S	N/S
Bethel	33	30	48	45%	60%
Cordova	2	2	3	N/S	N/S
Delta Junction	0	1	2	N/S	N/S
Dillingham	6	7	13	N/S	N/S
Emmonak	6	6	5	N/S	N/S
Fairbanks	321	217	205	-36%	-6%
Fort Yukon	2	0	0	N/S	N/S
Galena	0	1	0	N/S	N/S
Glennallen	16	4	6	N/S	N/S
Haines	1	0	0	N/S	N/S
Homer	23	25	15	-35%	-40%
Hoonah	0	0	1	N/S	N/S
Hooper Bay	9	0	4	N/S	N/S
Juneau	313	158	93	-70%	-41%
Kake ¹	0	0	Served by Petersburg	N/S	N/S
Kenai	209	190	126	-40%	-34%
Ketchikan	37	46	85	130%	85%
Kodiak	7	23	47	N/S	104%
Kotzebue	116	88	43	-63%	-51%
Naknek	2	0	3	N/S	N/S
Nenana	10	5	4	N/S	N/S
Nome	95	45	44	-54%	-2%
Palmer	151	105	120	-21%	14%
Petersburg	0	6	3	N/S	N/S
Prince of Wales	15	12	6	N/S	N/S
Sand Point	3	3	2	N/S	N/S
Seward	61	27	10	N/S	N/S
Sitka	20	16	10	N/S	N/S
Skagway	0	0	0	N/S	N/S
St. Mary's ²	13	6	8	N/S	N/S
St. Paul	0	0	0	N/S	N/S
Tok	9	3	5	N/S	N/S
Unalakleet	9	3	0	N/S	N/S
Unalaska	2	1	10	N/S	N/S
Utqiagvik	22	24	10	N/S	N/S
Valdez	5	4	9	N/S	N/S
Wrangell	6	6	1	N/S	N/S
Yakutat	0	0	0	N/S	N/S
Total	2,167	1,684	1,262	-42%	-25%
1st District	392	245	199	-49%	-19%
2nd District	242	160	97	-60%	-39%
3rd District	1,124	1,007	684	-39%	-32%
4th District	409	272	282	-31%	4%

N/S: Numbers 10 or less are not compared statistically.

1. Kake court closed in October 2018.

2. St. Mary's court closed in 2016. Records for filings from the venue are still maintained separately.

**Table 5.15. Small Claims Case Filings
FY 18 – FY 20**

Court	FY 18	FY 19	FY 20	Change	
				FY 18 to FY 20	FY 19 to FY 20
Anchorage	3,595	3,249	3,092	-14%	-5%
Angoon	2	0	1	N/S	N/S
Aniak	4	3	34	N/S	N/S
Bethel	43	26	21	-51%	-19%
Cordova	6	2	1	N/S	N/S
Delta Junction	16	11	9	N/S	N/S
Dillingham	16	16	6	N/S	N/S
Emmonak	3	2	2	N/S	N/S
Fairbanks	617	666	482	-22%	-28%
Fort Yukon	2	5	2	N/S	N/S
Galena	2	6	5	N/S	N/S
Glennallen	11	12	7	N/S	N/S
Haines	7	6	5	N/S	N/S
Homer	48	43	49	2%	14%
Hoonah	0	4	2	N/S	N/S
Hooper Bay	4	2	1	N/S	N/S
Juneau	360	247	243	-32%	-2%
Kake ¹	0	0	Served by Petersburg	N/S	N/S
Kenai	217	230	179	-18%	-22%
Ketchikan	78	91	111	42%	22%
Kodiak	49	45	37	-24%	-18%
Kotzebue	18	19	20	11%	5%
Naknek	4	4	1	N/S	N/S
Nenana	5	8	11	N/S	N/S
Nome	72	27	21	-71%	-22%
Palmer	660	797	801	21%	1%
Petersburg	7	7	10	N/S	N/S
Prince of Wales	16	10	7	N/S	N/S
Sand Point	1	1	1	N/S	N/S
Seward	19	25	8	N/S	N/S
Sitka	32	35	89	178%	154%
Skagway	0	2	1	N/S	N/S
St. Mary's ²	2	2	0	N/S	N/S
St. Paul	0	0	0	N/S	N/S
Tok	14	17	5	N/S	N/S
Unalakleet	2	2	1	N/S	N/S
Unalaska	3	3	5	N/S	N/S
Utgavik	28	49	11	-61%	-78%
Valdez	11	9	13	18%	N/S
Wrangell	8	9	6	N/S	N/S
Yakutat	2	7	3	N/S	N/S
Total	5,984	5,699	5,303	-11%	-7%
1st District	512	418	478	-7%	14%
2nd District	120	97	53	-56%	-45%
3rd District	4,640	4,436	4,200	-9%	-5%
4th District	712	748	572	-20%	-24%

N/S: Numbers 10 or less are not compared statistically.

1. Kake court closed in October 2018.

2. St. Mary's court closed in 2016. Records for filings from the venue are still maintained separately.

Table 5.16. Small Claims Case Dispositions
FY 18 – FY 20

Court	FY 18	FY 19	FY 20	Change	
				FY 18 to FY 20	FY 19 to FY 20
Anchorage	3,926	3,372	3,106	-21%	-8%
Angoon	0	1	0	N/S	N/S
Aniak	5	3	28	N/S	N/S
Bethel	41	34	12	-71%	-65%
Cordova	4	3	2	N/S	N/S
Delta Junction	18	13	12	-33%	-8%
Dillingham	16	16	9	N/S	N/S
Emmonak	3	4	1	N/S	N/S
Fairbanks	714	572	489	-32%	-15%
Fort Yukon	7	0	0	N/S	N/S
Galena	4	5	3	N/S	N/S
Glennallen	6	6	10	N/S	N/S
Haines	7	6	8	N/S	N/S
Homer	63	47	44	-30%	-6%
Hoonah	2	3	3	N/S	N/S
Hooper Bay	2	4	2	N/S	N/S
Juneau	310	303	241	-22%	-20%
Kake ¹	3	0	Served by Petersburg	N/S	N/S
Kenai	209	160	195	-7%	22%
Ketchikan	82	96	92	12%	-4%
Kodiak	77	45	39	-49%	-13%
Kotzebue	20	14	19	-5%	36%
Naknek	8	4	2	N/S	N/S
Nenana	5	6	12	N/S	N/S
Nome	83	38	7	N/S	N/S
Palmer	556	712	704	27%	-1%
Petersburg	11	9	9	N/S	N/S
Prince of Wales	12	9	10	N/S	N/S
Sand Point	2	1	1	N/S	N/S
Seward	16	24	13	-19%	-46%
Sitka	33	29	47	42%	62%
Skagway	0	2	0	N/S	N/S
St. Mary's ²	1	1	2	N/S	N/S
St. Paul	0	0	0	N/S	N/S
Tok	11	15	11	0%	-27%
Unalakleet	5	3	16	N/S	N/S
Unalaska	4	2	4	N/S	N/S
Utqiagvik	28	44	12	-57%	-73%
Valdez	10	6	11	N/S	N/S
Wrangell	11	7	6	N/S	N/S
Yakutat	2	6	3	N/S	N/S
Total	6,317	5,625	5,185	-18%	-8%
1st District	473	471	419	-11%	-11%
2nd District	136	99	54	-60%	-45%
3rd District	4,897	4,398	4,140	-15%	-6%
4th District	811	657	572	-29%	-13%

N/S: Numbers 10 or less are not compared statistically.

1. Kake court closed in October 2018.

2. St. Mary's court closed in 2016. Records for filings from the venue are still maintained separately.

**Table 5.17. Small Claims Case Dispositions by Manner of Disposition
FY 20**

Court	Stage of disposition					Total
	Dismiss	Default judgment	Judgment on the pleadings	Trial	Other	
Anchorage	1,174	1,457	158	44	273	3,106
Angoon	0	0	0	0	0	0
Aniak	1	18	7	2	0	28
Bethel	5	5	1	1	0	12
Cordova	2	0	0	0	0	2
Delta Junction	3	5	0	2	2	12
Dillingham	3	4	1	0	1	9
Emmonak	0	1	0	0	0	1
Fairbanks	207	213	44	14	11	489
Fort Yukon	0	0	0	0	0	0
Galena	2	1	0	0	0	3
Glennallen	4	4	1	1	0	10
Haines	4	1	1	2	0	8
Homer	15	13	7	8	1	44
Hoonah	1	2	0	0	0	3
Hooper Bay	1	1	0	0	0	2
Juneau	70	137	19	9	6	241
Kake ¹	Served by Petersburg					
Kenai	86	74	22	7	6	195
Ketchikan	39	40	6	6	1	92
Kodiak	15	15	4	3	2	39
Kotzebue	10	8	0	0	1	19
Naknek	1	0	1	0	0	2
Nenana	3	7	2	0	0	12
Nome	4	2	0	0	1	7
Palmer	272	272	90	40	30	704
Petersburg	3	4	1	0	1	9
Prince of Wales	1	9	0	0	0	10
Sand Point	0	1	0	0	0	1
Seward	4	5	2	1	1	13
Sitka	10	25	10	2	0	47
Skagway	0	0	0	0	0	0
St. Mary's ²	2	0	0	0	0	2
St. Paul	0	0	0	0	0	0
Tok	4	6	0	0	1	11
Unalakleet	15	1	0	0	0	16
Unalaska	3	0	0	0	1	4
Utqiagvik	3	9	0	0	0	12
Valdez	2	5	2	1	1	11
Wrangell	2	2	0	1	1	6
Yakutat	0	2	0	0	1	3
Total	1,971	2,349	379	144	342	5,185
% of total	38.0	45.3	7.3	2.8	6.6	100.0
1st District	130	222	37	20	10	419
2nd District	32	20	0	0	2	54
3rd District	1,581	1,850	288	105	316	4,140
4th District	228	257	54	19	14	572

Note: Due to the covid pandemic, jury trials in criminal and civil cases were suspended by order of the Supreme Court, March 16 – June 30, 2020.

1. Kake court closed in October 2018.

2. St. Mary's court closed in 2016. Records for filings from the venue are still maintained separately.

**Table 5.18. Civil Protective Order¹ Case Filings
FY 18 – FY 20**

Court	FY 18	FY 19	FY 20	Change	
				FY 18 to FY 20	FY 19 to FY 20
Anchorage	3,446	3,201	3,239	-6%	1%
Angoon	2	3	1	N/S	N/S
Aniak	47	31	36	-23%	16%
Bethel	277	302	224	-19%	-26%
Cordova	11	9	5	N/S	N/S
Delta Junction	41	42	50	22%	19%
Dillingham	89	104	98	10%	-6%
Emmonak	64	41	40	-37%	-2%
Fairbanks	875	786	760	-13%	-3%
Fort Yukon	6	18	16	N/S	-11%
Galena	7	17	17	N/S	0%
Glennallen	32	24	24	-25%	0%
Haines	20	18	23	15%	28%
Homer	167	126	136	-19%	8%
Hoonah	7	7	12	N/S	N/S
Hooper Bay	63	52	41	-35%	-21%
Juneau	421	415	437	4%	5%
Kake ²	1	1	Served by Petersburg	N/S	N/S
Kenai	438	426	378	-14%	-11%
Ketchikan	219	229	240	10%	5%
Kodiak	112	143	95	-15%	-34%
Kotzebue	131	149	145	11%	-3%
Naknek	28	17	25	-11%	47%
Nenana	12	17	15	25%	-12%
Nome	144	196	193	34%	-2%
Palmer	858	843	911	6%	8%
Petersburg	22	28	44	100%	57%
Prince of Wales	61	45	77	26%	71%
Sand Point	9	4	2	N/S	N/S
Seward	35	44	39	11%	-11%
Sitka	76	94	80	5%	-15%
Skagway	5	4	4	N/S	N/S
St. Mary's ³	30	32	36	20%	13%
St. Paul	16	11	2	N/S	N/S
Tok	42	29	22	-48%	-24%
Unalakleet	23	11	9	N/S	N/S
Unalaska	10	18	12	N/S	-33%
Utgavik	178	186	209	17%	12%
Valdez	28	21	44	57%	110%
Wrangell	25	16	19	-24%	19%
Yakutat	6	3	8	N/S	N/S
Total	8,084	7,763	7,768	-4%	0%
1st District	865	863	945	9%	10%
2nd District	476	542	556	17%	3%
3rd District	5,279	4,991	5,010	-5%	0%
4th District	1,464	1,367	1,257	-14%	-8%

N/S: Numbers 10 or less are not compared statistically.

1. The Civil Protective Order case group includes petitions for domestic violence, stalking, and sexual assault protective orders.

2. Kake court closed in October 2018.

3. St. Mary's court closed in 2016. Records for filings from the venue are still maintained separately.

**Table 5.19. Civil Protective Order¹ Case Dispositions
FY 18 – FY 20**

Court	FY 18	FY 19	FY 20	Change	
				FY 18 to FY 20	FY 19 to FY 20
Anchorage	3,334	3,077	3,178	-5%	3%
Angoon	3	3	1	N/S	N/S
Aniak	40	32	35	-12%	9%
Bethel	277	297	216	-22%	-27%
Cordova	9	10	6	N/S	N/S
Delta Junction	37	43	51	38%	19%
Dillingham	86	98	97	13%	-1%
Emmonak	63	37	32	-49%	-14%
Fairbanks	913	761	750	-18%	-1%
Fort Yukon	6	15	17	N/S	13%
Galena	6	16	16	N/S	0%
Glennallen	30	25	25	-17%	0%
Haines	20	18	22	10%	22%
Homer	161	131	130	-19%	-1%
Hoonah	7	7	10	N/S	N/S
Hooper Bay	61	48	45	-26%	-6%
Juneau	408	383	440	8%	15%
Kake ²	1	1	Served by Petersburg	N/S	N/S
Kenai	446	395	378	-15%	-4%
Ketchikan	214	228	242	13%	6%
Kodiak	112	134	95	-15%	-29%
Kotzebue	138	143	146	6%	2%
Naknek	26	20	22	-15%	10%
Nenana	11	17	15	36%	-12%
Nome	136	195	187	38%	-4%
Palmer	839	843	901	7%	7%
Petersburg	23	28	43	87%	54%
Prince of Wales	63	42	78	24%	86%
Sand Point	9	4	1	N/S	N/S
Seward	40	39	40	0%	3%
Sitka	80	91	81	1%	-11%
Skagway	4	5	4	N/S	N/S
St. Mary's ³	29	33	32	10%	-3%
St. Paul	16	10	1	N/S	N/S
Tok	43	29	21	-51%	-28%
Unalakleet	21	11	7	N/S	N/S
Unalaska	11	18	12	9%	-33%
Utgavik	178	177	185	4%	5%
Valdez	21	23	44	110%	91%
Wrangell	26	14	19	-27%	36%
Yakutat	5	4	8	N/S	N/S
Total	7,953	7,505	7,633	-4%	2%
1st District	854	824	948	11%	15%
2nd District	473	526	525	11%	0%
3rd District	5,140	4,827	4,930	-4%	2%
4th District	1,486	1,328	1,230	-17%	-7%

N/S: Numbers 10 or less are not compared statistically.

1. The Civil Protective Order case group includes petitions for domestic violence, stalking, and sexual assault protective orders.

2. Kake court closed in October 2018.

3. St. Mary's court closed in 2016. Records for filings from the venue are still maintained separately.

**Table 5.20. District Court General Civil Case Filings
FY 18 – FY 20**

Court	FY 18	FY 19	FY 20	Change	
				FY 18 to FY 20	FY 19 to FY 20
Anchorage	4,346	4,516	3,734	-14%	-17%
Angoon	6	3	0	N/S	N/S
Aniak	4	3	3	N/S	N/S
Bethel	88	61	40	-55%	-34%
Cordova	8	11	7	N/S	N/S
Delta Junction	20	18	9	N/S	N/S
Dillingham	33	22	11	-67%	-50%
Emmonak	5	3	2	N/S	N/S
Fairbanks	980	1,079	714	-27%	-34%
Fort Yukon	8	3	1	N/S	N/S
Galena	0	3	1	N/S	N/S
Glennallen	11	8	8	N/S	N/S
Haines	7	7	6	N/S	N/S
Homer	90	96	67	-26%	-30%
Hoonah	1	4	1	N/S	N/S
Hooper Bay	1	1	0	N/S	N/S
Juneau	291	284	242	-17%	-15%
Kake ¹	5	1	Served by Petersburg	N/S	N/S
Kenai	299	328	241	-19%	-27%
Ketchikan	157	174	131	-17%	-25%
Kodiak	76	87	61	-20%	-30%
Kotzebue	29	28	25	-14%	-11%
Naknek	12	6	11	-8%	N/S
Nenana	6	16	14	N/S	-12%
Nome	43	40	25	-42%	-37%
Palmer	938	945	712	-24%	-25%
Petersburg	13	12	18	38%	50%
Prince of Wales	22	12	14	-36%	17%
Sand Point	6	2	4	N/S	N/S
Seward	45	33	26	-42%	-21%
Sitka	58	73	52	-10%	-29%
Skagway	7	4	2	N/S	N/S
St. Mary's ²	0	0	0	N/S	N/S
St. Paul	1	2	0	N/S	N/S
Tok	13	6	9	N/S	N/S
Unalakleet	4	1	1	N/S	N/S
Unalaska	19	22	12	-37%	-45%
Utgavik	36	38	30	-17%	-21%
Valdez	15	20	6	N/S	N/S
Wrangell	30	12	13	-57%	8%
Yakutat	3	1	1	N/S	N/S
Total	7,736	7,985	6,254	-19%	-22%
1st District	600	587	480	-20%	-18%
2nd District	112	107	81	-28%	-24%
3rd District	5,899	6,098	4,900	-17%	-20%
4th District	1,125	1,193	793	-30%	-34%

N/S: Numbers 10 or less are not compared statistically.

1. Kake court closed in October 2018.

2. St. Mary's court closed in 2016. Records for filings from the venue are still maintained separately.

**Table 5.21. District Court General Civil Filings by Case Type
FY 20**

Court	Eviction/ real property	Debt/ contract	Post- conviction relief	Other	Total
Anchorage	1,537	1,828	2	367	3,734
Angoon	0	0	0	0	0
Aniak	0	3	0	0	3
Bethel	11	27	1	1	40
Cordova	0	7	0	0	7
Delta Junction	2	7	0	0	9
Dillingham	6	5	0	0	11
Emmonak	0	2	0	0	2
Fairbanks	185	353	1	175	714
Fort Yukon	0	0	0	1	1
Galena	0	1	0	0	1
Glennallen	0	6	0	2	8
Haines	1	4	0	1	6
Homer	23	36	0	8	67
Hoonah	0	1	0	0	1
Hooper Bay	0	0	0	0	0
Juneau	61	158	1	22	242
Kake ¹	Served by Petersburg				
Kenai	59	160	0	22	241
Ketchikan	43	72	0	16	131
Kodiak	4	51	0	6	61
Kotzebue	6	18	0	1	25
Naknek	2	9	0	0	11
Nenana	1	11	0	2	14
Nome	13	10	0	2	25
Palmer	133	509	0	70	712
Petersburg	10	8	0	0	18
Prince of Wales	4	10	0	0	14
Sand Point	1	3	0	0	4
Seward	11	14	0	1	26
Sitka	8	40	1	3	52
Skagway	0	2	0	0	2
St. Mary's ²	0	0	0	0	0
St. Paul	0	0	0	0	0
Tok	0	7	1	1	9
Unalakleet	1	0	0	0	1
Unalaska	2	8	0	2	12
Utqiagvik	7	18	0	5	30
Valdez	1	5	0	0	6
Wrangell	5	8	0	0	13
Yakutat	0	1	0	0	1
Total	2,137	3,402	7	708	6,254
% of total	34.2	54.4	0.1	11.3	100.0
1st District	132	304	2	42	480
2nd District	27	46	0	8	81
3rd District	1,779	2,641	2	478	4,900
4th District	199	411	3	180	793

1. Kake court closed in October 2018.

2. St. Mary's court closed in 2016. Records for filings from the venue are still maintained separately.

**Table 5.22. District Court General Civil Case Dispositions
FY 18 – FY 20**

Court	FY 18	FY 19	FY 20	Change	
				FY 18 to FY 20	FY 19 to FY 20
Anchorage	3,962	4,423	4,084	3%	-8%
Angoon	4	2	1	N/S	N/S
Aniak	0	5	2	N/S	N/S
Bethel	77	54	53	-31%	-2%
Cordova	11	10	7	N/S	N/S
Delta Junction	15	19	11	-27%	-42%
Dillingham	32	23	13	-59%	-43%
Emmonak	5	2	3	N/S	N/S
Fairbanks	947	912	842	-11%	-8%
Fort Yukon	2	5	2	N/S	N/S
Galena	1	0	3	N/S	N/S
Glennallen	5	6	10	N/S	N/S
Haines	2	11	5	N/S	N/S
Homer	91	68	84	-8%	24%
Hoonah	4	1	4	N/S	N/S
Hooper Bay	1	1	0	N/S	N/S
Juneau	260	253	216	-17%	-15%
Kake ¹	5	2	Served by Petersburg	N/S	N/S
Kenai	311	261	219	-30%	-16%
Ketchikan	151	159	139	-8%	-13%
Kodiak	92	75	60	-35%	-20%
Kotzebue	23	32	22	-4%	-31%
Naknek	8	8	12	N/S	N/S
Nenana	6	7	20	N/S	N/S
Nome	51	33	25	-51%	-24%
Palmer	913	842	774	-15%	-8%
Petersburg	18	8	19	6%	N/S
Prince of Wales	20	18	12	-40%	-33%
Sand Point	12	2	3	N/S	N/S
Seward	36	36	32	-11%	-11%
Sitka	53	71	61	15%	-14%
Skagway	6	5	5	N/S	N/S
St. Mary's ²	0	0	0	N/S	N/S
St. Paul	1	0	2	N/S	N/S
Tok	12	6	13	8%	N/S
Unalakleet	2	3	0	N/S	N/S
Unalaska	14	12	17	21%	42%
Utqiagvik	40	26	29	-27%	12%
Valdez	21	7	11	-48%	N/S
Wrangell	17	22	8	N/S	N/S
Yakutat	4	2	1	N/S	N/S
Total	7,235	7,432	6,824	-6%	-8%
1st District	544	554	471	-13%	-15%
2nd District	116	94	76	-34%	-19%
3rd District	5,509	5,773	5,328	-3%	-8%
4th District	1,066	1,011	949	-11%	-6%

N/S: Numbers 10 or less are not compared statistically.

1. Kake court closed in October 2018.

2. St. Mary's court closed in 2016. Records for filings from the venue are still maintained separately.

**Table 5.23. District Court General Civil Case Dispositions
by Manner of Disposition
FY 20**

Court	Stage of disposition						Total
	Dismiss/ settle	Default judgment	Summary judgment	Court trial	Jury trial	Other	
Anchorage	2,808	976	216	8	0	76	4,084
Angoon	1	0	0	0	0	0	1
Aniak	1	0	1	0	0	0	2
Bethel	34	9	8	0	0	2	53
Cordova	4	3	0	0	0	0	7
Delta Junction	9	0	2	0	0	0	11
Dillingham	8	1	3	0	0	1	13
Emmonak	1	2	0	0	0	0	3
Fairbanks	563	189	59	7	0	24	842
Fort Yukon	0	1	1	0	0	0	2
Galena	1	1	1	0	0	0	3
Glennallen	4	4	2	0	0	0	10
Haines	3	1	1	0	0	0	5
Homer	50	14	15	1	0	4	84
Hoonah	3	1	0	0	0	0	4
Hooper Bay	0	0	0	0	0	0	0
Juneau	93	70	43	0	0	10	216
Kake ¹	Served by Petersburg						
Kenai	114	71	24	3	0	7	219
Ketchikan	102	17	11	4	0	5	139
Kodiak	36	18	5	0	1	0	60
Kotzebue	13	6	2	1	0	0	22
Naknek	9	1	1	0	0	1	12
Nenana	9	8	1	0	0	2	20
Nome	13	7	5	0	0	0	25
Palmer	404	241	94	5	1	29	774
Petersburg	10	5	4	0	0	0	19
Prince of Wales	6	3	2	1	0	0	12
Sand Point	2	0	1	0	0	0	3
Seward	15	9	8	0	0	0	32
Sitka	43	9	8	0	0	1	61
Skagway	3	1	1	0	0	0	5
St. Mary's ²	0	0	0	0	0	0	0
St. Paul	0	2	0	0	0	0	2
Tok	10	1	0	0	0	2	13
Unalakleet	0	0	0	0	0	0	0
Unalaska	9	4	4	0	0	0	17
Utqiagvik	13	9	4	0	0	3	29
Valdez	3	8	0	0	0	0	11
Wrangell	6	1	0	1	0	0	8
Yakutat	0	0	1	0	0	0	1
Total	4,403	1,693	528	31	2	167	6,824
% of total	64.5	24.8	7.7	0.5	0.1	2.4	100.0
1st District	270	108	71	6	0	16	471
2nd District	39	22	11	1	0	3	76
3rd District	3,466	1,352	373	17	2	118	5,328
4th District	628	211	73	7	0	30	949

Note: Due to the covid pandemic, jury trials in criminal and civil cases were suspended by order of the Supreme Court, March 16 – June 30, 2020.

1. Kake court closed in October 2018.

2. St. Mary's court closed in 2016. Records for filings from the venue are still maintained separately.

**Table 5.24. Minor Offense Case Dispositions
FY 18 – FY 20**

Court	FY 18	FY 19	FY 20	Change	
				FY 18 to FY 20	FY 19 to FY 20
Anchorage¹	19,062	13,070	26,319	38%	101%
Angoon	5	6	5	N/S	N/S
Aniak	12	24	25	108%	4%
Bethel	193	247	194	1%	-21%
Cordova	111	103	74	-33%	-28%
Delta Junction	437	531	254	-42%	-52%
Dillingham	346	385	236	-32%	-39%
Emmonak	17	15	17	0%	13%
Fairbanks	6,142	6,324	5,637	-8%	-11%
Fort Yukon	9	4	3	N/S	N/S
Galena	12	17	9	N/S	N/S
Glennallen	875	364	319	-64%	-12%
Haines	98	126	138	41%	10%
Homer	1,711	1,301	1,015	-41%	-22%
Hoonah	45	38	22	-51%	-42%
Hooper Bay	8	14	12	N/S	-14%
Juneau	1,891	3,164	1,939	3%	-39%
Kake ²	24	4	Served by Petersburg	N/S	N/S
Kenai	6,058	4,610	5,326	-12%	16%
Ketchikan	731	641	574	-21%	-10%
Kodiak	637	634	791	24%	25%
Kotzebue	83	35	76	-8%	117%
Naknek	168	153	83	-51%	-46%
Nenana	1,362	2,650	2,828	108%	7%
Nome	720	388	265	-63%	-32%
Palmer	9,724	8,980	7,965	-18%	-11%
Petersburg	75	80	111	48%	39%
Prince of Wales	456	428	270	-41%	-37%
Sand Point	42	16	29	-31%	81%
Seward	2,060	1,635	1,511	-27%	-8%
Sitka	379	372	365	-4%	-2%
Skagway	13	9	3	N/S	N/S
St. Mary's ³	9	6	6	N/S	N/S
St. Paul	16	5	0	N/S	N/S
Tok	833	526	214	-74%	-59%
Unalakleet	33	41	18	-45%	-56%
Unalaska	638	402	214	-66%	-47%
Utqiagvik	142	143	71	-50%	-50%
Valdez	260	177	200	-23%	13%
Wrangell	98	86	35	-64%	-59%
Yakutat	53	32	50	-6%	56%
Total	55,588	47,786	57,223	3%	20%
1st District	3,868	4,986	3,512	-9%	-30%
2nd District	978	607	430	-56%	-29%
3rd District	41,708	31,835	44,082	6%	38%
4th District	9,034	10,358	9,199	2%	-11%

N/S: Numbers 10 or less are not compared statistically.

1. From January 1, 2019 – June 30, 2019 (FY19), the Anchorage Police Department did not file unpaid citations with the court system for entry of default judgment. The FY20 figures include filings for the eighteen-month period from January 1, 2019 – June 30, 2020.

2. Kake court closed in October 2018.

3. St. Mary's court closed in 2016. Records for filings from the venue are still maintained separately.

**Table 5.25. Minor Offense Case Dispositions by Case Type
FY 20**

Court	Equipment	Speeding	Improper driver behavior	Maneuvers	Alcohol/ drugs	Fish & Game	Other	Total
Anchorage¹	2,429	4,362	13,304	3,683	331	77	2,133	26,319
Angoon	1	0	2	0	0	2	0	5
Aniak	0	0	0	0	0	25	0	25
Bethel	9	0	43	13	0	48	81	194
Cordova	1	2	10	0	1	50	10	74
Delta Junction	42	132	45	12	0	19	4	254
Dillingham	39	2	94	8	1	17	75	236
Emmonak	0	2	1	0	0	8	6	17
Fairbanks	807	2,019	1,784	575	50	125	277	5,637
Fort Yukon	0	0	0	0	0	1	2	3
Galena	0	1	0	0	0	8	0	9
Glennallen	30	113	92	11	2	64	7	319
Haines	18	23	57	6	0	20	14	138
Homer	92	406	367	29	2	92	27	1,015
Hoonah	0	0	6	1	0	13	2	22
Hooper Bay	0	0	0	0	0	0	12	12
Juneau	54	234	813	205	0	175	458	1,939
Kake ²	Served by Petersburg							
Kenai	551	1,993	1,727	223	24	532	276	5,326
Ketchikan	14	24	295	28	2	69	142	574
Kodiak	70	27	429	57	8	129	71	791
Kotzebue	0	0	34	8	0	14	20	76
Naknek	4	7	25	4	1	34	8	83
Nenana	167	2,054	413	109	12	43	30	2,828
Nome	5	9	74	26	2	8	141	265
Palmer	1,303	2,381	2,856	656	22	174	573	7,965
Petersburg	3	2	22	3	0	75	6	111
Prince of Wales	5	78	86	4	3	70	24	270
Sand Point	0	0	13	0	1	13	2	29
Seward	125	740	409	35	3	98	101	1,511
Sitka	4	15	112	6	3	144	81	365
Skagway	0	1	0	0	0	1	1	3
St. Mary's ³	0	0	0	2	0	0	4	6
St. Paul	0	0	0	0	0	0	0	0
Tok	21	86	68	6	0	26	7	214
Unalakleet	1	0	0	0	0	2	15	18
Unalaska	108	11	68	10	1	5	11	214
Utqiagvik	6	14	4	0	0	7	40	71
Valdez	9	29	55	18	1	19	69	200
Wrangell	2	0	11	1	0	15	6	35
Yakutat	2	6	2	1	0	37	2	50
Total	5,922	14,773	23,321	5,740	470	2,259	4,738	57,223
% of total	10.4	25.8	40.8	10.0	0.8	3.9	8.3	100.0
1st District	103	383	1,406	255	8	621	736	3,512
2nd District	12	23	112	34	2	31	216	430
3rd District	4,761	10,073	19,449	4,734	398	1,304	3,363	44,082
4th District	1,046	4,294	2,354	717	62	303	423	9,199

1. From January 1, 2019 – June 30, 2019 (FY19), the Anchorage Police Department did not file unpaid citations with the court system for entry of default judgment. The FY20 figures include filings for the eighteen-month period from January 1, 2019 – June 30, 2020.

2. Kake court closed in October 2018.

3. St. Mary's court closed in 2016. Records for filings from the venue are still maintained separately.

**Table 5.26. Minor Offense Case Types
FY 20**

Equipment Equipment / Vehicles - Registrations, Defects and Misuse	Alcohol and Drug Controlled Substance Violations
Speeding	Fish and Game
Improper Driver Behavior Duties Failed — Requirements Not Met	Other Offenses Tickets with zero points added to record
Maneuvers — Illegal or Improper Failure to Obey Following Improperly Improper Lane or Location Passing Reckless, Careless or Negligent Driving Failure to Yield Failure to Signal Improper Turns Wrong Way or Side Miscellaneous Maneuvers	Littering Duty Failure Curfew Dog Tickets Tobacco Boat Safety

In FY07 the Alaska Court System changed the way it categorizes minor offenses for annual reporting. The traffic categories now conform to the American Association of Motor Vehicle Administrators (AAMVA) Code Dictionary. This change is intended to make Alaska statistics easier to compile, understand, and compare to those of other jurisdictions.



Devil Mountain, Bering Land Bridge National Preserve (Second Judicial District)

Cover photograph: Homer Spit, 30 Jun 2018. © 2018 Melissa S. Green.

Photos used with permission

The following photos are used without charge, including photos chosen from Creative Commons-licensed photos at Flickr (www.flickr.com). Creative Commons licensing information can be found at <http://creativecommons.org/licenses/>

Photo by Fred Broerman, U.S. Fish and Wildlife Service, Alaska Region (*usfws_alaska* on Flickr): page 21, Coastal sedge meadow, Yukon Delta National Wildlife Refuge, 25 Aug 2006. (Public domain.)

Photos by Melissa S. Green: page 15, Knik River ice, 30 Dec 2004; page 22, Valdez Small Boat Harbor, 15 Jun 2014; page 53, Pacific silverweed (*Argentina pacifica*), Anchorage, 19 Jul 2014. (Used by permission.)

Photo by Neal Herbert, National Park Service, Alaska (*alaskanps* on Flickr): page ii, Wetlands along the Kobuk River, 22 Jul 2012. (Public domain.)

Photo by Alison Inconstanti (*puck90* on Flickr): page 6, Juneau pier, 12 Dec 2014. (Used in accordance with Creative Commons Attribution-NonCommercial-ShareAlike 2.0 Generic (CC BY-NC-SA 2.0) license.)

Photos by Neil Nesheim: page 16, Kayaks and lodge, Icy Straight Point, Hoonah, 6 Aug 2016; page 54, Frozen seaweed (*fucus vesiculosus*), Wrangell, 15 Dec 2019; page 85 back, Porcupine, Douglas Island, 9 Nov 2019; page vi, Stellar sea lion on channel marker off Admiralty Island, 18 Apr 2020. (Used by permission.)

Photo by National Park Service, Alaska (*alaskanps* on Flickr): page 84, Devil Mountain, Bering Land Bridge National Preserve, 23 Aug 2012. (Public domain.)

Photos by Kristine Sowl, U.S. Fish and Wildlife Service, Alaska Region (*usfws_alaska* on Flickr): page 1, Red pixie cup lichen, Yukon Delta National Wildlife Refuge, 7 Jul 2012; page 4, River oxbows, Yukon Delta National Wildlife Refuge, 13 May 2013; page 5, Bar-tailed godwit, Yukon Delta National Wildlife Refuge, 13 May 2013. (Public domain.)

Photo by Thomas W. Wilberding (*twilberding* on Flickr): page v, Snow bunting, Utqiagvik, 17 Jun 2018. (Used in accordance with Creative Commons Attribution-NonCommercial-NoDerivs 2.0 Generic (CC BY-NC-ND 2.0) license.)



Porcupine, Douglas Island (First Judicial District)



Office of the Administrative Director
Alaska Court System
303 K Street
Anchorage, Alaska 99501
(907) 264-0548